



CUPRA FORMENTOR

Formentor 1.5 TSI 150 ch DSG7 V

VIN NO VSSZZZKMZNR065069
Registration Number GG845KB



MOT Date



Last Service



Number of Owners



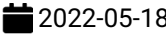
Last Service Mileage



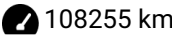
Number of Keys



First Registration Date



Odometer Reading



Country First Registered



Inspection Report Summary

Customer	BCAuto Encheres	Report Number	P20250911100542
Inspection Date / Place	2025-09-11 / BCA AUNAY	Cosmetic Grade	3

Vehicle Summary

Vehicle Condition	Not Movable	VAT Type	Qualified - Normal Rate
Fuel Type	Petrol	Gearbox Type	Auto clutch
Colour	Blue	Engine Size (cc)	1498
Engine Size	1.5	No of Doors	5
Body Type	Stationwagon / Estate	Drive Train	Front
Seat Colour		No of Seats	5
Charging Cables		WLTP CO2 Emissions	

Vehicle History & Documents

Service Book Available	-	Next Service Mileage	km
Previous Usage	Normal Use	Imported	
Manufacturer Warrenty			





Equipment

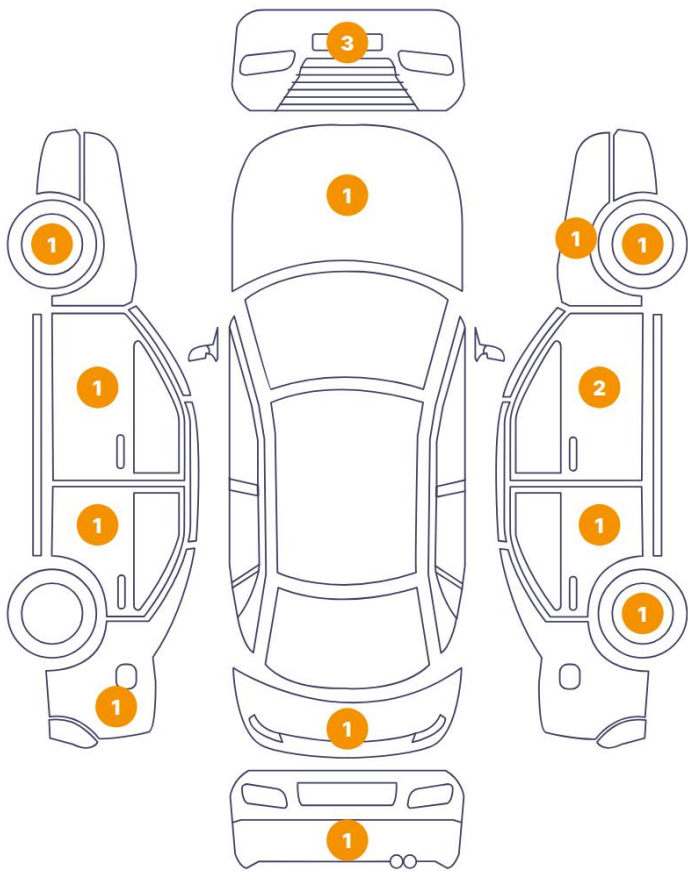
Central locking	Rear parking sensors	Cruise control	Power assisted steering
Electrically folding wing mirrors	Alloys wheels	Front fog lamps	Roof rails

Equipment Details

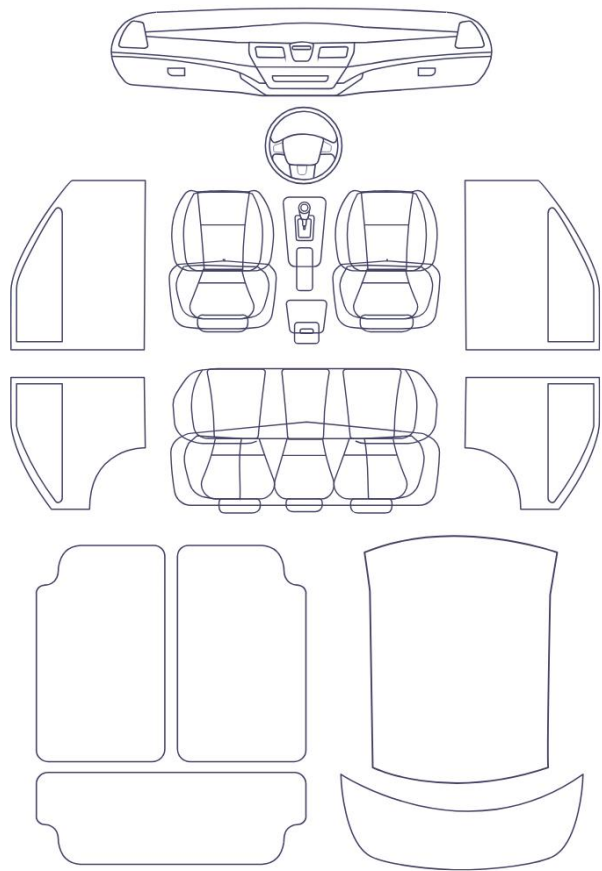
Seat Heating	No	Air Conditioning	Yes
--------------	----	------------------	-----

Cosmetic Damage

16 Dommages



0 Dommages

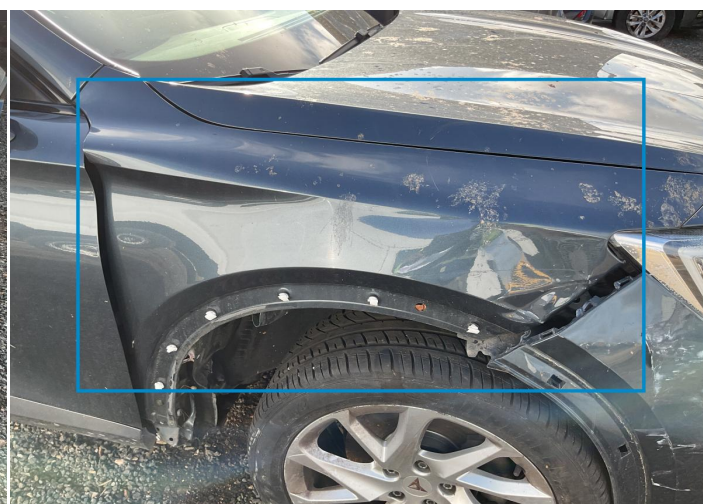


Component		Damage	Comments
1	Bumper / Front	Paint / Burn	
2	Fender / Front Right	Bodywork / Dent / Dent	
3	Hood	Paint / Scratch / Line	
4	Door / Front Right	Paint / Scratch / Line	
5	Rim / Back Right	Out of Bodywork / Scratch	
6	Rim / Front Right	Out of Bodywork / Scratch	
7	Mirror Repeater / Right	Paint / Scratch / Line	
8	Door / Back Right	Paint / Scratch / Line	
9	Bumper / Back	Paint / Scratch / Line	
10	Tailgate	Paint / Scratch / Line	
11	Side Panel / Back Left	Paint / Scratch / Line	
12	Door / Back Left	Paint / Scratch / Line	

13	Door / Front Left	Paint / Scratch / Line
14	Rim / Front Left	Out of Bodywork / Scratch
15	Bumper / Front	Paint / Scratch / Line
16	Bumper / Front	Paint / Scratch / Line



1. Bumper / Front
Paint / Burn -



2. Fender / Front Right
Bodywork / Dent / Dent -



3. Hood
Paint / Scratch / Line -



4. Door / Front Right
Paint / Scratch / Line -



5. Rim / Back Right
Out of Bodywork / Scratch -



6. Rim / Front Right
Out of Bodywork / Scratch -



7. Mirror Repeater / Right
Paint / Scratch / Line -



8. Door / Back Right
Paint / Scratch / Line -



9. Bumper / Back
Paint / Scratch / Line -



10. Tailgate
Paint / Scratch / Line -



11. Side Panel / Back Left
Paint / Scratch / Line -



12. Door / Back Left
Paint / Scratch / Line -



13. Door / Front Left
Paint / Scratch / Line -



14. Rim / Front Left
Out of Bodywork / Scratch -



15. Bumper / Front
Paint / Scratch / Line -



16. Bumper / Front
Paint / Scratch / Line -

Mechanical Condition


Tyres

Presence Anti-Theft Lock Nut 

 *No troubles detected, good condition or correct tests, according to vehicle age and mileage*

 *Damages or malfunction detected that requires repairs by the buyer*

 *Not applicable*

 *Not tested*

Disclaimer Section

The test drive is done on a flat surface and lasts about 2 minutes. The driven distance is a minimum of 300 meters, including a u-turn, an acceleration and a braking phase. The highest speed achieved during this test is 50km/h. The mechanical check is a visual and dynamic diagnosis without any disassembly. We cannot guarantee any mechanical wear part.