



CUPRA Leon

Leon 2.0 TSI DSG

VIN NO VSSZZZKLZNR062543
Registration Number LZNR062543



MOT Date	Number of Owners	Number of Keys	Odometer Reading
2025-06-01	1	2	42980 km
Last Service	Last Service Mileage	First Registration Date	Country First Registered
-	-	2022-06-23	Germany

Inspection Report Summary

Customer	BCA Online	Report Number	P20250909130343
Inspection Date / Place	2025-09-09 / BCA Heidenheim	Cosmetic Grade	2

Vehicle Summary

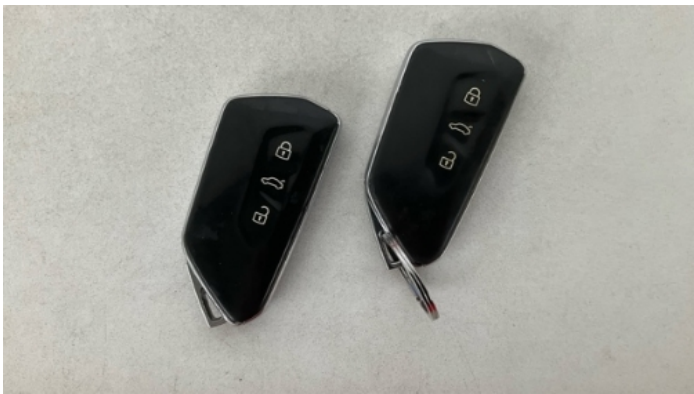
Vehicle Condition	Runner	VAT Type	Qualifying
Fuel Type	Petrol	Road Worthy	Yes
Colour	Blue	Engine Size (cc)	1984
Engine Size	2.0	No of Doors	5
Body Type	Sedan	Drive Train	Front
Seat Colour		No of Seats	5
Seat Covering Name	Schwarz	Seat Covering	Synthetic Leather
Charging Cables		WLTP CO2 Emissions	
Gearbox Type	Automatic		

Vehicle History & Documents

Service Book Available	Missing	Next Service Mileage	km
Previous Usage	Mobility	Imported	No
Manufacturer Warrenty			







Equipment

Tinted Glass	USB Socket	Alloys wheels	AndroidAuto
Bluetooth telephone interface	Digital Radio	Front fog lamps	Heated wing mirrors
Remote adjusting wing mirrors	Reversing Camera	Split folding rear seats	Sunroof
Leather steering wheel	Radio	Trip Computer	Airbag Status
Ambientlighting	Anti-lock braking	Cruise control	Digitaldashboard
Front parking sensors	Parking Assistance	Remote central locking	Satellite navigation
Stability control	Electrically folding wing mirrors	LED Headlamps	Rear parking sensors

Equipment Details

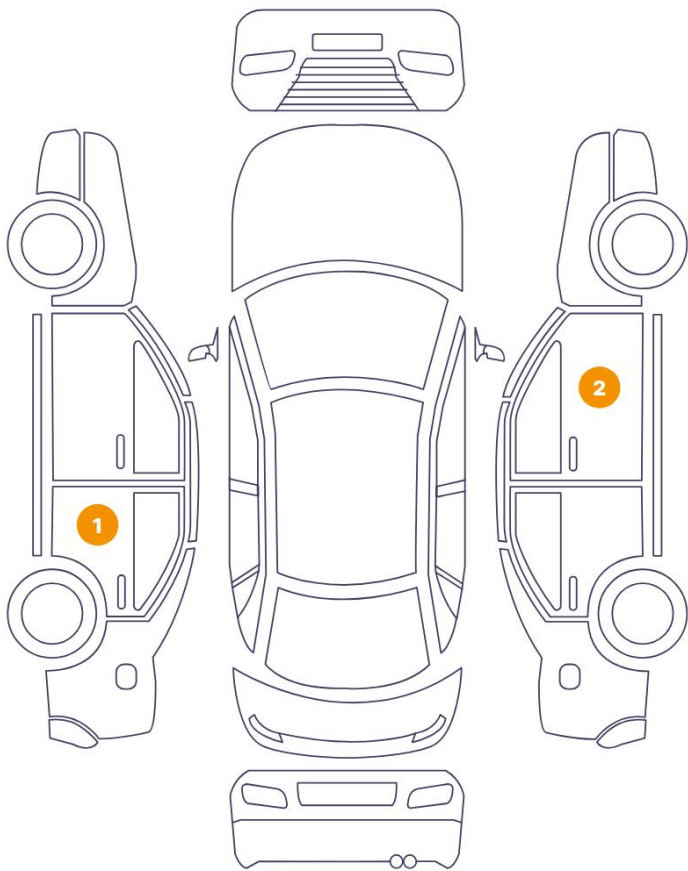
Air Conditioning	Three Zone Climate Control	Alloy Wheel Size	19
Seat Heating	Front	Sunroof Type	Opening Panoramic

Wheels & Tyres

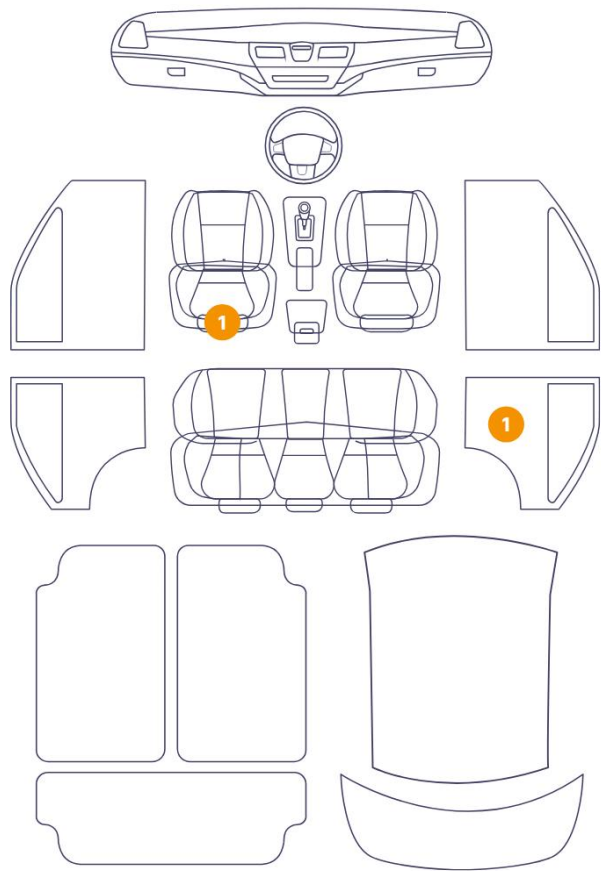
Left Front Tyre Depth	6	Right Front Tyre Depth	6
Right Rear Tyre Depth	7	Left Rear Tyre Depth	7

Cosmetic Damage

3 Schäden



2 Schäden



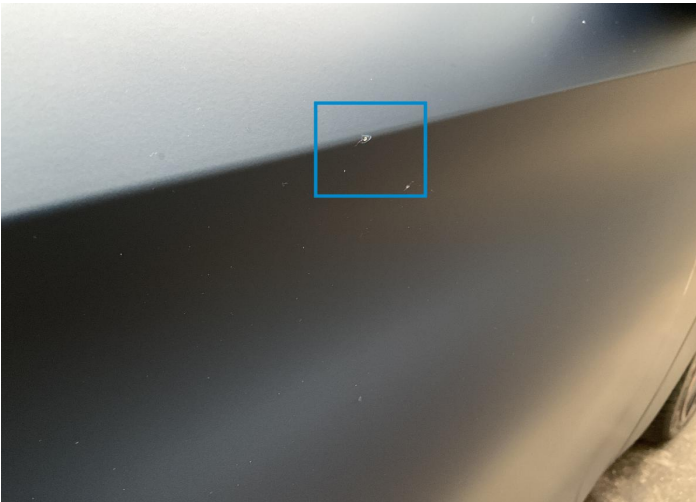
Component	Damage	Comments
1 Seat / Front Left	Interior / Scratched	
2 Panel Filling / Back Right	Interior / Scratched	
3 Door / Front Right	Paint / Scratch / Scuff	
4 Door Handle / Front Right	Paint / Scratch / Scuff	
5 Door / Back Left	Paint / Scratch / Scuff	



1. Seat / Front Left
Interior / Scratched -



2. Panel Filling / Back Right
Interior / Scratched -



3. Door / Front Right
Paint / Scratch / Scuff -



4. Door Handle / Front Right
Paint / Scratch / Scuff -



5. Door / Back Left
Paint / Scratch / Scuff -

Mechanical Condition

Control Lights

ABS Warning Light	✓	ESP Fault/Traction Control Malfunction Light	✓
Airbag Warning Light	✓	Oil Pressure Warning Light	✓
Brake Warning Light	✓	Power Steering Warning Light	✓
Alternator / Battery	✓	No Dashboard Lights	✓
Display Defect	✓	Tire Pressure Monitoring System	✓

Engine

Engine Status / EML	✓	Engine Leak Visible	✓
Engine Starts	✓		

Gearbox

Gear Box	✓
----------	---

Equipments Test

AC / Heating System	✓	Main & Spare Keys Functioning	✓
Electric Windows	✓	Navigation System	✓
Parking Sensors / Cameras Functioning	✓	Central Locking	✓
Audio Equipment	✓		

Levels

Brakes Fluid	✓	Coolant Fluid	✓
--------------	---	---------------	---

Test Drive Inspection

Steering Wheel			
Steering Noise / Anomaly		✓	
Engine			
Engine Noise	✓	The Gears Scratch / Skip / Abnormal Operation	✓
Fume Quantity	✓	Power Loss	✓
Brake			
Brake System Anomaly		✓	
Gearbox			
Automatic Shift		✓	
General			
Test Driven Status		✓	
✓ <i>No troubles detected, good condition or correct tests, according to vehicle age and mileage</i>			
! <i>Damages or malfunction detected that requires repairs by the buyer</i>			
NA <i>Not applicable</i>			
= <i>Not tested</i>			

Disclaimer

Please also note the "UserGuide condition report", which shows the scope of the vehicle description.

[User Guide](#)