



Expertise

Protocol number: 40670213
Order No. / Reference: 24930242
Inspection date: 21 Jul 2025

Manufacturer: Seat

Model: Leon Sportstourer 2.0 TDI DSG FR

VIN: VSSZZZKLZMR089570



Vehicle details	
Manufacturer / Type / Model / Equipment	
Seat Leon Sportstourer 2.0 TDI DSG FR	
Vehicle Identification number	VSSZZZKLZMR089570
Mileage (Read)	38,189 km
First registration	9 Jul 2021
Number of holders	1
Next periodical technical inspection	07/2026
(Report not on hand)	
Power / Engine displacement	110 kw / 1,968 ccm
Fuel type / Cylinder	Diesel / 4
Gearbox / Number of gears	Automatic / 7
Type of drive	Front drive
Type of vehicle	Station wagon
Colour / colour code	Rot-Metallic (0X1)
Doors / Seats	5 / 5
Upholstery type	Cloth
Colour of upholstery	Black
Re/Import	no
Driving readiness	Roadworthy



Vehicle details

Maintenance booklet / proof	digital proof / complete	Next maintenance in	
Last maintenance on / at	11/2023 at 22,791 km		
Key is / should be	2 / 2	FZG documents	ZB#2 (B) was available (copy), ZB#1 (S) was not available
		Letter No.	GD012048
Previous damage / Accident	Detectable	Repainting	Detectable
Inspection conditions	Sufficient	Lifting equipment / pit	yes
Test drive	Not performed	Engine function test	Performed
Driving readiness	Roadworthy		
Manufacturer key number/ type code number	7593 / ASL 00018		
Emission standard	EURO6;WLTP;AP;PI/CI; M, N1 I	Fine dust sticker	
Permitted total weight	2,070 kg	Empty weight	

Tyres

Mounted tyres

#	Tyre size	Type of tyre	Manufacturer	Tread depth
1)	225/40 R18 92Y	Summer tyres on Light alloy	Bridgestone	3mm / 5mm
2)	225/40 R18 92Y	Summer tyres on Light alloy	Bridgestone	5mm / 5mm

Additional tyres

#	Tyre size	Type of tyre	Manufacturer	Tread depth
1)	205/50 R17 93H	Winter tyres on Light alloy	Bridgestone	4mm / 4mm
2)	205/50 R17 93H	Winter tyres on Light alloy	Bridgestone	6mm / 6mm

Replacement

Typ	Tyre size	Type of tyre	Manufacturer	Tread depth
N	125/70 R18	Summer tyres on Steel		4 mm

Legend: Tread depth information for tires on the left is in the first place, for tires on the right is in the second place on the axle in the direction of travel

Equipment

Standard equipment

- | | |
|-------------------------------------------------------------------------------------------------------------------------------------------------------------------------------------------------------------------------------------------------------------------------------------------------------------------------------------------------------------------------------------------------------------------------------------------------------------------------------------------------------------------------------------------------------------------------------------------------------------------------------------------------------------------------------------------------------------------------------------------------------------------------------------------------------------------------------------------------------------------------------------------------------------------------------------------------------------------------------------------------------------------------------------------------------------------------------------------------------------------------------------------------------------------------------------------------------------------------------------------------------------------------------------------------------------------------------------------------------------------------------------------------------------------------------------------------------------------------------------------------------------------------------------------------------------------------------------------------------------------------------------------------------------------------------------------------------------------------------------------------------------------------------------------------------------------------------------------------------------------------------------------------------------------------------------------------------------------------------------------------|----------------------------------------------------------------------------------------------------------------------------------------------------------------------------------------------------------------------------------------------------------------------------------------------------------------------------------------------------------------------------------------------------------------------------------------------------------------------------------------------------------------------------------------------------------------------------------------------------------------------------------------------------------------------------------------------------------------------------------------------------------------------------------------------------------------------------------------------------------------------------------------------------------------------------------------------------------------------------------------------------------------------------------------------------------------------------------------------------------------------------------------------------------------------------------------------------------------------------------------------------------------------------------------------------------------------------------------------------------------------------------------------------------------------------------------------------------------------------------------------------------------------------------------------------------------------------------------------------------------------------------------------------------------------------------------------------------------------------------------------------------------------------------------------------------------------------------------------------------------------------------------------------------------------------------------------------------------------|
| <ul style="list-style-type: none"> • Storage compartment in the front doors • Airbag driver and passenger • Airbag: Head airbag system, front and rear • Electrically folding exterior mirrors including passenger mirror lowering • Indicators with LED technology integrated in exterior mirrors • Roof rails, black • Differential lock, electronic XDS • Electronic parking brake • Electric window lifter with anti-pinch protection and one-touch function • Luggage compartment blind • Cruise control system GRA • Illuminated glove compartment • Rear window wiper • Keyless Go (engine start/stop button) • Climatronic air conditioning system • Headrests (3) rear • Steering wheel: Three-spoke steering wheel in leather with multifunction and logo • Light: Full-LED taillights • Fatigue detection • Package: LED interior light package • Radio accessories: 6 speakers • Radio accessories: Digital radio reception DAB+ • Radio accessories: USB-C interface • Wheels: Tyre fit • SEAT CONNECT • Side windows from 2nd row and rear window dark tinted • Seat belts: three-point automatic front and rear • Seats: Driver's seat with height adjustment • Seats: Lumbar support for front passenger • Seats: Lumbar support for driver • Seats: Sport comfort seats in the front • Sports suspension "FR" • Lane departure warning system • Power socket: 12 V socket in the trunk • Bumpers in body color • Ultrasonic rear parking aid • Variable luggage compartment floor • Lashing eyes in the luggage compartment • Electronic immobilizer • Central locking with radio remote control | <ul style="list-style-type: none"> • storage pocket on the backs of the front seats • Airbag: Passenger airbag deactivation • Airbag: Side airbag for driver and front passenger • Exterior mirrors electrically adjustable and heated • Exterior mirror housing painted in Cosmo Grey • On-board computer • Brake light, third • diesel particulate filter • tachometer • Electronic Stability Control (ESC) including anti-lock braking system (ABS) • Luggage compartment lighting • Speed limiter • Transmission: 7-speed DSG • Heated rear window • ISOFIX child seat securing system in the 2nd row of seats left and right • Headrests (2) front • LED technology for headlights, daytime running lights and rear lights • Reading light front/rear • Rear center armrest with through-loading option • fog lights with cornering light function in LED technology • Radio: Media System Plus • Radio accessories: Bluetooth interface with integrated hands-free system and audio streaming • Tire pressure monitoring indicator • Shift paddles on the steering wheel • SEAT Drive Profile • Power steering • Seats, passenger seat height adjustable • Seats: Remote release for folding the rear seat backrest in the trunk • Seats: Rear seat backrest asymmetrically split folding • Sun visor on driver and passenger side with make-up mirror and lighting • Start-stop system and recuperation • Socket: 12 V socket at the front • Illuminated door sills at the front • "Front Assist" environment monitoring system with City Emergency Braking function • Virtual Cockpit • Thermal insulation glazing |
|-------------------------------------------------------------------------------------------------------------------------------------------------------------------------------------------------------------------------------------------------------------------------------------------------------------------------------------------------------------------------------------------------------------------------------------------------------------------------------------------------------------------------------------------------------------------------------------------------------------------------------------------------------------------------------------------------------------------------------------------------------------------------------------------------------------------------------------------------------------------------------------------------------------------------------------------------------------------------------------------------------------------------------------------------------------------------------------------------------------------------------------------------------------------------------------------------------------------------------------------------------------------------------------------------------------------------------------------------------------------------------------------------------------------------------------------------------------------------------------------------------------------------------------------------------------------------------------------------------------------------------------------------------------------------------------------------------------------------------------------------------------------------------------------------------------------------------------------------------------------------------------------------------------------------------------------------------------------------------------------------|----------------------------------------------------------------------------------------------------------------------------------------------------------------------------------------------------------------------------------------------------------------------------------------------------------------------------------------------------------------------------------------------------------------------------------------------------------------------------------------------------------------------------------------------------------------------------------------------------------------------------------------------------------------------------------------------------------------------------------------------------------------------------------------------------------------------------------------------------------------------------------------------------------------------------------------------------------------------------------------------------------------------------------------------------------------------------------------------------------------------------------------------------------------------------------------------------------------------------------------------------------------------------------------------------------------------------------------------------------------------------------------------------------------------------------------------------------------------------------------------------------------------------------------------------------------------------------------------------------------------------------------------------------------------------------------------------------------------------------------------------------------------------------------------------------------------------------------------------------------------------------------------------------------------------------------------------------------------|

Extra equipment

- | | |
|--------------------------------------------------------------------------------------------------------------------------------------------------------------------------|--------------------------------------------------------------------------------------------------------------------------------|
| <ul style="list-style-type: none"> • Airbag: Rear side airbags and front knee airbags • Roof: Panoramic glass sunroof, electric (with sun blind) | <ul style="list-style-type: none"> • Chrome strips on the side windows (outside) including roof rails in silver |
|--------------------------------------------------------------------------------------------------------------------------------------------------------------------------|--------------------------------------------------------------------------------------------------------------------------------|



- headliner in black
- Tailgate electrically operated (opening & closing) (incl. sensor-controlled opening & closing (Virtual Pedal))
- Package: Business package INFOTAIN (navigation system, prepared for activation of the SEAT CONNECT online infotainment anti-theft package, navigation system with 10" display, 3D navigation, voice control, MAPCARE with integrated map of Europe - Wireless Full Link Connectivity including Android Auto and Apple CarPlay - Connectivity box in the center console storage compartment including wireless charger - Anti-theft alarm system including interior monitoring, backup horn, and tow-away protection)
- Package: Dynamic Package (Adaptive Chassis Control DCC - Progressive Steering)
- Package: Light and Vision (Rain sensor - Automatic dimming interior mirror - Light sensor with automatic headlight switching - Automatic Coming Home and Leaving Home function)
- Package: Winter package (heated steering wheel - heated front seats)
- Wheels: Light alloy wheels (4) 7.5 J x 18" "Performance II" in Cosmo Grey, high-sheen (with tires 225/40 R 18)
- Wheels: Spare wheel as emergency wheel
- Keyless locking and opening system; Kessy Advanced
- auxiliary heater, with remote control
- Power socket: 230 V socket in the luggage compartment
- Luggage partition net
- Paintwork: Individual paintwork
- Lights: Full-LED headlights (Full-LED headlights - Full-LED taillights - Rear indicators with dynamic LED technology - Infinite Light; Dynamic LED light strip at the rear - "Hola!" light projection for greeting under the exterior mirrors - Dynamic headlight range control)
- Package: Dinamica - Package (Seat center panel in Dinamica microfiber, color black - Driver's seat electrically adjustable with memory function - Lumbar support on driver's side, electrically adjustable - Exterior mirrors with memory function - Rear center armrest with through-loading option)
- Package: Driver Assistance Package XL for navigation system (Automatic Distance Control ACC up to 210 km/h with Predictive Cruise Control PCC - High Beam Assist - Side Assist including Blind Spot Assist - Exit Assist Information and Exit Warning - Travel Assist - Emergency Assist - Lane Assist Plus - Traffic Sign Recognition)
- Parking assistant with front parking aid
- Radio accessories: BeatsAudio sound system (10 speakers (with subwoofer), 12-channel digital amplifier, subwoofer, 340 watts total power)
- Rear view camera
- Smart Ambient Light (surrounding ambient lighting in the interior - Welcome Ceremony - interaction with assistance systems and Drive Profile in FR)

Brief expert findings

Documents submitted	At the time of the inspection, the registration certificate Part 2 (letter) was available, but the registration certificate Part 1 (certificate) was not. (Copy)
VIN comparison	The vehicle identification number (VIN) was read and the undersigned verified that it matched the documents submitted during the inspection.
Inspection	The inspection conditions were sufficient for the assessment of the vehicle. Lifting equipment and a pit were available for examining the vehicle.
Test drive	No test drive/maneuvering was carried out during the inspection of the vehicle.
Engine function test	An engine test run was performed.
Driving readiness	The vehicle was drivable at the time of inspection.

Value reducing factors

No.	Component group	Description
1	Trim / covers	Floor mats (Vorne links) - Broken / torn - Replace
2	Rear bumper	Rear bumper - Scratch(es) - Smart repair
3	Boot lid / rear door	Boot lid (Unterteil) - Scratch(es) - Repair and paint

Wear and tear

No.	Component group	Description
1	Vehicle glazing	Windscreen - Stone chips - No deduction
2	Door - rear right side	Door handle - outside - Scratch(es) - No deduction
3	Wheel / tyres	Alloy rim - front left side - Scratch(es) - No deduction



No.	Component group	Description
4	Wheel / tyres	Alloy rim - rear right side - Scratch(es) - No deduction
5	Door - rear right side	Door - Scratch(es) - No deduction
6	2nd wheel set	2 tyres - Does not meet the leasing specifications - No deduction
7	2nd wheel set	1 alloy rim - Scratch(es) - No deduction
8	Instrument panel	Cover (SOS Abdeckung oben schließt schlecht) - No deduction

The vehicle shows signs of wear commensurate with its age and use.

Previous damages

No.	Previous damage	Extent of damage (Net)
1	Side right, Provided by user / customer, from 3 Feb 2022	738,23 €
2	Front, Side - left, Provided by user / customer, from 1 Oct 2024	9.527,15 €

Repainting

No.	Repainting
1	Roof rail - right side, Mudguard - right side, Door - front right side, Professionally carried out

Paint coat thickness measurement

Roof rail - right side	174 µm	Mudguard - right side	196 µm
Door - front right side	205 µm		

Order/Scope of order

The order was placed to prepare a sales report for the vehicle described. This includes the following:

- Description of core relevant information about the vehicle
- Documentation of equipment features
(Delivery by third-party service providers)
- Documentation of damage, defects, missing parts
- Documentation of previous damage, unrepaired previous damage, repainting
- a brief visual or functional inspection of the equipment details if possible.
(Functional tests of driver assistance systems are not included in the scope of services!)
- a photo documentation of the vehicle



Basis for the order

This product is based on the Alphabet Fuhrpark GmbH guidelines for vehicle returns and valuations. The expert makes the explicit findings in each individual case objectively within the framework of the specified standards based on his or her own expertise.

The vehicle inspection takes place in a disassembled state.

Damage or defects that can only be detected during disassembly/diagnosis work or through advanced knowledge remain within the scope of the prognosis risk. An extended risk exists for concealed defects caused by fraudulent deception and not identifiable by the expert.

Damage or defects resulting from normal use or wear and tear of the vehicle will be accepted according to the applicable standard.

There was no explicit identification or monetary consideration of the expected features within the product.

Features which in their nature and severity slightly exceed normal use but do not constitute unacceptable damage will be documented and identified under signs of use if necessary.

Damage or defects which, according to the underlying standard, can no longer be attributed to normal use or wear and tear are listed in the product under "Depreciating Factors".

Depending on the product specification, a monetary ID can be provided. If this takes place, the costs can be 100% d or pro rata depending on the vehicle's age and mileage.

Previous damages

According to available information previous damages were repaired at the vehicle. Traces of repairs, which allow conclusions about the area of repair, were not recognizable during the inspection.

Comments

- Winterradsatz ist kein Bestandteil des Auslieferumfangs.



Figure 1: Diagonal front (left)



Figure 2: Diagonal front (right)



Figure 3: Diagonal rear (left)



Figure 4: Diagonal rear (right)



Figure 5: Interior - front



Figure 6: Interior - rear



Figure 7: Instrument cluster



Figure 8: Instrument panel



Figure 9: interior 360° view



Figure 10: Cargo area



Figure 11: VIN



Figure 12: Mounted tyres



Figure 13: Documents



Figure 14: Documents



Figure 15: Navigation



Figure 16: Misc.



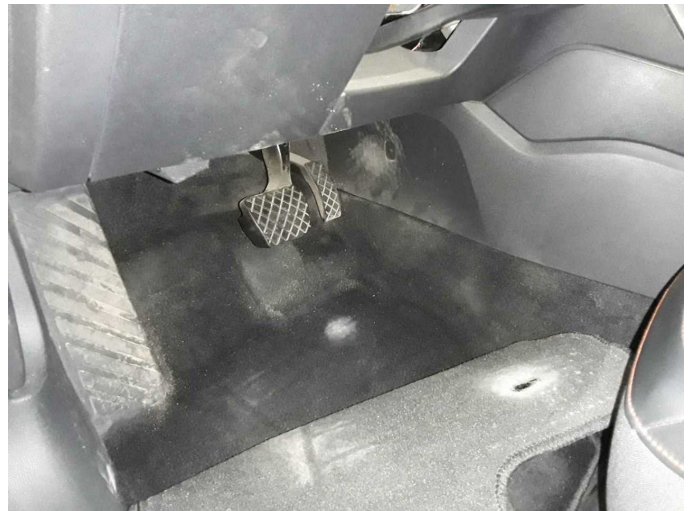
Figure 17: Misc.



Figure 18: Misc.



Figure 19: Misc.



Damage 1: Trim / covers: Floor mats (Vorne links) - Broken / torn - Replace



Damage 1: Trim / covers: Floor mats (Vorne links) - Broken / torn - Replace



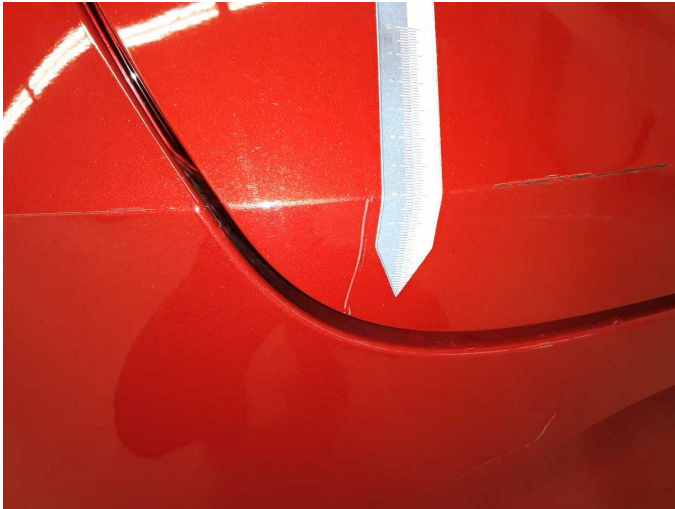
Damage 2: Rear bumper: Rear bumper - Scratch(es) - Smart repair



Damage 2: Rear bumper: Rear bumper - Scratch(es) - Smart repair



Damage 2: Rear bumper: Rear bumper - Scratch(es) - Smart repair



Damage 3: Boot lid / rear door: Boot lid (Unterteil) - Scratch(es) - Repair and paint



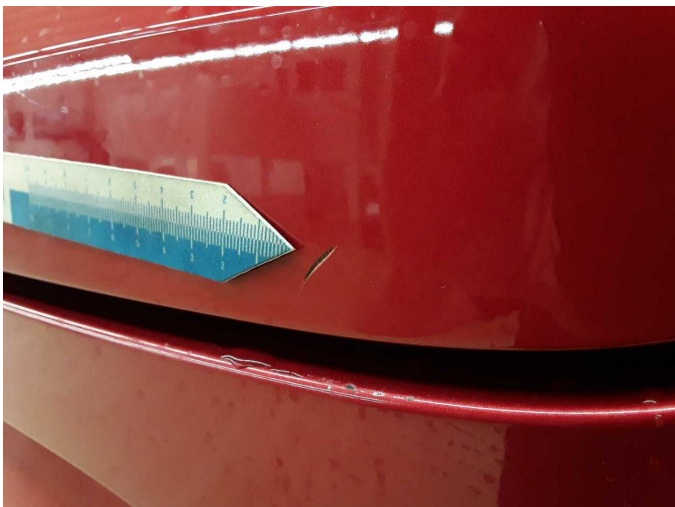
Damage 3: Boot lid / rear door: Boot lid (Unterteil) - Scratch(es) - Repair and paint



Damage 3: Boot lid / rear door: Boot lid (Unterteil) - Scratch(es) - Repair and paint



Damage 3: Boot lid / rear door: Boot lid (Unterteil) - Scratch(es) - Repair and paint



Damage 3: Boot lid / rear door: Boot lid (Unterteil) - Scratch(es) - Repair and paint



Damage 3: Boot lid / rear door: Boot lid (Unterteil) - Scratch(es) - Repair and paint



Roof rail - right side: 174 µm



Mudguard - right side: 196 µm



Door - front right side: 205 µm



Wartungshistorie

(gemäß Auftraggeber Informationen)

Fahrgestellnummer: VSSZZZKLZMR089570
Hersteller / Modell: SEAT SEAT Leon Sportstourer 2.0 TDI DSG FR

Datum	KM-Stand	Beschreibung
30.09.2024	31.531	Motoröl b. Wartung; Ölfilter ern; Ölwechsel; Reparatur Sonstiges; Systemtest/Eigendiagnose
20.08.2024	29.727	AU; Reparatur Sonstiges; Systemtest/Eigendiagnose; Wartung Sonstiges
02.11.2023	22.791	Bremsflüssigkeit; Bremsflüssigkeit ern; Motoröl b. Wartung; Ölfilter ern; Regelwartungsdienst; Reparatur Sonstiges; Systemtest/Eigendiagnose; Wartung Sonstiges
20.09.2022	12.388	Motoröl b. Wartung; Motoröl b. Wartung; Ölfilter ern; Ölfilter ern; Ölwechsel; Ölwechsel; Wartung Sonstiges; Wartung Sonstiges
17.09.2022	12.388	Motoröl b. Wartung; Ölwechsel