



Expertise

Protocol number: 41491930
Order No. / Reference: 25151563
Inspection date: 11 Sept 2025

Manufacturer: Seat	Model: Alhambra 2.0 TDI S&S DSG FR-LINE
VIN: VSSZZZ7NZLV513818	



Vehicle details	
Manufacturer / Type / Model / Equipment	
Seat Alhambra 2.0 TDI S&S DSG FR-LINE	
Vehicle Identification number	VSSZZZ7NZLV513818
Mileage (Read)	90,055 km
First registration	26 Aug 2020
Number of holders	1
Power / Engine displacement	110 kw / 1,968 ccm
Fuel type / Cylinder	Diesel / 4
Gearbox / Number of gears	Automatic / 6
Type of drive	Front drive
Type of vehicle	Van
Colour / colour code	Indium Grau Metallic (R7H)
Doors / Seats	5 / 7
Upholstery type	Alcantara / Leather
Colour of upholstery	Black-Anthracite



Vehicle details

Maintenance booklet / proof	Non-existent	Next maintenance in	1,000 km
Key is / should be	2 / 2	FZG documents	ZB#2 (B) was available (copy), ZB#1 (S) was not available
		Letter No.	FR339326
Previous damage / Accident	None detectable	Repainting	None detectable
Inspection conditions	sufficient	Lifting equipment / pit	yes
Test drive	Not performed	Engine function test	Performed
Manufacturer key number/ type code number	7593 / ALL 00123		
Emission standard	EURO6;WLTP;DG;PI/CI; M, N1 I	Fine dust sticker	
Permitted total weight	2,410 kg	Empty weight	

Tyres

Mounted tyres

#	Tyre size	Type of tyre	Manufacturer	Tread depth
1)	225/45 R18 95W	Summer tyres (with run-flat tyres) on Light alloy	Pirelli	5mm / 5mm
2)	225/45 R18 95Y	Summer tyres on Light alloy	Vredestein	7mm / 7mm

Additional tyres

#	Tyre size	Type of tyre	Manufacturer	Tread depth
1)	225/50 R17 98H	Winter tyres on Light alloy	Firestone	5mm / 5mm
2)	225/50 R17 98V	Winter tyres on Light alloy	Barum	8mm / 7mm

Replacement

Typ	Tyre size	Type of tyre	Manufacturer	Tread depth
	Tirefit	Expiration date 06/2027		

Legend: Tread depth information for tyres on the left is in the first place, for tyres on the right is in the second place on the axle in the direction of travel

Equipment

Standard equipment

- Shelves
- Airbag: Knee airbag system on the driver's side
- Airbag: Side airbag for driver and front passenger
- Exterior mirrors in Atom Grey
- Outside temperature display
- LED indicators integrated into the side of the exterior mirrors
- Roof rails in silver
- Electronic parking brake
- Automatic headlight switching
- Chassis: Sports suspension
- Luggage compartment cover
- Cruise control system GRA
- Rear lights with LED technology
- Rear window wiper
- Interior mirror automatically dimming
- Instrument use
- Electric child safety lock for the rear doors
- Air conditioning
- Headrests (2) front adjustable in height
- Steering wheel: Three-spoke leather steering wheel with multifunction controls
- Front center armrest with storage box
- Fatigue detection
- Fog lights with cornering light function
- Package: Chrome Package
- Package: Winter Package
- Rain sensor
- Wheels: Alloy wheels (4) 7.5 J x 18 "Akira" in Atom Grey
- Side and rear windows in thermal insulation glazing
- Sliding doors rear left and right
- Side windows from 2nd row and rear window dark tinted
- Seat belts: 3 three-point automatic rear
- Seats: 3 individual seats in the 2nd row
- Seats: Driver's seat with electric backrest adjustment
- Seats: Front seats with height adjustment and lumbar support
- Start-stop system with brake energy recovery
- Daytime running light
- Blind spot assist
- Ultrasonic parking aid, front and rear
- Traffic sign recognition
- Lashing eyes in the luggage compartment
- Warning light for open doors and luggage compartment
- Xenon light: Bi-Xenon with cornering light
- Airbag driver and passenger side
- Airbag: Head airbag system for front and rear passengers
- Exterior mirrors electrically adjustable, heated and foldable with ambient lighting,
- Lighting
- Brake light, third
- Chrome applications interior
- DPF (diesel particulate filter)
- Electronic Stability Program (ESP) with counter-steering support
- Electric windows front and rear
- Luggage compartment floor
- Transmission: 6-speed DSG
- Heated rear window
- Interior light front and rear with switch-off delay
- Instrument lighting
- ISOFIX child seat securing system, triple in the 2nd row of seats
- Comfort indicators
- Headrests (3) rear
- Steering column with height and length adjustment
- Make-up mirrors in the sun visors, illuminated
- Multifunctional display with color display
- Navigation system
- Package: Alcantara
- Package: Smoker's Package
- Upholstery: Seat covers in Alcantara/leather look
- Tire pressure monitoring indicator
- Rear view camera
- Headlight cleaning system
- Keyless locking and starting system Kessy
- Power steering
- Seat belts: three-point automatic front, height-adjustable
- Seats: Passenger seat backrest completely foldable
- Seats: Sport comfort seats in the front
- Sun blinds on the rear door windows
- Lane departure warning system
- 12V socket
- Bag hooks in the luggage compartment
- Front door sills
- "Front Assist" environment monitoring system with City Emergency Braking function
- Automatic hazard warning lights during emergency braking
- Electronic immobilizer
- Central locking including tailgate with radio remote control

Extra equipment



- Package: Business COMFORT (Adaptive Cruise Control - High Beam Assistant - External antenna connection in the center armrest storage compartment - DAB+ - Full Link - MirrorLinkTM - Android Auto - Apple CarPlay - Anti-theft alarm system with interior monitoring including backup horn and tow-away protection)
- Package: Luggage compartment package (luggage net - mesh partition - rails on side walls with tensioning strap (fixable))
- Parking assistant (including ultrasonic parking aid front and rear)
- Roof: Panoramic glass sunroof, electric (with sunblind)
- Seats: 7-seater with auxiliary heating (3 individual seats in the 2nd row - 2 individual seats in the 3rd row - Easy-Entry entry system - Climatronic dual air conditioning system with separate temperature control in the front and rear - warning tone for unfastened seat belts)
- Airbag: Rear side airbags
- Package: Business COMFORT PLUS (Seat package - electrically adjustable driver and front passenger seats, driver's seat with memory function - electrically adjustable lumbar support in driver and front passenger seats - massage function for driver's seat - exterior mirrors with memory function, left and right electrically operated sliding doors with closing aid, electrically operated tailgate including sensor-controlled opening)
- Package: Technology Package (exterior mirrors with passenger mirror lowering - 230 V socket, on the rear center console)
- Paintwork: metallic paint
- Tow bar, pivoting with electric release
- Zubehör Winterräder

Brief expert findings

Documents submitted	At the time of the inspection, the registration certificate Part 2 (letter) was available, but the registration certificate Part 1 (certificate) was not. (Copy)
VIN comparison	The vehicle identification number (VIN) was read from the vehicle and its conformity with the submitted documents was verified during the inspection by the undersigned.
Inspection	The inspection conditions were sufficient for the assessment of the vehicle. Lifting equipment and a pit were available for examining the vehicle.
Test drive	No test drive/maneuvering was carried out during the inspection of the vehicle.
Engine function test	An engine test run was performed.

Value reducing factors

No.	Component group	Description
1	Misc.	Inspection / maintenance - No evidence - No deduction
2	Door - front right side	Door - dent(s) - Smart repair
3	Sliding door - left side	Sliding door - Dent / paintcoat damage - Smart repair
4	Roof	Roof (Harz) - Soiled - Clean
5	Front bumper	Front bumper (Harz) - Soiled - Clean
6	Instrument panel	Air nozzle - centre - Damaged - Replace
7	Bonnet	Bonnet (+ Harz) - Stone chips - Paint
8	Sliding door, right	Sliding door - Dent / paintcoat damage - Repair and paint
9	Rear bumper	Rear bumper - Scratch(es) - Paint

Wear and tear

No.	Component group	Description
1	Trim / covers	Boot lid - interior trim - Scratch(es) - No deduction
2	Boot lid / rear door	Boot lid - dent(s) - No deduction
3	Vehicle glazing	Windscreen - Stone chips - No deduction
4	Headlight	Headlight - right side - Stone chips - No deduction
5	Headlight	Headlight - left side - Stone chips - No deduction
6	Mudguard - right side	Mudguard - right side - Stone chips - No deduction
7	Wheel / tyres	Alloy rim - rear right side - Scratch(es) - No deduction
8	Wheel / tyres	Alloy rim - front right side - Scratch(es) - No deduction
9	Braking system	Brake fluid - No evidence - No deduction



No.	Component group	Description
10	Misc.	Inspection / maintenance - No evidence - No deduction
The vehicle shows signs of wear commensurate with its age and use.		

Missing parts

Description

Documents - Service book

Order/Scope of order

The order was placed to prepare a sales report for the vehicle described. This includes the following:

- Description of core relevant information about the vehicle
- Documentation of equipment features
(*Delivery by third-party service providers*)
- Documentation of damage, defects, missing parts
- Documentation of previous damage, unrepaired previous damage, repainting
- a brief visual or functional inspection of the equipment details if possible.
(*Functional tests of driver assistance systems are not included in the scope of services!*)
- a photo documentation of the vehicle

Basis for the order

This product is based on the Alphabet Fuhrpark GmbH guidelines for vehicle returns and valuations. The expert makes the explicit findings in each individual case objectively within the framework of the specified standards based on his or her own expertise.

The vehicle inspection takes place in a disassembled state.

Damage or defects that can only be detected during disassembly/diagnosis work or through advanced knowledge remain within the scope of the prognosis risk. An extended risk exists for concealed defects caused by fraudulent deception and not identifiable by the expert.

Damage or defects resulting from normal use or wear and tear of the vehicle will be accepted according to the applicable standard.

There was no explicit identification or monetary consideration of the expected features within the product.

Features which in their nature and severity slightly exceed normal use but do not constitute unacceptable damage will be documented and identified under signs of use if necessary.

Damage or defects which, according to the underlying standard, can no longer be attributed to normal use or wear and tear are listed in the product under "Depreciating Factors".

Depending on the product specification, a monetary ID can be provided. If this takes place, the costs can be 100% d or pro rata depending on the vehicle's age and mileage.

Previous damages

Apparently, no repaired previous damage could be found on the vehicle.



Figure 1: Diagonal front (left)



Figure 2: Diagonal front (right)



Figure 3: Diagonal rear (left)



Figure 4: Diagonal rear (right)

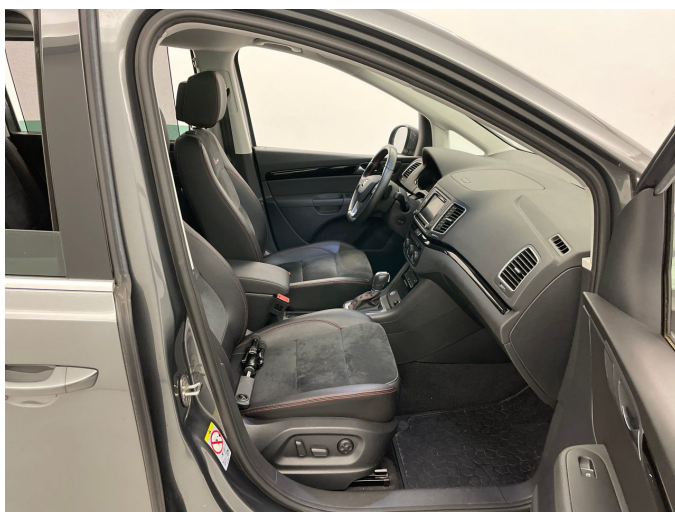


Figure 5: Interior - front



Figure 6: Interior - rear



Figure 7: Instrument cluster



Figure 8: Instrument panel



Figure 9: Interior 360° view



Figure 10: Cargo area

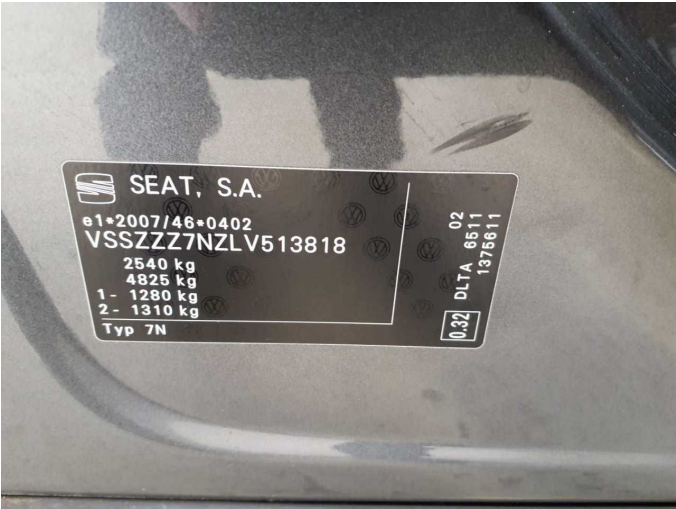


Figure 11: VIN



Figure 12: Mounted tyres

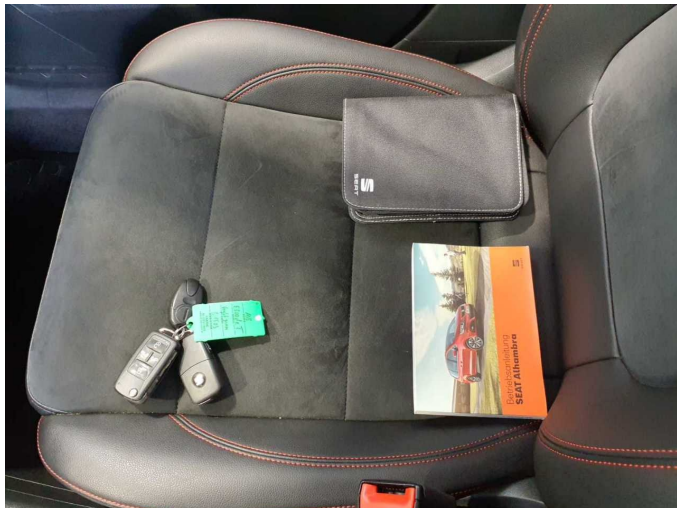


Figure 13: Documents



Figure 14: Documents



Figure 15: Additional tyres



Figure 16: Navigation



Figure 17: Misc.

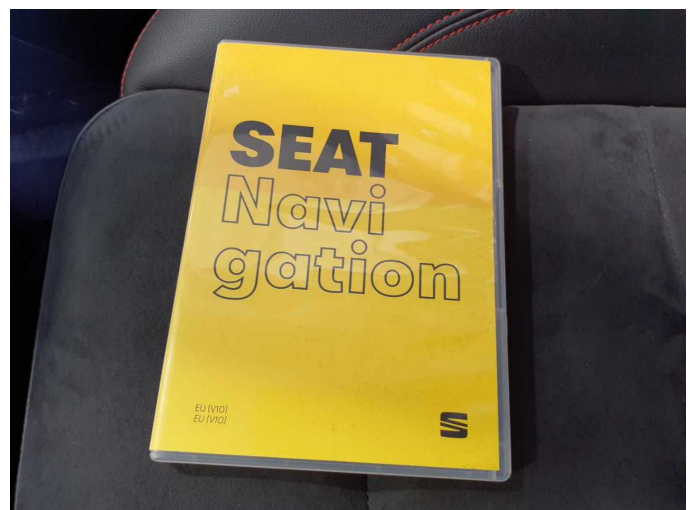


Figure 18: Misc.



Figure 19: Misc.



Figure 20: Misc.



Figure 21: Misc.



Figure 22: Misc.



Figure 23: Misc.



Figure 24: Misc.



Figure 25: Misc.



Figure 26: Misc.



Figure 27: Misc.



Figure 28: Misc.



Figure 29: Misc.



Damage 2: Door - front right side: Door - dent(s) - Smart repair



Damage 2: Door - front right side: Door - dent(s) - Smart repair



Damage 3: Sliding door - left side: Sliding door - Dent / paintcoat damage - Smart repair



Damage 3: Sliding door - left side: Sliding door - Dent / paintcoat damage - Smart repair



Damage 3: Sliding door - left side: Sliding door - Dent / paintcoat damage - Smart repair



Damage 3: Sliding door - left side: Sliding door - Dent / paintcoat damage - Smart repair



Damage 4: Roof: Roof (Harz) - Soiled - Clean



Damage 4: Roof: Roof (Harz) - Soiled - Clean



Damage 5: Front bumper: Front bumper (Harz) - Soiled - Clean



Damage 5: Front bumper: Front bumper (Harz) - Soiled - Clean



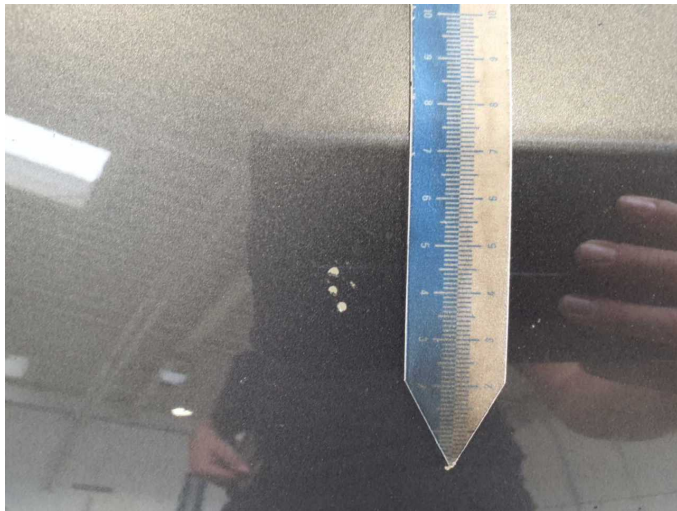
Damage 6: Instrument panel: Air nozzle - centre - Damaged - Replace



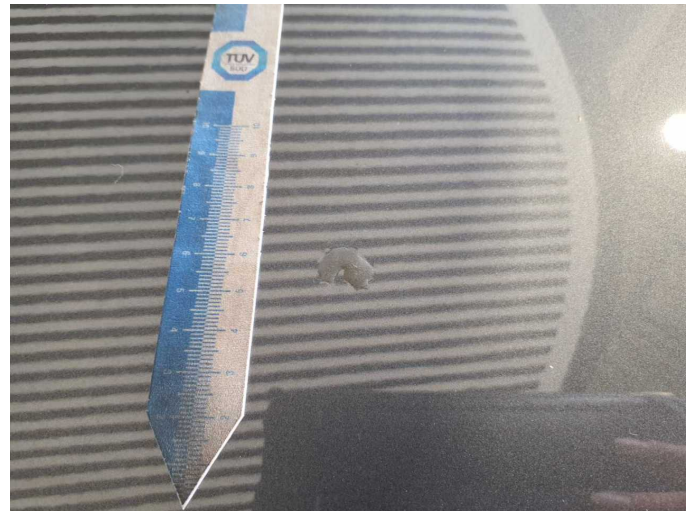
Damage 6: Instrument panel: Air nozzle - centre - Damaged - Replace



Damage 7: Bonnet: Bonnet (+ Harz) - Stone chips - Paint



Damage 7: Bonnet: Bonnet (+ Harz) - Stone chips - Paint



Damage 7: Bonnet: Bonnet (+ Harz) - Stone chips - Paint



Damage 8: Sliding door, right: Sliding door - Dent / paintcoat damage - Repair and paint



Damage 8: Sliding door, right: Sliding door - Dent / paintcoat damage - Repair and paint



Damage 8: Sliding door, right: Sliding door - Dent / paintcoat damage - Repair and paint



Damage 8: Sliding door, right: Sliding door - Dent / paintcoat damage - Repair and paint



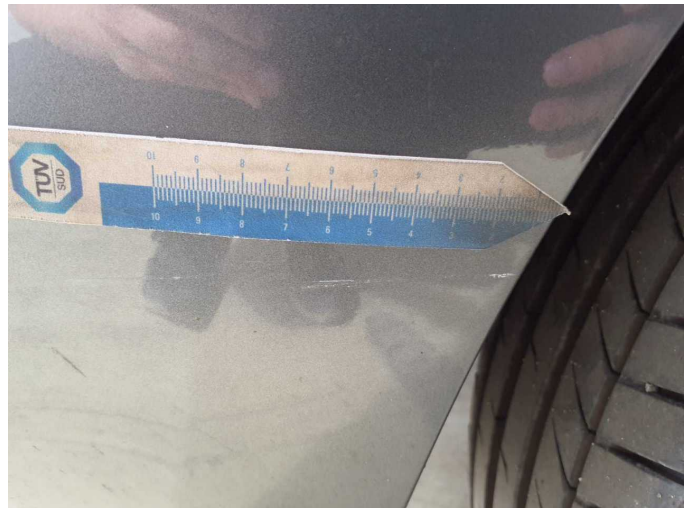
Damage 8: Sliding door, right: Sliding door - Dent / paintcoat damage - Repair and paint



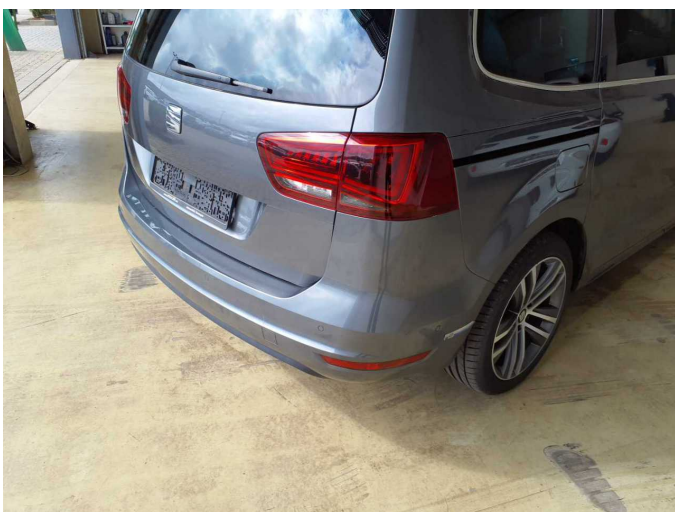
Damage 8: Sliding door, right: Sliding door - Dent / paintcoat damage - Repair and paint



Damage 9: Rear bumper: Rear bumper - Scratch(es) - Paint



Damage 9: Rear bumper: Rear bumper - Scratch(es) - Paint



Damage 9: Rear bumper: Rear bumper - Scratch(es) - Paint



Damage 9: Rear bumper: Rear bumper - Scratch(es) - Paint



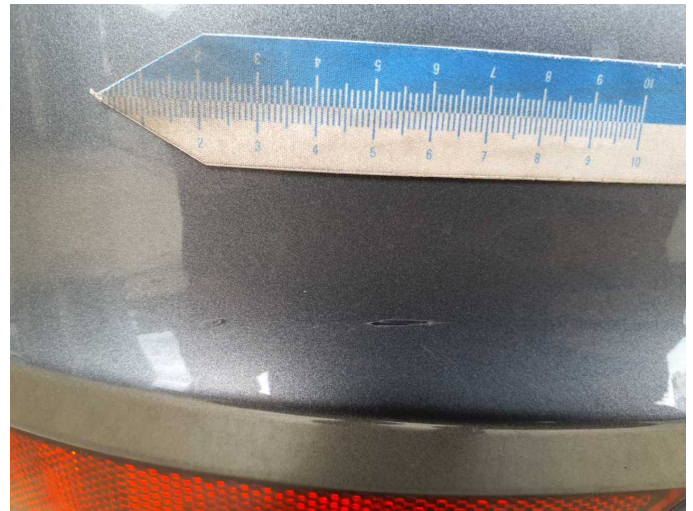
Damage 9: Rear bumper: Rear bumper - Scratch(es) - Paint



Damage 9: Rear bumper: Rear bumper - Scratch(es) - Paint



Damage 9: Rear bumper: Rear bumper - Scratch(es) - Paint



Damage 9: Rear bumper: Rear bumper - Scratch(es) - Paint



Wear and tear 7: Wheel / tyres: Alloy rim - rear right side - Scratch(es) - No deduction



Wear and tear 7: Wheel / tyres: Alloy rim - rear right side - Scratch(es) - No deduction



Wear and tear 8: Wheel / tyres: Alloy rim - front right side - Scratch(es) - No deduction



Wear and tear 8: Wheel / tyres: Alloy rim - front right side - Scratch(es) - No deduction



Wear and tear 8: Wheel / tyres: Alloy rim - front right side - Scratch(es) - No deduction