



SEAT Alhambra

Alhambra 2.0 TDI Ecomotive

VIN NO VSSZZZ7NZFV521638
Registration Number NZFV521638



MOT Date	Number of Owners	Number of Keys	Odometer Reading
2026-02-01	2	2	148399 km
Last Service	Last Service Mileage	First Registration Date	Country First Registered
2022-01-07	113818	2015-08-11	Germany

Inspection Report Summary

Customer	BCA Online	Report Number	P20250909115441
Inspection Date / Place	2025-09-09 / BCA Neuss	Cosmetic Grade	4

Vehicle Summary

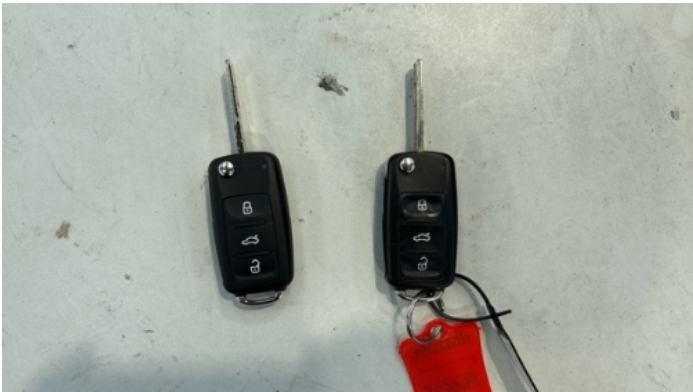
Vehicle Condition	Runner	VAT Type	Margin
Fuel Type	Diesel	Road Worthy	Yes
Colour	Grey	Engine Size (cc)	1968
Engine Size	2.0	No of Doors	5
Body Type	Stationwagon / Estate	Drive Train	Front
Seat Colour		No of Seats	5
Seat Covering Name	Schwarz	Seat Covering	Cloth
Charging Cables		NEDC CO2 Rating (q/km)	143
Gearbox Type	Manual		

Vehicle History & Documents

Service Book Available	Present	Next Service Mileage	km
Previous Usage		Imported	No
Manufacturer Warrenty			







Equipment

Tinted Glass	Airbag Status	Anti-lock braking	Cruise control
Front parking sensors	Remote adjusting wing mirrors	Reversing Camera	Satellite navigation
CD Player	Leather steering wheel	Rear parking sensors	Tow ball
Alloys wheels	Bluetooth telephone interface	Diesel particulate filter	Heated wing mirrors
Remote central locking	Roof rails	Stability control	Electrically folding wing mirrors

Radio

Equipment Details

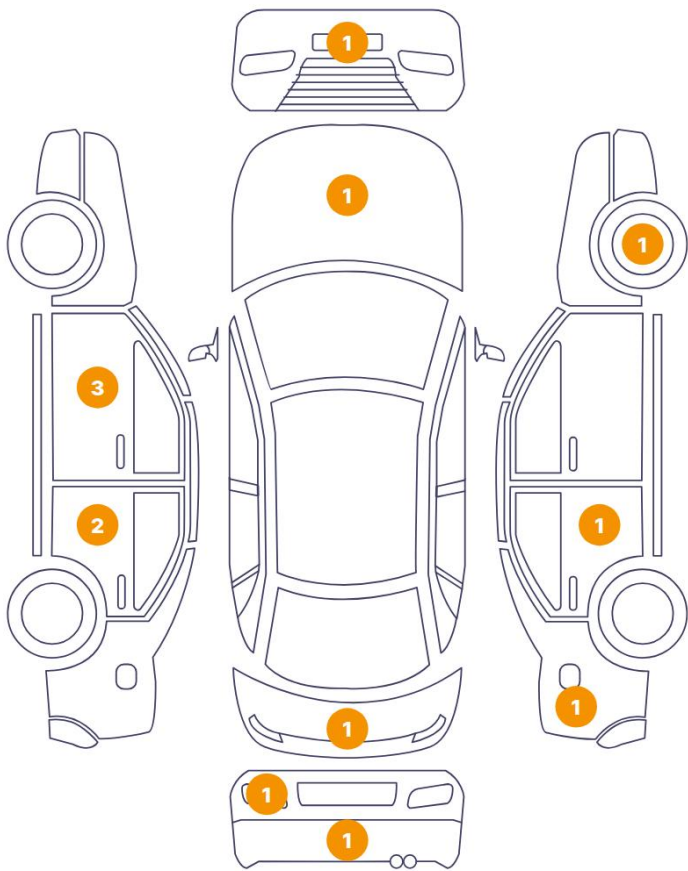
Air Conditioning	Three Zone Climate Control	Alloy Wheel Size	17
Seat Heating	Front and Rear		

Wheels & Tyres

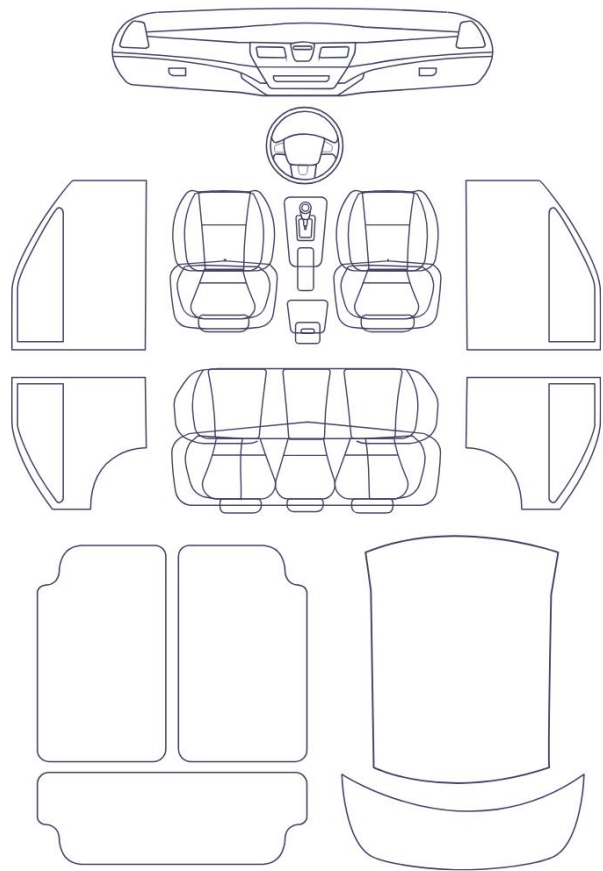
Right Front Tyre Depth	5	Left Front Tyre Depth	5
Right Rear Tyre Depth	5	Left Rear Tyre Depth	5

Cosmetic Damage

13 Schäden



0 Schäden



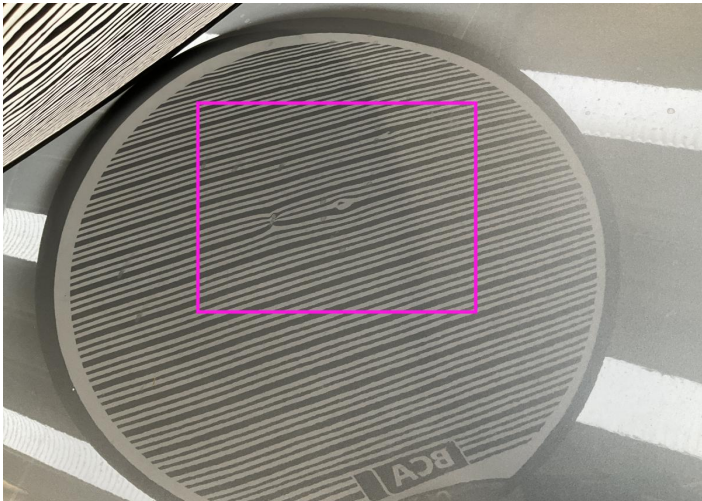
Component		Damage	Comments
1	Fender / Back Right	Paint / Poor Previous Repair	
2	Hood	Bodywork / Dent / Dent	
3	Door / Front Left	Bodywork / Dent / Dent	
4	Door / Front Left	Paint / Scratch / Scuff	
5	Pillar / Front Left	Paint / Scratch / Scuff	
6	Door / Back Left	Paint / Scratch / Scuff	
7	Pillar / Back Left	Bodywork / Dent / Dent	
8	Reflector / Back Left	Bodywork / Breakage	
9	Bumper / Back	Paint / Scratch / Scuff	
10	Tailgate	Paint / Poor Previous Repair	
11	Door / Back Right	Paint / Stone Chip	
12	Rim / Front Right	Out of Bodywork / Scratch	

13 Bumper / Front

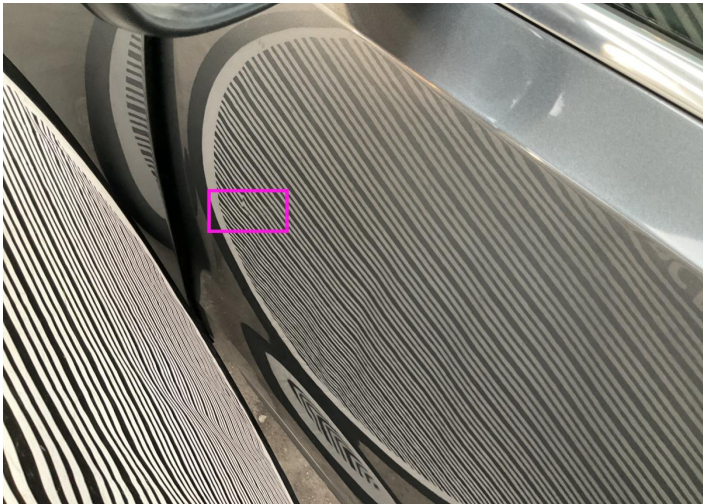
Paint / Scratch / Scuff



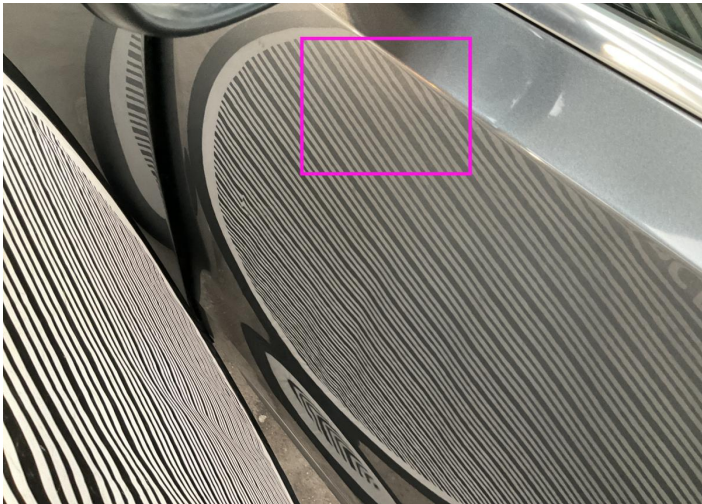
1. Fender / Back Right
Paint / Poor Previous Repair -



2. Hood
Bodywork / Dent / Dent -



3. Door / Front Left
Bodywork / Dent / Dent -



4. Door / Front Left
Paint / Scratch / Scuff -



5. Pillar / Front Left
Paint / Scratch / Scuff -



6. Door / Back Left
Paint / Scratch / Scuff -



7. Pillar / Back Left
Bodywork / Dent / Dent -



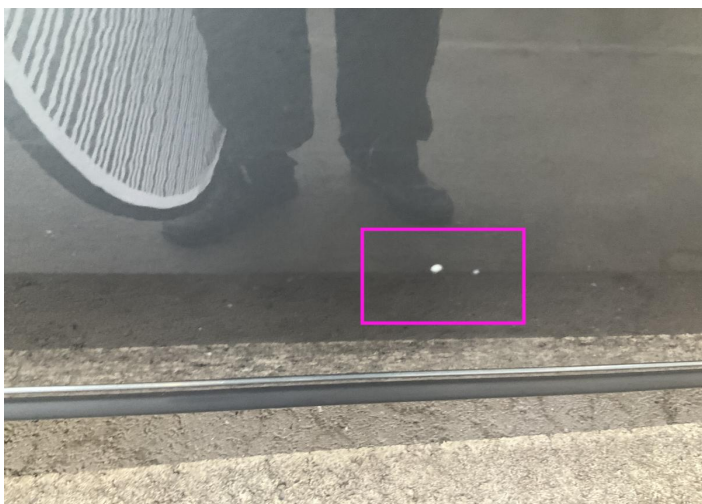
8. Reflector / Back Left
Bodywork / Breakage -



9. Bumper / Back
Paint / Scratch / Scuff -



10. Tailgate
Paint / Poor Previous Repair -



11. Door / Back Right
Paint / Stone Chip -



12. Rim / Front Right
Out of Bodywork / Scratch -



13. Bumper / Front
Paint / Scratch / Scuff -

Mechanical Condition

Control Lights

Display Defect	✓	ABS Warning Light	✓
ESP Fault/Traction Control Malfunction Light	✓	Diesel Particulate Filter Light	✓
Airbag Warning Light	✓	Oil Pressure Warning Light	✓
Brake Warning Light	✓	Power Steering Warning Light	✓
Alternator / Battery	✓	No Dashboard Lights	✓
Tire Pressure Monitoring System	✓		

Equipments Test

Main & Spare Keys Functioning	!	Electric Windows	✓
Navigation System	✓	Parking Sensors / Cameras Functioning	✓
AC / Heating System	✓		

Engine

Engine Status / EML	✓	Engine Leak Visible	!
Engine Starts	✓		

Gearbox

Gear Box	✓
----------	---

Levels

Brakes Fluid	NA	Coolant Fluid	!
--------------	----	---------------	---

Test Drive Inspection

Steering Wheel			
Steering Noise / Anomaly		✓	
Engine			
Engine Noise	✓	The Gears Scratch / Skip / Abnormal Operation	✓
Fume Quantity	✓	Power Loss	✓
Clutch			
Clutch Functioning		✓	
Brake			
Brake System Anomaly		✓	
General			
Test Driven Status		✓	
✓ <i>No troubles detected, good condition or correct tests, according to vehicle age and mileage</i>			
! <i>Damages or malfunction detected that requires repairs by the buyer</i>			
NA <i>Not applicable</i>			
= <i>Not tested</i>			

Disclaimer

Please also note the "UserGuide condition report", which shows the scope of the vehicle description.

[User Guide](#)