



## SEAT Ibiza Ibiza 1.2 12V

VIN NO VSSZZZ6LZ8R114032

Registration Number LZ8R114032



MOT Date



Last Service



Number of Owners



Last Service Mileage



Number of Keys



First Registration Date



Odometer Reading



Country First Registered



### Inspection Report Summary

Customer	BCA Online	Report Number	P20250909141951
Inspection Date / Place	2025-09-09 / Dello Neumünster-Nord	Cosmetic Grade	5

### Vehicle Summary

Vehicle Condition	Runner	VAT Type	Margin
Fuel Type	Petrol	Road Worthy	Yes
Colour	Grey	Engine Size (cc)	1198
Engine Size	1.2	No of Doors	3
Body Type	Sedan	Drive Train	Front
Seat Colour		No of Seats	5
Seat Covering Name	Schwarz	Seat Covering	Cloth
Charging Cables		NEDC CO2 Rating (q/km)	138
Gearbox Type	Manual		

### Vehicle History & Documents

Service Book Available	Full Service History	Next Service Mileage	km
Previous Usage		Imported	No
Manufacturer Warranty			







Equipment

Trip Computer	Airbag Status	Auxiliary Socket	CD Player
Radio	USB Socket	Anti-lock braking	Stability control
Central locking			

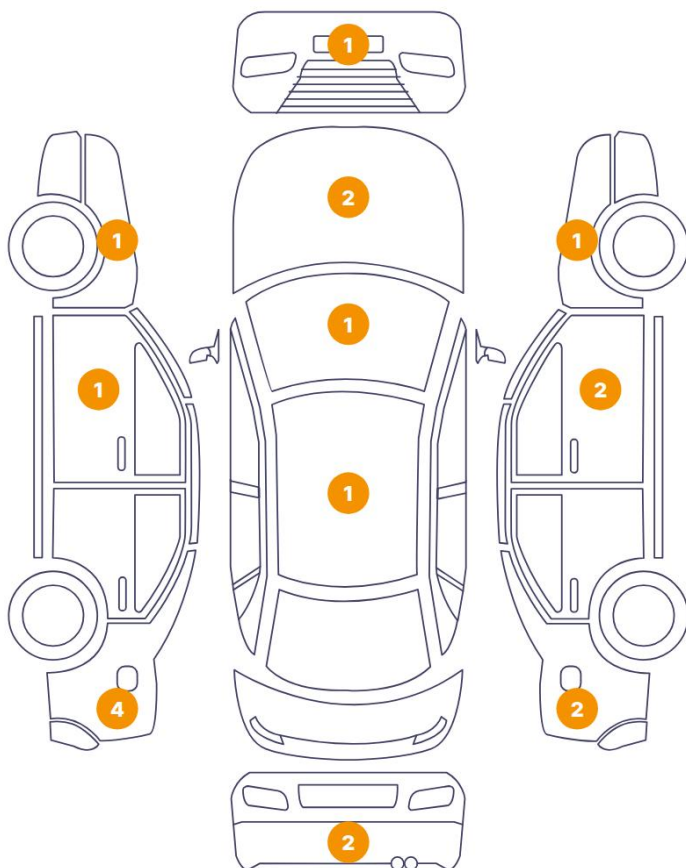
Equipment Details

Air Conditioning	No	Seat Heating	No
------------------	----	--------------	----

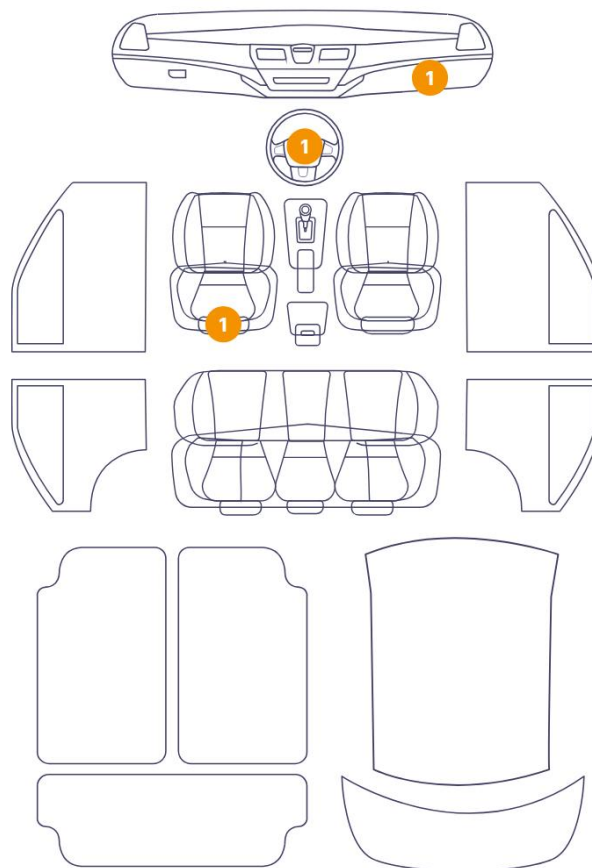
Wheels & Tyres

Right Front Tyre Depth	3	Left Front Tyre Depth	3
Right Rear Tyre Depth	3	Left Rear Tyre Depth	3

## 18 Schäden



### 3 Schäden

6/13 - Report Number P20250909141951

13	Fender / Back Right	Paint / Scratch / Scuff
14	Door / Front Right	Bodywork / Dent / Dent
15	Mirror / Front Right	Paint / Scratch / Scuff
16	Fender / Front Left	Paint / Corrosion
17	Roof	Bodywork / Dent / Hail Area
18	Seat / Front Left	Interior / Ripped
19	Steering Wheel / Front	Interior / Worn - out
20	Dashboard / Front	Interior / Not Working
21	Windshield Wiper Blade / Front Left	Bodywork / Breakage / Crack



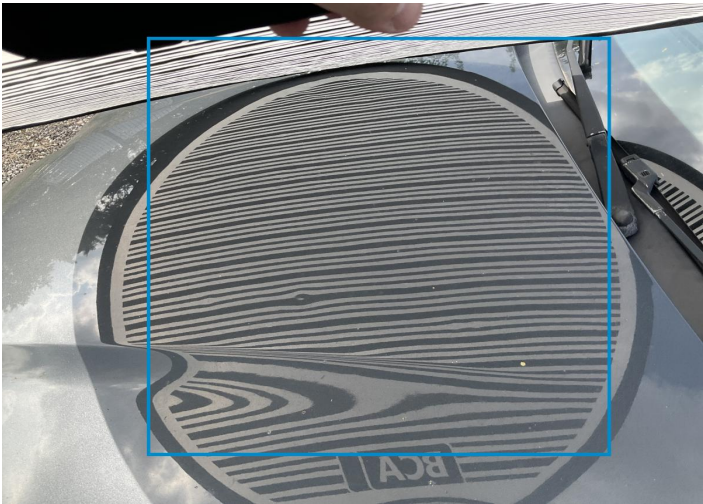
1. Door / Front Left  
Paint / Poor Previous Repair -



2. Fender / Back Left  
Paint / Poor Previous Repair -



3. Fender / Front Right  
Paint / Poor Previous Repair -



4. Hood  
Bodywork / Dent / Hail Area -



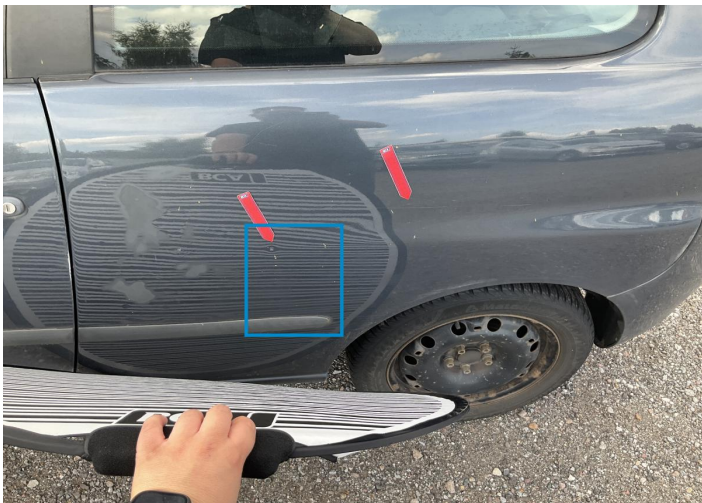
5. Hood  
Paint / Corrosion -



6. Bumper / Front  
Paint / Scratch / Scuff -



7. Fender / Back Left  
Paint / Poor Previous Repair -



8. Fender / Back Left  
Bodywork / Dent / Dent -



9. Fender / Back Left  
Paint / Scratch / Scuff -



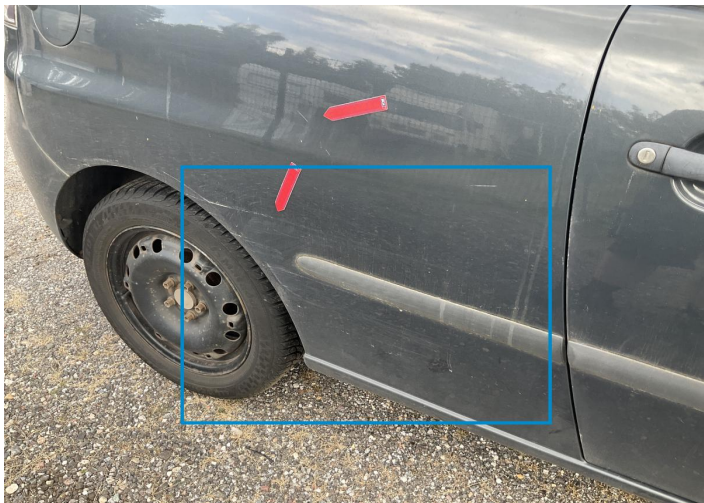
10. Bumper / Back  
Bodywork / Breakage / Crack -



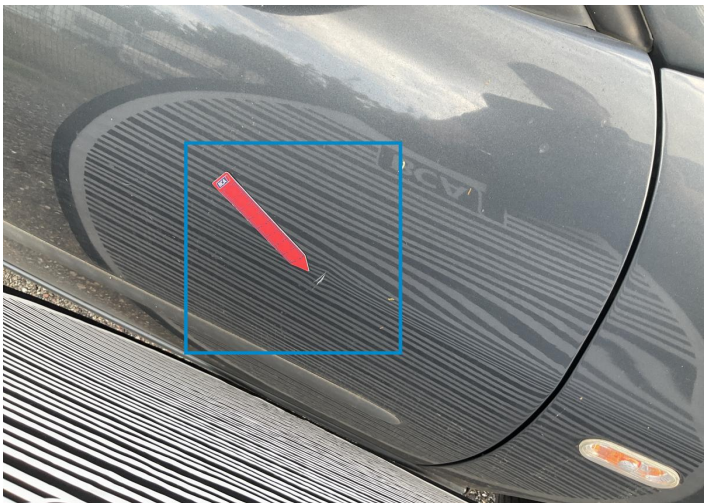
11. Bumper / Back  
Paint / Scratch / Scuff -



12. Fender / Back Right  
Paint / Scratch / Scuff -



13. Fender / Back Right  
Paint / Scratch / Scuff -



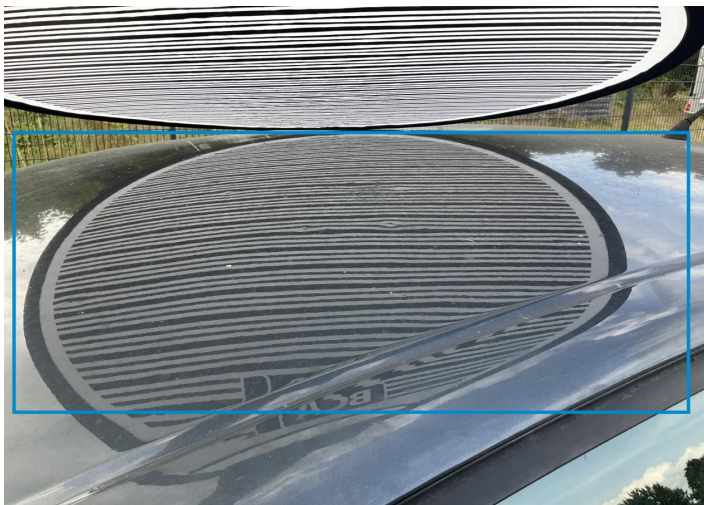
14. Door / Front Right  
Bodywork / Dent / Dent -



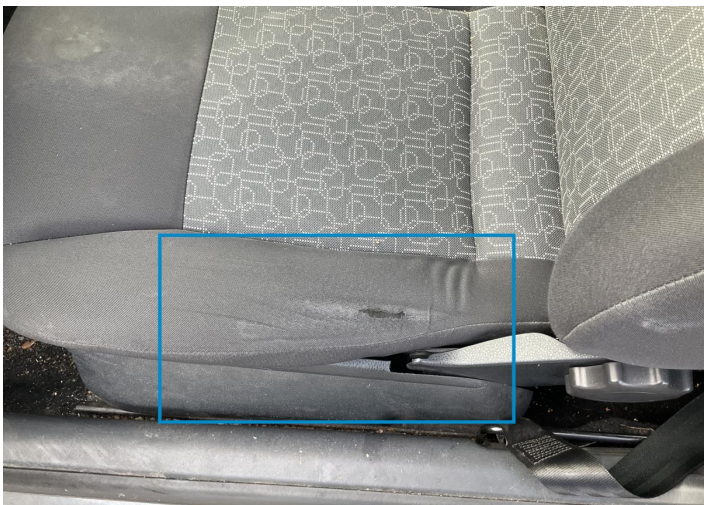
15. Mirror / Front Right  
Paint / Scratch / Scuff -



16. Fender / Front Left  
Paint / Corrosion -



17. Roof  
Bodywork / Dent / Hail Area -



18. Seat / Front Left  
Interior / Ripped -



19. Steering Wheel / Front  
Interior / Worn - out -



20. Dashboard / Front  
Interior / Not Working -



21. Windshield Wiper Blade / Front Left  
Bodywork / Breakage / Crack -

## Mechanical Condition

### Equipments Test

Central Locking	❗	Audio Equipment	❗
AC / Heating System	✓	Other Equipments	✓

### Control Lights

ABS Warning Light	✓	ESP Fault/Traction Control Malfunction Light	✓
Airbag Warning Light	✓	Oil Pressure Warning Light	✓
Brake Warning Light	✓	Power Steering Warning Light	✓
Alternator / Battery	✓	No Dashboard Lights	✓
Display Defect	✓	Service Light	❗
Tire Pressure Monitoring System	✓		

### Engine

Engine Status / EML	✓	Engine Leak Visible	❗
Engine Starts	✓		

### Gearbox

Gear Box	✓
----------	---

### Levels

Brakes Fluid	✓	Coolant Fluid	❗
--------------	---	---------------	---

Test Drive Inspection

Steering Wheel


Steering | Noise / Anomaly 

Engine


Engine Noise  The Gears Scratch / Skip / Abnormal Operation 

Fume Quantity  Power Loss 

Brake

Brake System Anomaly 


General

Test Driven Status 

 *No troubles detected, good condition or correct tests, according to vehicle age and mileage*

 *Damages or malfunction detected that requires repairs by the buyer*

 *Not applicable*

 *Not tested*

Disclaimer

*Please also note the "UserGuide condition report", which shows the scope of the vehicle description.*

[User Guide](#)