



Expertise

Protocol number: 39795562
Order No. / Reference: 24708405
Inspection date: 20 May 2025

Manufacturer: Seat

Model: Ateca 1.5 TSI ACT DSG OPF Style

VIN: VSSZZZ5FZN6513600



Vehicle details	
Manufacturer / Type / Model / Equipment	
Seat Ateca 1.5 TSI ACT DSG OPF Style	
Vehicle Identification number	VSSZZZ5FZN6513600
Mileage (Read)	138,677 km
First registration	10 May 2022
Number of holders	1
Next periodical technical inspection	05/2025
(Report not on hand)	
Power / Engine displacement	110 kw / 1,498 ccm
Fuel type / Cylinder	Petrol / 4
Gearbox / Number of gears	Automatic / 7
Type of drive	Front drive
Type of vehicle	SUV
Colour / colour code	Reflex Silber Metallic
Doors / Seats	5 / 5
Upholstery type	Alcantara / Leather
Colour of upholstery	Black-Anthracite



Vehicle details

Maintenance booklet / proof	digital proof / incomplete	Next maintenance in	10,400 km
Last maintenance on / at	12/2024 at 119,055 km		
Key is / should be	2 / 2	FZG documents	ZB#2 (B) was available (copy), ZB#1 (S) was not available
		Letter No.	GG157248
Previous damage / Accident	None detectable	Repainting	None detectable
Inspection conditions	Sufficient	Lifting equipment / pit	yes
Test drive	Not performed	Engine function test	Performed
Manufacturer key number/ type code number	7593 / AOB 00215		
Emission standard	EURO6;WLTP;AP;PI/CI; M, N1 I	Fine dust sticker	
Permitted total weight	1,930 kg	Empty weight	

Tyres

Mounted tyres

#	Tyre size	Type of tyre	Manufacturer	Tread depth
1)	215/55 R17 98V	Winter tyres on Light alloy	Pirelli	5mm / 5mm
2)	215/55 R17 94H	winter tires (with run-flat tires) on Light alloy	Pirelli	6mm / 6mm

Additional tyres

#	Tyre size	Type of tyre	Manufacturer	Tread depth
1)	215/55 R17 94V	Summer tyres on Light alloy	Goodyear	6mm / 6mm
2)	215/55 R17 94V	Summer tyres on Light alloy	Continental	7mm / 7mm

Replacement

Typ	Tyre size	Type of tyre	Manufacturer	Tread depth
	Tirefit	Expiration date 09/2025		

Legend: Tread depth information for tires on the left is in the first place, for tires on the right is in the second place on the axle in the direction of travel



Equipment

Equipment

- Klimaautomatik

Standard equipment

- | | |
|--|--|
| <ul style="list-style-type: none"> • 12-V socket at the front • Storage compartment in the middle area of the lower dashboard • storage pocket on the back of the front seats • Exterior mirrors electrically adjustable, folding and heated • Outside temperature display • On-board computer • differential lock, electronic (XDS) • Three-point automatic seat belts, front and rear, with belt tensioners • Electronic Stabilization Control (ESC) • footwell lighting • Luggage compartment cover • Transmission: 7-speed DSG automatic transmission • taillights in LED technology • ISOFIX child seat securing system • headrests, 2 front, 3 rear • Steering wheel: Multifunction steering wheel in leather • Armrest - centre, rear • Multifunctional display with multi-color display • Fatigue detection • Emergency call service • Upholstery: Cloth • Radio: Media System Plus Style, Xperience, FR • Wheels: 4 light alloy wheels "Dynamic" • Rear seat backrest asymmetrically split and foldable • SEAT CONNECT • Seats: Driver's seat with height adjustment • start-stop technology • Daytime running lights in LED technology • Lashing eyes in the luggage compartment • Full-LED headlights • Thermal insulation glazing | <ul style="list-style-type: none"> • storage compartment for sunglasses on the driver's side • storage compartment in the front doors • storage compartment under the driver's seat • Airbags • Exterior mirror housings in body color • Hill Start Assist (HHC) • chrome applications in the interior • tachometer • Third brake light, integrated in the tailgate • Electronic parking brake including auto-hold function • Electric windows front and rear • gear recommendation display • Cruise control system (GRA) • Glove compartment, illuminated • rear window wiper and rear window heating • Climatronic air conditioning system with electronic temperature control • reading lights, 2 front and 2 rear • Center console with integrated storage compartment, center armrest cup holder and rear air vent • fog lights with cornering light function in LED technology • Gasoline particulate filter • Radio: Digital radio reception DAB+ • Tire Pressure Monitoring System (TPMS) • Wheels: Tyre fit • Shift paddles on the steering wheel • Power steering, electromechanical • Seats: Lumbar support for driver and front passenger with height adjustment for front passenger seat • "Front Assist" environment monitoring system with City Emergency Braking function • Electronic immobilizer • Central locking, including tailgate, with radio remote control |
|--|--|

Extra equipment

- | | |
|--|---|
| <ul style="list-style-type: none"> • Navigation system with 9.2" color touchscreen (online infotainment function - prepared for the use of extended mobile online services - voice control - navigation data including MAPCARE) • Package: Driving Assistance Package L for navigation (Automatic Adaptive Cruise Control (ACC) up to 210 km/h with predictive cruise control - High Beam Assistant - Lane Keeping Assistant - Traffic Sign Recognition - Side Assist - PreCrash Assist) | <ul style="list-style-type: none"> • Package: Design Exterior Package "Black" (roof rails in black - body covers on the wheel arches) • Package: Dinamica (seat center panel in Dinamica microfiber, color black - comfort seats in the front) • Package: Light and Vision (Automatic Coming Home and Leaving Home function - Interior mirror automatically dimming - Light sensor with automatic headlight switching - Rain sensor) • Package: Winter (multifunction steering wheel in leather, heated - front seats heated) |
|--|---|



- | | |
|--|---|
| <ul style="list-style-type: none">• Radio accessories: Full Link for navigation system (MirrorLink (compatible with Android smartphones from MirrorLink version 1.1) - Android Auto (compatible with smartphones from Android 5.0) - Apple CarPlay (compatible from iPhone 5) (Apps that meet the specifications of the respective system or have been certified can be displayed in picture and sound and can be operated via the touchscreen and/or voice recognition.)) | <ul style="list-style-type: none">• Paint finish: metallic• Parking assistant with front and rear parking aid• Rear view camera• Side windows from 2nd row and rear window dark tinted• Swiveling tow bar with electric release |
|--|---|

Brief expert findings

Documents submitted	At the time of the inspection, the registration certificate part 2 (letter) was available, but the registration certificate part 1 (certificate) was not available. (Copy)
VIN comparison	The vehicle identification number (VIN) was read and the undersigned verified that it matched the documents submitted during the inspection.
Inspection	The inspection conditions were sufficient for the assessment of the vehicle. Lifting equipment and a pit were available for examining the vehicle.
Test drive	No test drive/maneuvering was carried out during the inspection of the vehicle.
Engine function test	An engine test run was performed.

Value reducing factors

No.	Component group	Description
1	Boot lid / rear door	Trim - standard - lower - Scratched - Replace
2	Rear bumper	Rear bumper - Scratch(es) - Smart repair
3	Vehicle glazing	Windscreen - Stone chips - Replace
4	Mudguard - right side	Mudguard - right side - Dent / paintcoat damage - Repair and paint
5	Boot lid / rear door	Boot lid (unterhalb) - Scratched - Paint

Wear and tear

No.	Component group	Description
1	Door - front right side	Door - dent(s) - No deduction
2	Front bumper	Front bumper - Stone chips - No deduction

The vehicle shows signs of wear commensurate with its age and use.

Order/Scope of order

The order was placed to prepare a sales report for the vehicle described. This includes the following:

- Description of core relevant information about the vehicle
- Documentation of equipment features
(*Delivery by third-party service providers*)
- Documentation of damage, defects, missing parts
- Documentation of previous damage, unrepaired previous damage, repainting
- a brief visual or functional inspection of the equipment details if possible.
(*Functional tests of driver assistance systems are not included in the scope of services!*)
- a photo documentation of the vehicle



Basis for the order

This product is based on the Alphabet Fuhrpark GmbH guidelines for vehicle returns and valuations. The expert makes the explicit findings in each individual case objectively within the framework of the specified standards based on his or her own expertise.

The vehicle inspection takes place in a disassembled state.

Damage or defects that can only be detected during disassembly/diagnosis work or through advanced knowledge remain within the scope of the prognosis risk. An extended risk exists for concealed defects caused by fraudulent deception and not identifiable by the expert.

Damage or defects resulting from normal use or wear and tear of the vehicle will be accepted according to the applicable standard.

There was no explicit identification or monetary consideration of the expected features within the product.

Features which in their nature and severity slightly exceed normal use but do not constitute unacceptable damage will be documented and identified under signs of use if necessary.

Damage or defects which, according to the underlying standard, can no longer be attributed to normal use or wear and tear are listed in the product under "Depreciating Factors".

Depending on the product specification, a monetary ID can be provided. If this takes place, the costs can be 100% d or pro rata depending on the vehicle's age and mileage.

Previous damages

Apparently, no repaired previous damage could be found on the vehicle.



Figure 1: Diagonal front (left)



Figure 2: Diagonal front (right)



Figure 3: Diagonal rear (left)



Figure 4: Diagonal rear (right)



Figure 5: Interior - front



Figure 6: Interior - rear



Figure 7: Instrument cluster



Figure 8: Instrument panel



Figure 9: interior 360° view



Figure 10: Cargo area



Figure 11: VIN



Figure 12: Mounted tyres



Figure 13: Documents



Figure 14: Additional tyres



Figure 15: Navigation



Figure 16: Misc.

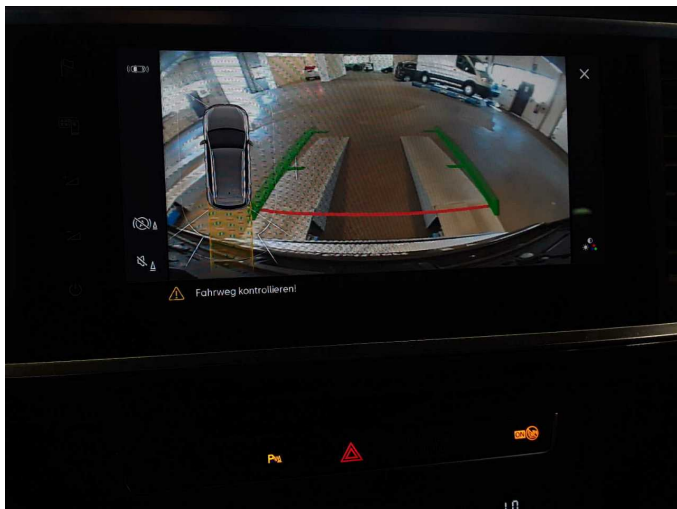


Figure 17: Misc.



Figure 18: Misc.



Figure 19: Misc.



Figure 20: Misc.



Figure 21: Misc.

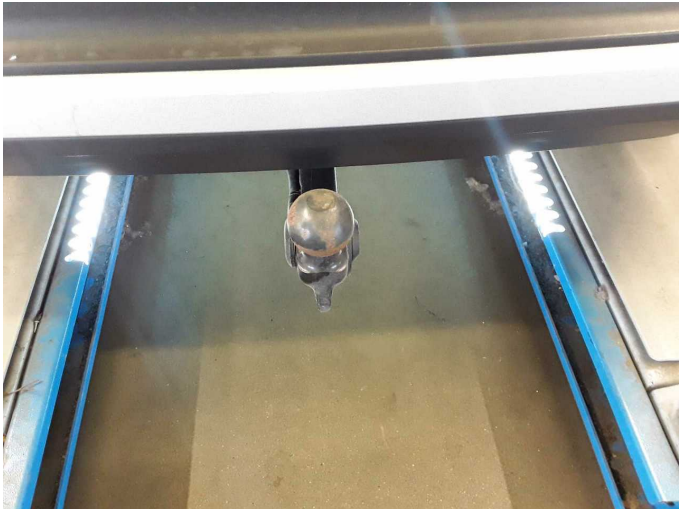


Figure 22: Misc.



Figure 23: Misc.



Damage 1: Boot lid / rear door: Trim - standard - lower - Scratched - Replace



Damage 1: Boot lid / rear door: Trim - standard - lower - Scratched - Replace



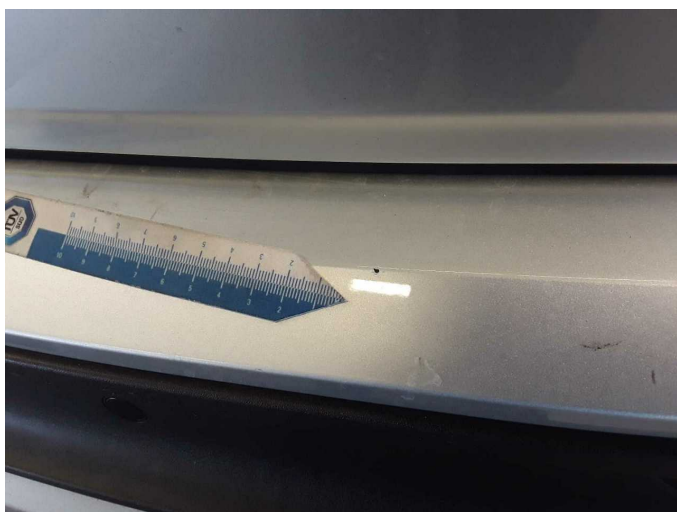
Damage 1: Boot lid / rear door: Trim - standard - lower - Scratched - Replace



Damage 2: Rear bumper: Rear bumper - Scratch(es) - Smart repair



Damage 2: Rear bumper: Rear bumper - Scratch(es) - Smart repair



Damage 2: Rear bumper: Rear bumper - Scratch(es) - Smart repair



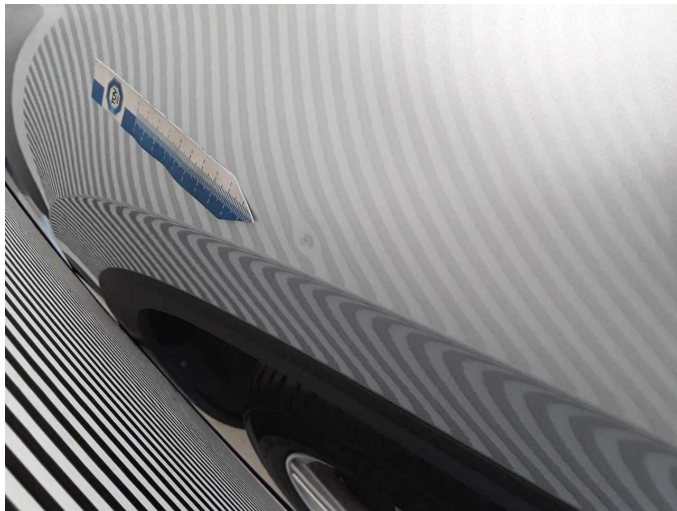
Damage 3: Vehicle glazing: Windscreen - Stone chips - Replace



Damage 3: Vehicle glazing: Windscreen - Stone chips - Replace



Damage 4: Mudguard - right side: Mudguard - right side - Dent / paintcoat damage - Repair and paint



Damage 4: Mudguard - right side: Mudguard - right side - Dent / paintcoat damage - Repair and paint



Damage 5: Boot lid / rear door: Boot lid (unterhalb) - Scratched - Paint



Damage 5: Boot lid / rear door: Boot lid (unterhalb) - Scratched - Paint



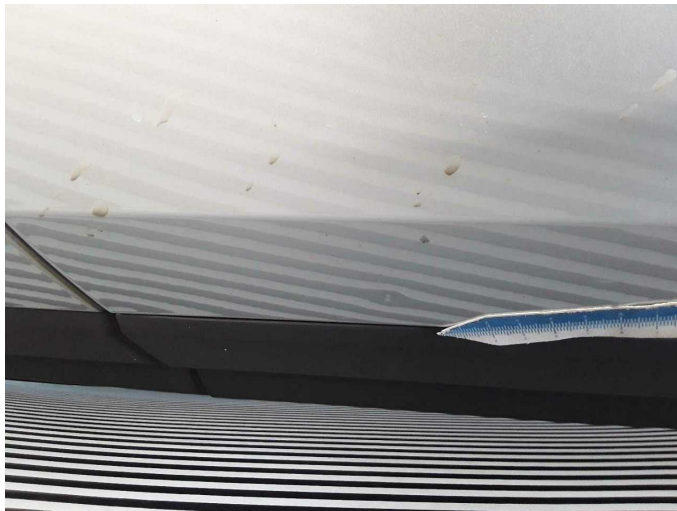
Damage 5: Boot lid / rear door: Boot lid (unterhalb) - Scratched - Paint



Damage 5: Boot lid / rear door: Boot lid (unterhalb) - Scratched - Paint



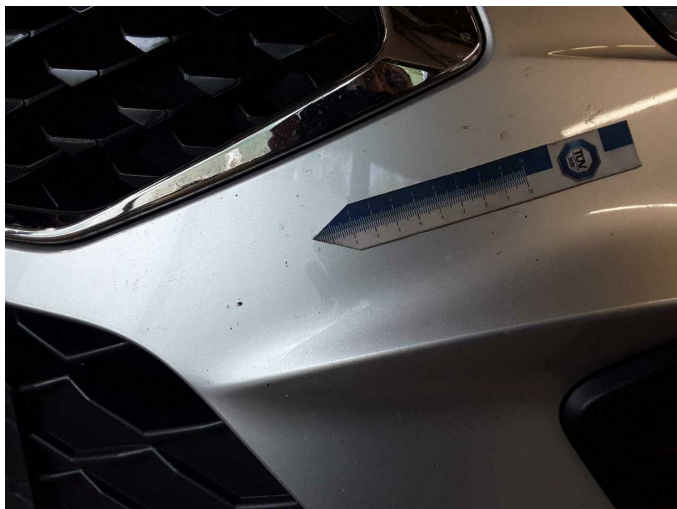
Wear and tear 1: Door - front right side: Door - dent(s) - No deduction



Wear and tear 1: Door - front right side: Door - dent(s) - No deduction



Wear and tear 2: Front bumper: Front bumper - Stone chips - No deduction



Wear and tear 2: Front bumper: Front bumper - Stone chips - No deduction