



SEAT Ateca

Ateca 2.0 TDI DSG

VIN NO VSSZZZ5FZM6543039

Registration Number FZM6543039



MOT Date

2026-03-01

Last Service

2025-03-07

Number of Owners

1

Last Service Mileage

151323

Number of Keys

2

First Registration Date

2021-03-29

Odometer Reading

163150 km

Country First Registered

Germany

Inspection Report Summary

| | | | |
|-------------------------|---------------------------------------|----------------|-----------------|
| Customer | BCA Online | Report Number | P20250819083735 |
| Inspection Date / Place | 2025-08-19 / ARS Altmann AG Riedstadt | Cosmetic Grade | 1 |

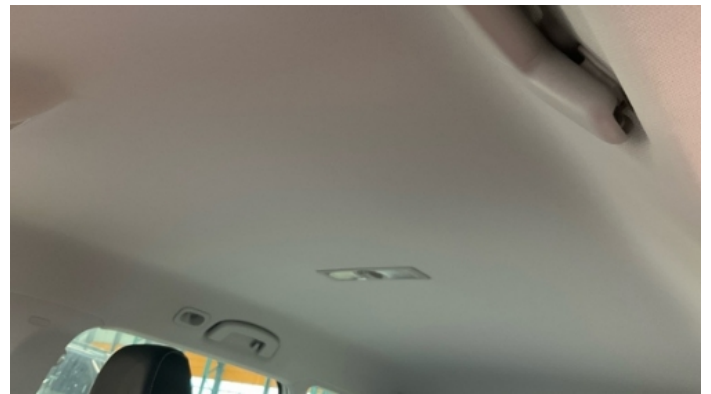
Vehicle Summary

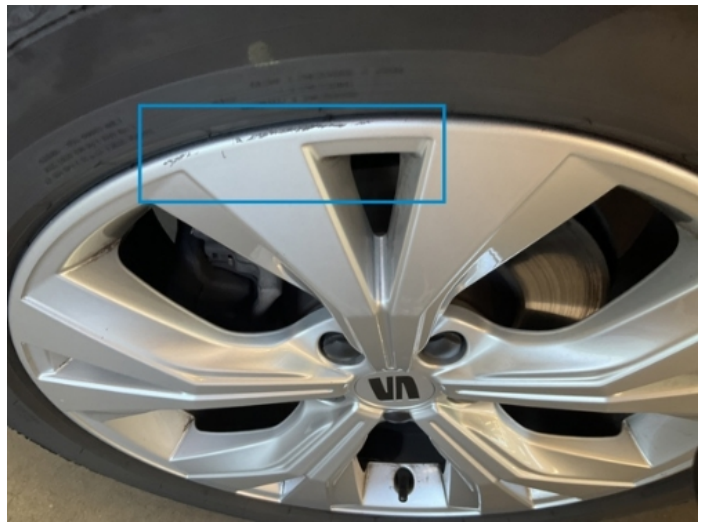
| | | | |
|--------------------|-----------|--------------------|-------------------------|
| Vehicle Condition | Runner | VAT Type | Qualifying |
| Fuel Type | Diesel | Road Worthy | Yes |
| Colour | White | Engine Size (cc) | 1968 |
| Engine Size | 2.0 | No of Doors | 5 |
| Body Type | SUV | Drive Train | Front |
| Seat Colour | | No of Seats | 5 |
| Seat Covering Name | schwarz | Seat Covering | Cloth/Synthetic Leather |
| Charging Cables | | WLTP CO2 Emissions | |
| Gearbox Type | Automatic | | |

Vehicle History & Documents

| | | | |
|------------------------|---------|----------------------|----|
| Service Book Available | Present | Next Service Mileage | km |
| Previous Usage | | Imported | No |
| Manufacturer Warranty | | | |







Equipment

| | | | |
|----------------------------------|-----------------------------------|------------------------|--------------------------|
| Traffic sign recognition | USB Socket | Alloys wheels | Anti-lock braking |
| Cabin Pre Heating | Diesel particulate filter | Digital dashboard | Headlamp wash/wipe |
| High beam assist | Remote central locking | Roof rails | Split folding rear seats |
| Distance warning system | Electric tailgate | Leather steering wheel | Radio |
| Rear parking sensors | Trip Computer | Airbag Status | Ambient lighting |
| Bluetooth telephone interface | Cruise control | Digital Radio | Front fog lamps |
| Heated wing mirrors | Remote adjusting wing mirrors | Reversing Camera | Satellite navigation |
| Stability control | Electrically folding wing mirrors | Lane assist | LED Headlamps |
| Rain sensitive windscreen wipers | | | |

Equipment Details

| | | | |
|------------------------|---------------------------|------------------|-------|
| Air Conditioning | Dual Zone Climate Control | Alloy Wheel Size | 18 |
| Extra Wheel / Tyre Set | Winter Tyres - Alloy | Seat Heating | Front |

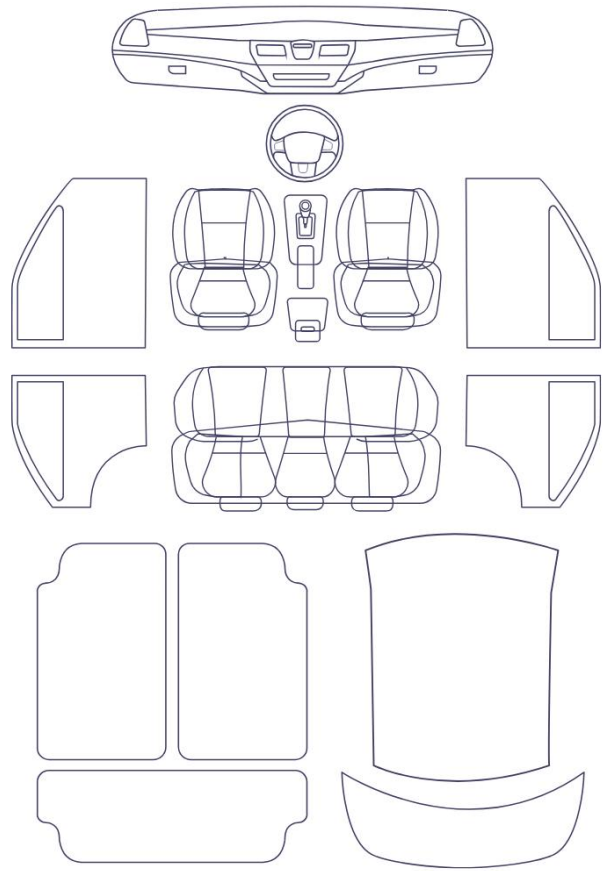
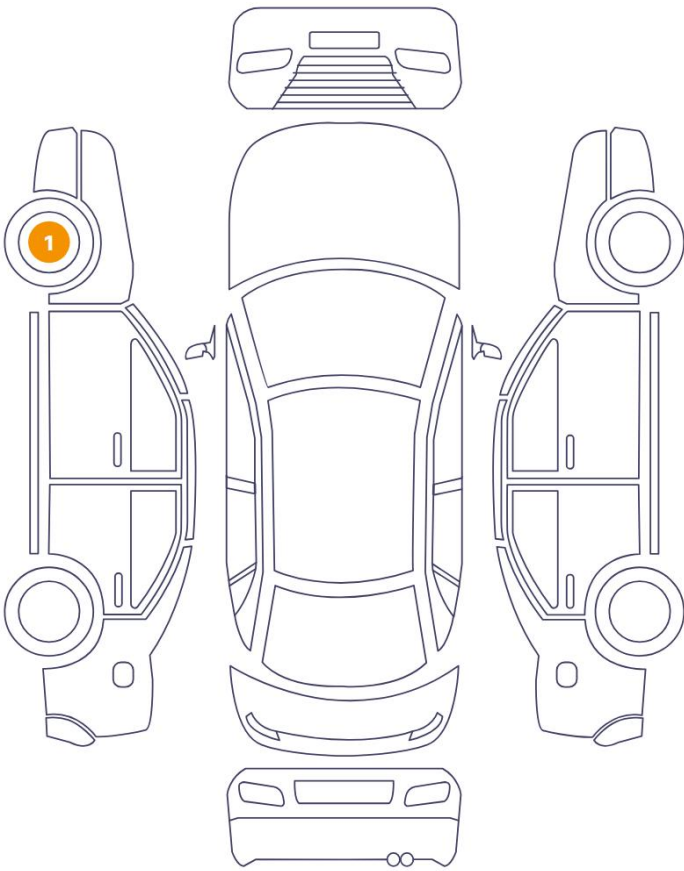
Wheels & Tyres

| | | | |
|----------------------------|---|----------------------------|---|
| Right Front Tyre Depth | 3 | Left Front Tyre Depth | 3 |
| Right Rear Tyre Depth | 3 | Left Rear Tyre Depth | 3 |
| Extra Wheel - 1 Tyre Depth | 5 | Extra Wheel - 2 Tyre Depth | 5 |
| Extra Wheel - 3 Tyre Depth | 5 | Extra Wheel - 4 Tyre Depth | 5 |

Cosmetic Damage

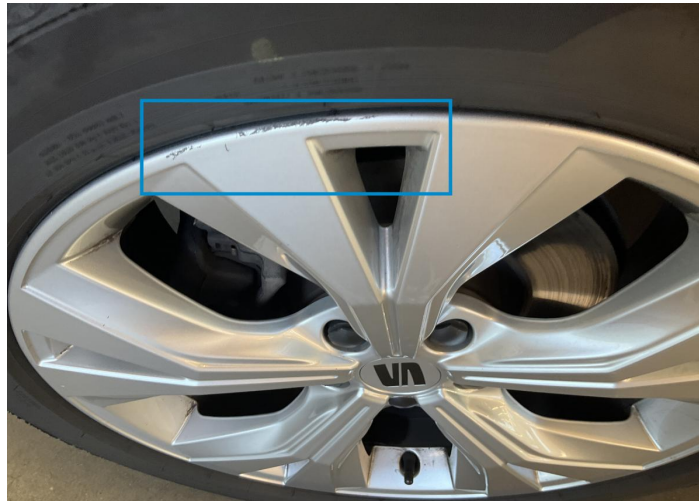
1 Schäden

0 Schäden



| Component | Damage | Comments |
|-----------|--------|----------|
|-----------|--------|----------|

| | | |
|--------------------|---------------------------|--|
| 1 Rim / Front Left | Out of Bodywork / Scratch | |
|--------------------|---------------------------|--|



1. Rim / Front Left
Out of Bodywork / Scratch -

Mechanical Condition

Control Lights

| | | | |
|---------------------------------|---|--|---|
| Display Defect | ✓ | Service Light | ✓ |
| ABS Warning Light | ✓ | ESP Fault/Traction Control Malfunction Light | ✓ |
| Diesel Particulate Filter Light | ✓ | Airbag Warning Light | ✓ |
| Oil Pressure Warning Light | ✓ | Brake Warning Light | ✓ |
| Power Steering Warning Light | ✓ | Alternator / Battery | ✓ |
| No Dashboard Lights | ✓ | Tire Pressure Monitoring System | ✓ |

Equipments Test

| | | | |
|---------------------|---|---------------------------------------|---|
| Other Equipments | ✓ | Main & Spare Keys Functioning | ✓ |
| Electric Windows | ✓ | Navigation System | ✓ |
| Audio Equipment | ✓ | Parking Sensors / Cameras Functioning | ✓ |
| AC / Heating System | ✓ | | |

Engine

| | | | |
|---------------------|---|---------------------|---|
| Engine Starts | ✓ | Engine Status / EML | ✓ |
| Engine Leak Visible | ✓ | | |

Gearbox

| | |
|----------|---|
| Gear Box | ✓ |
|----------|---|

Levels


| | | | |
|--------------|---|---------------|---|
| Brakes Fluid | ✓ | Coolant Fluid | ✓ |
|--------------|---|---------------|---|

Test Drive Inspection

Steering Wheel


Steering | Noise / Anomaly 

Engine


Engine Noise  The Gears Scratch / Skip / Abnormal Operation 

Fume Quantity  Power Loss 

Brake

Brake System Anomaly 

General

Test Driven Status 

 *No troubles detected, good condition or correct tests, according to vehicle age and mileage*

 *Damages or malfunction detected that requires repairs by the buyer*

 *Not applicable*

 *Not tested*

Disclaimer

Please also note the "UserGuide condition report", which shows the scope of the vehicle description.

[User Guide](#)