



SEAT Ateca
Ateca 2.0 TDI DSG

VIN NO VSSZZZ5FZM6543039
Registration Number FZM6543039



MOT Date	Number of Owners	Number of Keys	Odometer Reading
2026-03-01	1	2	163150 km
Last Service	Last Service Mileage	First Registration Date	Country First Registered
2025-03-07	151323	2021-03-29	Germany

Inspection Report Summary

Customer	BCA Online	Report Number	P20250819083735
Inspection Date / Place	2025-08-19 / ARS Altmann AG Riedstadt	Cosmetic Grade	1

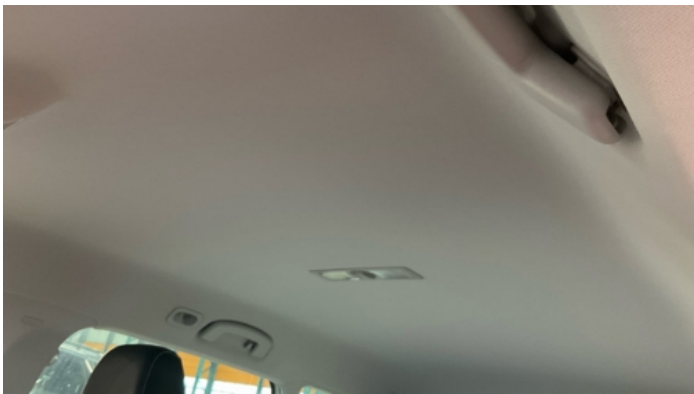
Vehicle Summary

Vehicle Condition	Runner	VAT Type	Qualifying
Fuel Type	Diesel	Road Worthy	Yes
Colour	White	Engine Size (cc)	1968
Engine Size	2.0	No of Doors	5
Body Type	SUV	Drive Train	Front
Seat Colour		No of Seats	5
Seat Covering Name	schwarz	Seat Covering	Cloth/Synthetic Leather
Charging Cables		WLTP CO2 Emissions	
Gearbox Type	Automatic		

Vehicle History & Documents

Service Book Available	Present	Next Service Mileage	km
Previous Usage		Imported	No
Manufacturer Warrenty			







Equipment

Traffic sign recognition	USB Socket	Alloys wheels	Anti-lock braking
Cabin Pre Heating	Diesel particulate filter	Digital dashboard	Headlamp wash/wipe
High beam assist	Remote central locking	Roof rails	Split folding rear seats
Distance warning system	Electric tailgate	Leather steering wheel	Radio
Rear parking sensors	Trip Computer	Airbag Status	Ambient lighting
Bluetooth telephone interface	Cruise control	Digital Radio	Front fog lamps
Heated wing mirrors	Remote adjusting wing mirrors	Reversing Camera	Satellite navigation
Stability control	Electrically folding wing mirrors	Lane assist	LED Headlamps
Rain sensitive windscreen wipers			

Equipment Details

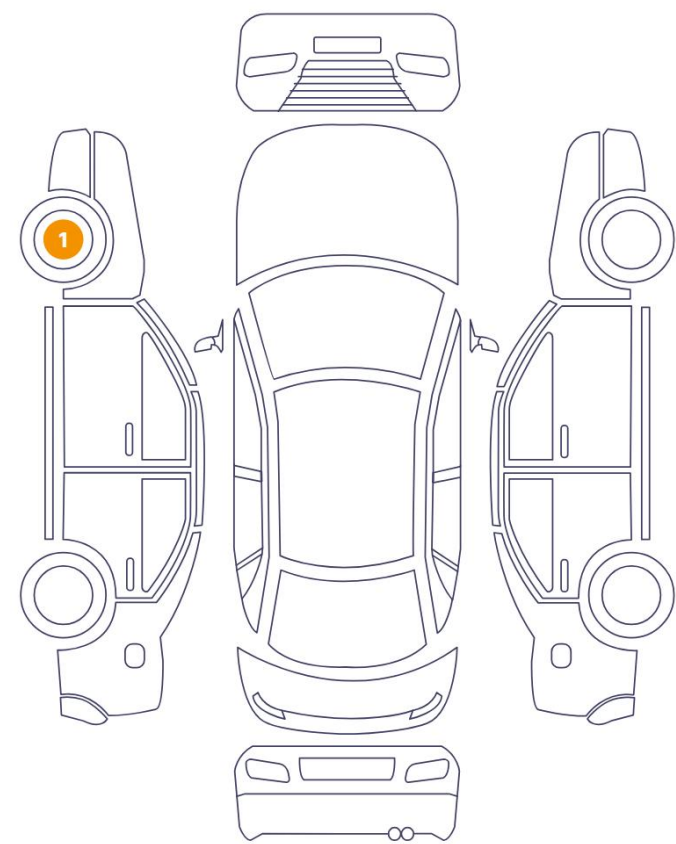
Air Conditioning	Dual Zone Climate Control	Alloy Wheel Size	18
Extra Wheel / Tyre Set	Winter Tyres - Alloy	Seat Heating	Front

Wheels & Tyres

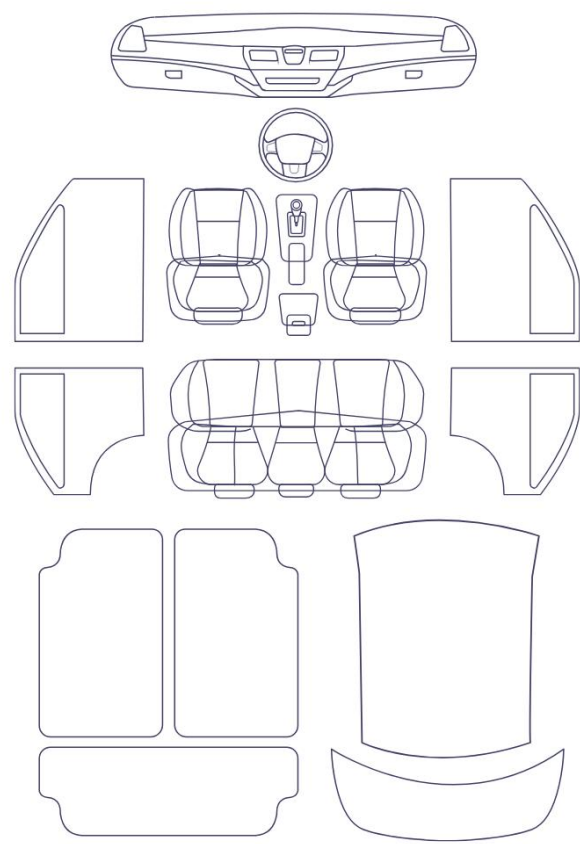
Right Front Tyre Depth	3	Left Front Tyre Depth	3
Right Rear Tyre Depth	3	Left Rear Tyre Depth	3
Extra Wheel - 1 Tyre Depth	5	Extra Wheel - 2 Tyre Depth	5
Extra Wheel - 3 Tyre Depth	5	Extra Wheel - 4 Tyre Depth	5

Cosmetic Damage

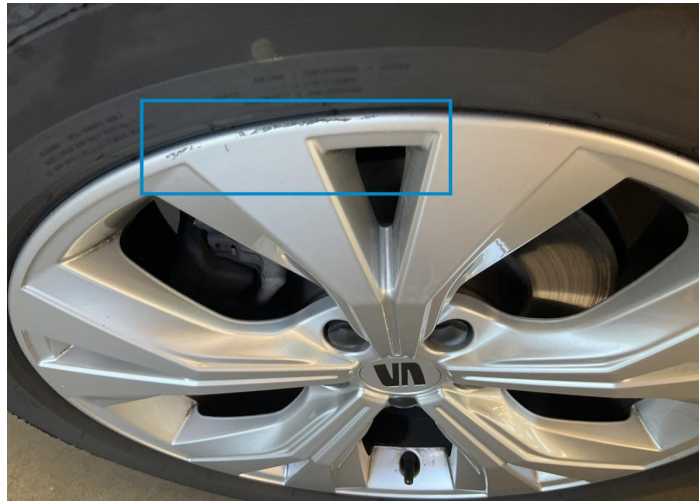
1 Schäden



0 Schäden



Component		Damage	Comments
1	Rim / Front Left	Out of Bodywork / Scratch	



1. Rim / Front Left
Out of Bodywork / Scratch -

Mechanical Condition

Control Lights

Display Defect	✓	Service Light	✓
ABS Warning Light	✓	ESP Fault/Traction Control Malfunction Light	✓
Diesel Particulate Filter Light	✓	Airbag Warning Light	✓
Oil Pressure Warning Light	✓	Brake Warning Light	✓
Power Steering Warning Light	✓	Alternator / Battery	✓
No Dashboard Lights	✓	Tire Pressure Monitoring System	✓

Equipments Test

Other Equipments	✓	Main & Spare Keys Functioning	✓
Electric Windows	✓	Navigation System	✓
Audio Equipment	✓	Parking Sensors / Cameras Functioning	✓
AC / Heating System	✓		

Engine

Engine Starts	✓	Engine Status / EML	✓
Engine Leak Visible	✓		

Gearbox

Gear Box	✓
----------	---

Levels

Brakes Fluid	✓	Coolant Fluid	✓
--------------	---	---------------	---

Test Drive Inspection

Steering Wheel

Steering | Noise / Anomaly

Engine

Engine Noise The Gears Scratch / Skip / Abnormal Operation

Fume Quantity Power Loss

Brake

Brake System Anomaly

General

Test Driven Status

- No troubles detected, good condition or correct tests, according to vehicle age and mileage
- Damages or malfunction detected that requires repairs by the buyer
- Not applicable
- Not tested

Disclaimer

Please also note the "UserGuide condition report", which shows the scope of the vehicle description. [User Guide](#)