



Expertise

Protocol number: 41277202
Order No. / Reference: 25134574
Inspection date: 27 Aug 2025

Manufacturer: Seat

Model: Ateca 2.0 TDI DSG Style

VIN: VSSZZZ5FZM6519238



Vehicle details	
Manufacturer / Type / Model / Equipment	
Seat Ateca 2.0 TDI DSG Style	
Vehicle Identification number	VSSZZZ5FZM6519238
Mileage (Read)	69,199 km
First registration	9 Feb 2021
Number of holders	1
Next periodical technical inspection	05/2026
(Report not on hand)	
Power / Engine displacement	110 kw / 1,968 ccm
Fuel type / Cylinder	Diesel / 4
Gearbox / Number of gears	Automatic / 7
Type of drive	Front drive
Type of vehicle	SUV
Colour / colour code	Energy blau (V5F)
Doors / Seats	5 / 5
Upholstery type	Cloth
Colour of upholstery	Grey-Black
Re/Import	no
Driving readiness	Roadworthy



Vehicle details

Maintenance booklet / proof	digital proof / complete	Next maintenance in	14,000 km
Last maintenance on / at	03/2025 at 53,122 km		
Key is / should be	2 / 2	FZG documents	ZB#2 (B) was available (copy), ZB#1 (S) was not available
		Letter No.	FK545278
Previous damage / Accident	Detectable	Repainting	None detectable
Inspection conditions	sufficient	Lifting equipment / pit	yes
Test drive	Not performed	Engine function test	Performed
Driving readiness	Roadworthy		
Manufacturer key number/ type code number	7593 / AMQ 00043		
Emission standard	EURO6;WLTP;DG;PI/CI; M, N1 I	Fine dust sticker	
Permitted total weight	2,030 kg	Empty weight	

Tyres

Mounted tyres

#	Tyre size	Type of tyre	Manufacturer	Tread depth
1)	215/55 R17 94V	Summer tyres on Light alloy	Michelin	6mm / 6mm
2)	215/55 R17 94V	Summer tyres on Light alloy	Michelin	6mm / 6mm

Additional tyres

#	Tyre size	Type of tyre	Manufacturer	Tread depth
1)	215/55 R17 98V	Winter tyres on Light alloy	Pirelli	4mm / 4mm
2)	215/55 R17 98H	Winter tyres on Light alloy	Goodyear	7mm / 7mm

Replacement

Typ	Tyre size	Type of tyre	Manufacturer	Tread depth
N	125/70 R18 99M	Summer tyres on Steel	Sonstige	4 mm

Legend: Tread depth information for tires on the left is in the first place, for tires on the right is in the second place on the axle in the direction of travel

Equipment

Standard equipment

- 12 V socket at the front
- Storage compartment in the middle area of the lower dashboard
- Storage pocket on the back of the front seats
- Exterior mirrors electrically adjustable, folding and heated
- Outside temperature display
- On-board computer
- diesel particulate filter
- tachometer
- Third brake light, integrated in the tailgate
- Rear parking aid
- Electronic Stabilization Control (ESC)
- Footwell lighting
- Luggage compartment cover
- Transmission: 7-speed DSG automatic transmission
- Rear lights in LED technology
- ISOFIX child seat securing system
- Headrests, 2 front, 3 rear
- Black radiator grille with chrome strip
- Steering wheel: Multifunction steering wheel in leather
- Armrest - centre, rear
- Multifunctional display with multi-color display
- Fatigue detection
- Emergency call service
- Radio: Digital radio reception DAB+
- Tire Pressure Monitoring System (TPMS)
- Wheels: Tyre fit
- SEAT CONNECT
- Seats: Driver's seat with height adjustment
- Start-stop technology
- Daytime running lights in LED technology
- Lashing eyes in the luggage compartment
- Full-LED headlights
- Thermal insulation glazing
- Sunglasses storage compartment on the driver's side
- Storage compartment in the front doors
- Storage compartment under the driver's seat
- Airbags
- Exterior mirror housings in body color
- Hill Start Assist (HHC)
- Chrome applications in the interior
- Electronic differential lock (XDS)
- Three-point automatic seat belts, front and rear, with belt pretensioners
- Electronic parking brake including auto-hold function
- Electric windows front and rear
- Gear recommendation display
- Cruise control system (GRA)
- Illuminated glove compartment
- Rear window wiper and rear window heater
- Climatronic air conditioning with electronic temperature control
- Paint finish: Uni
- Reading lights, 2 front and 2 rear
- Center console with integrated storage compartment, center armrest cup holder and rear air vents
- Fog lights with cornering light function in LED technology
- Upholstery: Cloth
- Radio: Media System Plus Style, Xperience, FR
- Wheels: 4 light alloy wheels "Dynamic"
- Rear seat backrest asymmetrically split and foldable
- Power steering, electromechanical
- Seats: Lumbar support for driver and front passenger with height adjustment for front passenger seat
- "Front Assist" environment monitoring system with City Emergency Braking function
- Electronic immobilizer
- Central locking, including tailgate, with radio remote control

Extra equipment

- Package: INFOTAIN Business Package (Navigation system - BeatsAudio sound system - Full Link: MirrorLink, Android Auto, Apple CarPlay - DAB+ digital radio reception - Wireless charger in the center console storage compartment - Spare tire as emergency spare wheel)
- Package: Winter (consisting of: - Headlight cleaning system - Heated windshield washer nozzles - Heated front seats)
- Package: Driver Assistance Package II PDS
- Light and Vision Package (Automatic Coming Home and Leaving Home function - Automatic dimming interior mirror - Light sensor with automatic headlight switching - Rain sensor)
- Rear view camera
- Seats: Remote release for folding the rear seat backrest in the trunk



Brief expert findings

Documents submitted	At the time of the inspection, the registration certificate Part 2 (letter) was available, but the registration certificate Part 1 (certificate) was not. (Copy)
VIN comparison	The vehicle identification number (VIN) was read from the vehicle and its conformity with the submitted documents was verified during the inspection by the undersigned.
Inspection	The inspection conditions were sufficient for the assessment of the vehicle. Lifting equipment and a pit were available for examining the vehicle.
Test drive	No test drive/maneuvering was carried out during the inspection of the vehicle.
Engine function test	An engine test run was performed.
Driving readiness	The vehicle was drivable at the time of inspection.

Value reducing factors

No.	Component group	Description
1	Wing mirror - right side	Cap - Scratch(es) - Smart repair
2	Door - front left side	Door edge - Scratch(es) - Smart repair
3	Sill - right side	Sill - Dent / paintcoat damage - Smart repair
4	Mudguard - right side	Mudguard - right side - Scratch(es) - Paint
5	Rear bumper	Rear bumper - Scratch(es) - Paint
6	Front bumper	Front bumper - Scratch(es) - Paint
7	Side panel - rear left side	Side panel - Scratch(es) - Paint
8	Side panel - rear right side	Side panel - Scratch(es) - Paint
9	Door - rear right side	Door - Scratch(es) - Paint
10	Door - rear left side	Door - Scratch(es) - Paint

Wear and tear

No.	Component group	Description
1	Body	Body (Waschstraßenkratzer) - Scratch(es) - No deduction
2	2nd wheel set	2 tyres (4mm) - Does not meet the leasing specifications - No deduction

The vehicle shows signs of wear commensurate with its age and use.

Previous damages

No.	Previous damage	Extent of damage (Net)
1	Rear, Provided by user / customer	970,62 €

Order/Scope of order

The order was placed to prepare a sales report for the vehicle described. This includes the following:

- Description of core relevant information about the vehicle
- Documentation of equipment features
(Delivery by third-party service providers)
- Documentation of damage, defects, missing parts
- Documentation of previous damage, unrepaired previous damage, repainting
- a brief visual or functional inspection of the equipment details if possible.
(Functional tests of driver assistance systems are not included in the scope of services!)
- a photo documentation of the vehicle



Basis for the order

This product is based on the Alphabet Fuhrpark GmbH guidelines for vehicle returns and valuations. The expert makes the explicit findings in each individual case objectively within the framework of the specified standards based on his or her own expertise.

The vehicle inspection takes place in a disassembled state.

Damage or defects that can only be detected during disassembly/diagnosis work or through advanced knowledge remain within the scope of the prognosis risk. An extended risk exists for concealed defects caused by fraudulent deception and not identifiable by the expert.

Damage or defects resulting from normal use or wear and tear of the vehicle will be accepted according to the applicable standard.

There was no explicit identification or monetary consideration of the expected features within the product.

Features which in their nature and severity slightly exceed normal use but do not constitute unacceptable damage will be documented and identified under signs of use if necessary.

Damage or defects which, according to the underlying standard, can no longer be attributed to normal use or wear and tear are listed in the product under "Depreciating Factors".

Depending on the product specification, a monetary ID can be provided. If this takes place, the costs can be 100% d or pro rata depending on the vehicle's age and mileage.

Previous damages

According to available information previous damages were repaired at the vehicle. Traces of repairs, which allow conclusions about the area of repair, were not recognizable during the inspection.

Comments

- Wartungshistorie gemäß Auftraggeber Informationen.
- Winterradsatz ist kein Bestandteil des Auslieferungsumfangs.



Figure 1: Diagonal front (left)



Figure 2: Diagonal front (right)



Figure 3: Diagonal rear (left)



Figure 4: Diagonal rear (right)



Figure 5: Interior - front



Figure 6: Interior - rear



Figure 7: Instrument cluster



Figure 8: Instrument panel



Figure 9: interior 360° view



Figure 10: Cargo area



Figure 11: VIN



Figure 12: Mounted tyres

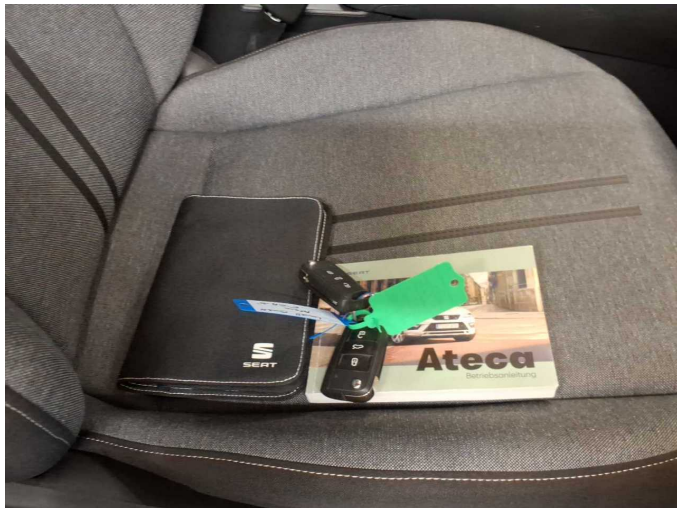


Figure 13: Documents



Figure 14: Additional tyres



Figure 15: Navigation



Figure 16: Misc.



Figure 17: Misc.



Figure 18: Misc.



Figure 19: Misc.



Figure 20: Misc.

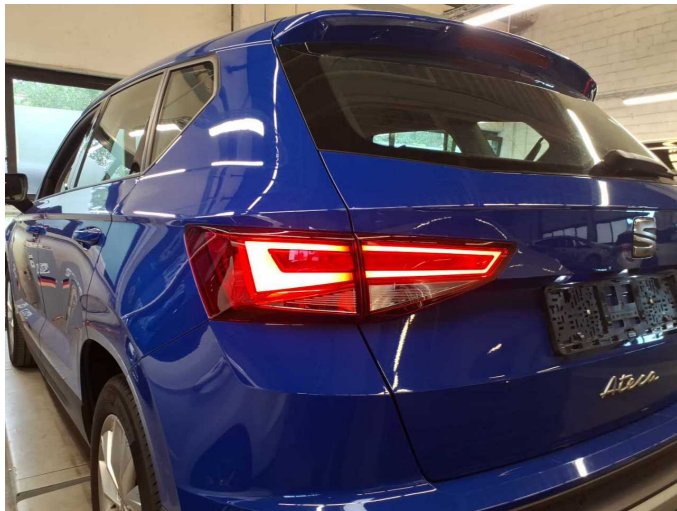


Figure 21: Misc.

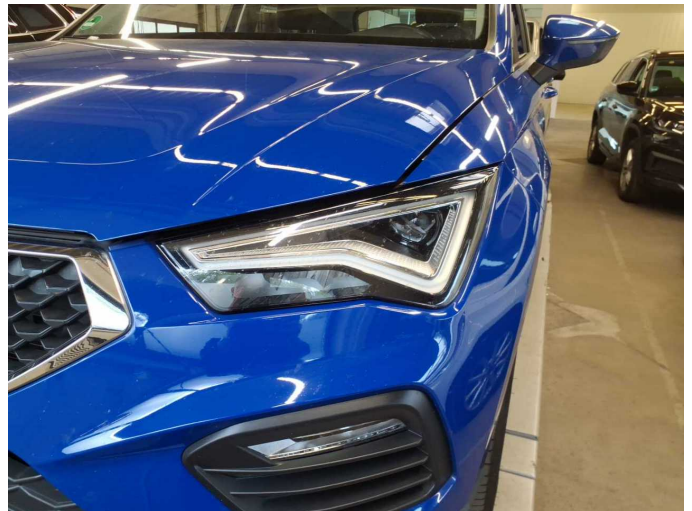


Figure 22: Misc.



Figure 23: Misc.



Figure 24: Misc.



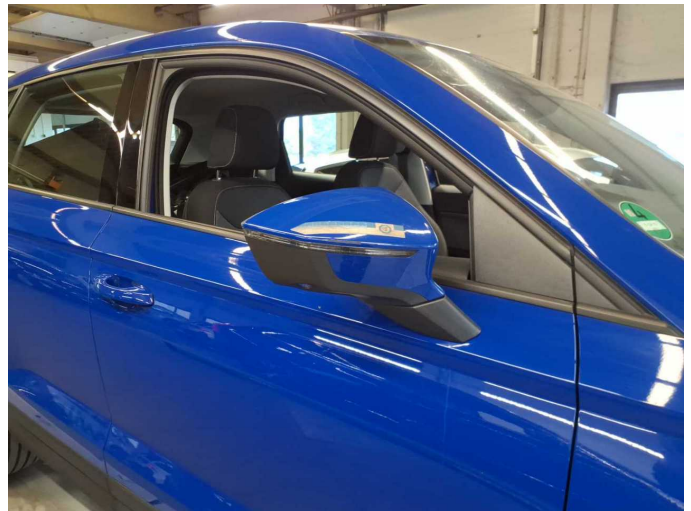
Figure 25: Misc.



Figure 26: Misc.



Figure 27: Misc.



Damage 1: Wing mirror - right side: Cap - Scratch(es) - Smart repair



Damage 1: Wing mirror - right side: Cap - Scratch(es) - Smart repair



Damage 2: Door - front left side: Door edge - Scratch(es) - Smart repair



Damage 2: Door - front left side: Door edge - Scratch(es) - Smart repair



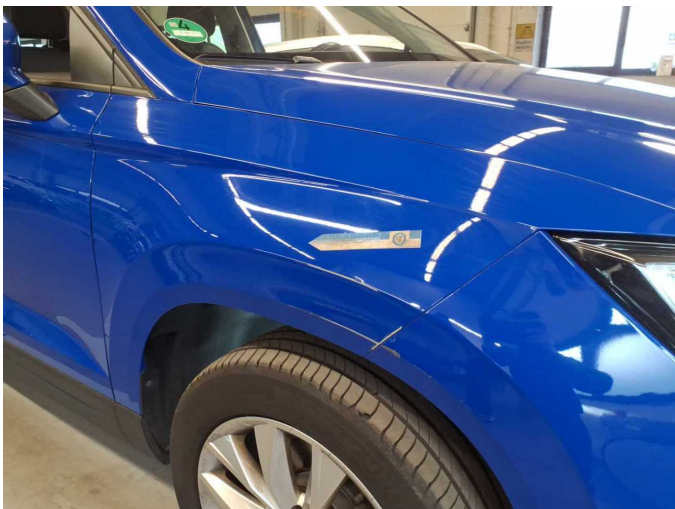
Damage 3: Sill - right side: Sill - Dent / paintcoat damage - Smart repair



Damage 3: Sill - right side: Sill - Dent / paintcoat damage - Smart repair



Damage 3: Sill - right side: Sill - Dent / paintcoat damage - Smart repair



Damage 4: Mudguard - right side: Mudguard - right side - Scratch(es) - Paint



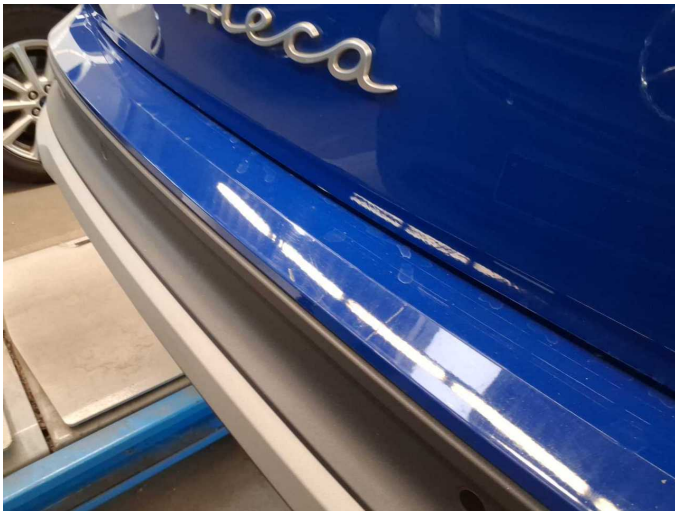
Damage 4: Mudguard - right side: Mudguard - right side - Scratch(es) - Paint



Damage 5: Rear bumper: Rear bumper - Scratch(es) - Paint



Damage 5: Rear bumper: Rear bumper - Scratch(es) - Paint



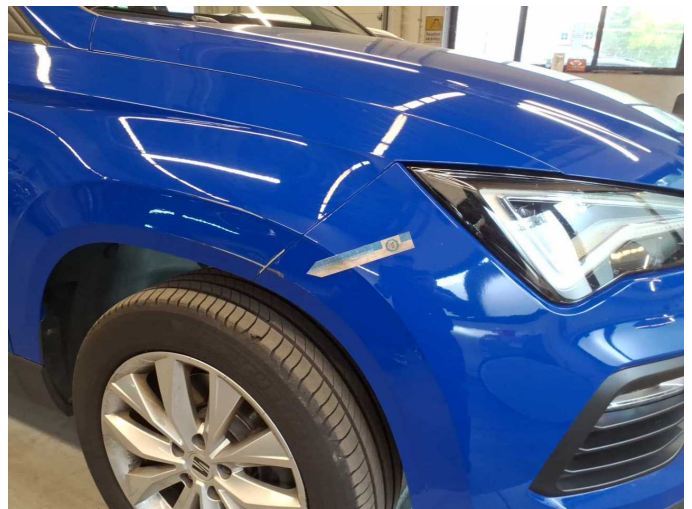
Damage 5: Rear bumper: Rear bumper - Scratch(es) - Paint



Damage 5: Rear bumper: Rear bumper - Scratch(es) - Paint



Damage 5: Rear bumper: Rear bumper - Scratch(es) - Paint



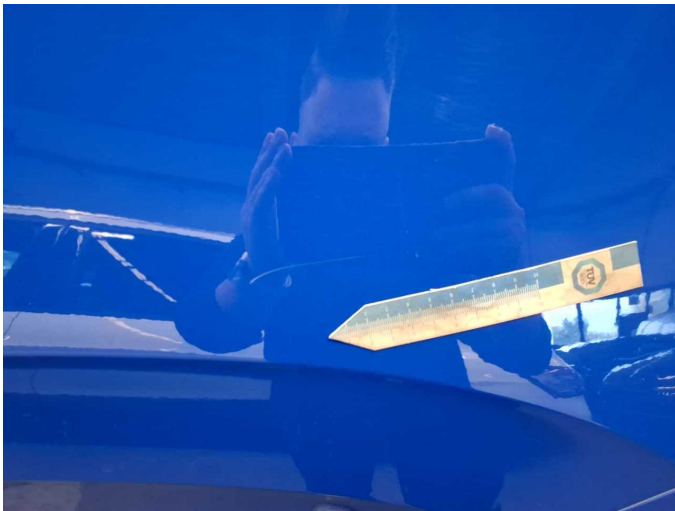
Damage 6: Front bumper: Front bumper - Scratch(es) - Paint



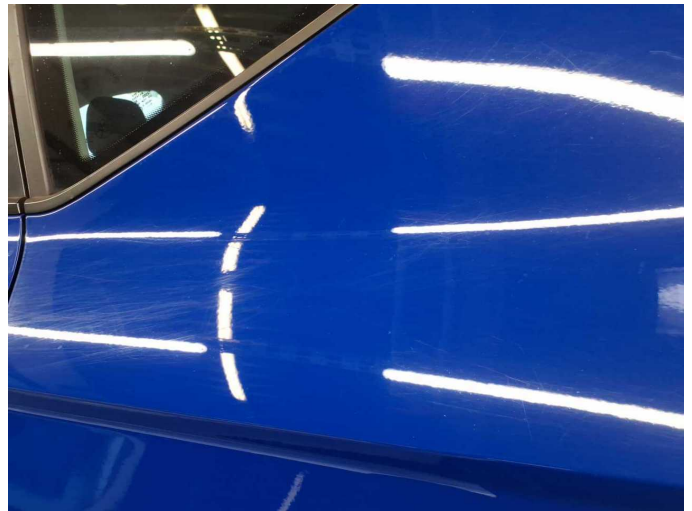
Damage 6: Front bumper: Front bumper - Scratch(es) - Paint



Damage 7: Side panel - rear left side: Side panel - Scratch(es) - Paint



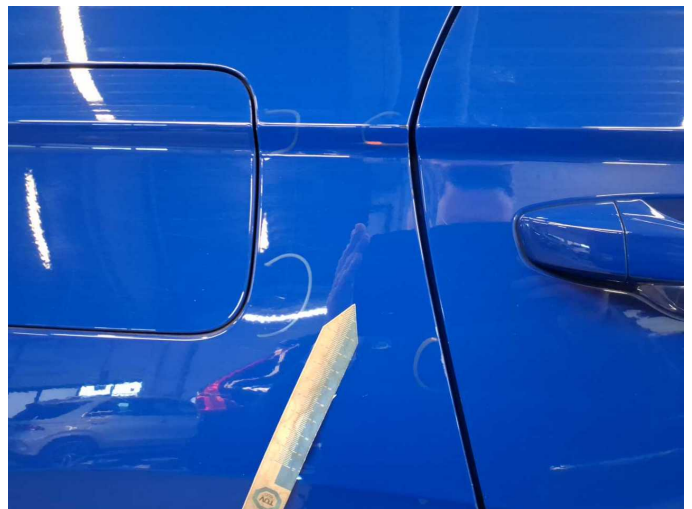
Damage 7: Side panel - rear left side: Side panel - Scratch(es) - Paint



Damage 7: Side panel - rear left side: Side panel - Scratch(es) - Paint



Damage 8: Side panel - rear right side: Side panel - Scratch(es) - Paint



Damage 8: Side panel - rear right side: Side panel - Scratch(es) - Paint



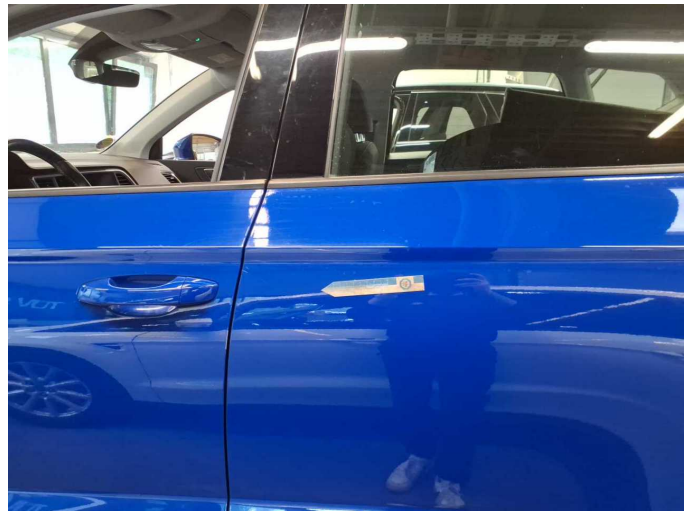
Damage 9: Door - rear right side: Door - Scratch(es) - Paint



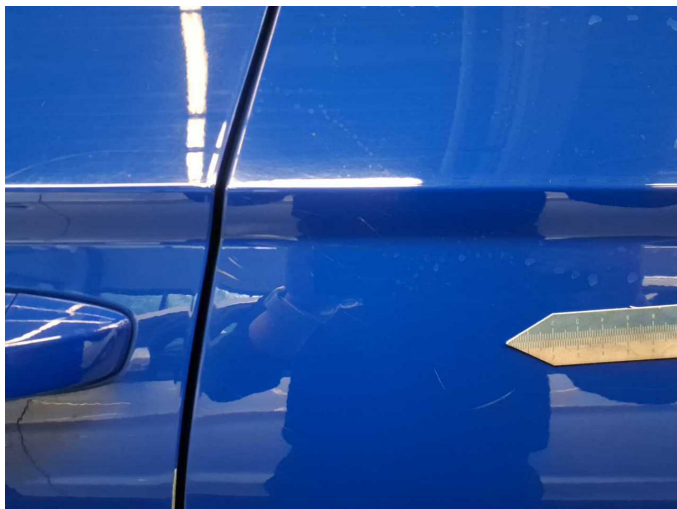
Damage 9: Door - rear right side: Door - Scratch(es) - Paint



Damage 9: Door - rear right side: Door - Scratch(es) - Paint



Damage 10: Door - rear left side: Door - Scratch(es) - Paint



Damage 10: Door - rear left side: Door - Scratch(es) - Paint



Damage 10: Door - rear left side: Door - Scratch(es) - Paint



Wartungshistorie

(gemäß Auftraggeber Informationen)

Fahrgestellnummer: VSSZZZ5FZM6519238
Hersteller / Modell: SEAT SEAT Ateca 2.0 TDI DSG Style

Datum	KM-Stand	Beschreibung
15.04.2025	57.084	Bremse Sonstiges; Bremsklötze hinten; Bremsklötze vorne; Bremsscheiben + Klötze h; Bremsscheiben + Klötze v; Bremsscheiben hinten; Bremsscheiben vorne
12.03.2025	53.122	Bremsflüssigkeit; Bremsflüssigkeit ern; Motoröl b. Wartung; Ölfilter ern; Regelwartungsdienst; Wartung Sonstiges
06.05.2024	32.726	Bremse Sonstiges; HU + AU; Regelwartungsdienst
09.05.2023	22.790	Bremsflüssigkeit; Bremsflüssigkeit ern; Motoröl b. Wartung; Ölfilter ern; Regelwartungsdienst; Wartung Sonstiges