



Expertise

Protocol number: 41346955
Order No. / Reference: 25019366
Inspection date: 1 Sept 2025

Manufacturer: Seat

Model: Leon 1.6 TDI Start&Stop Style

VIN: VSSZZZ5FZLR065940



Vehicle details	
Manufacturer / Type / Model / Equipment	
Seat Leon 1.6 TDI Start&Stop Style	
Vehicle Identification number	VSSZZZ5FZLR065940
Mileage (Read)	38,390 km
First registration	4 May 2020
Number of holders	1
Next periodical technical inspection	05/2025
(Report on hand)	
Power / Engine displacement	85 kw / 1,598 ccm
Fuel type / Cylinder	Diesel / 4
Gearbox / Number of gears	Manual / 5
Type of drive	Front drive
Type of vehicle	Saloon car
Colour / colour code	Midnight Schwarz Metallic
Doors / Seats	5 / 5
Upholstery type	Cloth
Colour of upholstery	Grey-Black
Vehicle with smoke odor	no



Vehicle details

Maintenance booklet / proof	digital proof / complete	Next maintenance in	21,600 km
Last maintenance on / at	04/2025 at 34,555 km		
Key is / should be	2 / 2	FZG documents	ZB#2 (B) was available (copy), ZB#1 (S) was not available
		Letter No.	FR310241
Previous damage / Accident	None detectable	Repainting	None detectable
Inspection conditions	sufficient	Lifting equipment / pit	yes
Test drive	Not performed	Engine function test	Performed
Manufacturer key number/ type code number	7593 / AMZ 00707		
Emission standard	EURO6;WLTP;DG;PI/CI; M, N1 I	Fine dust sticker	
Permitted total weight	1,870 kg	Empty weight	

Tyres

Mounted tyres

#	Tyre size	Type of tyre	Manufacturer	Tread depth
1)	205/55 R16 91V	Summer tyres on Light alloy	Continental	7mm / 7mm
2)	205/55 R16 91V	Summer tyres on Light alloy	Continental	4mm / 4mm

Additional tyres

#	Tyre size	Type of tyre	Manufacturer	Tread depth
1)	195/65 R15 91H	Winter tyres on Light alloy	Goodyear	6mm / 6mm
2)	195/65 R15 91H	Winter tyres on Light alloy	Goodyear	6mm / 6mm

Replacement

Typ	Tyre size	Type of tyre	Manufacturer	Tread depth
	Tirefit	Expiration date 07/2027		

Legend: Tread depth information for tires on the left is in the first place, for tires on the right is in the second place on the axle in the direction of travel

Equipment

Standard equipment

- 12 V socket at the front
- Storage compartment in the front doors
- Storage compartment under the driver's seat
- Storage pocket on the back of the front seats
- Airbag: Head airbag system, front and rear
- Exterior mirrors electrically adjustable and heated
- Indicators with LED technology integrated in exterior mirrors
- On-board computer with outside temperature display
- Chrome applications interior
- Differential lock, electronic XDS (for front axle)
- Electronic parking brake (with auto-hold function)
- Electric rear window lifter (with anti-pinch protection)
- Electric front windows (with anti-pinch protection and one-touch function)
- Cruise control system GRA
- Cup holder in front
- Illuminated glove compartment
- Rear window wiper
- Air conditioning
- Headrests (2) front
- Steering wheel: Three-spoke leather steering wheel with multifunction controls
- Center console with integrated storage compartment, center armrest, cup holder and air vent, rear
- Upholstery: Cloth
- Radio: Media System Touch Colour (audio system with 5" colour touchscreen - SD card slot - Aux-in interface - Bluetooth interface with integrated hands-free system and audio streaming - multifunction steering wheel - 6 speakers)
- Wheels: Tyre fit
- Power steering (electromechanical)
- Seats: Passenger seat with height adjustment
- Seats: Driver's seat with height adjustment
- Seats: Rear seat backrest asymmetrically split folding
- Sun visor on driver's side with slot for parking disc and make-up mirror, illuminated
- Bumpers in body color
- "Front Assist" environment monitoring system with City Emergency Braking function
- Thermal insulation glazing
- Storage compartment in the middle area of the lower dashboard
- Storage net in the luggage compartment, left
- Airbag: Knee airbag system on the driver's side
- Airbag: Side airbag for driver and front passenger
- Exterior mirrors and door handles in body color
- Indicators with LED technology integrated in exterior mirrors
- Third brake light (integrated in tailgate)
- diesel particulate filter
- tachometer
- Electronic Stabilization Control (ESC) including anti-lock braking system (ABS) (including traction control (ASR))
- Luggage compartment cover
- Luggage compartment lighting
- Transmission: 5-speed manual
- Halogen twin headlights
- Heated rear window
- ISOFIX child seat securing system in the 2nd row of seats left and right (including Top Tether anchor points)
- Headrests (3) rear
- Reading lights, 2 rear
- Reading lights, 2 front
- Fog lights with cornering light function
- Package: LED interior lighting package (LED technology for - glove compartment - reading lights, 2 front / 2 rear - footwell lighting - luggage compartment lighting - vanity mirror lighting)
- Tire pressure monitoring indicator
- Wheels: Light alloy wheels (4) 6.5 J x 16" "Design II" (with tires 205/55 R 16)
- Leather gear knob
- Seat belts: Three-point automatic front and rear (warning buzzer for unfastened seat belts, front)
- Seats: Lumbar support for driver
- Sun visor on passenger side with illuminated make-up mirror
- Start-stop system and recuperation
- Daytime running lights in LED technology
- Lashing eyes in the luggage compartment
- Electronic immobilizer
- Central locking with radio remote control

Extra equipment

- Automatic distance control ACC
- Paint finish: metallic
- Package: Light and Vision (Rain sensor - Automatic dimming interior mirror - Light sensor with automatic headlight switching - Automatic Coming Home and Leaving Home function)



- Package: INFOTAIN Business Package (Navigation system with 8" color touchscreen - Dynamic route guidance via TMC - Color DOT matrix display in the instrument panel - CD player (MP3, WMA) - 2 SD card slots - 4 USB ports (2 in the front + 2 USB charging ports for the 2nd row of seats) - Bluetooth interface with integrated hands-free system and audio streaming - Multifunction display - Voice control - 8 speakers - Navigation data for Europe (on SD card) - Digital radio reception DAB+ - Full Link MirrorLink Apple CarPlay Android Auto)

- Package: Winter (Headlight cleaning system - Heated front windshield washer nozzles - Heated front seats)
- Ultrasonic parking aid, front and rear with optical parking aid

Brief expert findings

Documents submitted	At the time of the inspection, the registration certificate Part 2 (letter) was available, but the registration certificate Part 1 (certificate) was not. (Copy)
VIN comparison	The vehicle identification number (VIN) was read from the vehicle and its conformity with the submitted documents was verified during the inspection by the undersigned.
Inspection	The inspection conditions were sufficient for the assessment of the vehicle. Lifting equipment and a pit were available for examining the vehicle.
Test drive	No test drive/maneuvering was carried out during the inspection of the vehicle.
Engine function test	An engine test run was performed.

Value reducing factors

No.	Component group	Description
1	Front bumper	Front bumper (Übermäßige Steinschläge) - Stone chips - Paint
2	Side panel - rear left side	Side panel - Scratch(es) - Paint
3	Bonnet	Bonnet (Übermäßige Steinschläge) - Stone chips - Paint
4	Door - rear left side	Door - Dent / paintcoat damage - Repair and paint

Wear and tear

No.	Component group	Description
1	Body	Body - Scratch(es) - No deduction

The vehicle shows signs of wear commensurate with its age and use.

Order/Scope of order

The order was placed to prepare a sales report for the vehicle described. This includes the following:

- Description of core relevant information about the vehicle
- Documentation of equipment features
(Delivery by third-party service providers)
- Documentation of damage, defects, missing parts
- Documentation of previous damage, unrepaired previous damage, repainting
- a brief visual or functional inspection of the equipment details if possible.
(Functional tests of driver assistance systems are not included in the scope of services!)
- a photo documentation of the vehicle



Basis for the order

This product is based on the Alphabet Fuhrpark GmbH guidelines for vehicle returns and valuations. The expert makes the explicit findings in each individual case objectively within the framework of the specified standards based on his or her own expertise.

The vehicle inspection takes place in a disassembled state.

Damage or defects that can only be detected during disassembly/diagnosis work or through advanced knowledge remain within the scope of the prognosis risk. An extended risk exists for concealed defects caused by fraudulent deception and not identifiable by the expert.

Damage or defects resulting from normal use or wear and tear of the vehicle will be accepted according to the applicable standard.

There was no explicit identification or monetary consideration of the expected features within the product.

Features which in their nature and severity slightly exceed normal use but do not constitute unacceptable damage will be documented and identified under signs of use if necessary.

Damage or defects which, according to the underlying standard, can no longer be attributed to normal use or wear and tear are listed in the product under "Depreciating Factors".

Depending on the product specification, a monetary ID can be provided. If this takes place, the costs can be 100% d or pro rata depending on the vehicle's age and mileage.

Previous damages

Apparently, no repaired previous damage could be found on the vehicle.

Comments

- Der angegebene Winterradsatz ist kein Bestandteil der Fahrzeugausstattung.



Figure 1: Diagonal front (left)



Figure 2: Diagonal front (right)



Figure 3: Diagonal rear (left)



Figure 4: Diagonal rear (right)



Figure 5: Interior - front



Figure 6: Interior - rear



Figure 7: Instrument cluster



Figure 8: Instrument panel



Figure 9: interior 360° view



Figure 10: Cargo area



Figure 11: VIN



Figure 12: Mounted tyres

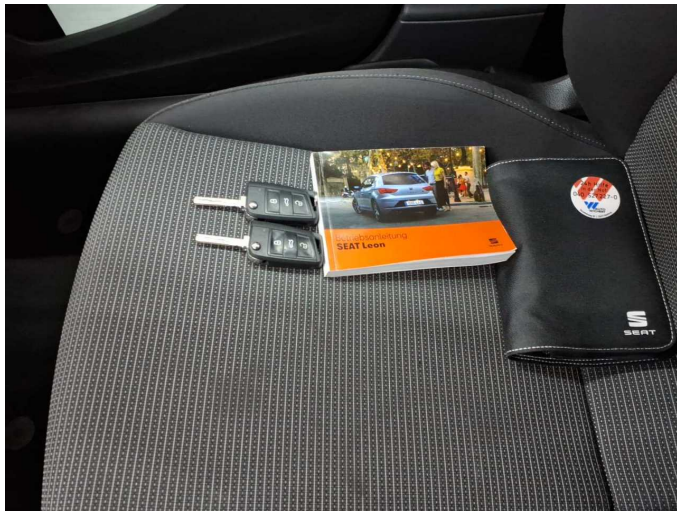


Figure 13: Documents



Figure 14: Documents



Figure 15: Additional tyres



Figure 16: Navigation



Figure 17: Misc.



Figure 18: Misc.



Figure 19: Misc.



Figure 20: Misc.



Figure 21: Misc.

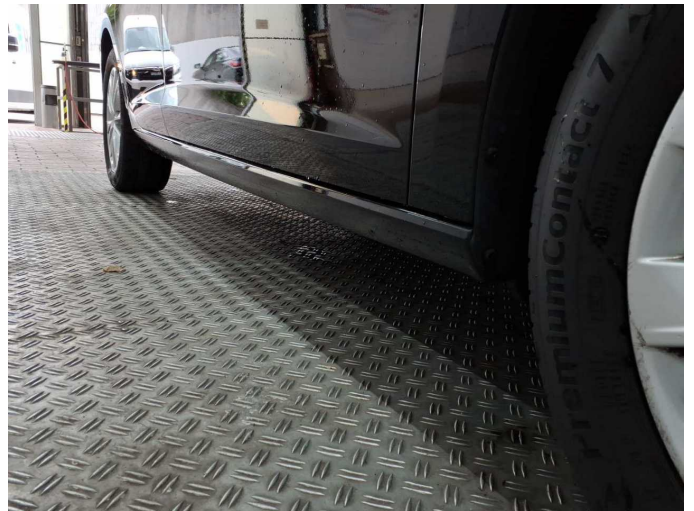


Figure 22: Misc.

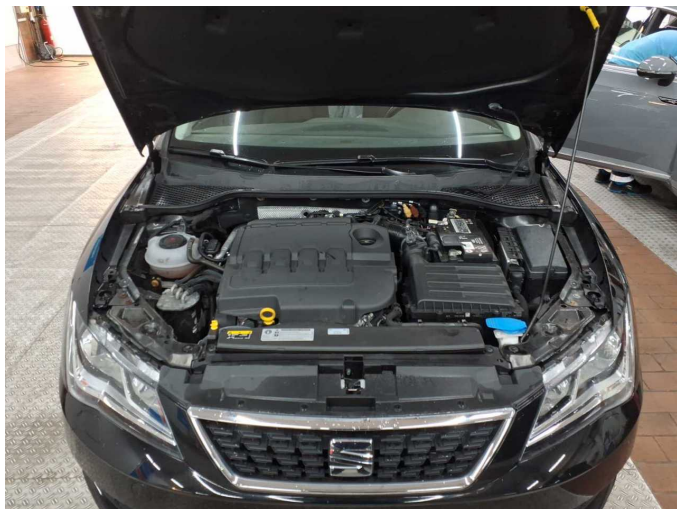


Figure 23: Misc.

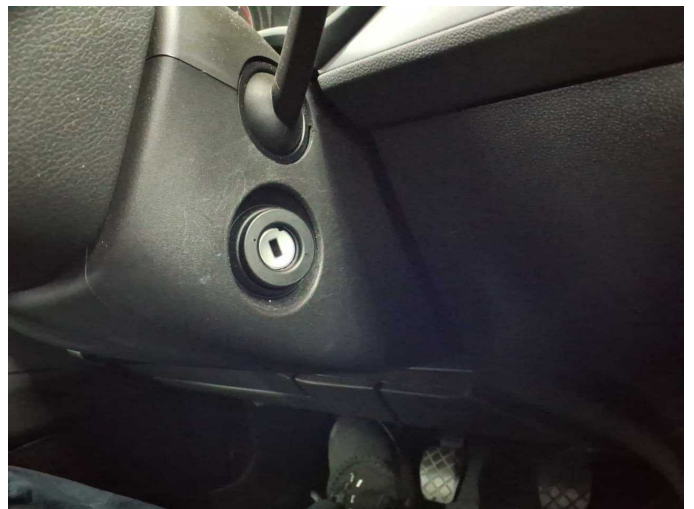


Figure 24: Misc.



Figure 25: Misc.



Figure 26: Misc.



Figure 27: Misc.



Figure 28: Misc.



Damage 1: Front bumper: Front bumper (Übermäßige Steinschläge) - Stone chips - Paint



Damage 1: Front bumper: Front bumper (Übermäßige Steinschläge) - Stone chips - Paint



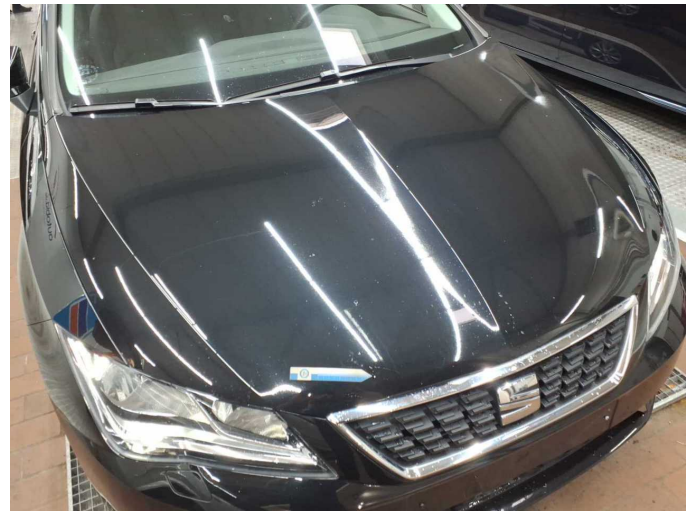
Damage 2: Side panel - rear left side: Side panel - Scratch(es) - Paint



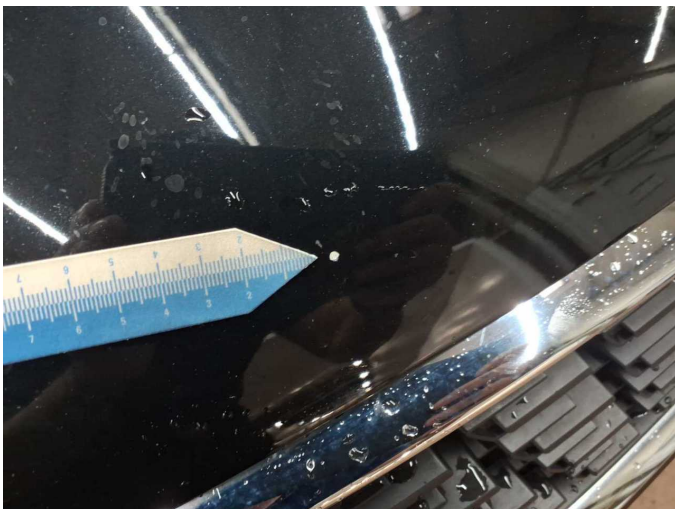
Damage 2: Side panel - rear left side: Side panel - Scratch(es) - Paint



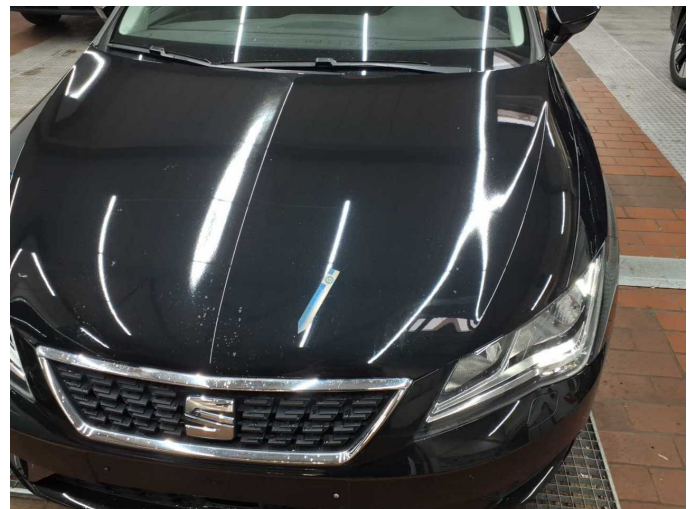
Damage 2: Side panel - rear left side: Side panel - Scratch(es) - Paint



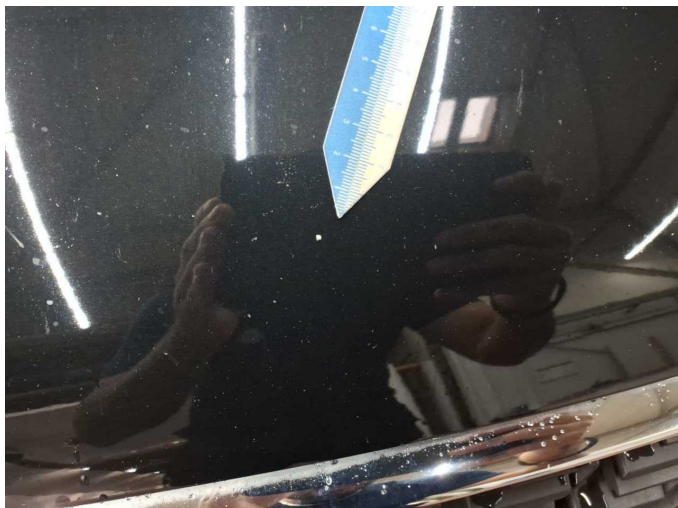
Damage 3: Bonnet: Bonnet (Übermäßige Steinschläge) - Stone chips - Paint



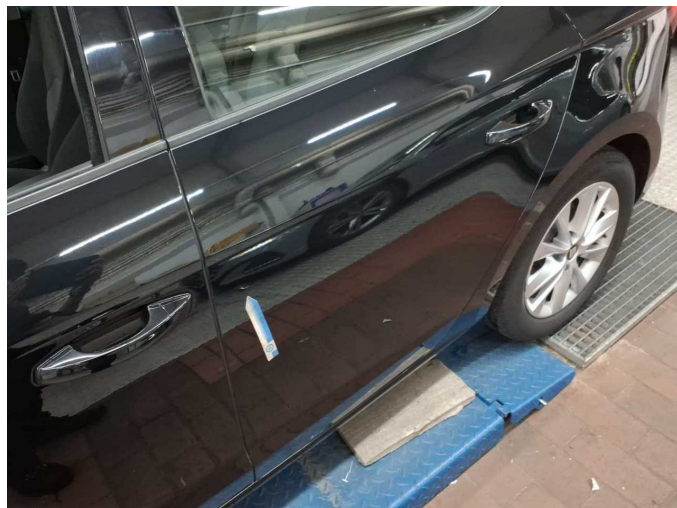
Damage 3: Bonnet: Bonnet (Übermäßige Steinschläge) - Stone chips - Paint



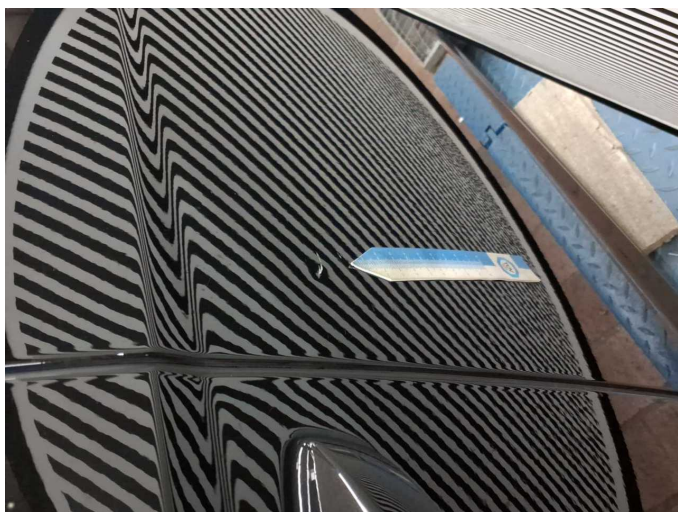
Damage 3: Bonnet: Bonnet (Übermäßige Steinschläge) - Stone chips - Paint



Damage 3: Bonnet: Bonnet (Übermäßige Steinschläge) - Stone chips - Paint



Damage 4: Door - rear left side: Door - Dent / paintcoat damage - Repair and paint



Damage 4: Door - rear left side: Door - Dent / paintcoat damage - Repair and paint



Wartungshistorie

(gemäß Auftraggeber Informationen)

Fahrgestellnummer: VF3YC2MFB12G29171
Hersteller / Modell: PEUGEOT PEUGEOT Boxer HDi 335 L2H2 Pro

Datum	KM-Stand	Beschreibung
23.09.2024	19.444	Motoröl b. Wartung; Ölfilter ern; Ölwechsel; Reparatur Sonstiges; Systemtest/Eigendiagnose; Wartung Sonstiges; Wartung Sonstiges
03.12.2022	12.766	AU; Kraftstofffilter ern; Luftfiltereinsatz ern; Motoröl b. Wartung; Ölfilter ern; Regelwartungsdienst; Reparatur Sonstiges; Wartung Sonstiges; Wartung Sonstiges
28.07.2021	8.094	Kleine Inspektion; Bremsflüssigkeit ern; Motoröl b. Wartung