



Expertise

Protocol number: 40841559
Order No. / Reference: 24953375
Inspection date: 30 Jul 2025

Manufacturer: Seat	Model: Ateca 2.0 TDI 4Drive DSG Style
VIN: VSSZZZ5FZL6557030	



Vehicle details	
Manufacturer / Type / Model / Equipment	
Seat Ateca 2.0 TDI 4Drive DSG Style	
Vehicle Identification number	VSSZZZ5FZL6557030
Mileage (Read)	89,027 km
First registration	10 Mar 2020
Number of holders	1
Power / Engine displacement	110 kw / 1,968 ccm
Fuel type / Cylinder	Diesel / 4
Gearbox / Number of gears	Automatic / 7
Type of drive	All-wheel drive
Type of vehicle	SUV
Colour / colour code	Velvet Rot Metallic
Doors / Seats	5 / 5
Upholstery type	Cloth
Colour of upholstery	Anthracite-Blue
Vehicle with smoke odor	no



Vehicle details

Maintenance booklet / proof	digital proof / complete	Next maintenance in	18,500 km
Last maintenance on / at	03/2025 at 84,378 km		
Key is / should be	2 / 2	FZG documents	ZB#2 (B) was available (copy), ZB#1 (S) was not available
		Letter No.	FR316030
Previous damage / Accident	None detectable	Repainting	None detectable
Inspection conditions	Sufficient	Lifting equipment / pit	yes
Test drive	Not performed	Engine function test	Performed
Manufacturer key number/ type code number	7593 / AMM 00040		
Emission standard	EURO6;WLTP;DG;PI/CI; M, N1 I	Fine dust sticker	
Permitted total weight	2,120 kg	Empty weight	

Tyres

Mounted tyres

#	Tyre size	Type of tyre	Manufacturer	Tread depth
1)	225/55 R17 97W	Summer tyres on Light alloy	Michelin	4mm / 4mm
2)	225/55 R17 97W	Summer tyres on Light alloy	Michelin	7mm / 7mm

Additional tyres

#	Tyre size	Type of tyre	Manufacturer	Tread depth
1)	215/60 R16 99H	Winter tyres on Steel	Goodyear	5mm / 5mm
2)	215/60 R16 99H	Winter tyres on Steel	Goodyear	7mm / 7mm

Replacement

Typ	Tyre size	Type of tyre	Manufacturer	Tread depth
	Tirefit	Expiration date 05/2027		

Legend: Tread depth information for tires on the left is in the first place, for tires on the right is in the second place on the axle in the direction of travel

Equipment

Standard equipment

- 12 V socket at the front
- Storage compartment in the middle area of the lower dashboard
- Storage pocket on the back of the front seats
- Exterior mirrors electrically adjustable, folding and heated (indicator lights integrated in exterior mirrors)
- Outside temperature display
- Hill Start Assist (HHC)
- chrome applications in the interior
- Electronic differential lock (XDS)
- Three-point automatic seat belts, front and rear, with belt tensioners (with warning buzzer for unfastened seat belts)
- Electronic Stabilization Control (ESC) (including anti-lock braking system (ABS) and anti-skid control (ASR))
- Footwell lighting
- gear recommendation display
- Cruise control system (GRA)
- Halogen twin headlights
- Rear lights in LED technology
- ISOFIX child seat securing system (in the 2nd row of seats left and right, including top tether anchor points)
- Headrests, 2 front, 3 rear
- Black radiator grille with chrome strip
- Steering wheel: Three-spoke leather steering wheel with multifunction controls (including Bluetooth interface with integrated hands-free system and audio streaming)
- Fatigue detection
- Fog lights with cornering light function
- Radio: Media System Plus Style, Xcellence, FR (Audio system with 8" color touchscreen - USB and Aux-in interface - 2 USB charging ports for the 2nd row of seats - Bluetooth interface with integrated hands-free system and audio streaming - 8 speakers - Multifunction display with multicolor display in the instrument panel)
- Shift paddles on the steering wheel
- Power steering, electromechanical
- Seats: Driver's seat with height adjustment
- Seats: Remote release for folding the rear seat backrest in the trunk
- Seats: Lumbar support for driver and front passenger with height adjustment for front passenger seat
- Start-stop technology
- Daytime running lights in LED technology
- Ultrasonic rear parking aid
- Lashing eyes in the luggage compartment
- Electronic immobilizer
- Thermal insulation glazing
- Central locking, including tailgate, with radio remote control
- Sunglasses storage compartment on the driver's side
- Storage compartment in the front doors
- storage compartment under the driver's seat
- Airbags (driver and front passenger airbags (passenger airbag deactivation) - driver and front passenger side airbags - head airbag system, front and rear - driver's knee airbag)
- On-board computer
- diesel particulate filter
- tachometer
- Third brake light, integrated in the tailgate
- Electronic parking brake including auto-hold function
- Chassis: 4Drive all-wheel drive
- Electric windows front and rear (with anti-pinch protection and one-touch function at the front)
- Luggage compartment cover
- Transmission: 7-speed DSG automatic transmission
- Illuminated glove compartment
- Rear window wiper and rear window heater
- Body covers on the wheel arches
- Climatronic air conditioning system with electronic temperature control (separate temperature control for driver and front passenger)
- Reading lights, 2 front and 2 rear
- Armrest - centre, rear
- Center console with integrated storage compartment, center armrest cup holder and rear air vents
- Upholstery: Cloth
- Tire Pressure Monitoring System (TPMS)
- Wheels: 4 light alloy wheels "Dynamic" (for 4Drive) (7J x 17 with tires 225/55 R 17)
- Wheels: Tyre fit
- Rear seat backrest asymmetrically split and foldable
- Leather gear knob
- SEAT Drive Profile with "Driving Experience" button and progressive steering (driving profiles can be individually selected - the selected driving profile influences steering assistance, throttle response, and gearshift characteristics (with DSG))
- Sun visor on driver's side and passenger's side (on passenger side with illuminated vanity mirror - on driver's side with insert for parking disc and illuminated vanity mirror)
- Front Assist area monitoring system with City Emergency Braking (If the distance to the vehicle in front decreases and the driver fails to react, the Front Assist area monitoring system automatically brakes the vehicle. The City Emergency Braking function detects pedestrians in the roadway and automatically activates the brakes.)

Extra equipment



- Swiveling tow bar with electric release
- Navigation: Navigation data Europe (on SD card) for navigation system
- Package: LED interior lighting (consisting of LED technology for: - Ambient lighting (multicolor) in the door trim - Ambient lighting front - Footwell lighting - Trunk lighting - Reading lights, 2 front / 2 rear - Vanity mirror lighting)
- Package: Winter (consisting of: - Headlight cleaning system - Heated windshield washer nozzles - Heated front seats)
- Paint finish: metallic
- Navigation system with 8" color touchscreen (dynamic route guidance via TMC - SD card slot - USB and Aux-in interface - 2 USB charging ports for the 2nd row of seats - voice control)
- Light and Vision Package (Automatic Coming Home and Leaving Home function - Automatic dimming interior mirror - Light sensor with automatic headlight switching - Rain sensor)
- Panoramic glass sunroof, electric including sun blind
- Rear view camera

Brief expert findings

Documents submitted	At the time of the inspection, the registration certificate Part 2 (letter) was available, but the registration certificate Part 1 (certificate) was not. (Copy)
VIN comparison	The vehicle identification number (VIN) was read and the undersigned verified that it matched the documents submitted during the inspection.
Inspection	The inspection conditions were sufficient for the assessment of the vehicle. Lifting equipment and a pit were available for examining the vehicle.
Test drive	No test drive/maneuvering was carried out during the inspection of the vehicle.
Engine function test	An engine test run was performed.

Value reducing factors

No.	Component group	Description
1	Mudguard - left side	Mudguard - left side - dent(s) - Smart repair
2	Side panel - rear right side	Side panel - Dent / paintcoat damage - Smart repair
3	Door - rear right side	Brightware - lower - Scratched - Replace
4	Front bumper	Spoiler - Scratched - Replace

Wear and tear

No.	Component group	Description
1	Steering system	Steering wheel - Abrasion - No deduction
2	Body	Body - Soiled - No deduction
3	Body	Body - Scratch(es) - No deduction
4	Seat - front	Seat cover - left side - Abrasion - No deduction
5	Door - front left side	Door edge - Scratched - No deduction
6	Roof	Roof - dent(s) - No deduction
7	Rear bumper	Rear bumper (Verladebereich) - Scratch(es) - No deduction

The vehicle shows signs of wear commensurate with its age and use.



Order/Scope of order

The order was placed to prepare a sales report for the vehicle described. This includes the following:

- Description of core relevant information about the vehicle
- Documentation of equipment features
(Delivery by third-party service providers)
- Documentation of damage, defects, missing parts
- Documentation of previous damage, unrepaired previous damage, repainting
- a brief visual or functional inspection of the equipment details if possible.
(Functional tests of driver assistance systems are not included in the scope of services!)
- a photo documentation of the vehicle

Basis for the order

This product is based on the Alphabet Fuhrpark GmbH guidelines for vehicle returns and valuations. The expert makes the explicit findings in each individual case objectively within the framework of the specified standards based on his or her own expertise.

The vehicle inspection takes place in a disassembled state.

Damage or defects that can only be detected during disassembly/diagnosis work or through advanced knowledge remain within the scope of the prognosis risk. An extended risk exists for concealed defects caused by fraudulent deception and not identifiable by the expert.

Damage or defects resulting from normal use or wear and tear of the vehicle will be accepted according to the applicable standard.

There was no explicit identification or monetary consideration of the expected features within the product.

Features which in their nature and severity slightly exceed normal use but do not constitute unacceptable damage will be documented and identified under signs of use if necessary.

Damage or defects which, according to the underlying standard, can no longer be attributed to normal use or wear and tear are listed in the product under "Depreciating Factors".

Depending on the product specification, a monetary ID can be provided. If this takes place, the costs can be 100% d or pro rata depending on the vehicle's age and mileage.

Previous damages

Apparently, no repaired previous damage could be found on the vehicle.

Comments

- Winterradsatz ist kein Bestandteil des Auslieferungsumfangs.



Figure 1: Diagonal front (left)



Figure 2: Diagonal front (right)



Figure 3: Diagonal rear (left)



Figure 4: Diagonal rear (right)



Figure 5: Interior - front



Figure 6: Interior - rear



Figure 7: Instrument cluster



Figure 8: Instrument panel



Figure 9: interior 360° view

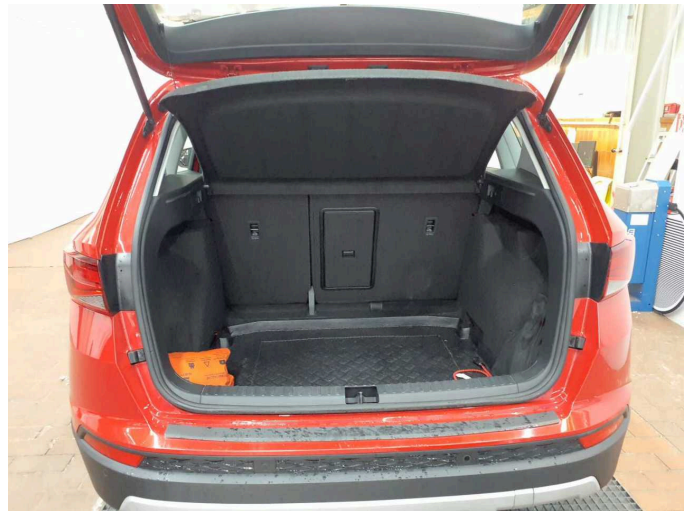


Figure 10: Cargo area



Figure 11: VIN



Figure 12: Mounted tyres

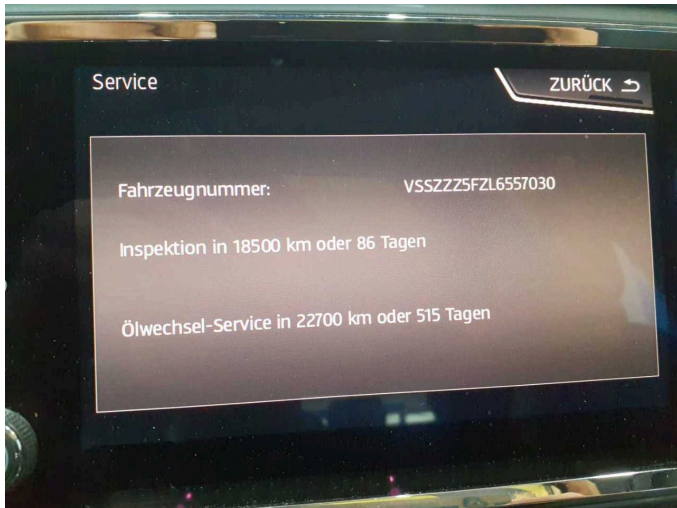


Figure 13: Documents

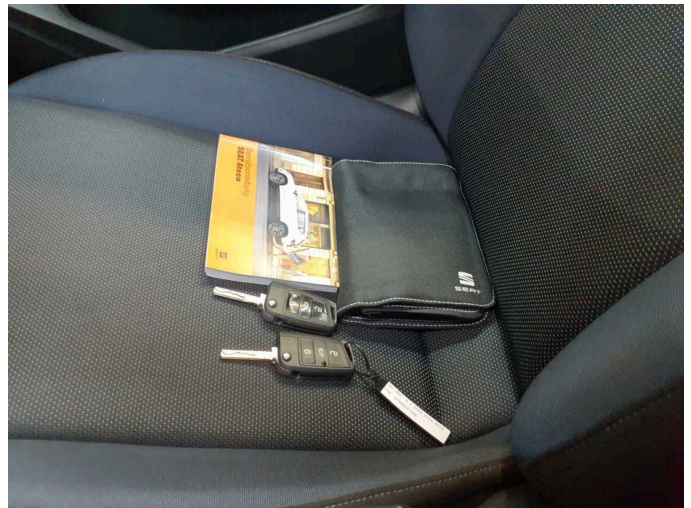


Figure 14: Documents



Figure 15: Additional tyres



Figure 16: Navigation



Figure 17: Misc.

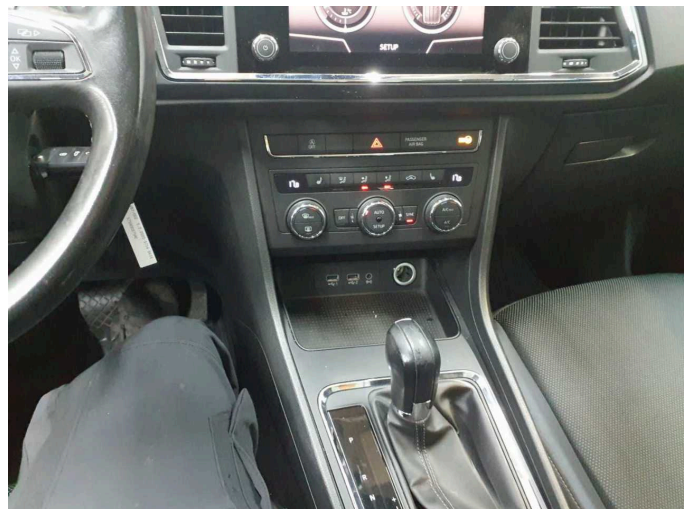


Figure 18: Misc.



Figure 19: Misc.



Figure 20: Misc.



Figure 21: Misc.



Figure 22: Misc.



Figure 23: Misc.

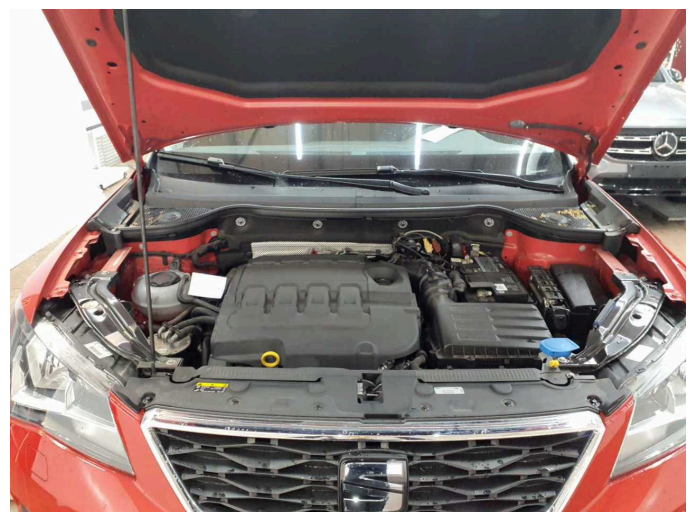


Figure 24: Misc.



Figure 25: Misc.



Figure 26: Misc.



Figure 27: Misc.



Figure 28: Misc.



Figure 29: Misc.

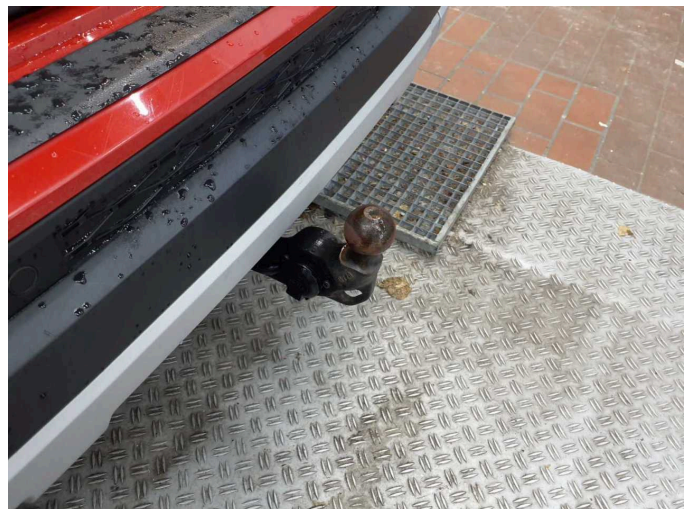


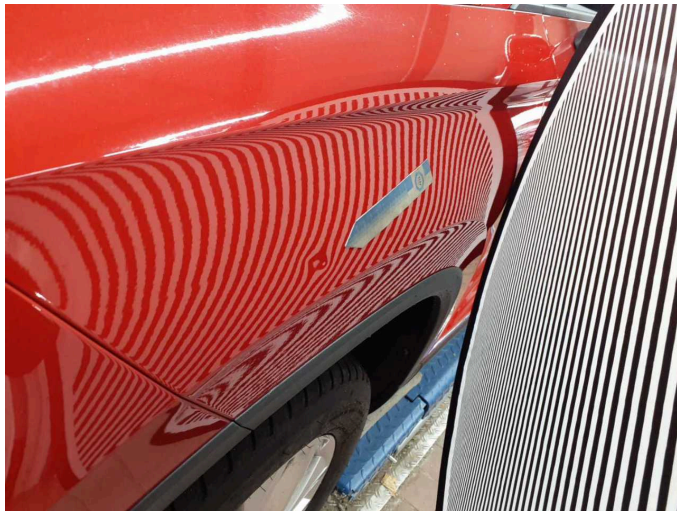
Figure 30: Misc.



Figure 31: Misc.



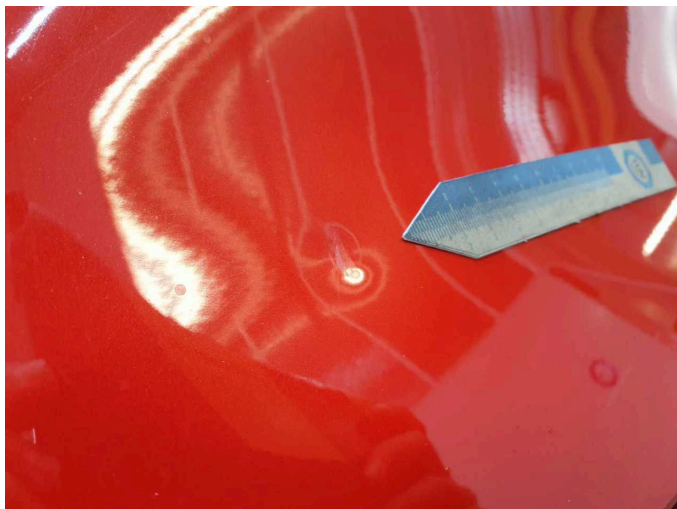
Damage 1: Mudguard - left side: Mudguard - left side - dent(s) - Smart repair



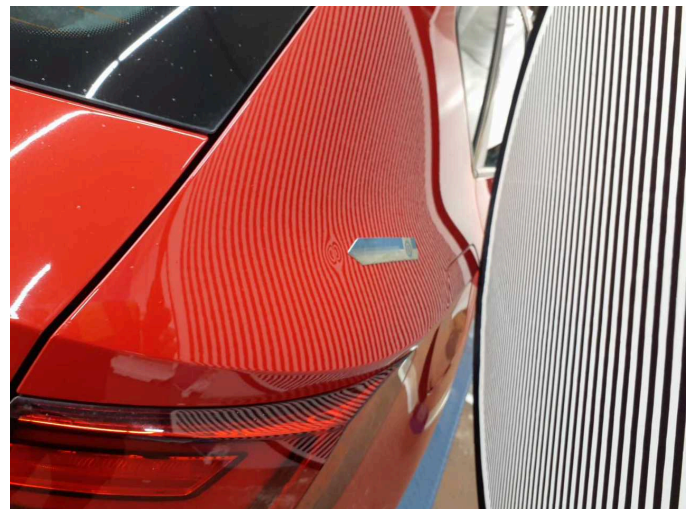
Damage 1: Mudguard - left side: Mudguard - left side - dent(s) - Smart repair



Damage 2: Side panel - rear right side: Side panel - Dent / paintcoat damage - Smart repair



Damage 2: Side panel - rear right side: Side panel - Dent / paintcoat damage - Smart repair



Damage 2: Side panel - rear right side: Side panel - Dent / paintcoat damage - Smart repair



Damage 3: Door - rear right side: Brightware - lower - Scratched - Replace



Damage 3: Door - rear right side: Brightware - lower - Scratched - Replace



Damage 4: Front bumper: Spoiler - Scratched - Replace



Damage 4: Front bumper: Spoiler - Scratched - Replace



Damage 4: Front bumper: Spoiler - Scratched - Replace



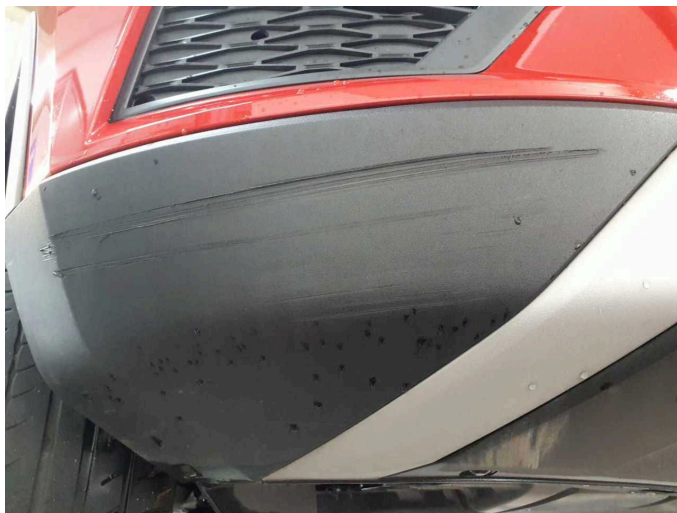
Damage 4: Front bumper: Spoiler - Scratched - Replace



Damage 4: Front bumper: Spoiler - Scratched - Replace



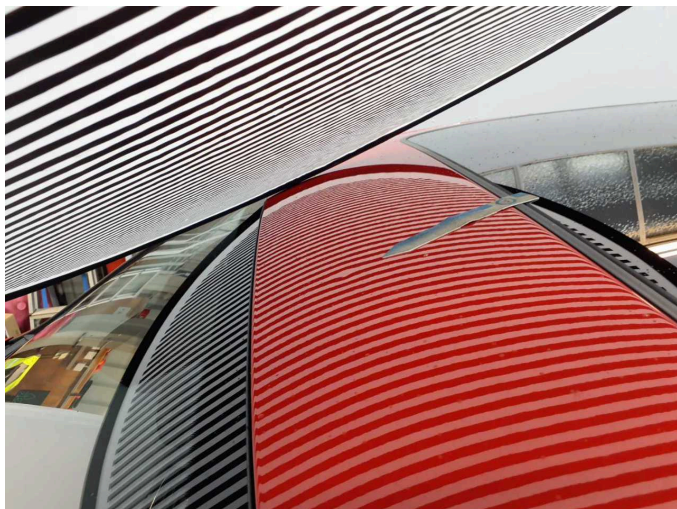
Damage 4: Front bumper: Spoiler - Scratched - Replace



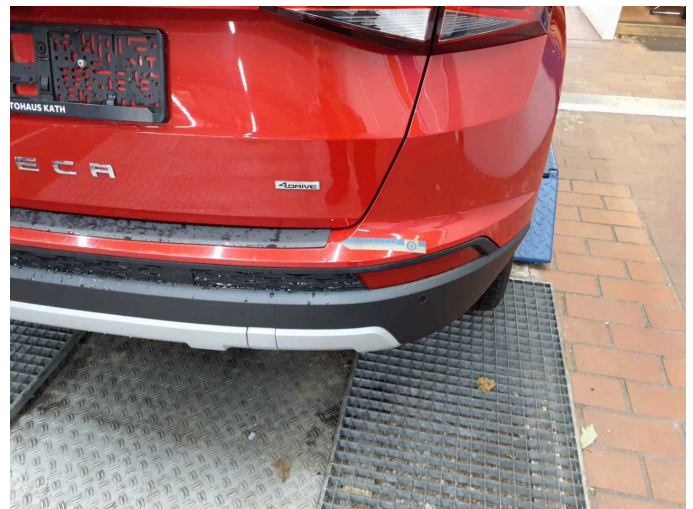
Damage 4: Front bumper: Spoiler - Scratched - Replace



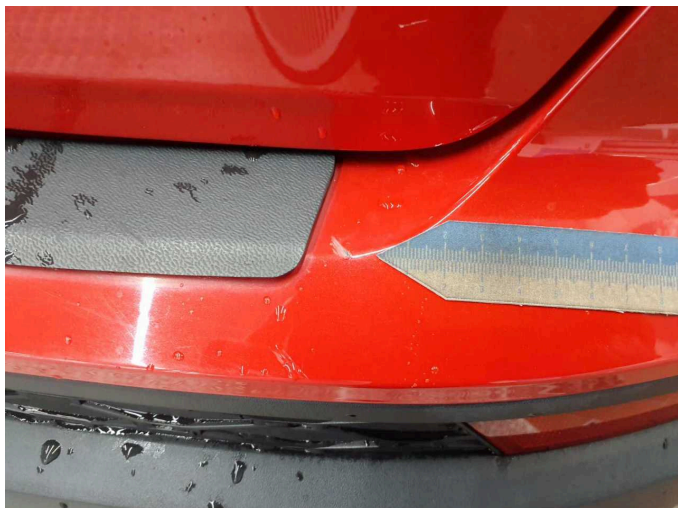
Wear and tear 6: Roof: Roof - dent(s) - No deduction



Wear and tear 6: Roof: Roof - dent(s) - No deduction



Wear and tear 7: Rear bumper: Rear bumper (Verladebereich) - Scratch(es) - No deduction



Wear and tear 7: Rear bumper: Rear bumper (Verladebereich) -
Scratch(es) - No deduction



Wartungshistorie

(gemäß Auftraggeber Informationen)

Fahrgestellnummer: VSSZZZ5FZL6557030

Hersteller / Modell: SEAT SEAT Ateca 2.0 TDI 4Drive DSG Style

Datum	KM-Stand	Beschreibung
03.03.2025	84.378	AU; Motoröl b. Wartung; Ölfilter ern; Ölwechsel; Wartung Sonstiges
24.10.2024	77.434	Motoröl b. Wartung; Regelwartungsdienst; Wartung Sonstiges
09.10.2023	61.773	Bremse Sonstiges; Bremsklötze hinten; Bremsscheiben hinten; Regelwartungsdienst; Wartung Sonstiges
28.07.2023	57.366	Bremsflüssigkeit; Bremsflüssigkeit ern; Getriebeöl ern/prüfen; Motoröl b. Wartung; Ölfilter ern; Ölwechsel; Ölwechsel - Hinterachse; Wartung Sonstiges
13.03.2023	51.275	AU
19.10.2022	44.281	Regelwartungsdienst
19.10.2021	28.312	Grosse Inspektion; Motoröl b. Wartung