



# SEAT Leon

## Leon 2.0 TDI DPF Start&Stop

VIN NO VSSZZZ5FZJR149707

Registration Number FZJR149707



MOT Date

2027-07-01

Last Service

2025-02-18

Number of Owners

2

Last Service Mileage

106264

Number of Keys

2

First Registration Date

2018-06-17

Odometer Reading

116633 km

Country First Registered

Germany

### Inspection Report Summary

Customer	BCA Online	Report Number	P20250909112222
Inspection Date / Place	2025-09-09 / ARS Altmann AG Riedstadt	Cosmetic Grade	3

### Vehicle Summary

Vehicle Condition	Runner	VAT Type	Margin
Fuel Type	Diesel	Road Worthy	Yes
Colour	Blue	Engine Size (cc)	1968
Engine Size	2.0	No of Doors	5
Body Type	Sedan	Drive Train	Front
Seat Colour		No of Seats	5
Seat Covering Name	Anthrazit	Seat Covering	Cloth
Charging Cables		NEDC CO2 Rating (q/km)	110
Gearbox Type	Manual		

### Vehicle History & Documents

Service Book Available	Full Service History	Next Service Mileage	km
Previous Usage		Imported	No
Manufacturer Warrenty			









## Equipment

Trip Computer	Airbag Status	Anti-lock braking	Bluetooth telephone interface
Diesel particulate filter	Front parking sensors	Heated wing mirrors	Remote central locking
Stability control	Leather steering wheel	Rear parking sensors	USB Socket
Alloys wheels	Auxiliary Socket	Cruise control	Front fog lamps
Headlamp wash/wipe	Remote adjusting wing mirrors	Split folding rear seats	Central locking

Radio

## Equipment Details

Air Conditioning	Yes	Alloy Wheel Size	16
Extra Wheel / Tyre Set	Summer Tyres - Alloy	Seat Heating	Front

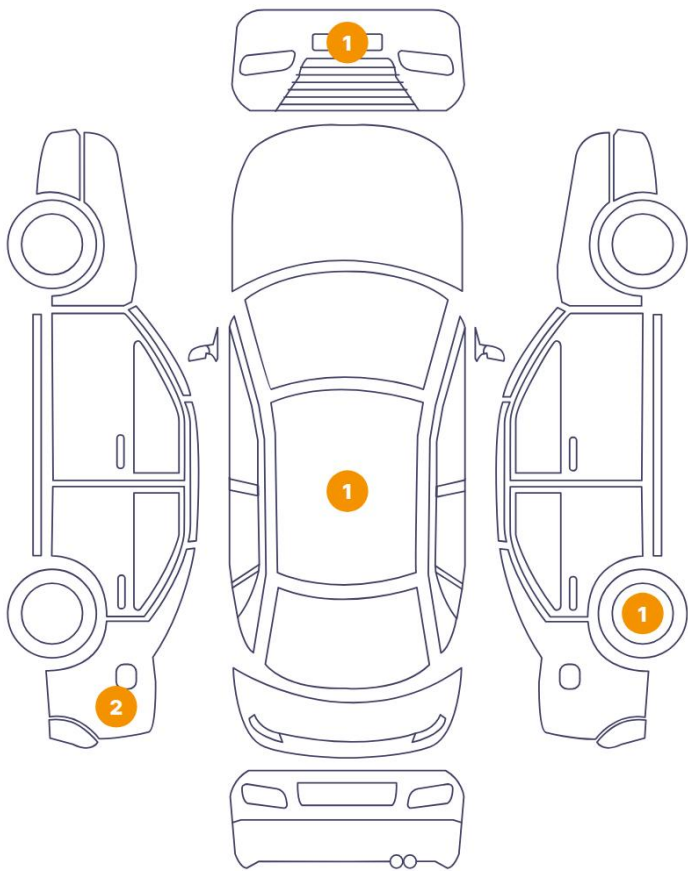
## Wheels & Tyres

Right Front Tyre Depth	8	Left Front Tyre Depth	8
Right Rear Tyre Depth	8	Left Rear Tyre Depth	8
Extra Wheel - 1 Tyre Depth	3	Extra Wheel - 2 Tyre Depth	3
Extra Wheel - 3 Tyre Depth	4	Extra Wheel - 4 Tyre Depth	4

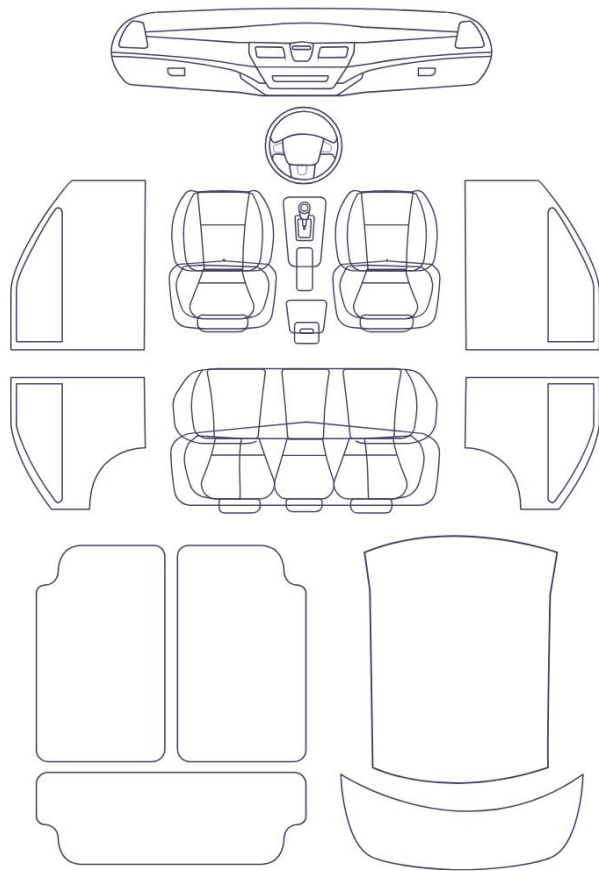


Cosmetic Damage

5 Schäden



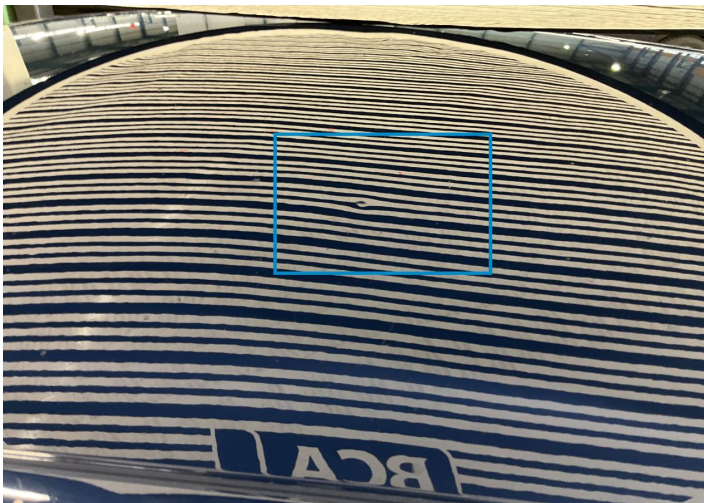
0 Schäden



Component	Damage	Comments
1 Bumper / Front	Paint / Scratch / Scuff	
2 Roof	Bodywork / Dent / Dent	
3 Fender / Back Left	Bodywork / Dent / Dent	
4 Rim / Back Right	Out of Bodywork / Scratch	
5 Side Panel / Back Left	Paint / Poor Previous Repair	



1. Bumper / Front  
Paint / Scratch / Scuff -



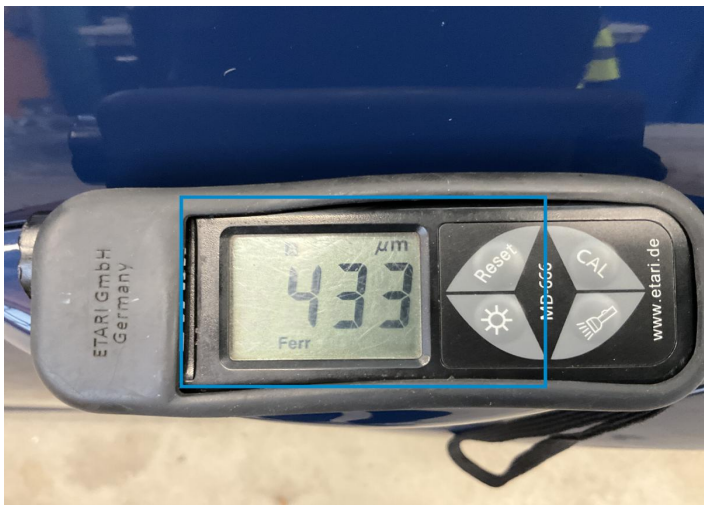
2. Roof  
Bodywork / Dent / Dent -



3. Fender / Back Left  
Bodywork / Dent / Dent -



4. Rim / Back Right  
Out of Bodywork / Scratch -



5. Side Panel / Back Left  
Paint / Poor Previous Repair -

## Mechanical Condition

### Control Lights

Display Defect	✓	Service Light	✓
ABS Warning Light	✓	ESP Fault/Traction Control Malfunction Light	✓
Diesel Particulate Filter Light	✓	Airbag Warning Light	✓
Oil Pressure Warning Light	✓	Power Steering Warning Light	✓
Brake Warning Light	✓	Alternator / Battery	✓
No Dashboard Lights	✓	Tire Pressure Monitoring System	✓

### Equipments Test

Central Locking	✓	Main & Spare Keys Functioning	!
Electric Windows	✓	Audio Equipment	✓
AC / Heating System	✓		

### Engine

Engine Status / EML	✓	Engine Leak Visible	✓
Engine Starts	✓		

### Gearbox

Gear Box	✓
----------	---

### Levels

Brakes Fluid	✓	Coolant Fluid	✓
--------------	---	---------------	---



Test Drive Inspection

Steering Wheel			
Steering   Noise / Anomaly		✔	
Engine			
Engine Noise	✔	The Gears Scratch / Skip / Abnormal Operation	✔
Fume Quantity	✔	Power Loss	✔
Clutch			
Clutch Functioning	❗		
Brake			
Brake System Anomaly	✔		
General			
Test Driven Status		✔	
✔ No troubles detected, good condition or correct tests, according to vehicle age and mileage			
❗ Damages or malfunction detected that requires repairs by the buyer			
NA Not applicable			
= Not tested			

Disclaimer

Please also note the "UserGuide condition report", which shows the scope of the vehicle description.

[User Guide](#)