



SEAT Leon

Leon 2.0 TDI DPF Start&Stop

VIN NO VSSZZZ5FZJR016734
Registration Number FZJR016734



MOT Date	Number of Owners	Number of Keys	Odometer Reading
2026-10-01	2	2	128245 km
Last Service	Last Service Mileage	First Registration Date	Country First Registered
-	-	2017-08-08	Germany

Inspection Report Summary

Customer	BCA Online	Report Number	P20250919102013
Inspection Date / Place	2025-09-19 / BCA Neuss	Cosmetic Grade	5

Vehicle Summary

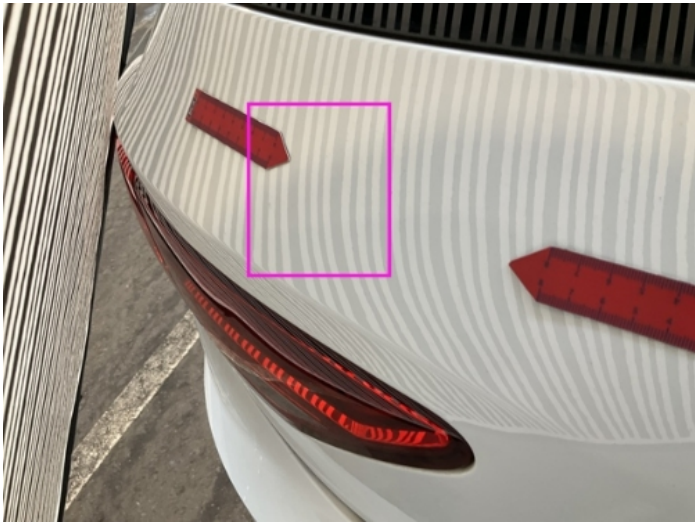
Vehicle Condition	Runner	VAT Type	Margin
Fuel Type	Diesel	Gearbox Type	Manual
Colour	White	Engine Size (cc)	1968
Engine Size	2.0	No of Doors	5
Body Type	Sedan	Drive Train	Front
Seat Colour		No of Seats	5
Seat Covering Name	Schwarz	Seat Covering	Cloth/Synthetic Leather
Charging Cables		NEDC CO2 Rating (q/km)	112

Vehicle History & Documents

Service Book Available	Missing	Next Service Mileage	km
Previous Usage		Imported	No
Manufacturer Warrenty			







Equipment

Tinted Glass	Airbag Status	Anti-lock braking	Bluetooth telephone interface
Diesel particulate filter	Front fog lamps	Headlamp wash/wipe	Remote adjusting wing mirrors
Satellite navigation	CD Player	Leather steering wheel	Radio
USB Socket	Alloys wheels	Auxiliary Socket	Cruise control
Enhanced speaker system	Front parking sensors	Heated wing mirrors	Remote central locking
Stability control	Electrically folding wing mirrors	LED Headlamps	Rear parking sensors

Equipment Details

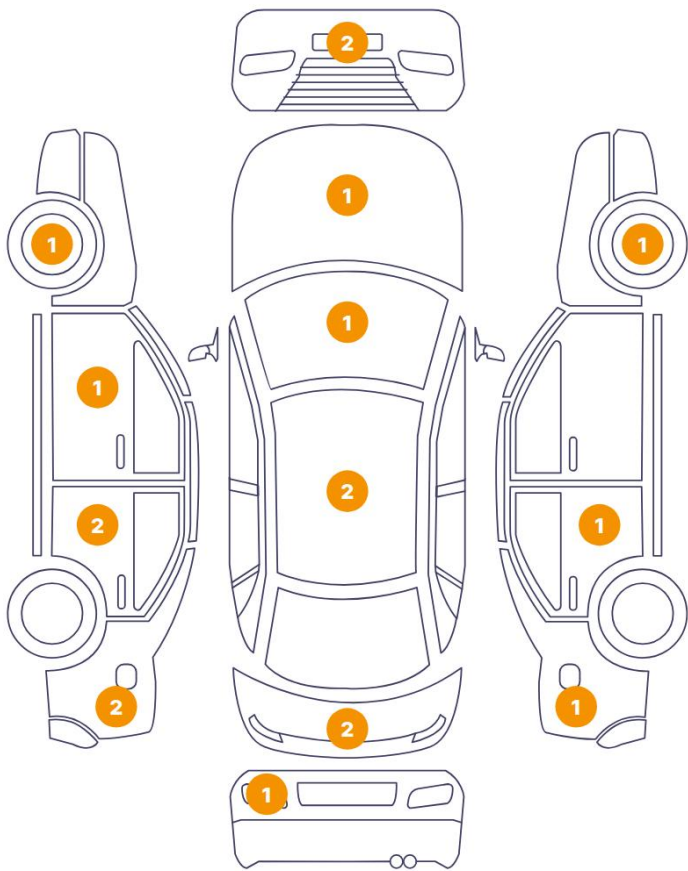
Air Conditioning	Dual Zone Climate Control	Alloy Wheel Size	17
Seat Heating	Front		

Wheels & Tyres

Right Front Tyre Depth	4	Left Front Tyre Depth	4
Right Rear Tyre Depth	3	Left Rear Tyre Depth	3

Cosmetic Damage

18 Schäden



0 Schäden



Component		Damage	Comments
1	Door / Front Left	Paint / Poor Previous Repair	
2	Door / Back Left	Paint / Poor Previous Repair	
3	Fender / Back Left	Paint / Poor Previous Repair	
4	Windshield / Front	Glass Break / Impact	
5	Hood	Paint / Stone Chip	
6	Bumper / Front	Bodywork / Breakage	
7	Corner Bumper / Front Left	Paint / Scratch / Scuff	
8	Rim / Front Left	Out of Bodywork / Scratch	
9	Door / Back Left	Bodywork / Dent / Dent	
10	Fender / Back Left	Bodywork / Dent / Dent	
11	Roof	Paint / Corrosion	
12	Roof	Bodywork / Dent / Dent	

13	Back Light / Left	Glass Break
14	Tailgate	Bodywork / Dent / Dent
15	Tailgate	Bodywork / Dent / Dent
16	Fender / Back Right	Bodywork / Dent / Dent
17	Door / Back Right	Bodywork / Dent / Dent
18	Rim / Front Right	Out of Bodywork / Scratch



1. Door / Front Left
Paint / Poor Previous Repair -



2. Door / Back Left
Paint / Poor Previous Repair -



3. Fender / Back Left
Paint / Poor Previous Repair -



4. Windshield / Front
Glass Break / Impact -



5. Hood
Paint / Stone Chip -



6. Bumper / Front
Bodywork / Breakage -



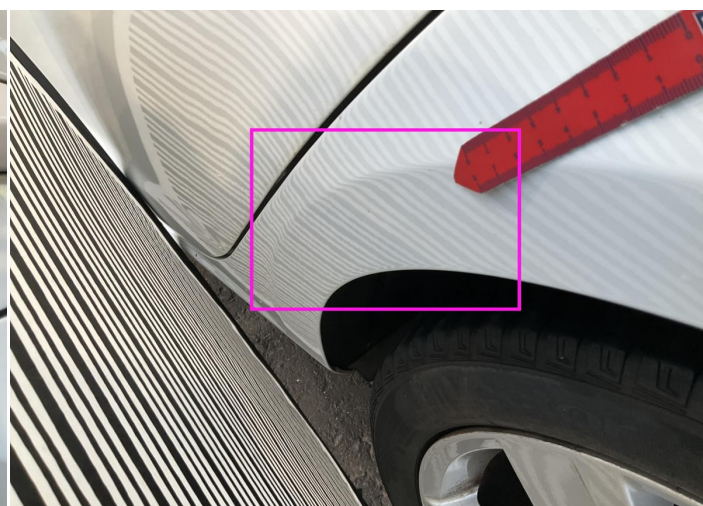
7. Corner Bumper / Front Left
Paint / Scratch / Scuff -



8. Rim / Front Left
Out of Bodywork / Scratch -



9. Door / Back Left
Bodywork / Dent / Dent -



10. Fender / Back Left
Bodywork / Dent / Dent -



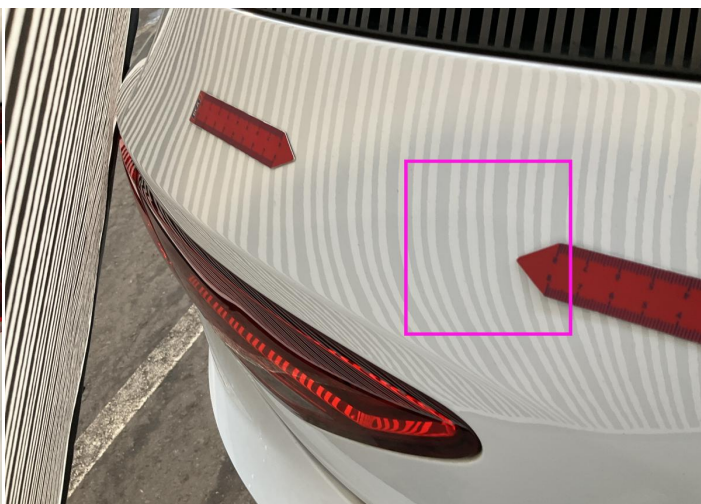
11. Roof
Paint / Corrosion -



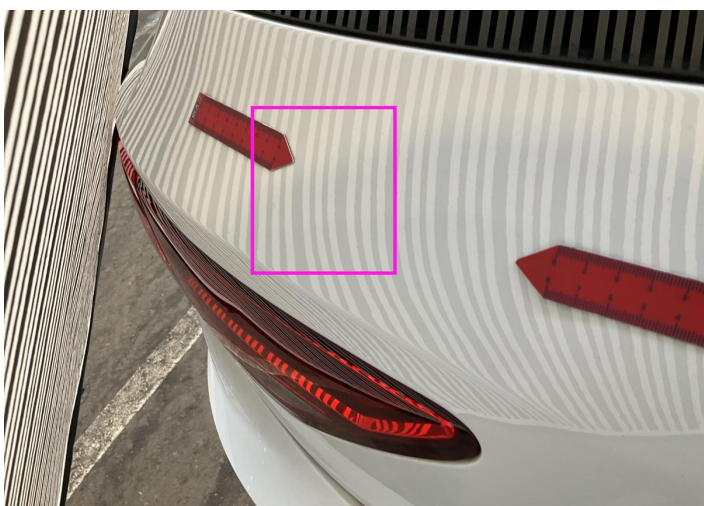
12. Roof
Bodywork / Dent / Dent -



13. Back Light / Left
Glass Break -



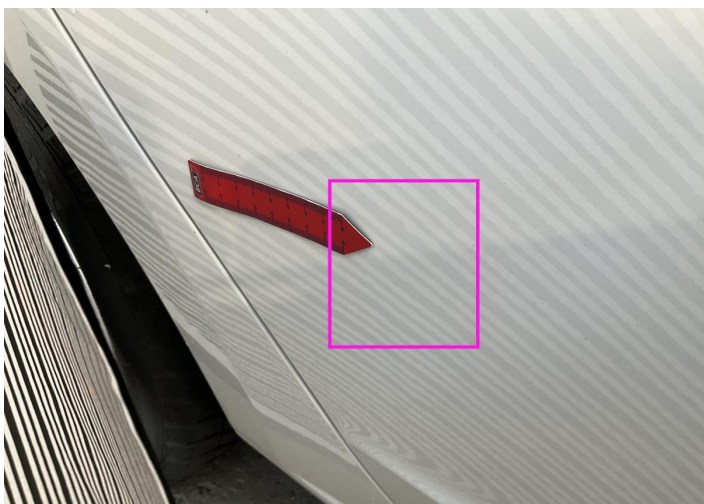
14. Tailgate
Bodywork / Dent / Dent -



15. Tailgate
Bodywork / Dent / Dent -



16. Fender / Back Right
Bodywork / Dent / Dent -



17. Door / Back Right
Bodywork / Dent / Dent -



18. Rim / Front Right
Out of Bodywork / Scratch -

Mechanical Condition

Control Lights

ABS Warning Light	✓	ESP Fault/Traction Control Malfunction Light	✓
Diesel Particulate Filter Light	✓	Airbag Warning Light	✓
Oil Pressure Warning Light	✓	Brake Warning Light	✓
Power Steering Warning Light	✓	Alternator / Battery	✓
No Dashboard Lights	!	Display Defect	✓
Tire Pressure Monitoring System	✓		

Engine

Engine Status / EML	✓	Engine Leak Visible	✓
Engine Starts	✓		

Gearbox

Gear Box	✓
----------	---

Equipments Test

Electric Windows	✓	Audio Equipment	✓
AC / Heating System	✓	Main & Spare Keys Functioning	✓
Navigation System	✓	Parking Sensors / Cameras Functioning	✓

Levels

Brakes Fluid	✓	Coolant Fluid	✓
--------------	---	---------------	---

Test Drive Inspection

Steering Wheel			
Steering Noise / Anomaly		✔	
Engine			
Engine Noise	✔	The Gears Scratch / Skip / Abnormal Operation	✔
Fume Quantity	✔	Power Loss	✔
Brake			
Brake System Anomaly		✔	
Clutch			
Clutch Functioning		✔	
General			
Test Driven Status		✔	
✔ <i>No troubles detected, good condition or correct tests, according to vehicle age and mileage</i>			
! <i>Damages or malfunction detected that requires repairs by the buyer</i>			
NA <i>Not applicable</i>			
= <i>Not tested</i>			

Disclaimer

Please also note the "UserGuide condition report", which shows the scope of the vehicle description.

[User Guide](#)