



# SEAT Leon

## Leon ST 1.4 TSI ACT Start&Stop

VIN NO VSSZZZ5FZHR069085

Registration Number FZHR069085



MOT Date

2026-07-01

Last Service

2025-02-19

Number of Owners

2

Last Service Mileage

132098

Number of Keys

2

First Registration Date

2017-06-20

Odometer Reading

144611 km

Country First Registered

Germany

### Inspection Report Summary

Customer	BCA Online	Report Number	P20250915113646
Inspection Date / Place	2025-09-15 / BCA Oberndorf	Cosmetic Grade	3

### Vehicle Summary

Vehicle Condition	Runner	VAT Type	Margin
Fuel Type	Petrol	Road Worthy	Yes
Colour	Grey	Engine Size (cc)	1395
Engine Size	1.4	No of Doors	5
Body Type	Stationwagon / Estate	Drive Train	Front
Seat Colour		No of Seats	5
Seat Covering Name		Seat Covering	Cloth/Synthetic Leather
Charging Cables		NEDC CO2 Rating (q/km)	114
Gearbox Type	Manual		

### Vehicle History & Documents

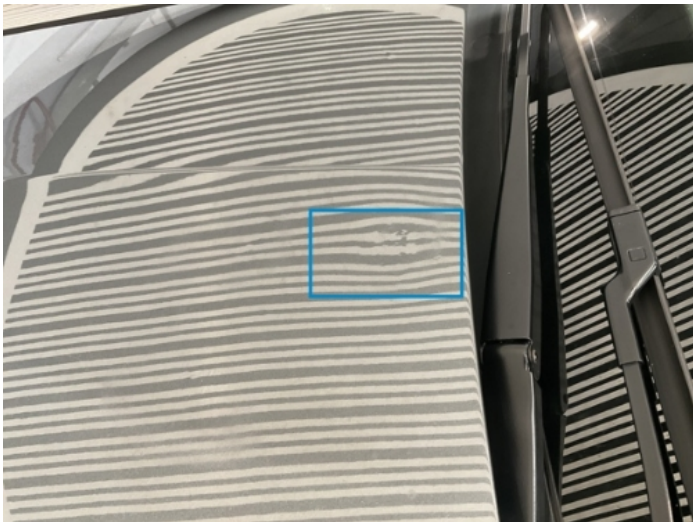
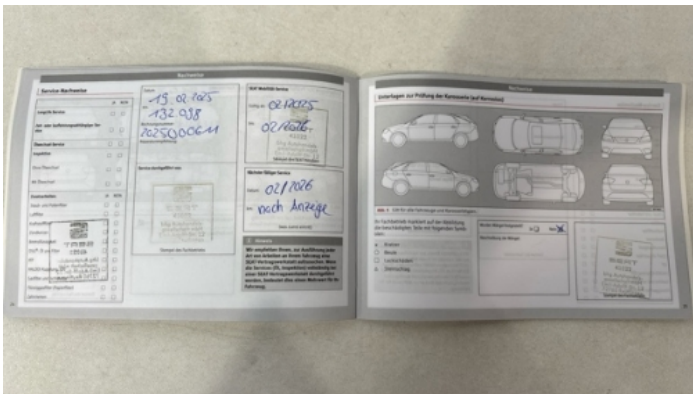
Service Book Available	Present	Next Service Mileage	km
Previous Usage		Imported	No
Manufacturer Warrenty			











Equipment

Tinted Glass	Airbag Status	AndroidAuto	AppleCarPlay
Bluetooth telephone interface	Front fog lamps	Heated wing mirrors	Remote central locking
Satellite navigation	Stability control	LED Headlamps	Rear parking sensors
USB Socket	Alloys wheels	Anti-lock braking	Auxiliary Socket
Cruise control	Front parking sensors	Remote adjusting wing mirrors	Roof rails
Split folding rear seats	Leather steering wheel	Radio	

Equipment Details

Air Conditioning	Dual Zone Climate Control	Alloy Wheel Size	18
Extra Wheel / Tyre Set	Winter Tyres - Alloy	Seat Heating	Front

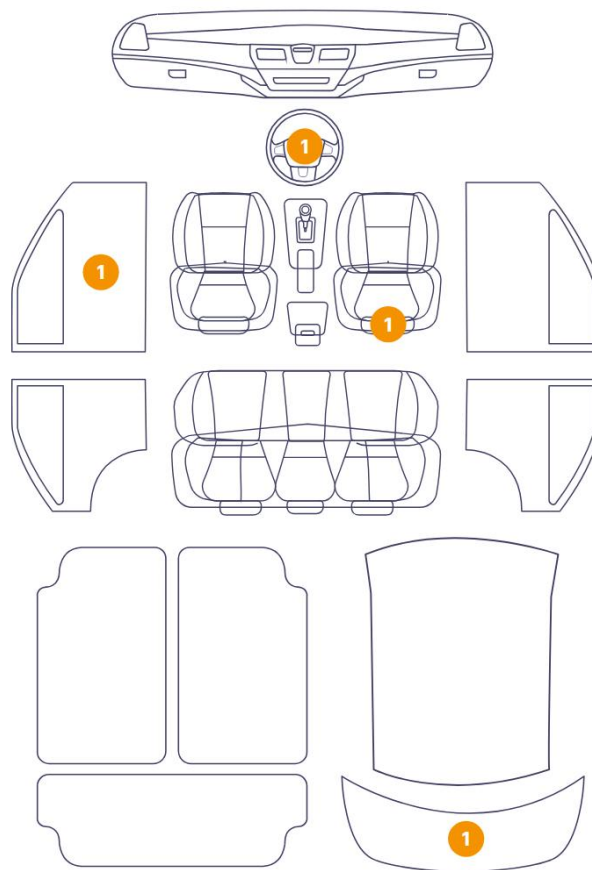
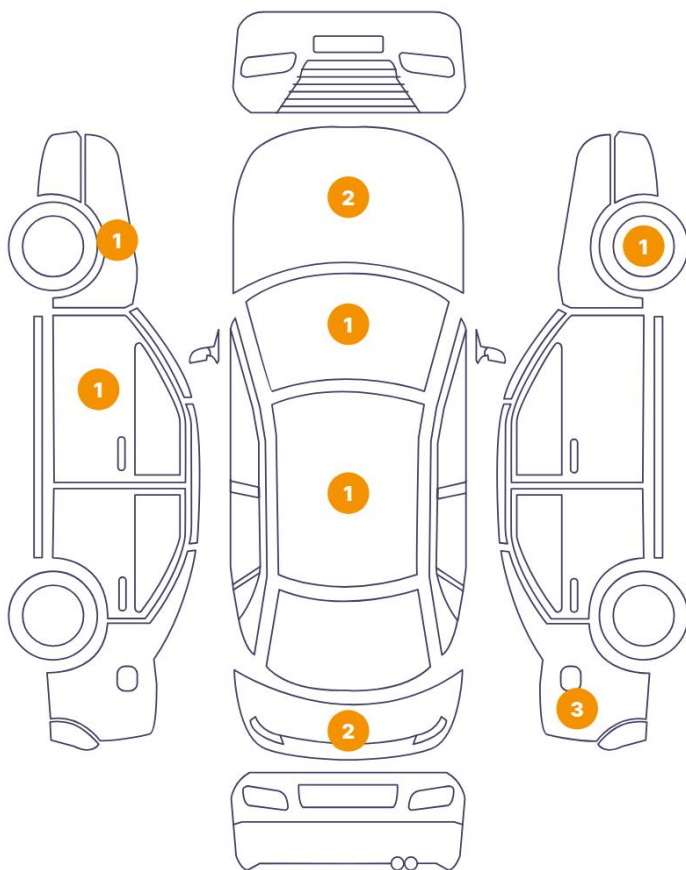
Wheels & Tyres

Right Front Tyre Depth	5	Left Front Tyre Depth	5
Right Rear Tyre Depth	5	Left Rear Tyre Depth	5
Extra Wheel - 1 Tyre Depth	5	Extra Wheel - 2 Tyre Depth	5
Extra Wheel - 3 Tyre Depth	7	Extra Wheel - 4 Tyre Depth	7

## Cosmetic Damage

12 Schäden

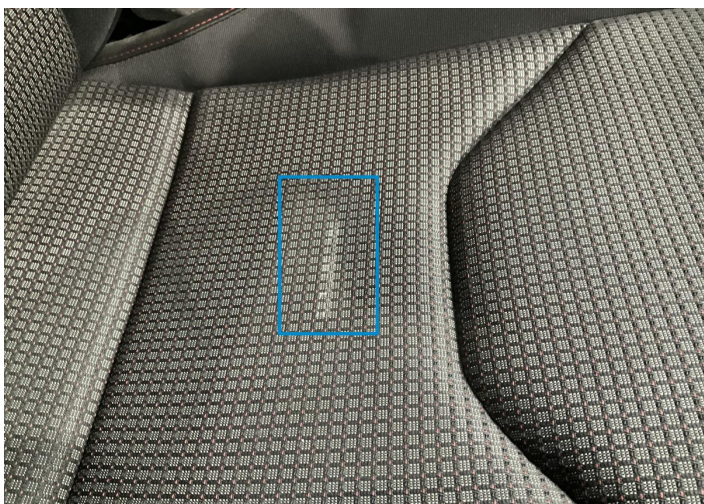
4 Schäden



Component	Damage	Comments
1 Seat / Front Right	Interior / Dirty	
2 Panel Filling / Front Left	Interior / Scratched	
3 Steering Wheel / Front	Interior / Scratched	
4 Tailgate Upholstery / Back	Interior / Scratched	
5 Tailgate	Paint / Poor Previous Repair	
6 Windshield / Front	Glass Break / Impact	
7 Hood	Paint / Poor Previous Repair	
8 Roof	Paint / Poor Previous Repair	
9 Door / Front Left	Bodywork / Dent / Dent	
10 Fender / Front Left	Paint / Stone Chip	
11 Rim / Front Right	Out of Bodywork / Scratch	
12 Side Panel / Back Right	Bodywork / Dent / Dent	

13	Side Panel / Back Right	Bodywork / Dent / Dent
14	Side Panel / Back Right	Paint / Scratch / Scuff
15	Tailgate	Bodywork / Dent / Dent
16	Hood	Bodywork / Dent / Dent





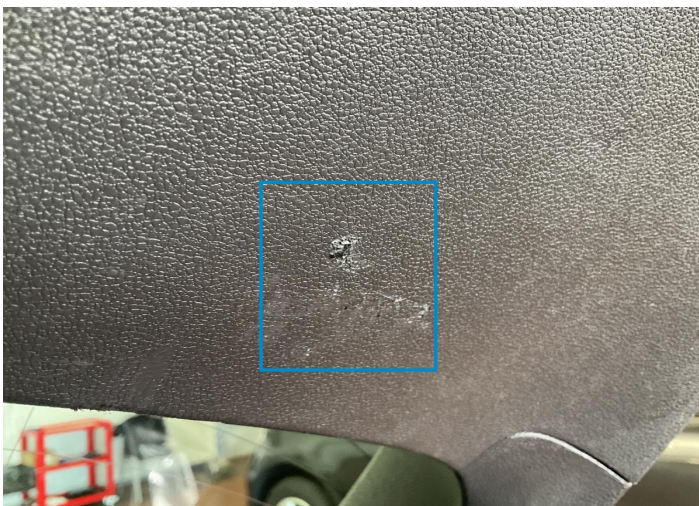
1. Seat / Front Right  
Interior / Dirty -



2. Panel Filling / Front Left  
Interior / Scratched -



3. Steering Wheel / Front  
Interior / Scratched -



4. Tailgate Upholstery / Back  
Interior / Scratched -



5. Tailgate  
Paint / Poor Previous Repair -



6. Windshield / Front  
Glass Break / Impact -





7. Hood  
Paint / Poor Previous Repair -



8. Roof  
Paint / Poor Previous Repair -



9. Door / Front Left  
Bodywork / Dent / Dent -



10. Fender / Front Left  
Paint / Stone Chip -

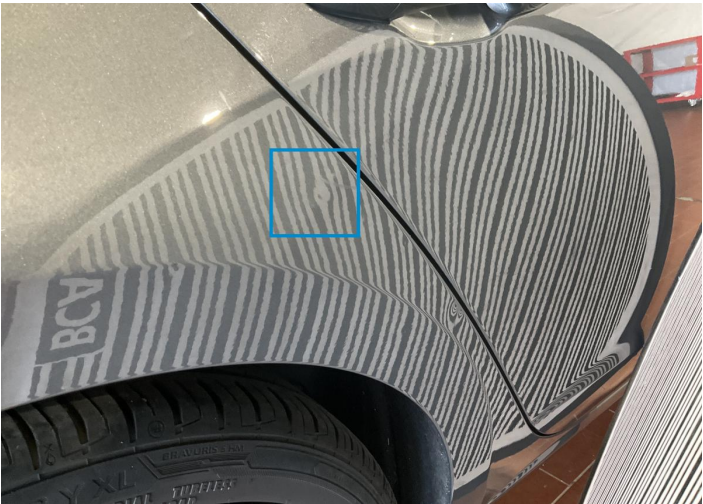


11. Rim / Front Right  
Out of Bodywork / Scratch -



12. Side Panel / Back Right  
Bodywork / Dent / Dent -

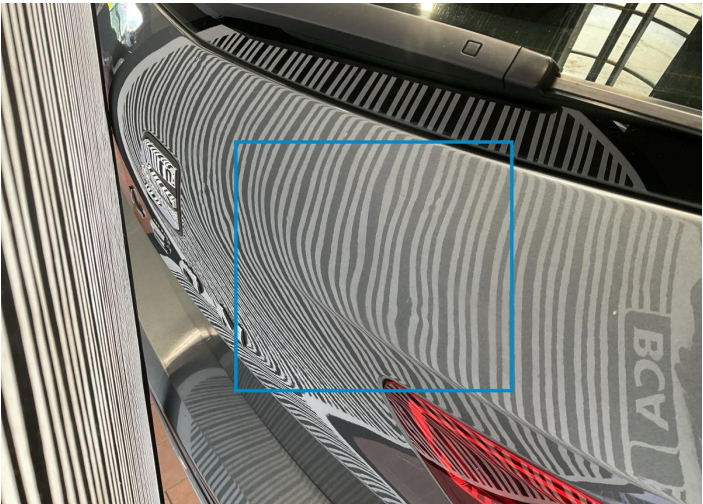




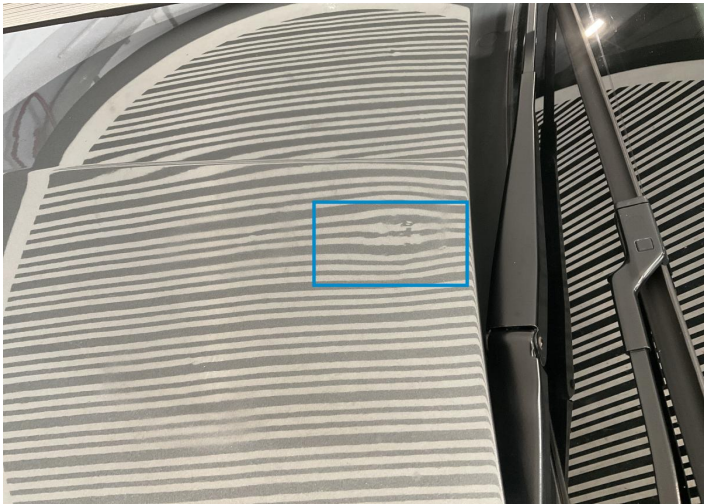
13. Side Panel / Back Right  
Bodywork / Dent / Dent -



14. Side Panel / Back Right  
Paint / Scratch / Scuff -



15. Tailgate  
Bodywork / Dent / Dent -



16. Hood  
Bodywork / Dent / Dent -



## Mechanical Condition

### Control Lights

Display Defect	✓	Service Light	✓
ABS Warning Light	✓	ESP Fault/Traction Control Malfunction Light	✓
Airbag Warning Light	✓	Oil Pressure Warning Light	✓
Brake Warning Light	✓	Power Steering Warning Light	✓
Alternator / Battery	✓	No Dashboard Lights	✓

### Equipments Test

Central Locking	✓	Main & Spare Keys Functioning	✓
Electric Windows	✓	Navigation System	✓
Audio Equipment	✓	Parking Sensors / Cameras Functioning	✓
AC / Heating System	✓		

### Engine

Engine Status / EML	✓	Engine Leak Visible	✓
Engine Starts	✓		

### Gearbox

Gear Box	✓
----------	---

### Levels

Brakes Fluid	✓	Coolant Fluid	✓
--------------	---	---------------	---

Test Drive Inspection

Steering Wheel			
Steering   Noise / Anomaly		✓	
Engine			
Engine Noise	✓	The Gears Scratch / Skip / Abnormal Operation	✓
Fume Quantity	✓	Power Loss	✓
Clutch			
Clutch Functioning		✓	
General			
Test Driven Status		Not Performed	
✓ No troubles detected, good condition or correct tests, according to vehicle age and mileage			
! Damages or malfunction detected that requires repairs by the buyer			
NA Not applicable			
☐ Not tested			

Disclaimer

Please also note the "UserGuide condition report", which shows the scope of the vehicle description.

[User Guide](#)