



SEAT Leon

Leon 2.0 TDI DPF

VIN NO VSSZZZ1PZBR028652
Registration Number PZBR028652



MOT Date	Number of Owners	Number of Keys	Odometer Reading
2027-06-01	2	2	190789 km
Last Service	Last Service Mileage	First Registration Date	Country First Registered
2025-06-27	188341	2010-11-17	Germany

Inspection Report Summary

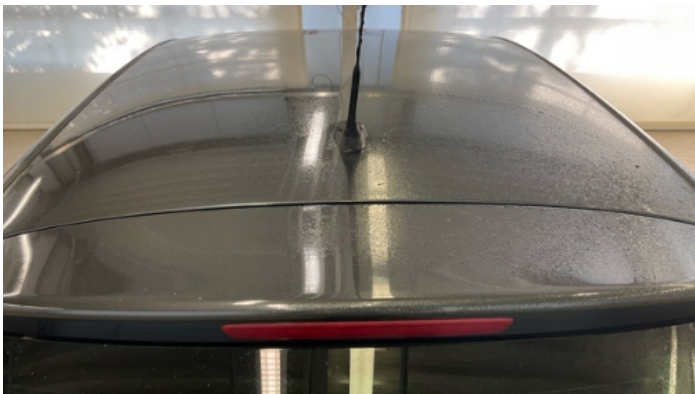
Customer	BCA Online	Report Number	P20251002105626
Inspection Date / Place	2025-10-02 / BCA Berlin	Cosmetic Grade	5

Vehicle Summary

Vehicle Condition	Runner	VAT Type	Margin
Fuel Type	Diesel	Road Worthy	Unknown
Colour	Grey	Engine Size (cc)	1968
Engine Size	2.0	No of Doors	5
Body Type	Sedan	Drive Train	Front
Seat Colour		No of Seats	5
Seat Covering Name		Seat Covering	Cloth
Charging Cables		NEDC CO2 Rating (q/km)	134
Gearbox Type	Manual		

Vehicle History & Documents

Service Book Available	Present	Next Service Mileage	km
Previous Usage		Imported	No
Manufacturer Warrenty			





Equipment

Tinted Glass	Trip Computer	Alloys wheels	Bluetooth telephone interface
Diesel particulate filter	Front fog lamps	Headlamp wash/wipe	Remote adjusting wing mirrors
Satellite navigation	CD Player	Electrically folding wing mirrors	Tow ball
Airbag Status	Anti-lock braking	Cruise control	Digital Radio
Front parking sensors	Heated wing mirrors	Remote central locking	Stability control
Central locking	Rear parking sensors		

Equipment Details

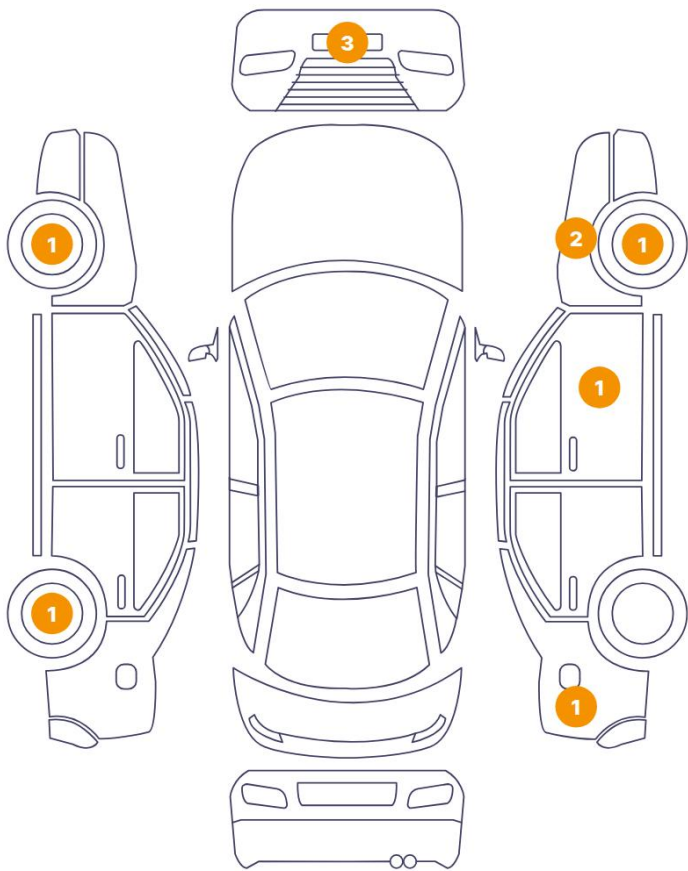
Tow Ball Type	Static	Air Conditioning	Dual Zone Climate Control
Alloy Wheel Size	18	Seat Heating	Front

Wheels & Tyres

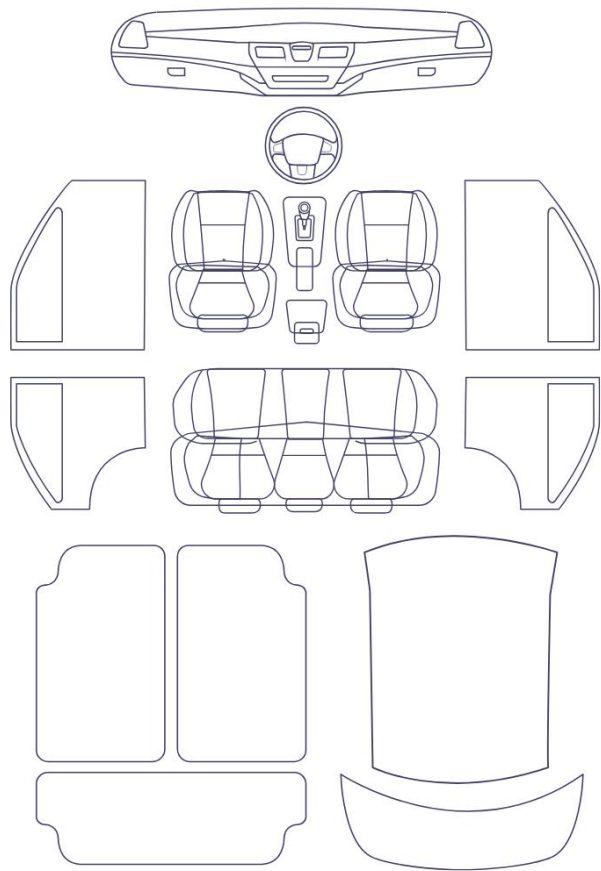
Right Front Tyre Depth	6	Left Front Tyre Depth	6
Right Rear Tyre Depth	6	Left Rear Tyre Depth	6

Cosmetic Damage

10 Schäden



0 Schäden



	Component	Damage	Comments
1	Bumper / Front	Paint / Scratch / Scuff	
2	Rim / Front Left	Out of Bodywork / Scratch	
3	Rim / Back Left	Out of Bodywork / Scratch	
4	Side Panel / Back Right	Paint / Scratch / Scuff	
5	Door / Front Right	Bodywork / Dent / Dent	
6	Rim / Front Right	Out of Bodywork / Scratch	
7	Fender / Front Right	Paint / Scratch / Scuff	
8	Fender / Front Right	Paint / Scratch / Scuff	
9	Bumper / Front	Bodywork / Breakage	
10	Bumper / Front	Bodywork / Breakage	



1. Bumper / Front
Paint / Scratch / Scuff -



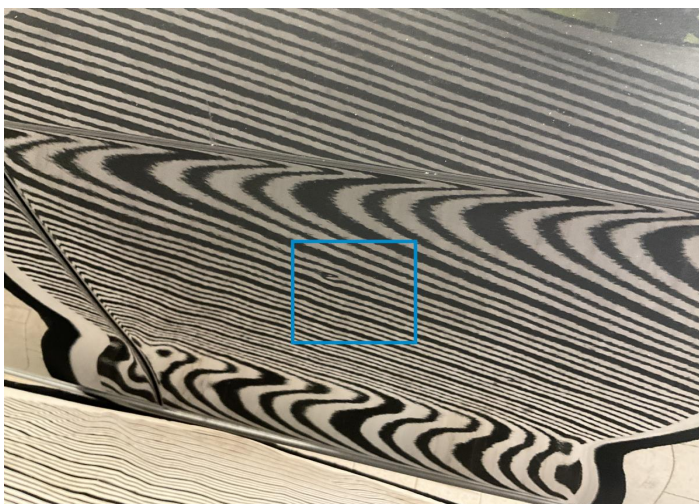
2. Rim / Front Left
Out of Bodywork / Scratch -



3. Rim / Back Left
Out of Bodywork / Scratch -



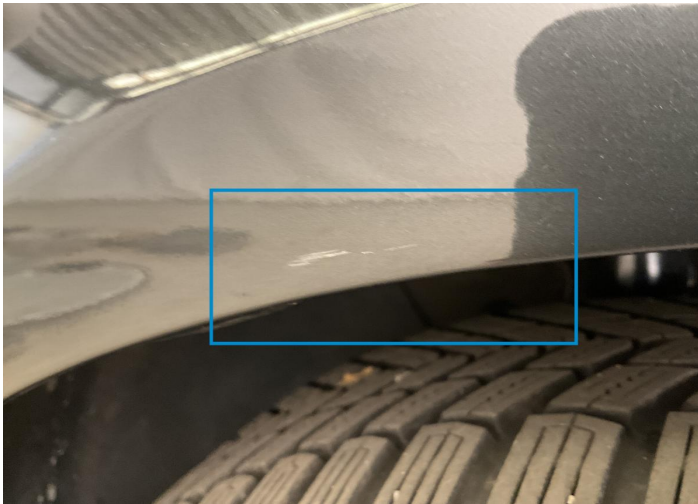
4. Side Panel / Back Right
Paint / Scratch / Scuff -



5. Door / Front Right
Bodywork / Dent / Dent -



6. Rim / Front Right
Out of Bodywork / Scratch -



7. Fender / Front Right
Paint / Scratch / Scuff -



8. Fender / Front Right
Paint / Scratch / Scuff -



9. Bumper / Front
Bodywork / Breakage -



10. Bumper / Front
Bodywork / Breakage -

Mechanical Condition

Control Lights

ABS Warning Light	✓	ESP Fault/Traction Control Malfunction Light	✓
Diesel Particulate Filter Light	✓	Airbag Warning Light	✓
Oil Pressure Warning Light	✓	Brake Warning Light	✓
Power Steering Warning Light	✓	Alternator / Battery	✓
No Dashboard Lights	✓	Display Defect	✓
Service Light	✓	Tire Pressure Monitoring System	✓

Engine

Engine Status / EML	✓	Engine Leak Visible	✓
Engine Starts	✓		

Gearbox

Gear Box	✓
----------	---

Equipments Test

Central Locking	✓	Main & Spare Keys Functioning	✓
Electric Windows	✓	Navigation System	✓
Audio Equipment	✓	Parking Sensors / Cameras Functioning	✓
AC / Heating System	✓	Other Equipments	✓

Levels

Brakes Fluid	✓	Coolant Fluid	✓
--------------	---	---------------	---

Test Drive Inspection

Brake			
Brake System Anomaly		✓	
Steering Wheel			
Steering Noise / Anomaly		✓	
Engine			
Engine Noise	✓	The Gears Scratch / Skip / Abnormal Operation	✓
Fume Quantity	✓	Power Loss	✓
Clutch			
Clutch Functioning		✓	
General			
Test Driven Status		✓	

- ✓ No troubles detected, good condition or correct tests, according to vehicle age and mileage
- ! Damages or malfunction detected that requires repairs by the buyer
- NA Not applicable
- ☐ Not tested

Disclaimer

Please also note the "UserGuide condition report", which shows the scope of the vehicle description.

[User Guide](#)