



# PEUGEOT 208

## 208 PureTech 100 S&S BVM6 Style

VIN NO VR3UPHNE2S5022957  
Registration Number HC658MR



MOT Date



Last Service



Number of Owners



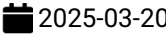
Last Service Mileage



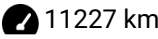
Number of Keys



First Registration Date



Odometer Reading



Country First Registered



### Inspection Report Summary

Customer	BCA Auto Encheres	Report Number	P20250930142524
Inspection Date / Place	2025-09-30 / BCA ANGOULEME	Cosmetic Grade	5

### Vehicle Summary

Vehicle Condition	Not Movable	VAT Type	Qualified - Normal Rate
Fuel Type	Petrol	Gearbox Type	Manual
Colour	Black	Engine Size (cc)	1199
Engine Size	1.2	No of Doors	5
Body Type	Hatchback	Drive Train	Front
Seat Colour		No of Seats	5
Charging Cables		WLTP CO2 Emissions	

### Vehicle History & Documents

Service Book Available	-	Next Service Mileage	km
Previous Usage	Normal Use	Imported	
Manufacturer Warranty			





Equipment

Central locking	Radio	Stability control	Front fog lamps
Power assisted steering	Electrically folding wing mirrors	Rear parking sensors	Cruise control
Front parking sensors	Satellite navigation		

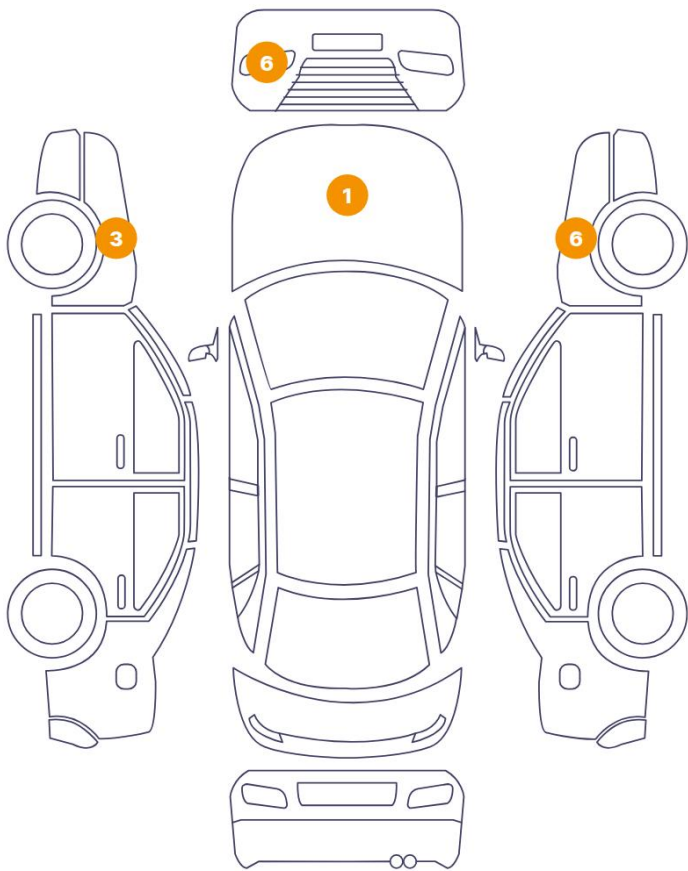
Equipment Details

Seat Heating	No	Air Conditioning	Yes
--------------	----	------------------	-----

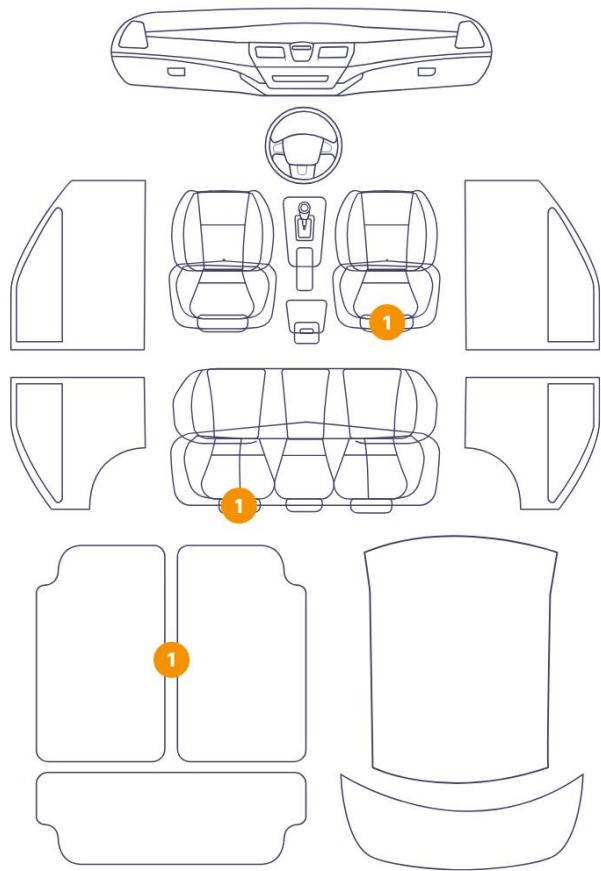


# Cosmetic Damage

16 Dommages



3 Dommages



Component		Damage	Comments
1	Floor Carpet	Interior / Dirty	
2	Seat / Back Left	Interior / Dirty	
3	Seat / Front Right	Interior / Dirty	
4	Front Light / Front Left	Missing Part	
5	Front Light / Front Left	Bodywork / Breakage	
6	Front Light / Front Left	Bodywork / Dent / Dent	
7	Front Light / Front Left	Bodywork / Dent / Deformation	
8	Front Light / Front Left	Glass Break	
9	Front Light / Front Left	Bodywork / Breakage / Hole	
10	Hood	Bodywork / Dent / Deformation	
11	Door Edge / Front Left	Bodywork / Dent / Deformation	
12	Door Edge / Front Left	Paint / Scratch / Scuff	

13	Door Edge / Front Left	Bodywork / Dent / Dent
14	Fender / Front Right	Paint / Scratch / Scuff
15	Fender / Front Right	Paint / Stone Chip
16	Fender / Front Right	Bodywork / Dent / Deformation
17	Fender / Front Right	Bodywork / Dent / Dent
18	Fender / Front Right	Missing Part
19	Fender / Front Right	Bodywork / Breakage



1. Floor Carpet  
Interior / Dirty -



2. Seat / Back Left  
Interior / Dirty -



3. Seat / Front Right  
Interior / Dirty -



4. Front Light / Front Left  
Missing Part -



5. Front Light / Front Left  
Bodywork / Breakage -



6. Front Light / Front Left  
Bodywork / Dent / Dent -





7. Front Light / Front Left  
Bodywork / Dent / Deformation -



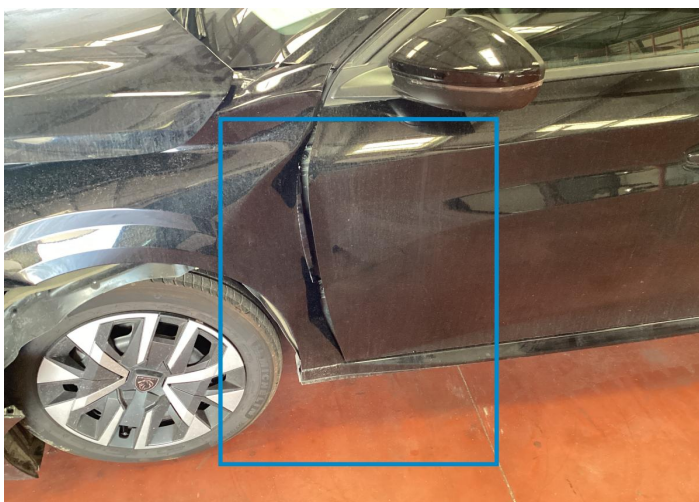
8. Front Light / Front Left  
Glass Break -



9. Front Light / Front Left  
Bodywork / Breakage / Hole -



10. Hood  
Bodywork / Dent / Deformation -



11. Door Edge / Front Left  
Bodywork / Dent / Deformation -



12. Door Edge / Front Left  
Paint / Scratch / Scuff -





13. Door Edge / Front Left  
Bodywork / Dent / Dent -



14. Fender / Front Right  
Paint / Scratch / Scuff -



15. Fender / Front Right  
Paint / Stone Chip -



16. Fender / Front Right  
Bodywork / Dent / Deformation -



17. Fender / Front Right  
Bodywork / Dent / Dent -



18. Fender / Front Right  
Missing Part -



19. Fender / Front Right  
Bodywork / Breakage -

Mechanical Condition


Tyres

Presence Anti-Theft Lock Nut 

 *No troubles detected, good condition or correct tests, according to vehicle age and mileage*

 *Damages or malfunction detected that requires repairs by the buyer*

 *Not applicable*

 *Not tested*

Disclaimer Section

*The test drive is done on a flat surface and lasts about 2 minutes. The driven distance is a minimum of 300 meters, including a u-turn, an acceleration and a braking phase. The highest speed achieved during this test is 50km/h. The mechanical check is a visual and dynamic diagnosis without any disassembly. We cannot guarantee any mechanical wear part.*