



PEUGEOT 2008

2008 BlueHDi 130 S&S EAT8 Allure Pack

VIN NO VR3UDYHZSMJ707560
Registration Number GB224TF



MOT Date	Number of Owners	Number of Keys	Odometer Reading
-	-	2	232609 km
Last Service	Last Service Mileage	First Registration Date	Country First Registered
-	-	2021-09-14	France

Inspection Report Summary

Customer	BCAauto Encheres	Report Number	P20251002125338
Inspection Date / Place	2025-10-02 / BCA INGRANDES	Cosmetic Grade	4

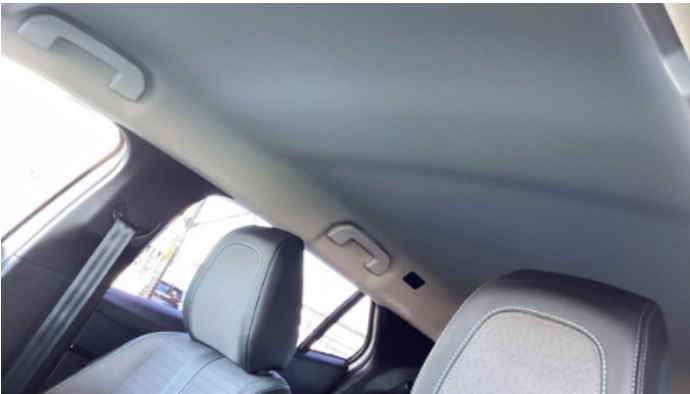
Vehicle Summary

Vehicle Condition	Non-Runner	VAT Type	Exempt Rate
Fuel Type	Diesel	Gearbox Type	Automatic
Colour	White	Engine Size (cc)	1499
Engine Size	1.5	No of Doors	5
Body Type	Stationwagon / Estate	Drive Train	Front
Seat Colour		No of Seats	5
Seat Covering Name		Seat Covering	Cloth
Charging Cables		WLTP CO2 Emissions	

Vehicle History & Documents

Service Book Available	Missing	Next Service Mileage	km
Previous Usage	Normal Use	Imported	
Manufacturer Warrenty			





Equipment

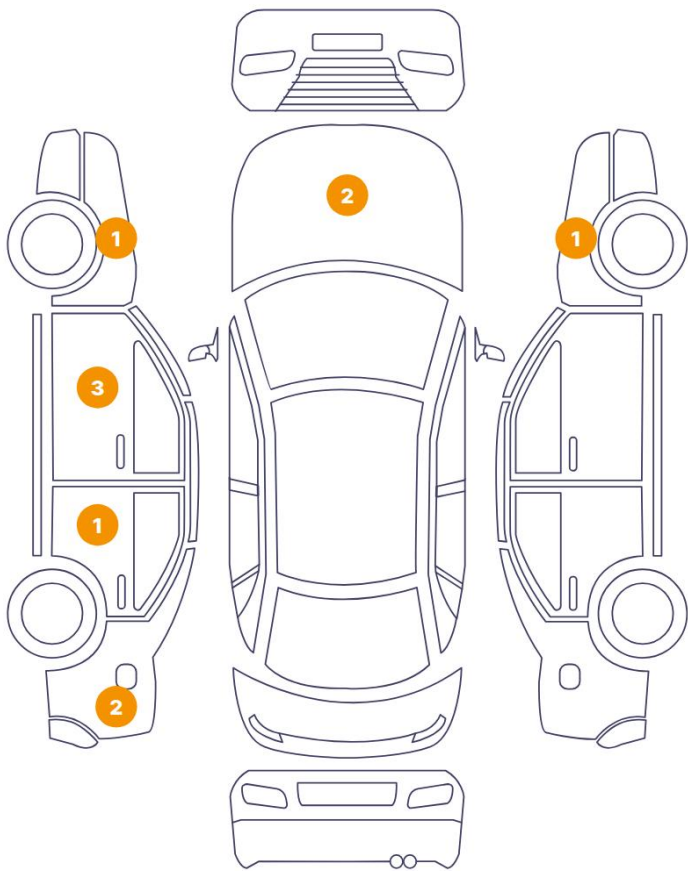
Central locking	Radio	Stability control	Front fog lamps
Satellite navigation	Electrically folding wing mirrors	Rear parking sensors	Cruise control
Power assisted steering			

Equipment Details

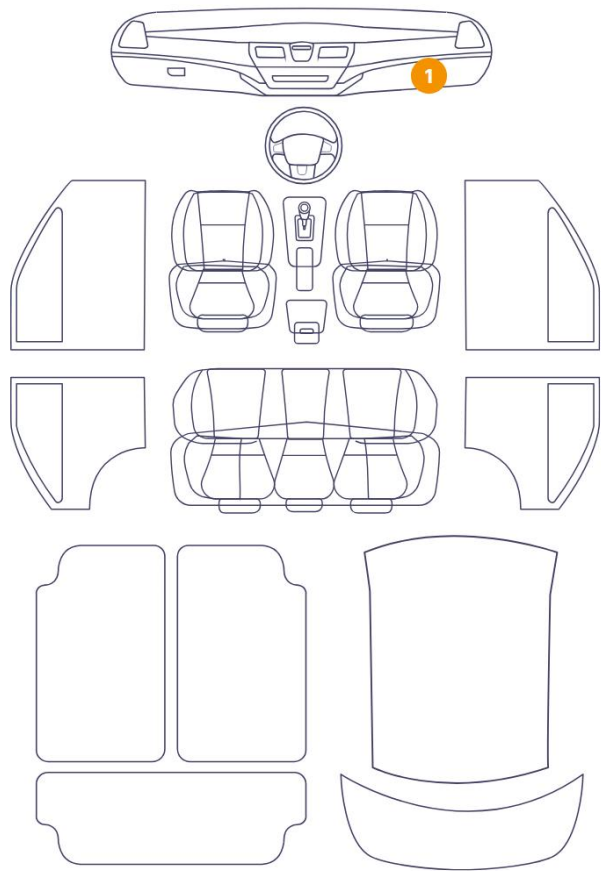
Seat Heating	No	Air Conditioning	Yes
Sunroof Type	Tilt/Slide Steel		

Cosmetic Damage

10 Dommages



1 Dommages



Component		Damage	Comments
1	Fender / Front Right	Bodywork / Dent / Deformation	
2	Hood	Paint / Scratch / Line	
3	Hood	Bodywork / Dent / Deformation	
4	Fender / Front Left	Bodywork / Dent / Deformation	
5	Mirror / Front Left	Missing Part	
6	Door / Front Left	Bodywork / Dent / Deformation	
7	Door / Front Left	Bodywork / Dent / Deformation	
8	Door / Back Left	Bodywork / Dent / Deformation	
9	Wing Expander / Back Left	Paint / Scratch / Line	
10	Fender / Back Left	Paint / Chipping	
11	Dashboard / Front	Interior / Missing	



1. Fender / Front Right
Bodywork / Dent / Deformation -



2. Hood
Paint / Scratch / Line -



3. Hood
Bodywork / Dent / Deformation -



4. Fender / Front Left
Bodywork / Dent / Deformation -



5. Mirror / Front Left
Missing Part -



6. Door / Front Left
Bodywork / Dent / Deformation -



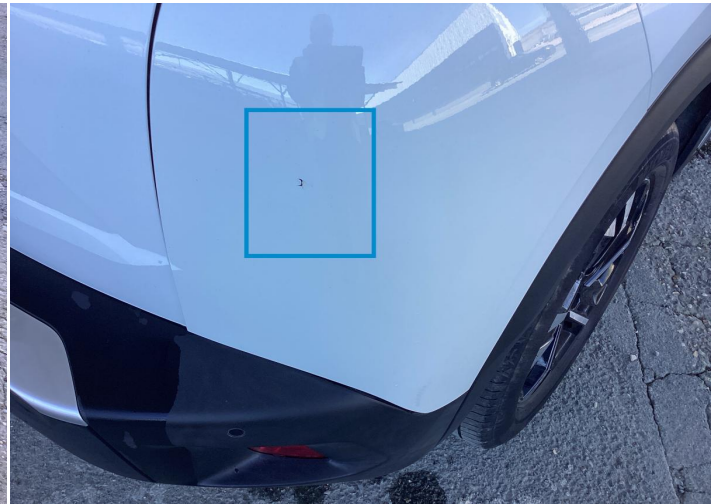
7. Door / Front Left
Bodywork / Dent / Deformation -



8. Door / Back Left
Bodywork / Dent / Deformation -



9. Wing Expander / Back Left
Paint / Scratch / Line -



10. Fender / Back Left
Paint / Chipping -



11. Dashboard / Front
Interior / Missing -

Mechanical Condition

Tyres

Presence Anti-Theft Lock Nut 

 *No troubles detected, good condition or correct tests, according to vehicle age and mileage*

 *Damages or malfunction detected that requires repairs by the buyer*

 *Not applicable*

 *Not tested*

Disclaimer Section

The test drive is done on a flat surface and lasts about 2 minutes. The driven distance is a minimum of 300 meters, including a u-turn, an acceleration and a braking phase. The highest speed achieved during this test is 50km/h. The mechanical check is a visual and dynamic diagnosis without any disassembly. We cannot guarantee any mechanical wear part.