



Expertise

Protocol number: 41334200
Order No. / Reference: 25036629
Inspection date: 2 Sept 2025

Manufacturer: Peugeot	Model: 308 SW BlueHDi 130 EAT8 Allure
VIN: VR3FCYHZTNY647639	



Vehicle details	
Manufacturer / Type / Model / Equipment	
Peugeot 308 SW BlueHDi 130 EAT8 Allure	
Vehicle Identification number	VR3FCYHZTNY647639
Mileage (Read)	62,647 km
First registration	21 Jun 2023
Number of holders	1
Power / Engine displacement	96 kw / 1,499 ccm
Fuel type / Cylinder	Diesel / 3
Gearbox / Number of gears	Automatic / 8
Type of drive	Front drive
Type of vehicle	Station wagon
Colour / colour code	Platinum Grau
Doors / Seats	5 / 5
Upholstery type	Cloth / leather combination
Colour of upholstery	Black-Anthracite
Vehicle with smoke odor	no



Vehicle details

Maintenance booklet / proof	digital proof / complete	Next maintenance in	25,600 km
Last maintenance on / at	06/2025 at 55,282 km		
Key is / should be	2 / 2	FZG documents	ZB#2 (B) was available (copy), ZB#1 (S) was not available
		Letter No.	GG058164
Previous damage / Accident	None detectable	Repainting	None detectable
Inspection conditions	sufficient	Lifting equipment / pit	yes
Test drive	Not performed	Engine function test	Performed
Manufacturer key number/ type code number	1889 / AEI 00038		
Emission standard	EURO6;WLTP;AP;PI/CI; M, N1 I	Fine dust sticker	
Permitted total weight	1,950 kg	Empty weight	

Tyres

Mounted tyres

#	Tyre size	Type of tyre	Manufacturer	Tread depth
1)	225/45 R17 94V	Summer tyres on Light alloy	Michelin	6mm / 6mm
2)	225/45 R17 94V	Summer tyres on Light alloy	Michelin	6mm / 6mm

Additional tyres

#	Tyre size	Type of tyre	Manufacturer	Tread depth
1)	205/55 R16 91H	Winter tyres on Light alloy	Goodyear	7mm / 7mm
2)	205/55 R16 91H	Winter tyres on Light alloy	Goodyear	7mm / 7mm

Replacement

Typ	Tyre size	Type of tyre	Manufacturer	Tread depth
	Tirefit	Expiration date 06/2028		

Legend: Tread depth information for tires on the left is in the first place, for tires on the right is in the second place on the axle in the direction of travel

Equipment

Standard equipment

- Storage compartment: illuminated glove compartment
- Active Safety Brake (Active during the day between 10 and 80 km/h, depending on the detected obstacle. The distance to the vehicle in front is monitored by a camera. If the vehicle in front or a pedestrian is approached too quickly, the driver is informed via a warning tone and a message in the driver information display. If there is a risk of collision, the braking system is prepared and, if necessary, emergency braking is initiated to minimize the consequences of a potential collision.)
- Turn signals with lane change tip function
- Brake light, third
- Digital instrument cluster with high-resolution 10" screen, adjustable and customizable
- Eco-LED headlights
- Front parking aid, acoustic and visual
- driving mode switch (Sport - Normal - Eco)
- Electric windows, front and rear (with comfort control and anti-pinch protection)
- Follow-me-home function (automatic)
- Windscreen made of laminated glass, sound-insulating
- Cruise control with speed limiter
- Cup holder in the center console
- Rear window wiper
- Infotainment system: PEUGEOT i-Connect Advanced (Infotainment system: up to 8 profiles and 2 smartphones simultaneously via Bluetooth, - Bi-tuner, 6 speakers (midrange and tweeter) - DAB+ digital radio reception - MP3 capability - Bluetooth hands-free system with audio streaming via Bluetooth - 2 USB-C ports in the front - Steering wheel and touchscreen operation - Real-time navigation "by TomTom Services" - Over-the-air map updates - OK PEUGEOT voice control for navigation, telephone, air conditioning, and media)
- LED daytime running lights
- Steering wheel: Leather steering wheel with shift paddles
- Light sensor
- Rear center armrest (with loading flap)
- Front center armrest
- Multifunctional touchscreen with 10" HD color screen (capacitive screen - multi-window capable with widgets or shortcuts)
- Multi-collision brake
- Fatigue warning
- Particle filter: FAP soot particle filter diesel
- Break warning
- Upholstery: fabric/faux leather
- Rain sensor
- Tire pressure monitoring system
- Wheels: 17" Calgary alloy wheels, two-tone (225/45 R17 94V tires)
- Side windows in row 2 and rear window more tinted
- ABS (anti-lock braking system) with electronic brake force distribution
- Airbags (6) (driver and front passenger airbags - passenger airbag deactivatable - front side airbags - front and rear curtain airbags)
- Exterior mirrors electrically adjustable, heated and foldable (with LED access lighting - integrated LED indicators)
- Exterior mirror caps in Perla Nera Black
- Hill start assist
- On-board computer
- Decorative inserts made of "Texa" fabric for door panels and dashboard
- tachometer
- Rear parking aid, acoustic and visual
- Electronic Stability Program (ESP) (with ASR (traction control))
- High beam assistant
- Electric parking brake
- Forward collision warning
- Luggage compartment blind
- Transmission: 8-speed automatic transmission EAT8
- Heated rear window
- Rear apron in black
- Interior mirror automatically dimming
- Map pockets on the front seat backrests
- Keyless system (keyless start system)
- Rear child safety lock
- Automatic air conditioning (2-zone), with activated carbon filter (separately adjustable for driver and front passenger)
- LED lighting in the front footwell
- LED ceiling lighting at the front (2 reading lights at the front and rear)
- LED rear lights
- Steering wheel: Small multifunction leather steering wheel flattened at the top and bottom
- Mirror Screen (Wireless transmission of multimedia content and apps from a compatible smartphone to the vehicle's touchscreen, via which the compatible functions and apps can be directly operated - CarPlay (for compatible Apple iPhone models) - Android Auto (for compatible smartphone models with Android operating system))
- Emergency braking assistant with automatic activation of hazard warning lights
- Peugeot i-Toggles (screen with configurable virtual buttons for the most important functions such as radio, air conditioning, navigation system, vehicle settings, telephone and connectivity)
- Wheels: Tire repair kit (compressor + puncture spray)
- Rear view camera with 180° surrounding view
- Power steering, electric
- Seats: Driver's seat height adjustable



- Seats: Passenger seat height adjustable
- Seats: Manual lumbar support for driver
- Seats: Rear seats (3 three-point safety belts - belt force limiters on the side seats - warning light and warning signal when the seat belt is unfastened - Isofix child seat mounts on the outer seats)
- Lane keeping assistant with steering intervention
- 12 volt socket
- Automatic stop & start
- Chrome-plated decorative exhaust tailpipes
- Immobiliser
- Central locking can be activated with remote control from inside

- Seats: Rear seat bench and backrest 40/20/40 split folding (Magic Flat system with control element in the trunk)
- Seats: Front seats (three-point safety belts with belt locks - pyrotechnic belt tensioners and electronically controlled belt force limiters - warning light and warning signal for driver and front passenger when seat belt is not fastened or loosened - safety-optimized headrests)
- Door locks automatically when starting
- Traffic sign recognition (with display of speed recommendation in the instrument cluster)
- High-gloss black trim strips on the side windows
- Adjustable intermediate loading floor

Extra equipment

- Heated windscreen
- Paint finish: Uni
- Package: Drive Assist Package (Active Safety Brake Plus - Rear Cross Traffic Alert - Rear Cross Traffic Alert - Automatic Cruise Control ACC, including Stop & Go function and recognition of stop signs, one-way street signs, and no-overtaking zone start/end - Blind Spot Assist with long range up to 75 meters in reverse)
- Luggage compartment partition net
- Steering wheel: heated steering wheel
- Package: Comfort Package (Ergonomic comfort seat on the driver's side with AGR (Action for Healthy Backs) seal of approval - Upholstery: Falgo fabric/leatherette in black with decorative stitching in mint green - Electric seat tilt adjustment - Extendable thigh support - Electric lumbar support on the driver and passenger side - Front seat heating)

Brief expert findings

Documents submitted	At the time of the inspection, the registration certificate Part 2 (letter) was available, but the registration certificate Part 1 (certificate) was not. (Copy)
VIN comparison	The vehicle identification number (VIN) was read from the vehicle and its conformity with the submitted documents was verified during the inspection by the undersigned.
Inspection	The inspection conditions were sufficient for the assessment of the vehicle. Lifting equipment and a pit were available for examining the vehicle.
Test drive	No test drive/maneuvering was carried out during the inspection of the vehicle.
Engine function test	An engine test run was performed.

Value reducing factors

No.	Component group	Description
1	Bonnet	Insulation lining - Damaged - Replace
2	Wheel / tyres	Alloy rim - rear right side - Scratched - Loss in value
3	Engine	Engine cover - Damaged - Replace
4	Engine	Engine (Lamdasonde) - Damaged - Loss in value
5	Bonnet	Bonnet (Verätzungen) - Paint defect - Lacquer
6	Side panel - rear right side	Side panel - Dent / paintcoat damage - Repair and paint
7	Roof	Roof (Verätzungen) - Paint defect - Lacquer
8	Door - rear right side	Door - Scratched - Repair and paint

Wear and tear

No.	Component group	Description
1	2nd wheel set	2 alloy rims (Nicht im Lieferumfang enthalten) - Scratched - No deduction
2	Vehicle glazing	Windscreen - Stone chips - No deduction



No.	Component group	Description
3	Boot lid / rear door	Boot lid - dent(s) - No deduction
4	Vehicle glazing	Windscreen - Stone chips - No deduction
5	Body	Body - Scratch(es) - No deduction

The vehicle shows signs of wear commensurate with its age and use.

Order/Scope of order

The order was placed to prepare a sales report for the vehicle described. This includes the following:

- Description of core relevant information about the vehicle
- Documentation of equipment features
(*Delivery by third-party service providers*)
- Documentation of damage, defects, missing parts
- Documentation of previous damage, unrepaired previous damage, repainting
- a brief visual or functional inspection of the equipment details if possible.
(*Functional tests of driver assistance systems are not included in the scope of services!*)
- a photo documentation of the vehicle

Basis for the order

This product is based on the Alphabet Fuhrpark GmbH guidelines for vehicle returns and valuations. The expert makes the explicit findings in each individual case objectively within the framework of the specified standards based on his or her own expertise.

The vehicle inspection takes place in a disassembled state.

Damage or defects that can only be detected during disassembly/diagnosis work or through advanced knowledge remain within the scope of the prognosis risk. An extended risk exists for concealed defects caused by fraudulent deception and not identifiable by the expert.

Damage or defects resulting from normal use or wear and tear of the vehicle will be accepted according to the applicable standard.

There was no explicit identification or monetary consideration of the expected features within the product.

Features which in their nature and severity slightly exceed normal use but do not constitute unacceptable damage will be documented and identified under signs of use if necessary.

Damage or defects which, according to the underlying standard, can no longer be attributed to normal use or wear and tear are listed in the product under "Depreciating Factors".

Depending on the product specification, a monetary ID can be provided. If this takes place, the costs can be 100% d or pro rata depending on the vehicle's age and mileage.

Previous damages

Apparently, no repaired previous damage could be found on the vehicle.

Comments

Weitere Schäden durch Marder möglich.



Figure 1: Diagonal front (left)



Figure 2: Diagonal front (right)



Figure 3: Diagonal rear (left)



Figure 4: Diagonal rear (right)



Figure 5: Interior - front



Figure 6: Interior - rear



Figure 7: Instrument cluster



Figure 8: Instrument panel



Figure 9: interior 360° view



Figure 10: Cargo area

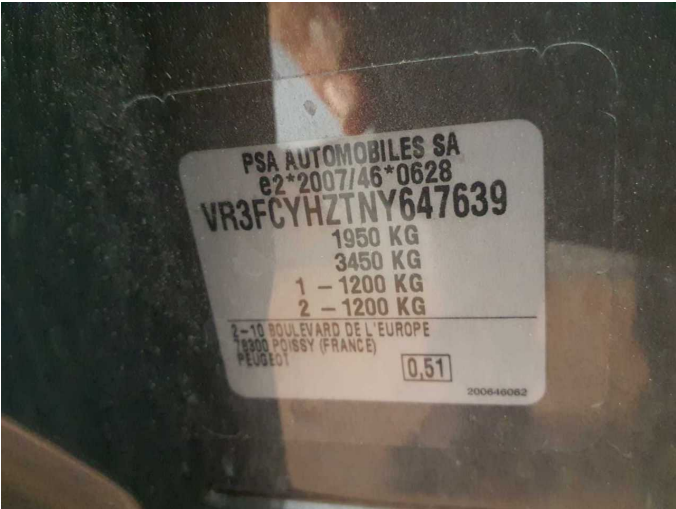


Figure 11: VIN



Figure 12: Mounted tyres



Figure 13: Documents



Figure 14: Documents



Figure 15: Additional tyres



Figure 16: Navigation



Figure 17: Misc.

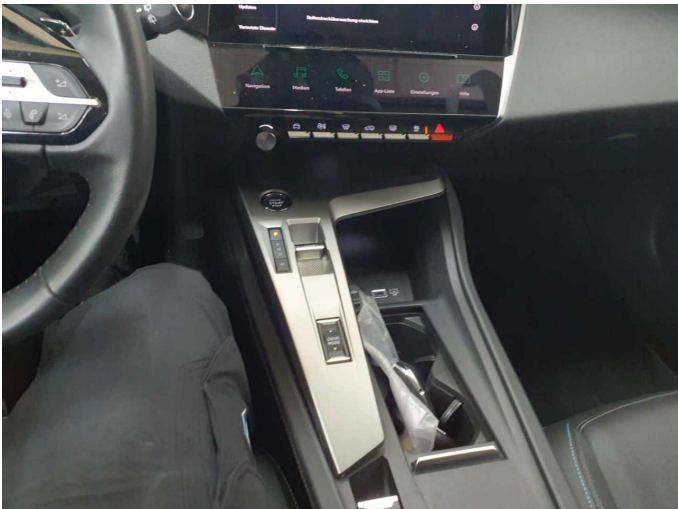


Figure 18: Misc.



Figure 19: Misc.

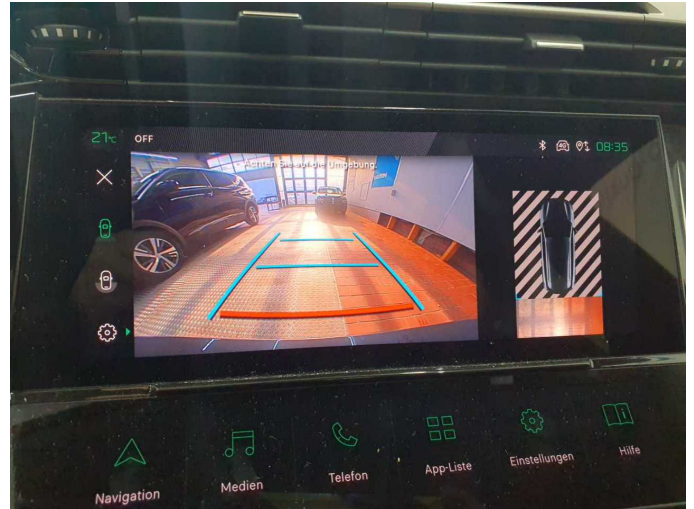


Figure 20: Misc.



Figure 21: Misc.



Figure 22: Misc.



Figure 23: Misc.



Figure 24: Misc.



Figure 25: Misc.



Figure 26: Misc.

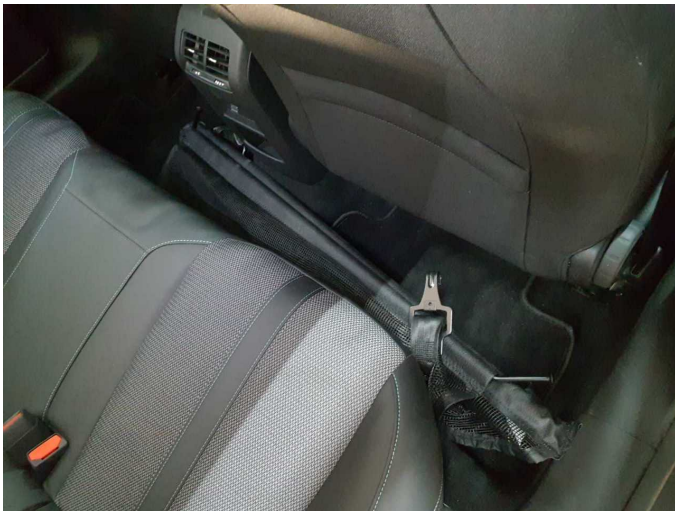


Figure 27: Misc.

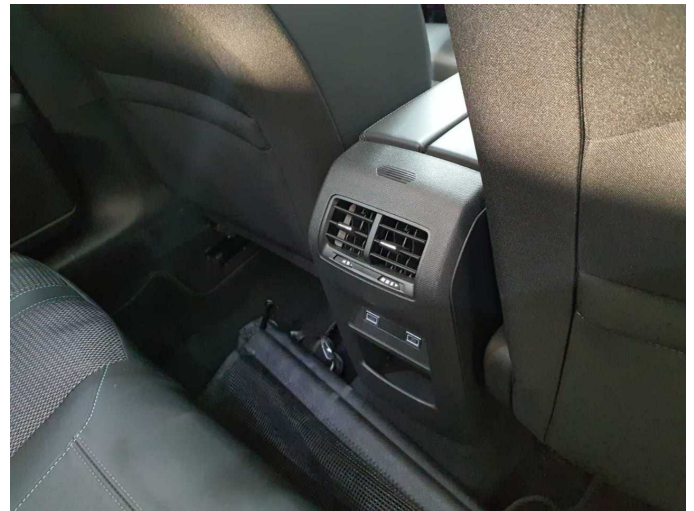


Figure 28: Misc.



Figure 29: Misc.



Damage 1: Bonnet: Insulation lining - Damaged - Replace



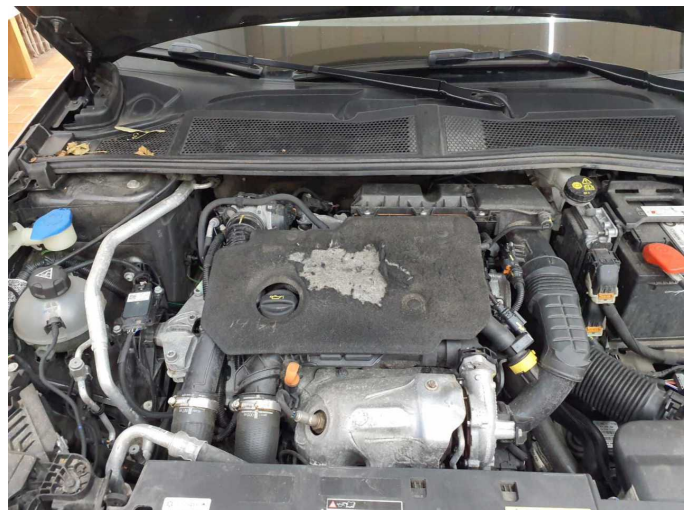
Damage 1: Bonnet: Insulation lining - Damaged - Replace



Damage 2: Wheel / tyres: Alloy rim - rear right side - Scratched - Loss in value



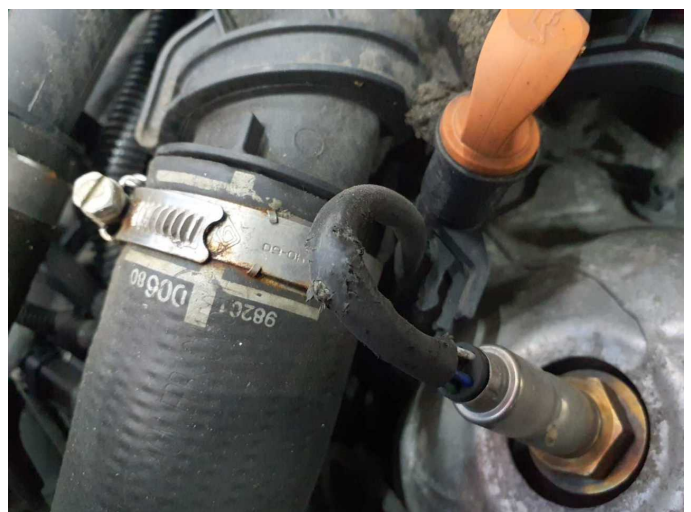
Damage 2: Wheel / tyres: Alloy rim - rear right side - Scratched - Loss in value



Damage 3: Engine: Engine cover - Damaged - Replace



Damage 3: Engine: Engine cover - Damaged - Replace



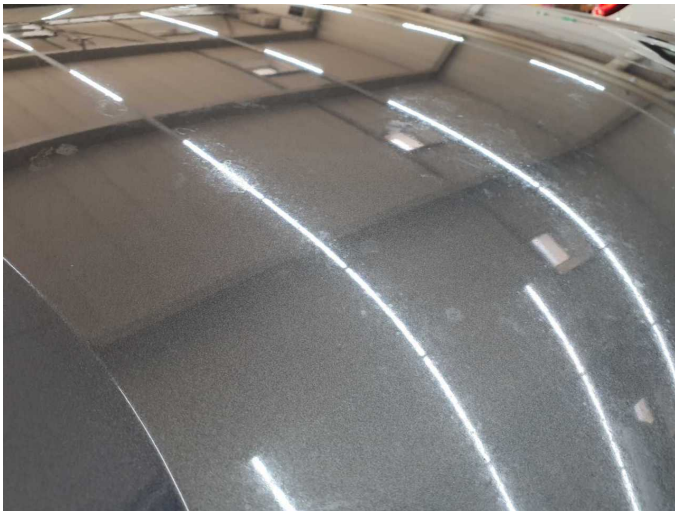
Damage 4: Engine: Engine (Lamdasonde) - Damaged - Loss in value



Damage 5: Bonnet: Bonnet (Verätzungen) - Paint defect - Lacquer



Damage 5: Bonnet: Bonnet (Verätzungen) - Paint defect - Lacquer



Damage 5: Bonnet: Bonnet (Verätzungen) - Paint defect - Lacquer



Damage 5: Bonnet: Bonnet (Verätzungen) - Paint defect - Lacquer



Damage 6: Side panel - rear right side: Side panel - Dent / paintcoat damage - Repair and paint



Damage 6: Side panel - rear right side: Side panel - Dent / paintcoat damage - Repair and paint



Damage 6: Side panel - rear right side: Side panel - Dent / paintcoat damage - Repair and paint



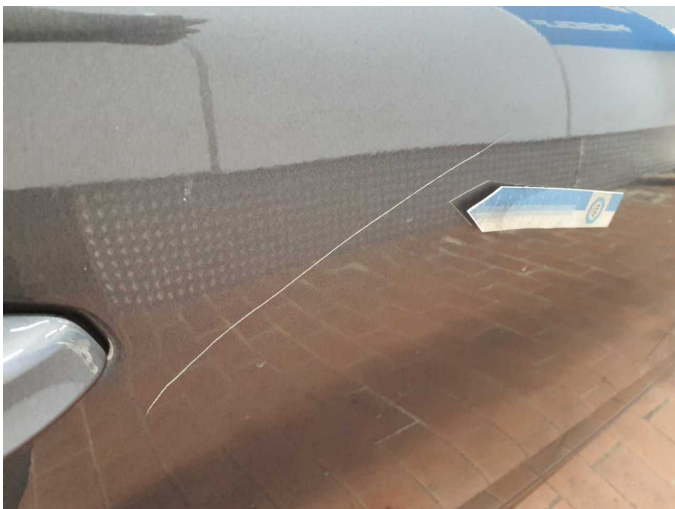
Damage 7: Roof: Roof (Verätzungen) - Paint defect - Lacquer



Damage 7: Roof: Roof (Verätzungen) - Paint defect - Lacquer



Damage 8: Door - rear right side: Door - Scratched - Repair and paint



Damage 8: Door - rear right side: Door - Scratched - Repair and paint



Wartungshistorie

(gemäß Auftraggeber Informationen)

Fahrgestellnummer: WF06XXWPG6LA34597

Hersteller / Modell: FORD FORD Transit Connect 220 L1 LKW S&S Trend

Datum	KM-Stand	Beschreibung
06.12.2024	54.197	Systemtest/Eigendiagnose
24.05.2024	48.421	AU
18.01.2024	44.242	Bremsinspektion vo + hi; Bremsklötze hinten; Bremsklötze vorne; Kraftstofffilter ern; Ladeluftschlauch ern; Luftfiltereinsatz ern; Motoröl b. Wartung; Ölfilter ern; Regelwartungsdienst; Systemtest/Eigendiagnose; Wartung Sonstiges
19.09.2023	39.250	Wartung Sonstiges
10.05.2022	23.407	AU; Bremsflüssigkeit; Bremsflüssigkeit ern; Motoröl b. Wartung; Ölfilter ern; Regelwartungsdienst; Wartung Sonstiges