



Expertise

Protocol number: 39804455
Order No. / Reference: 24806119
Inspection date: 20 May 2025

Manufacturer: Peugeot

Model: 508 SW BlueHDi 130 EAT8 Allure

VIN: VR3FCYHZRLY022255



Vehicle details	
Manufacturer / Type / Model / Equipment	
Peugeot 508 SW BlueHDi 130 EAT8 Allure	
Vehicle Identification number	VR3FCYHZRLY022255
Mileage (Read)	119,508 km
First registration	14 May 2020
Number of holders	1
Next periodical technical inspection	05/2025
(Report on hand)	
Power / Engine displacement	96 kw / 1,499 ccm
Fuel type / Cylinder	Diesel / 4
Gearbox / Number of gears	Automatic / 8
Type of drive	Front drive
Type of vehicle	Station wagon
Colour / colour code	Ultimate Rot Metallic
Doors / Seats	5 / 5
Upholstery type	Cloth / leather combination
Colour of upholstery	Light grey
Vehicle with smoke odor	no



Vehicle details

Maintenance booklet / proof	digital proof / incomplete	Next maintenance in	-1,700 km
Last maintenance on / at	08/2024 at 97,855 km		
Key is / should be	2 / 2	FZG documents	ZB#2 (B) was available (copy), ZB#1 (S) was not available
		Letter No.	FR229330
Previous damage / Accident	None detectable	Repainting	None detectable
Inspection conditions	Sufficient	Lifting equipment / pit	yes
Test drive	Not performed	Engine function test	Performed
Manufacturer key number/ type code number	1889 / AAY 00032		
Emission standard	EURO6;WLTP;DG;PI/CI; M, N1 I	Fine dust sticker	
Permitted total weight	2,043 kg	Empty weight	

Tyres

Mounted tyres

#	Tyre size	Type of tyre	Manufacturer	Tread depth
1)	215/55 R17 98W	Summer tyres on Light alloy	Michelin	6mm / 6mm
2)	215/55 R17 98W	Summer tyres on Light alloy	Michelin	6mm / 5mm

Additional tyres

#	Tyre size	Type of tyre	Manufacturer	Tread depth
1)	215/60 R16 99H	Winter tyres on Light alloy	Michelin	5mm / 5mm
2)	215/60 R16 99H	Winter tyres on Light alloy	Michelin	7mm / 7mm

Replacement

Typ	Tyre size	Type of tyre	Manufacturer	Tread depth
	Tirefit	Expiration date 11/2024		

Legend: Tread depth information for tires on the left is in the first place, for tires on the right is in the second place on the axle in the direction of travel

Equipment

Standard equipment

- ABS (anti-lock braking system)
- Airbag for driver and front passenger
- Airbag: Curtain airbags front and rear
- Exterior mirrors electrically adjustable, heated and foldable
- Hill start assist
- Brake light, third
- aluminum roof rails
- Digital instrument cluster with high-resolution 12.3" screen, adjustable and customizable
- Rear parking aid, acoustic and visual
- Misfueling protection
- High beam assistant
- Follow-me-home function (automatic)
- Luggage compartment blind
- Transmission: 8-speed automatic transmission EAT8
- Belts: 3-point safety belts on all seats
- Heated rear window
- Interior mirror automatically dimming
- Rear child safety lock
- Automatic climate control (2-zone)
- headrests height adjustable
- LED ambient lighting in the front headliner, in the footwell and on the front center armrest
- LED ceiling lighting at the front
- 17" "Merion" alloy wheels (with 215/55 R 17 98W tires)
- Steering wheel: multifunction leather steering wheel
- Light sensor
- Multifunctional touchscreen
- Fatigue warning
- Navigation system: 3D navigation system NAC (3D navigation including representation of buildings and monuments in 3D - voice recognition for navigation, telephone and media - real-time traffic information - operation via the touchscreen - PEUGEOT Connect Box - Mirror Screen - transfer of the map to the digital instrument cluster - 2 USB ports and AUX input)
- Particle filter: FAP soot particle filter diesel
- Upholstery: fabric/synthetic leather
- Rain sensor
- Tire pressure monitoring system
- Wheels: Tire repair kit (compressor + puncture spray)
- Shift paddles on the steering wheel
- Seats: Passenger seat height adjustable
- Seats: Driver's seat height adjustable
- lane keeping assistant with steering intervention
- Stop&Start system
- Immobiliser
- Active Safety Brake Plus
- Airbag: side airbag
- Active Blind Spot Assist
- Exterior mirrors painted in body color
- On-board computer
- Chrome trim on the side windows
- Decorative inlays in carbon look
- tachometer
- EBV (Electronic Brake Force Distribution)
- Electronic Stability Program (ESP)
- Electric windows front and rear
- Electric parking brake
- Floor mats front and rear
- Luggage compartment partition net
- Basic equipment 508 (indicator lights with lane change function - round disc brakes - break warning - automatic door locking when starting off - warning triangle - driving mode switch ECO/Normal/ Sport - cup holders in the center console - map pockets on the front seat backrests - illuminated vanity mirrors for driver and front passenger - illuminated glove compartment - front center armrest with illuminated storage compartment - forward collision warning)
- LED daytime running lights
- Steering wheel: Small multifunction steering wheel flattened at the top and bottom
- Rear center armrest with loading flap
- Multimedia: Mirror Screen (transfer of multimedia content and apps from a compatible smartphone to the vehicle's touchscreen, via which the compatible functions and apps can be operated directly - CarPlay (for compatible iPhone models from Apple) - Android Auto (for compatible smartphone models with Android operating system))
- Emergency braking assistant
- Package: City (front parking aid, rear view camera with 180° surrounding view)
- Peugeot Connect Box (with the free telematics services Peugeot Connect SOS and Peugeot Connect Assistance - GPS module - Integrated European SIM card - Loudspeaker and microphone - Emergency battery)
- Rear seat backrest split and automatically foldable (40/60)
- Power steering, electric
- Seats: Ergonomic comfort seats with AGR seal of approval (extendable thigh support - electric lumbar support - electric seat inclination adjustment)
- Traffic sign recognition
- Central locking can be activated from the inside with radio remote control



Extra equipment

- Automatic cruise control ACC with STOP & GO function (including lane positioning assistant)
- Radio accessories: Digital radio reception DAB+
- Seats: Heated front seats (adjustable in 3 levels)
- Paintwork: Special paintwork Ultimate Red
- Package: Full-LED package (Full-LED headlights with headlight range adjustment - Full-LED taillights with 3D effect - LED indicators with static cornering light)

Brief expert findings

Documents submitted	At the time of the inspection, the registration certificate part 2 (letter) was available, but the registration certificate part 1 (certificate) was not available. (Copy)
VIN comparison	The vehicle identification number (VIN) was read and the undersigned verified that it matched the documents submitted during the inspection.
Inspection	The inspection conditions were sufficient for the assessment of the vehicle. Lifting equipment and a pit were available for examining the vehicle.
Test drive	No test drive/maneuvering was carried out during the inspection of the vehicle.
Engine function test	An engine test run was performed.

Value reducing factors

No.	Component group	Description
1	Equipment	Tirefit filler - Expired - Replace
2	Tail light	Tail lamp - right side - Broken / torn - Replace
3	Misc.	Inspection / maintenance - Due - Perform
4	Door - rear left side	Door - Dent / paintcoat damage - Repair and paint

Wear and tear

No.	Component group	Description
1	Front bumper	Bumper with Parktronic - Scratch(es) - No deduction

The vehicle shows signs of wear commensurate with its age and use.

Missing parts

Description

Documents - Owner's manual

Order/Scope of order

The order was placed to prepare a sales report for the vehicle described. This includes the following:

- Description of core relevant information about the vehicle
- Documentation of equipment features
(Delivery by third-party service providers)
- Documentation of damage, defects, missing parts
- Documentation of previous damage, unrepaired previous damage, repainting
- a brief visual or functional inspection of the equipment details if possible.
(Functional tests of driver assistance systems are not included in the scope of services!)
- a photo documentation of the vehicle



Basis for the order

This product is based on the Alphabet Fuhrpark GmbH guidelines for vehicle returns and valuations. The expert makes the explicit findings in each individual case objectively within the framework of the specified standards based on his or her own expertise.

The vehicle inspection takes place in a disassembled state.

Damage or defects that can only be detected during disassembly/diagnosis work or through advanced knowledge remain within the scope of the prognosis risk. An extended risk exists for concealed defects caused by fraudulent deception and not identifiable by the expert.

Damage or defects resulting from normal use or wear and tear of the vehicle will be accepted according to the applicable standard.

There was no explicit identification or monetary consideration of the expected features within the product.

Features which in their nature and severity slightly exceed normal use but do not constitute unacceptable damage will be documented and identified under signs of use if necessary.

Damage or defects which, according to the underlying standard, can no longer be attributed to normal use or wear and tear are listed in the product under "Depreciating Factors".

Depending on the product specification, a monetary ID can be provided. If this takes place, the costs can be 100% d or pro rata depending on the vehicle's age and mileage.

Previous damages

Apparently, no repaired previous damage could be found on the vehicle.

Comments

- Erhöhte Lackschichtstärke am gesamten Fahrzeug ohne erkennbaren Vorschaden
- Winterradsatz ist kein Bestandteil des Auslieferungsumfangs



Figure 1: Diagonal front (left)



Figure 2: Diagonal front (right)



Figure 3: Diagonal rear (left)



Figure 4: Diagonal rear (right)



Figure 5: Interior - front



Figure 6: Interior - rear



Figure 7: Instrument cluster



Figure 8: Instrument panel



Figure 9: interior 360° view



Figure 10: Cargo area

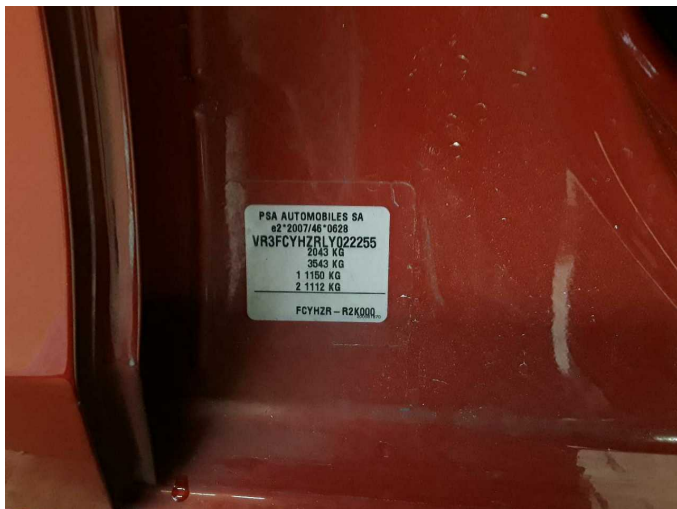


Figure 11: VIN



Figure 12: Mounted tyres



Figure 13: Documents

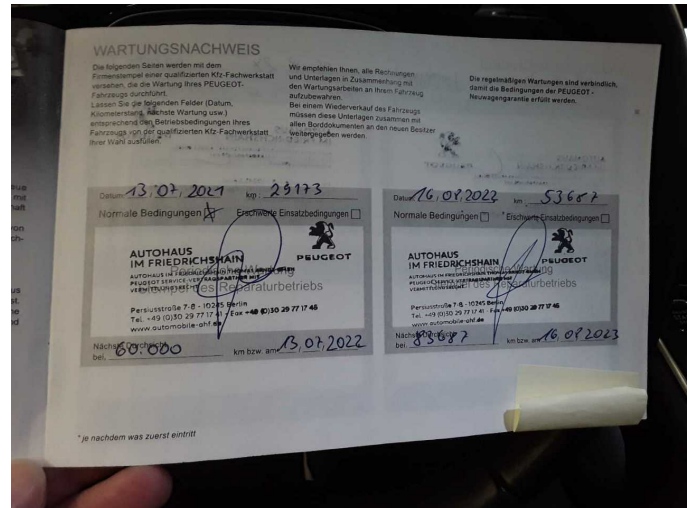


Figure 14: Documents



Figure 15: Documents

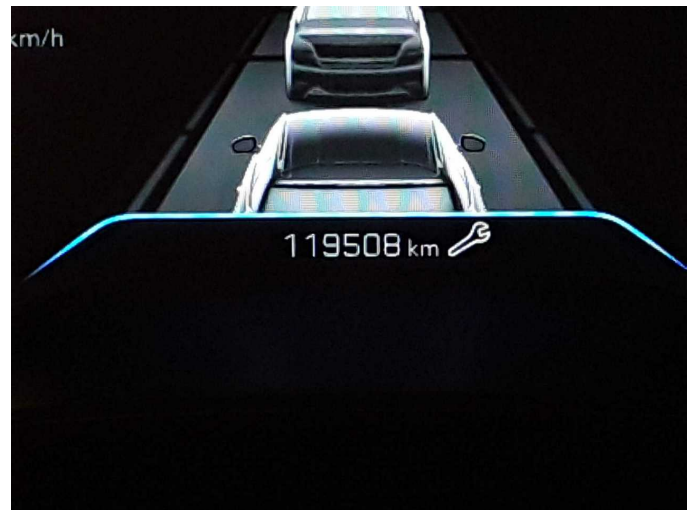


Figure 16: Documents



Figure 17: Documents



Figure 18: Additional tyres

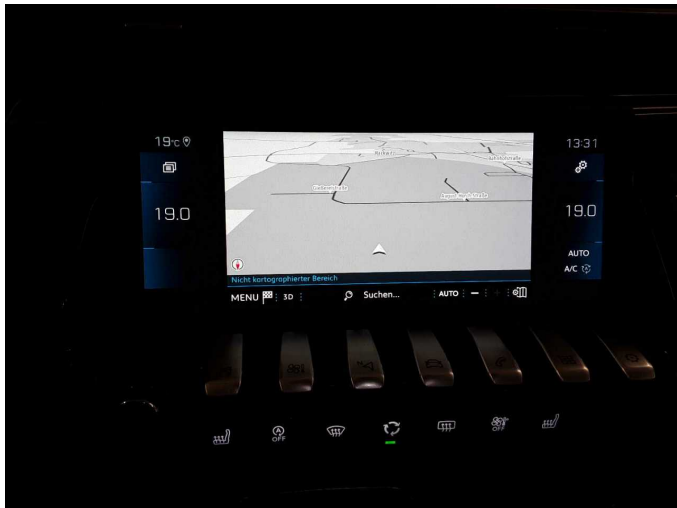


Figure 19: Navigation



Figure 20: Misc.



Figure 21: Misc.

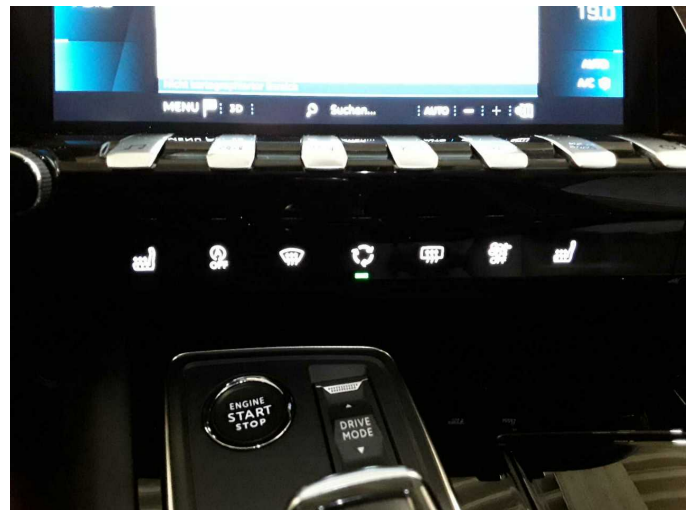


Figure 22: Misc.

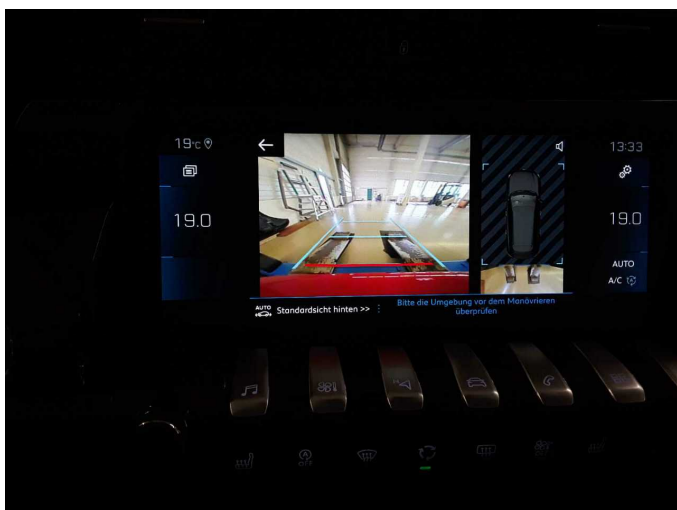


Figure 23: Misc.

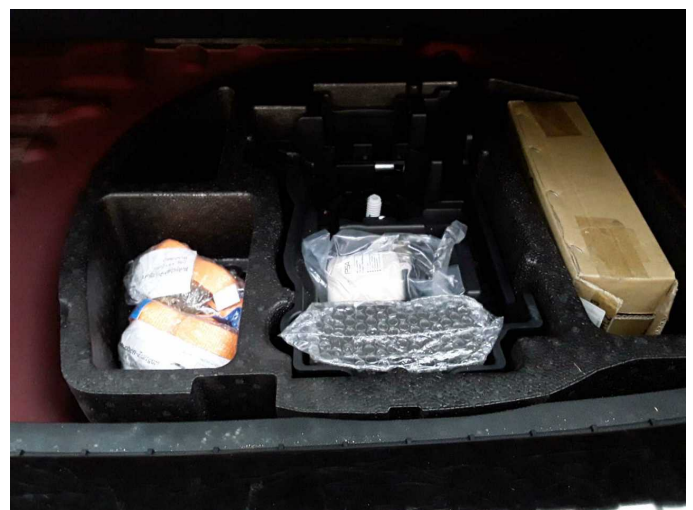


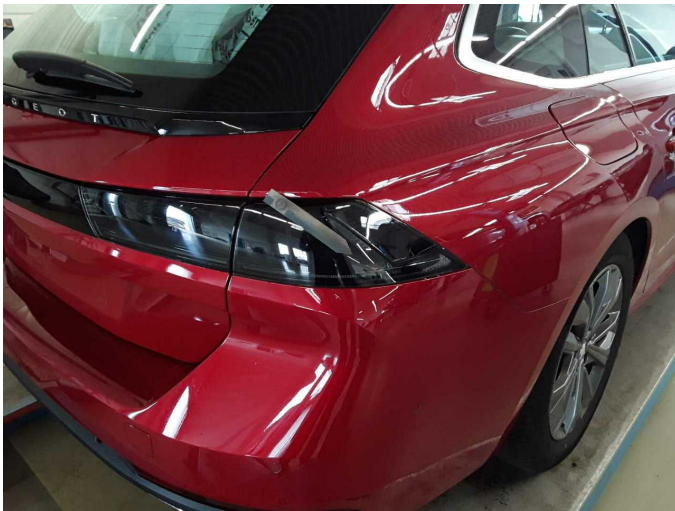
Figure 24: Misc.



Figure 25: Misc.



Damage 1: Equipment: Tirefit filler - Expired - Replace



Damage 2: Tail light: Tail lamp - right side - Broken / torn - Replace



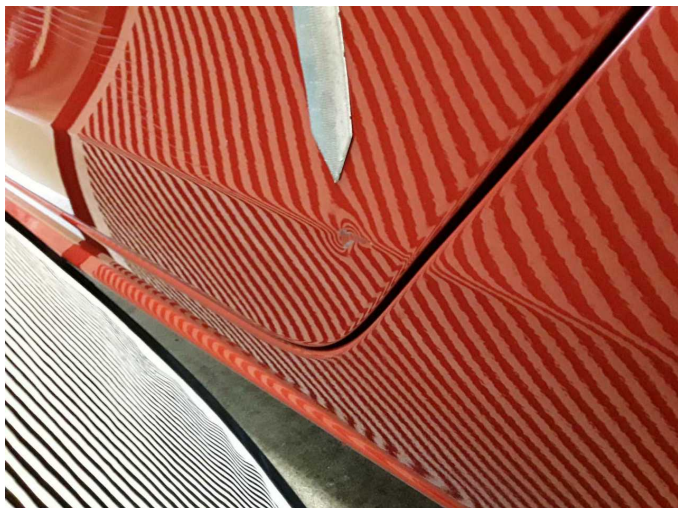
Damage 2: Tail light: Tail lamp - right side - Broken / torn - Replace



Damage 3: Misc.: Inspection / maintenance - Due - Perform



Damage 4: Door - rear left side: Door - Dent / paintcoat damage - Repair and paint



Damage 4: Door - rear left side: Door - Dent / paintcoat damage - Repair and paint