



# CITROEN C4

## C4 Picasso HDi 150 FAP Millenium BMP6

VIN NO VF7UDRHB8BJ747173  
Registration Number BT366YJ



MOT Date	Number of Owners	Number of Keys	Odometer Reading
-	-	2	282725 km
Last Service	Last Service Mileage	First Registration Date	Country First Registered
-	-	2011-09-13	-

### Inspection Report Summary

Customer	BCAuto Encheres	Report Number	P20250925071405
Inspection Date / Place	2025-09-25 / BCA NANTES	Cosmetic Grade	5

### Vehicle Summary

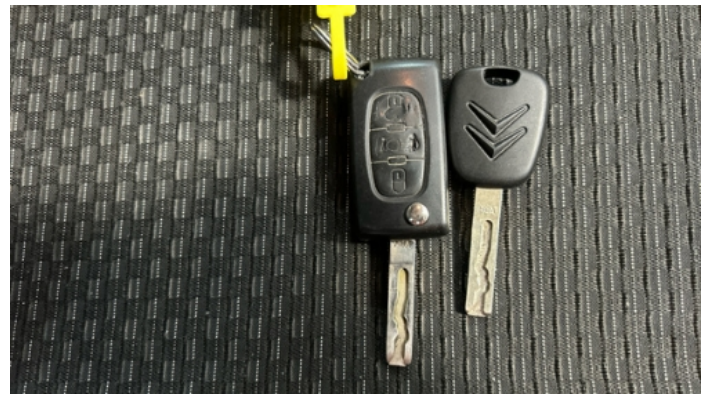
Vehicle Condition	Non-Runner	VAT Type	Exempt Rate
Fuel Type	Diesel	Gearbox Type	Automatic
Colour	Red	Engine Size (cc)	1997
Engine Size	2.0	No of Doors	5
Body Type	Sedan	Drive Train	Front
Seat Colour		No of Seats	5
Charging Cables		NEDC CO2 Rating (q/km)	137

### Vehicle History & Documents

Service Book Available	Missing	Next Service Mileage	km
Previous Usage	Normal Use	Imported	No
Manufacturer Warrenty			







Equipment

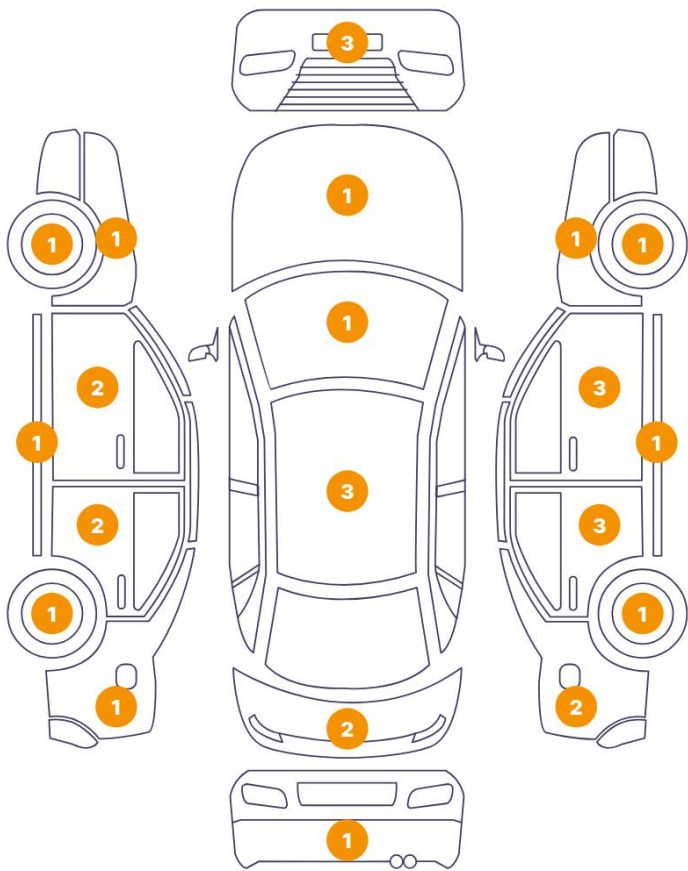
Central locking	Radio	Alloys wheels	Cruise control
Power assisted steering	Electrically folding wing mirrors	Rear parking sensors	Stability control
Front fog lamps	Satellite navigation		

Equipment Details

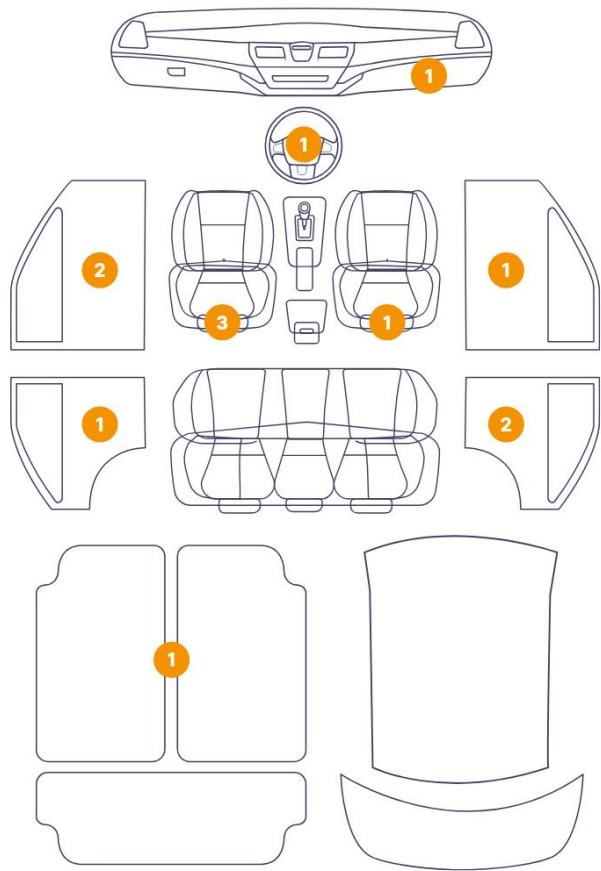
Seat Heating	No	Air Conditioning	Yes
Sunroof Type	Tilt/Slide Steel		

Cosmetic Damage

32 Dommages



13 Dommages

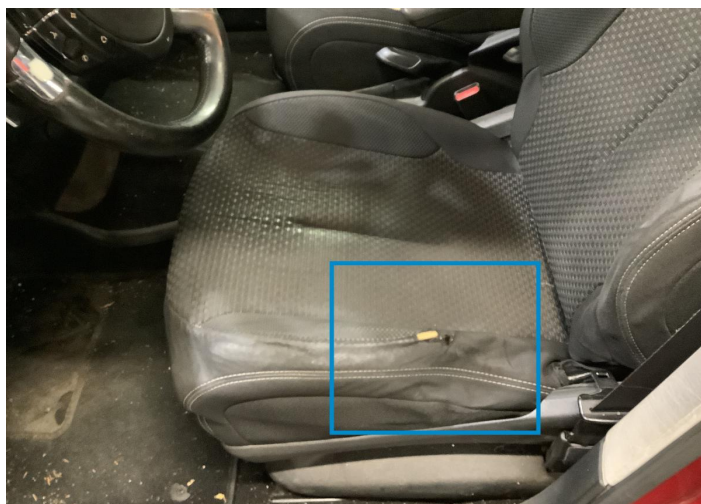


Component		Damage	Comments
1	Seat / Front Left	Interior / Holed	
2	Seat / Front Left	Interior / Dirty	
3	Floor Carpet	Interior / Ripped	
4	Steering Wheel / Front	Interior / Worn - out	
5	Seat / Front Left	Interior / Broken	
6	Panel Filling / Front Left	Interior / Dirty	
7	Panel Filling / Front Left	Interior / Scraped	
8	Panel Filling / Back Left	Interior / Scraped	
9	Panel Filling / Back Right	Interior / Scraped	
10	Panel Filling / Back Right	Interior / Stained	
11	Seat / Front Right	Interior / Broken	
12	Glovebox	Interior / Scraped	

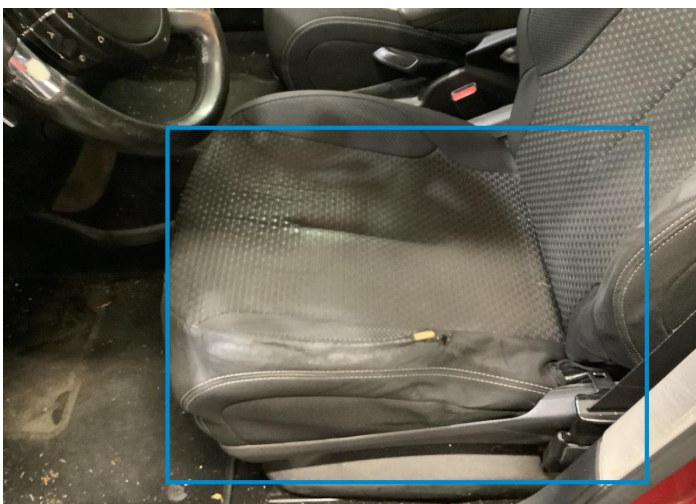
13	Panel Filling / Front Right	Interior / Scraped
14	Roof	Paint / Poor Previous Repair
15	Cant Rail / Right	Paint / Poor Previous Repair
16	Tailgate	Paint / Poor Previous Repair
17	Tailgate	Bodywork / Dent / Dent
18	Bumper / Back	Paint / Scratch / Line
19	Fender / Back Right	Bodywork / Dent / Deformation
20	Fender / Back Right	Paint / Poor Previous Repair
21	Rim Brake pads	Out of Bodywork / Scratch
22	Door / Back Right	Paint / Poor Previous Repair
23	Door / Back Right	Bodywork / Dent / Dent
24	Door Side Molding / Back Right	Paint / Poor Previous Repair
25	Door / Front Right	Paint / Poor Previous Repair
26	Door / Front Right	Bodywork / Dent / Dent
27	Rocker Panel / Center Right	Paint / Poor Previous Repair
28	Mirror Shell / Front Right	Paint / Scratch / Line
29	Fender / Front Right	Paint / Scratch / Line
30	Rim	Out of Bodywork / Scratch
31	Corner Bumper / Front Right	Paint / Poor Previous Repair
32	Bumper / Front	Paint / Poor Previous Repair
33	Hood	Paint / Poor Previous Repair
34	Corner Bumper / Front Left	Paint / Poor Previous Repair
35	Fender / Front Left	Paint / Scratch / Line
36	Rim	Out of Bodywork / Scratch
37	Pillar / Front Left	Paint / Poor Previous Repair
38	Cant Rail / Left	Paint / Poor Previous Repair
39	Door / Front Left	Paint / Scratch / Line
40	Door / Back Left	Paint / Poor Previous Repair
41	Door / Back Left	Bodywork / Dent / Deformation

42	Rocker Panel / Center Left	Bodywork / Dent / Deformation
43	Rim	Out of Bodywork / Scratch
44	Fender / Back Left	Paint / Scratch / Line
45	Windshield / Front	Glass Break / Impact

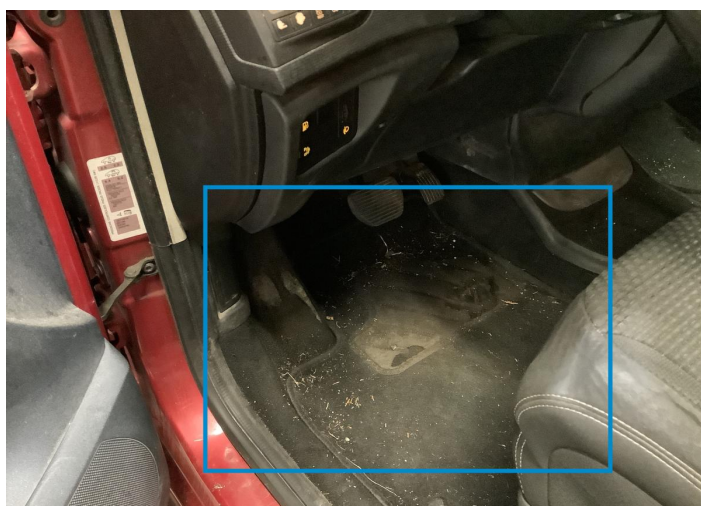




1. Seat / Front Left  
Interior / Holed -



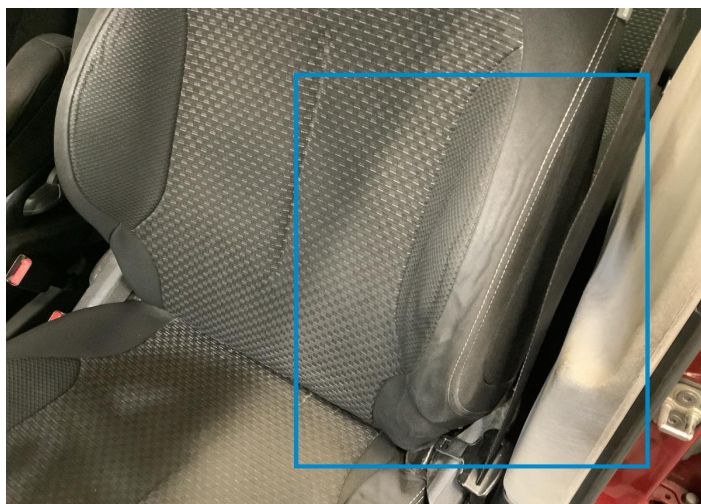
2. Seat / Front Left  
Interior / Dirty -



3. Floor Carpet  
Interior / Ripped -



4. Steering Wheel / Front  
Interior / Worn - out -



5. Seat / Front Left  
Interior / Broken -



6. Panel Filling / Front Left  
Interior / Dirty -





7. Panel Filling / Front Left  
Interior / Scraped -



8. Panel Filling / Back Left  
Interior / Scraped -



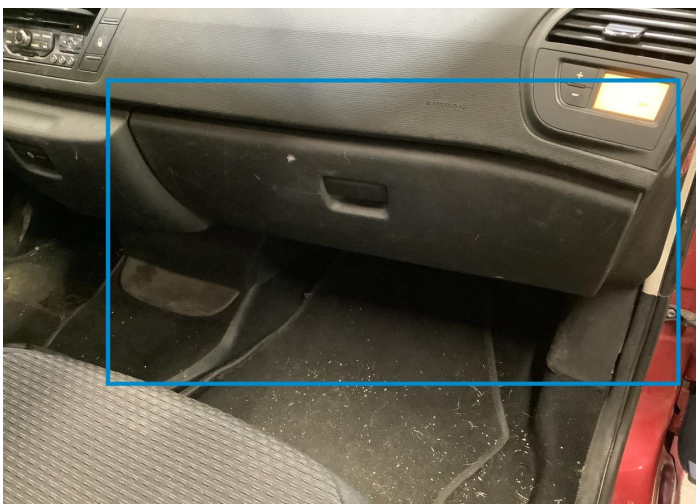
9. Panel Filling / Back Right  
Interior / Scraped -



10. Panel Filling / Back Right  
Interior / Stained -



11. Seat / Front Right  
Interior / Broken -

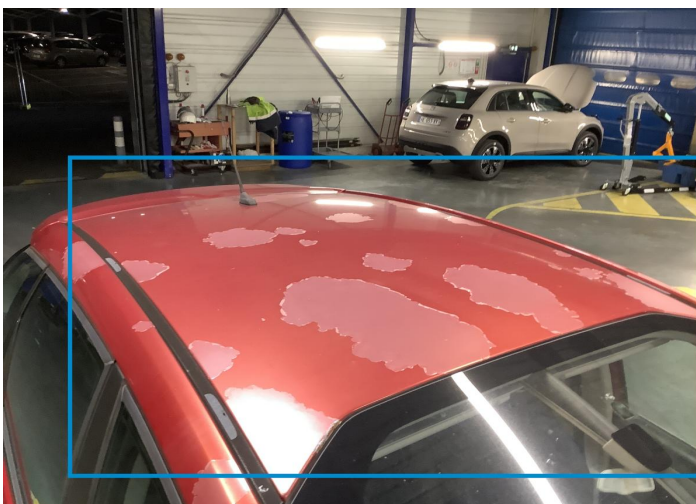


12. Glovebox  
Interior / Scraped -

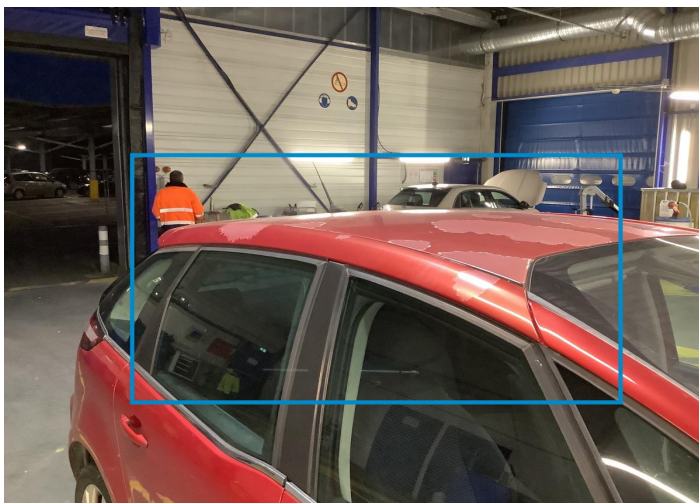




13. Panel Filling / Front Right Interior / Scraped -



14. Roof Paint / Poor Previous Repair -



15. Cant Rail / Right Paint / Poor Previous Repair -



16. Tailgate Paint / Poor Previous Repair -



17. Tailgate Bodywork / Dent / Dent -

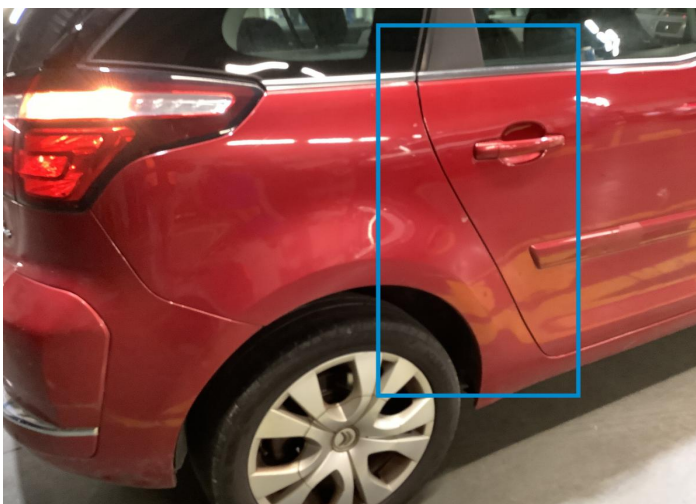


18. Bumper / Back Paint / Scratch / Line -





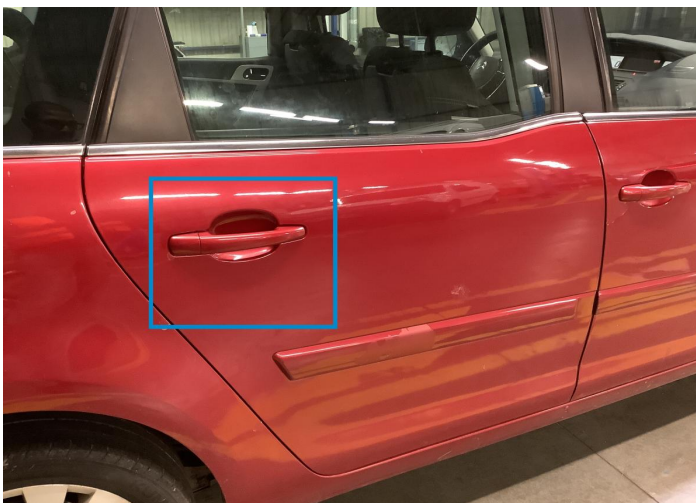
19. Fender / Back Right  
Bodywork / Dent / Deformation -



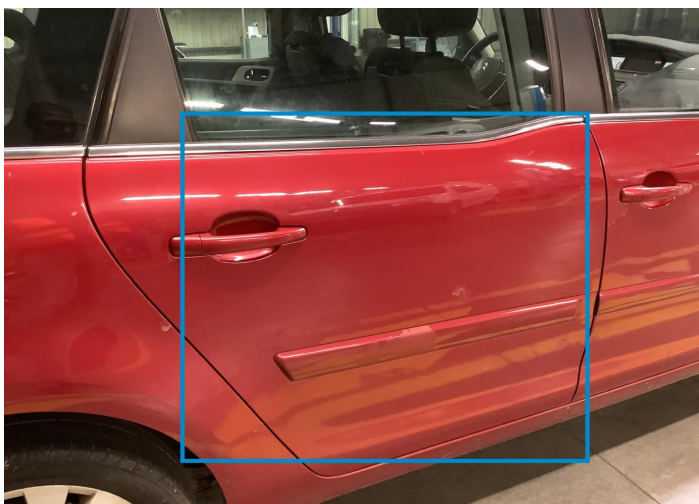
20. Fender / Back Right  
Paint / Poor Previous Repair -



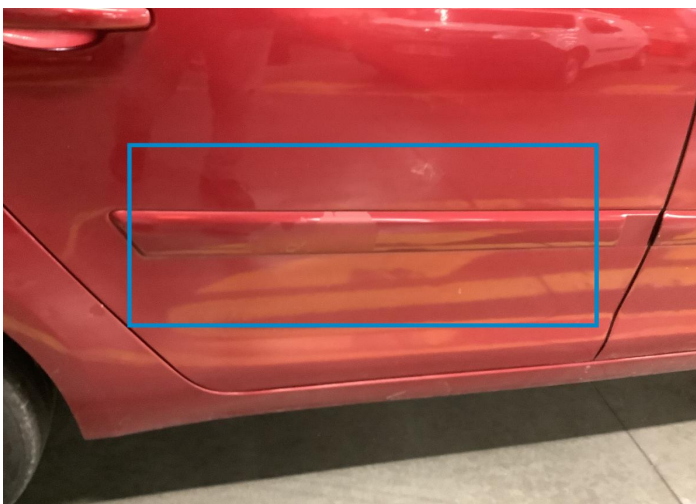
21. Rim Brake pads  
Out of Bodywork / Scratch -



22. Door / Back Right  
Paint / Poor Previous Repair -



23. Door / Back Right  
Bodywork / Dent / Dent -



24. Door Side Molding / Back Right  
Paint / Poor Previous Repair -

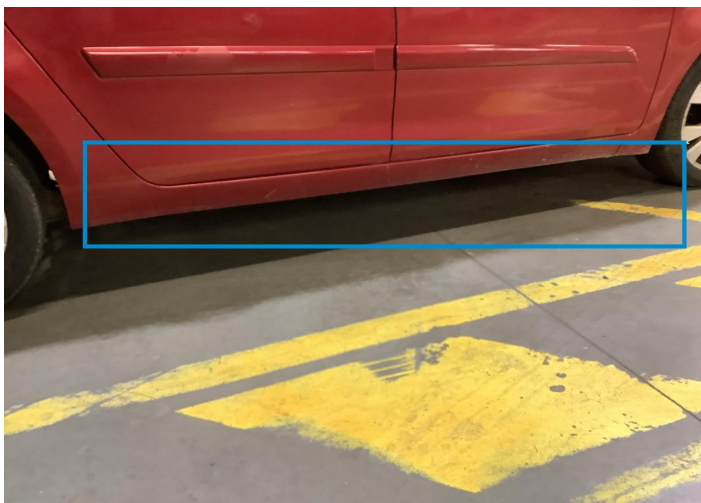




25. Door / Front Right  
Paint / Poor Previous Repair -



26. Door / Front Right  
Bodywork / Dent / Dent -



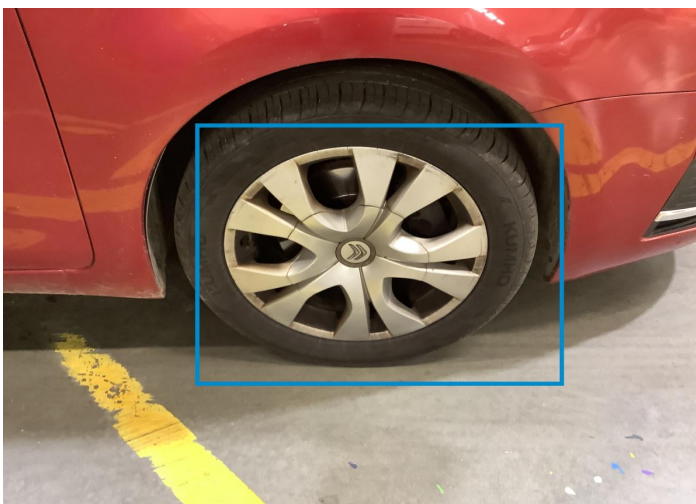
27. Rocker Panel / Center Right  
Paint / Poor Previous Repair -



28. Mirror Shell / Front Right  
Paint / Scratch / Line -

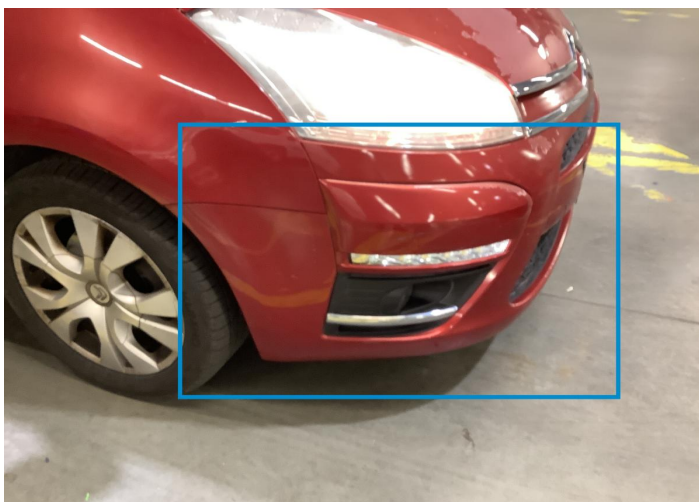


29. Fender / Front Right  
Paint / Scratch / Line -



30. Rim  
Out of Bodywork / Scratch -





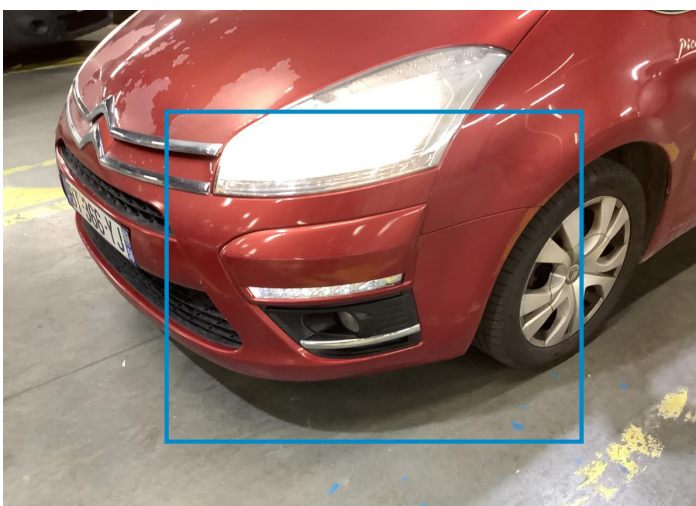
31. Corner Bumper / Front Right  
Paint / Poor Previous Repair -



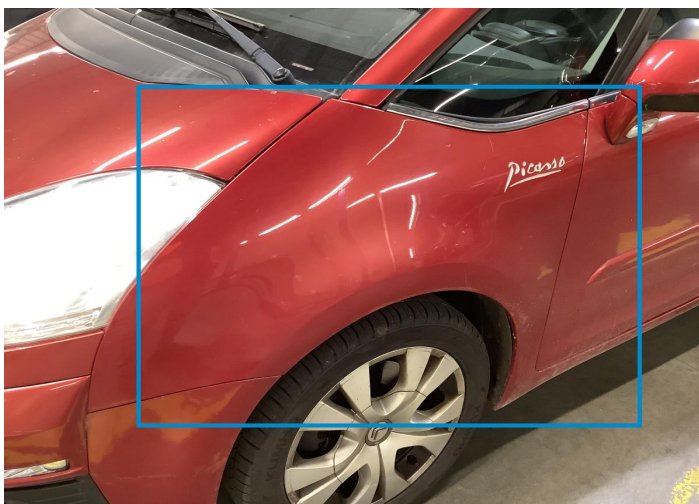
32. Bumper / Front  
Paint / Poor Previous Repair -



33. Hood  
Paint / Poor Previous Repair -



34. Corner Bumper / Front Left  
Paint / Poor Previous Repair -



35. Fender / Front Left  
Paint / Scratch / Line -

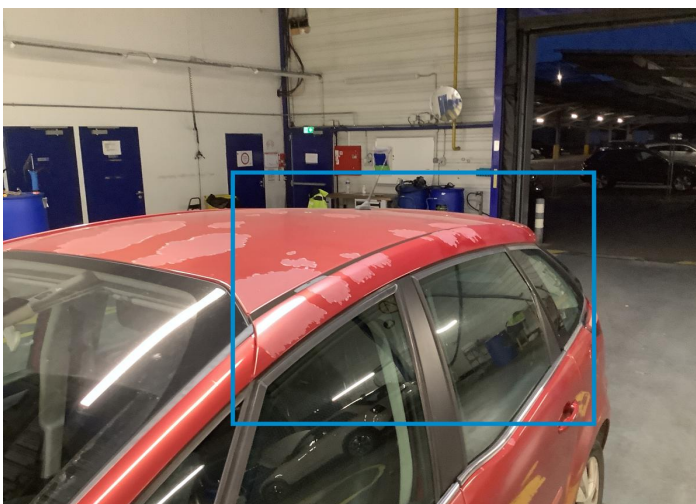


36. Rim  
Out of Bodywork / Scratch -

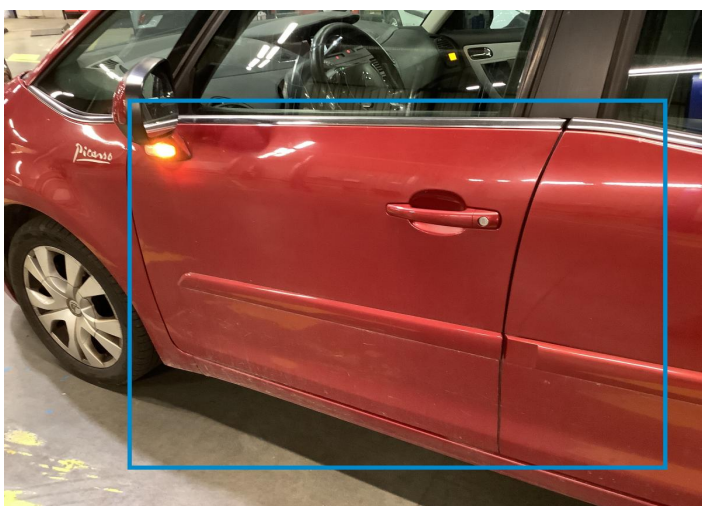




37. Pillar / Front Left  
Paint / Poor Previous Repair -



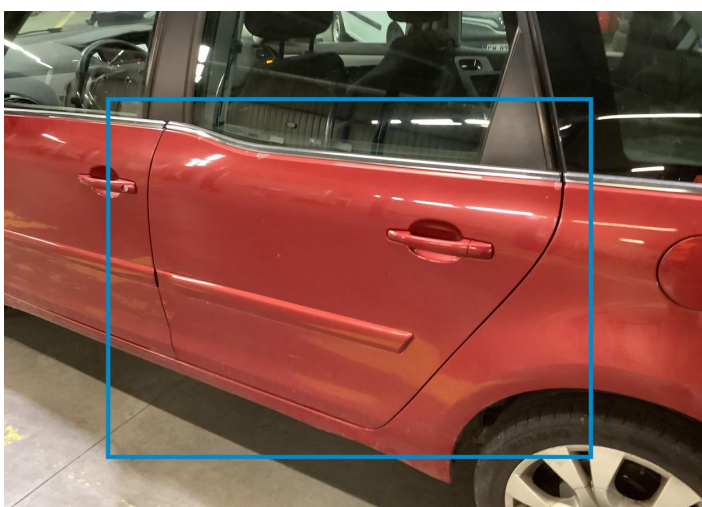
38. Cant Rail / Left  
Paint / Poor Previous Repair -



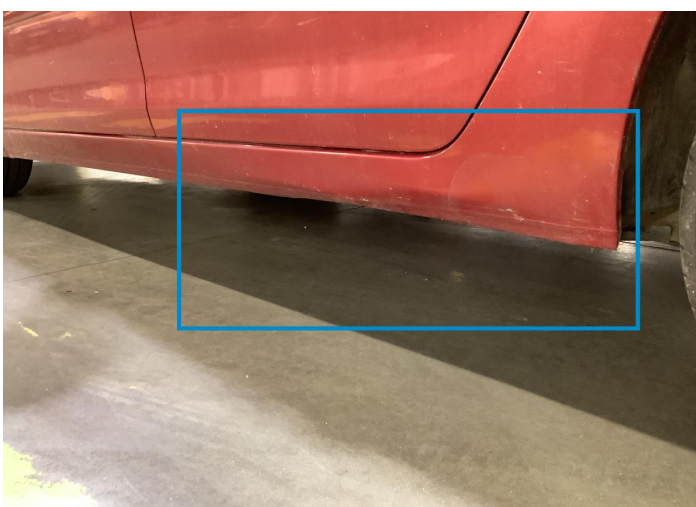
39. Door / Front Left  
Paint / Scratch / Line -



40. Door / Back Left  
Paint / Poor Previous Repair -

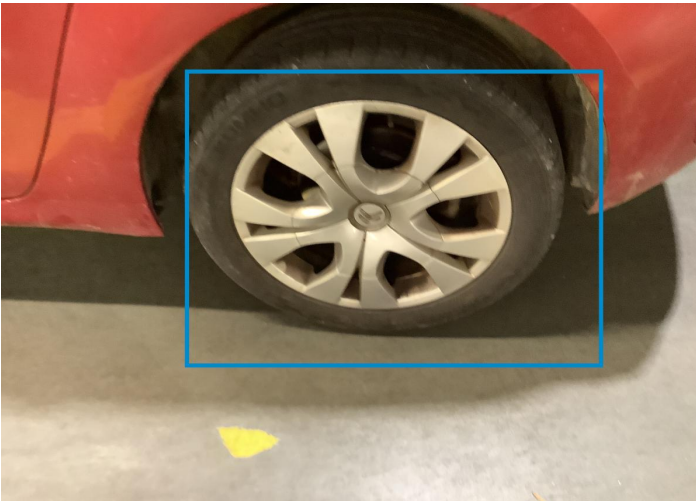


41. Door / Back Left  
Bodywork / Dent / Deformation -



42. Rocker Panel / Center Left  
Bodywork / Dent / Deformation -





43. Rim  
Out of Bodywork / Scratch -



44. Fender / Back Left  
Paint / Scratch / Line -



45. Windshield / Front  
Glass Break / Impact -

Mechanical Condition

Tyres

Presence Anti-Theft Lock Nut 

 *No troubles detected, good condition or correct tests, according to vehicle age and mileage*

 *Damages or malfunction detected that requires repairs by the buyer*

 *Not applicable*

 *Not tested*

Disclaimer Section

*The test drive is done on a flat surface and lasts about 2 minutes. The driven distance is a minimum of 300 meters, including a u-turn, an acceleration and a braking phase. The highest speed achieved during this test is 50km/h. The mechanical check is a visual and dynamic diagnosis without any disassembly. We cannot guarantee any mechanical wear part.*