



CITROEN C3

C3 PureTech 110 S&S BVM6 C-Series

VIN NO VF7SXHNPZNT538868

Registration Number GF678EM



MOT Date



Last Service



Number of Owners



Last Service Mileage



Number of Keys



First Registration Date



2022-03-15

Odometer Reading



64794 km

Country First Registered



-

Inspection Report Summary

Customer	BCA Auto Encheres	Report Number	P20250526155044
Inspection Date / Place	2025-05-26 / BCA BETHUNE	Cosmetic Grade	5

Vehicle Summary

Vehicle Condition	Not Movable	VAT Type	Qualified - Normal Rate
Fuel Type	Petrol	Gearbox Type	Manual
Colour	Black	Engine Size (cc)	1199
Engine Size	1.2	No of Doors	5
Body Type	Hatchback	Drive Train	Front
Seat Colour		No of Seats	5
Charging Cables		WLTP CO2 Emissions	

Vehicle History & Documents

Service Book Available	-	Next Service Mileage	km
Previous Usage	Normal Use	Imported	
Manufacturer Warranty			



Equipment

Central locking	Radio	Alloys wheels	Front fog lamps
Satellite navigation	Electrically folding wing mirrors	Rear parking sensors	Cruise control
Power assisted steering			

Equipment Details

Seat Heating	No	Air Conditioning	Yes
Sunroof Type	Tilt/Slide Steel		

17 Dommages

3 Dommages



14	Rim / Back Left	Out of Bodywork / Scratch
15	Corner Bumper / Back Left	Paint / Scratch / Scuff
16	Bumper / Back	Paint / Scratch / Scuff
17	Corner Bumper / Back Right	Paint / Scratch / Scuff
18	Rim / Back Right	Out of Bodywork / Scratch
19	Fender / Front Right	Bodywork / Dent / Deformation
20	Rim / Front Right	Out of Bodywork / Scratch



1. Dashboard / Front
Interior / Dysfunctional -



2. Floor Carpet
Interior / Dirty -



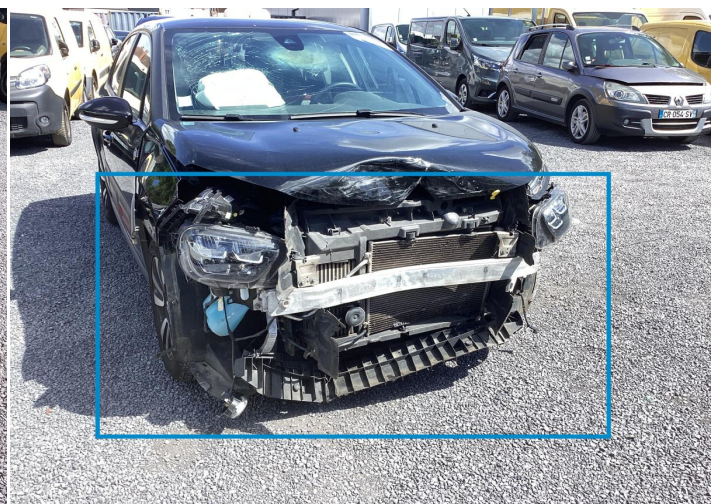
3. Floor Carpet
Interior / Dirty -



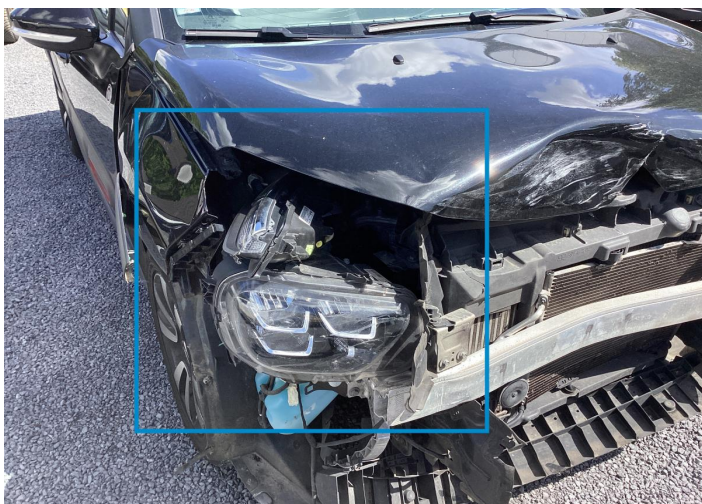
4. Windshield / Front
Glass Break -



5. Hood
Bodywork / Dent / Deformation -



6. Bumper / Front
Missing Part -



7. Front Light / Front Right
Glass Break -



8. Front Light / Front Left
Glass Break -



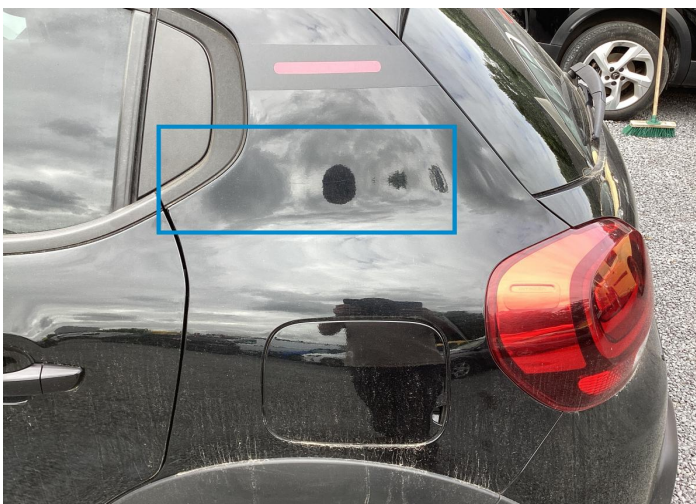
9. Shield / Front
Bodywork / Breakage -



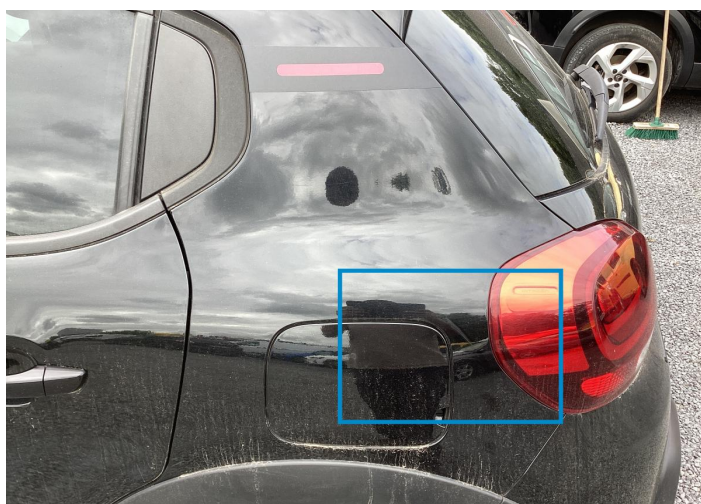
10. Hood
Bodywork / Dent / Deformation -



11. Rim / Front Left
Out of Bodywork / Scratch -



12. Side Panel / Back Left
Paint / Scratch / Line -



13. Side Panel / Back Left
Paint / Scratch / Line -



14. Rim / Back Left
Out of Bodywork / Scratch -



15. Corner Bumper / Back Left
Paint / Scratch / Scuff -



16. Bumper / Back
Paint / Scratch / Scuff -



17. Corner Bumper / Back Right
Paint / Scratch / Scuff -



18. Rim / Back Right
Out of Bodywork / Scratch -



19. Fender / Front Right
Bodywork / Dent / Deformation -

20. Rim / Front Right
Out of Bodywork / Scratch -

Mechanical Condition

Tyres

Presence Anti-Theft Lock Nut ✓

✓ No troubles detected, good condition or correct tests, according to vehicle age and mileage

! Damages or malfunction detected that requires repairs by the buyer

NA Not applicable

⊠ Not tested

Disclaimer Section

The test drive is done on a flat surface and lasts about 2 minutes. The driven distance is a minimum of 300 meters, including a u-turn, an acceleration and a braking phase. The highest speed achieved during this test is 50km/h. The mechanical check is a visual and dynamic diagnosis without any disassembly. We cannot guarantee any mechanical wear part.