



CITROEN C3  
C3 Picasso VTi 95 Collection

VIN NO VF7SH8FP0BT526300  
Registration Number BQ767LA



MOT Date	Number of Owners	Number of Keys	Odometer Reading
-	-	1	110832 km
Last Service	Last Service Mileage	First Registration Date	Country First Registered
-	-	2011-06-23	-

Inspection Report Summary

Customer	BCA Auto Encheres	Report Number	P20250930230120
Inspection Date / Place	2025-09-30 / BCA INGRANDES	Cosmetic Grade	2

Vehicle Summary

Vehicle Condition	Non-Runner	VAT Type	Exempt Rate
Fuel Type	Petrol	Gearbox Type	Manual
Colour	Beige	Engine Size (cc)	1397
Engine Size	1.4	No of Doors	5
Family	Passenger Car	Drive Train	Front
Seat Colour		No of Seats	5
Charging Cables		NEDC CO2 Rating (q/km)	149
Engine Rating CV	6	Metalic Colour	No
Accident Damage	No	Euro Emission	

Vehicle History & Documents

Service Book Available	Missing	Next Service Mileage	km
Previous Usage	Normal Use	Imported	No
Manufacturer Warrenty			





Equipment

Central locking	Alloys wheels	Power assisted steering	Radio
Cruise control			

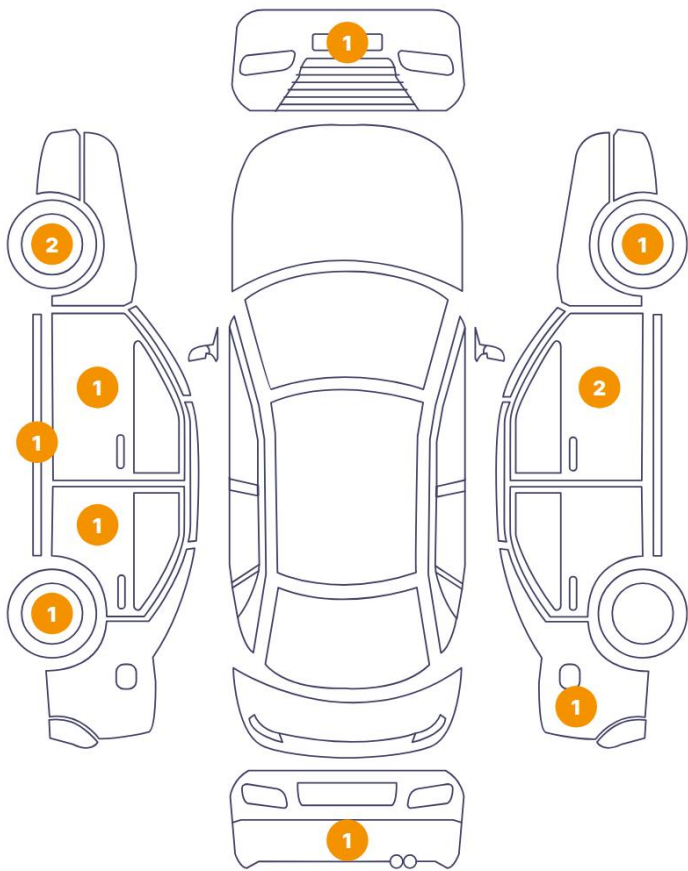
Equipment Details

Seat Heating	No	Air Conditioning	Yes
Sunroof Type	Tilt/Slide Steel		

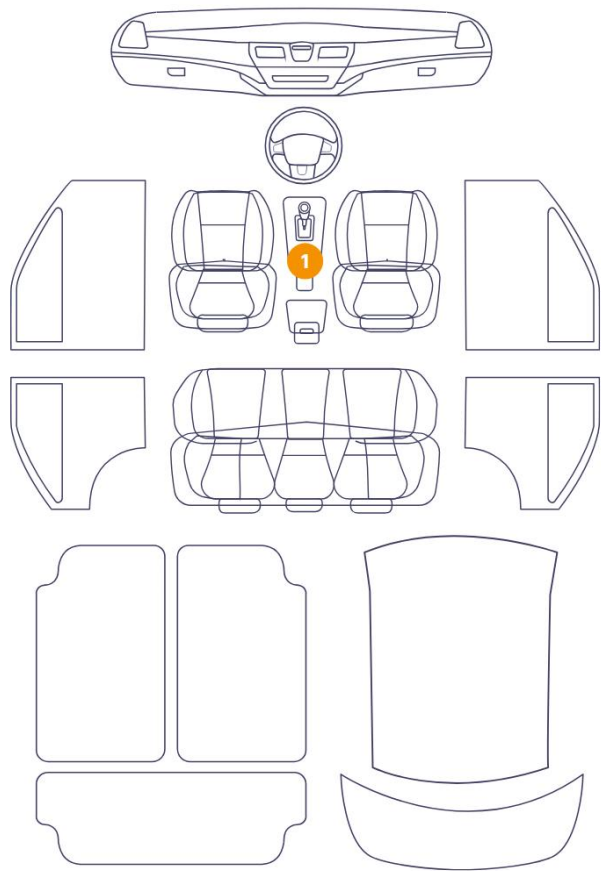


Cosmetic Damage

12 Dommages

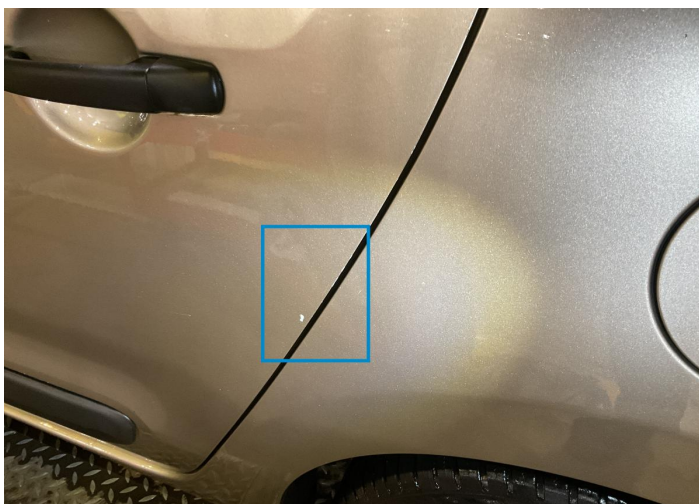


1 Dommages



Component		Damage	Comments
1	Door / Back Left	Paint / Chipping	
2	Rim / Back Left	Out of Bodywork / Scratch	
3	Corner Bumper / Back Right	Paint / Scratch / Scuff	
4	Fender / Back Right	Bodywork / Dent / Dent	
5	Door / Front Right	Paint / Scratch / Scuff	
6	Mirror Shell / Front Right	Paint / Chipping	
7	Rim / Front Right	Out of Bodywork / Scratch	
8	Corner Bumper / Front Left	Paint / Scratch / Scuff	
9	Rim / Front Left	Out of Bodywork / Scratch	
10	Rim / Front Left	Out of Bodywork / Scratch	
11	Mirror Shell / Front Left	Bodywork / Breakage	
12	Rocker Panel / Center Left	Bodywork / Dent / Deformation	





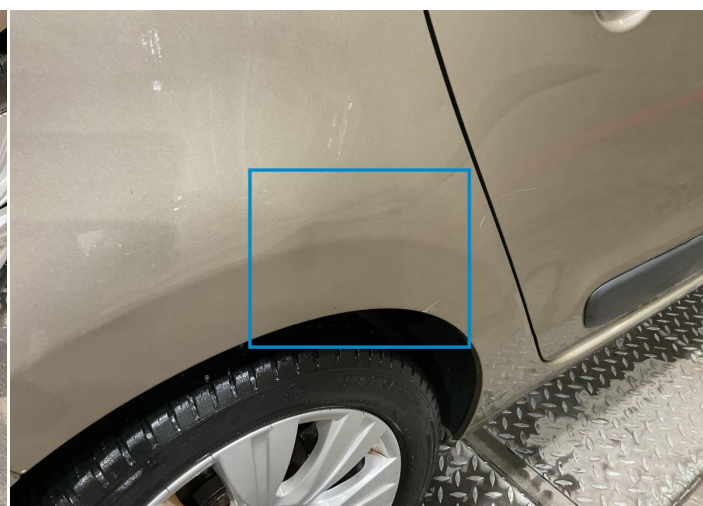
1. Door / Back Left  
Paint / Chipping -



2. Rim / Back Left  
Out of Bodywork / Scratch -



3. Corner Bumper / Back Right  
Paint / Scratch / Scuff -



4. Fender / Back Right  
Bodywork / Dent / Dent -



5. Door / Front Right  
Paint / Scratch / Scuff -

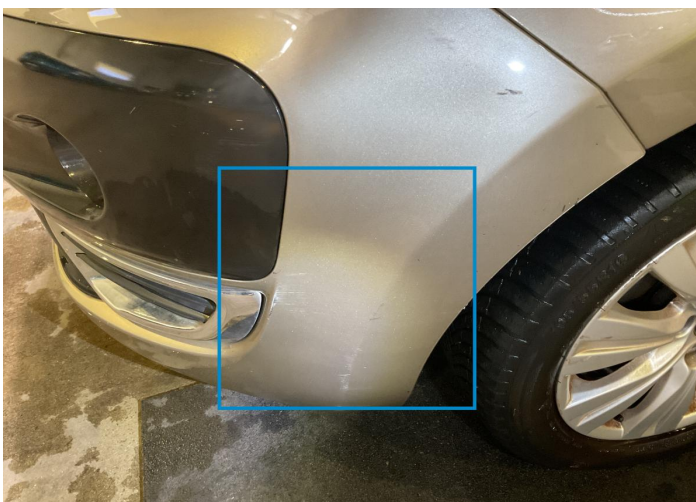


6. Mirror Shell / Front Right  
Paint / Chipping -





7. Rim / Front Right  
Out of Bodywork / Scratch -



8. Corner Bumper / Front Left  
Paint / Scratch / Scuff -



9. Rim / Front Left  
Out of Bodywork / Scratch -



10. Rim / Front Left  
Out of Bodywork / Scratch -

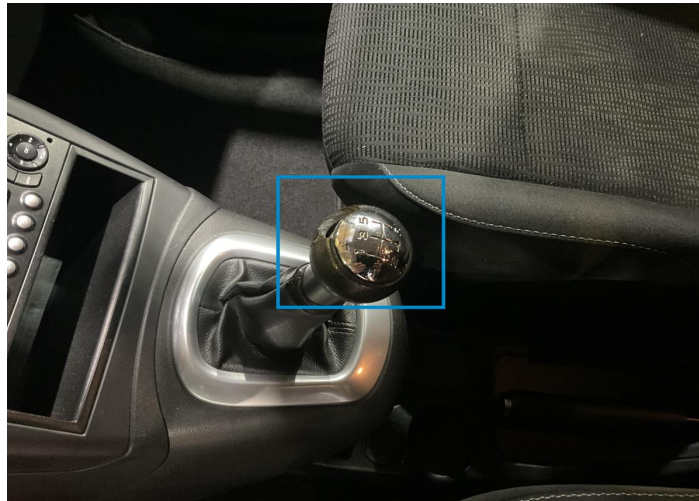


11. Mirror Shell / Front Left  
Bodywork / Breakage -



12. Rocker Panel / Center Left  
Bodywork / Dent / Deformation -





13. Gear Knob  
Interior / Broken -

Mechanical Condition

Tyres

Presence Anti-Theft Lock Nut 

 *No troubles detected, good condition or correct tests, according to vehicle age and mileage*

 *Damages or malfunction detected that requires repairs by the buyer*

 *Not applicable*

 *Not tested*

Disclaimer Section

*The test drive is done on a flat surface and lasts about 2 minutes. The driven distance is a minimum of 300 meters, including a u-turn, an acceleration and a braking phase. The highest speed achieved during this test is 50km/h. The mechanical check is a visual and dynamic diagnosis without any disassembly. We cannot guarantee any mechanical wear part.*