



CITROEN C3

C3 PureTech 82 Feel Edition

VIN NO VF7SCHMZ6GW564727
Registration Number EB990QZ



MOT Date	Number of Owners	Number of Keys	Odometer Reading
-	-	1	103720 km
Last Service	Last Service Mileage	First Registration Date	Country First Registered
-	-	2016-04-26	France

Inspection Report Summary

Customer	BCAauto Encheres	Report Number	P20250904100901
Inspection Date / Place	2025-09-04 / BCA AUNAY	Cosmetic Grade	2

Vehicle Summary

Vehicle Condition	Non-Runner	VAT Type	Exempt Rate
Fuel Type	Petrol	Gearbox Type	Manual
Colour	Grey	Engine Size (cc)	1199
Engine Size	1.2	No of Doors	5
Body Type	Hatchback	Drive Train	Front
Seat Colour		No of Seats	5
Seat Covering Name		Seat Covering	Cloth
Charging Cables		NEDC CO2 Rating (q/km)	107

Vehicle History & Documents

Service Book Available	Missing	Next Service Mileage	km
Previous Usage	Normal Use	Imported	
Manufacturer Warrenty			





Equipment

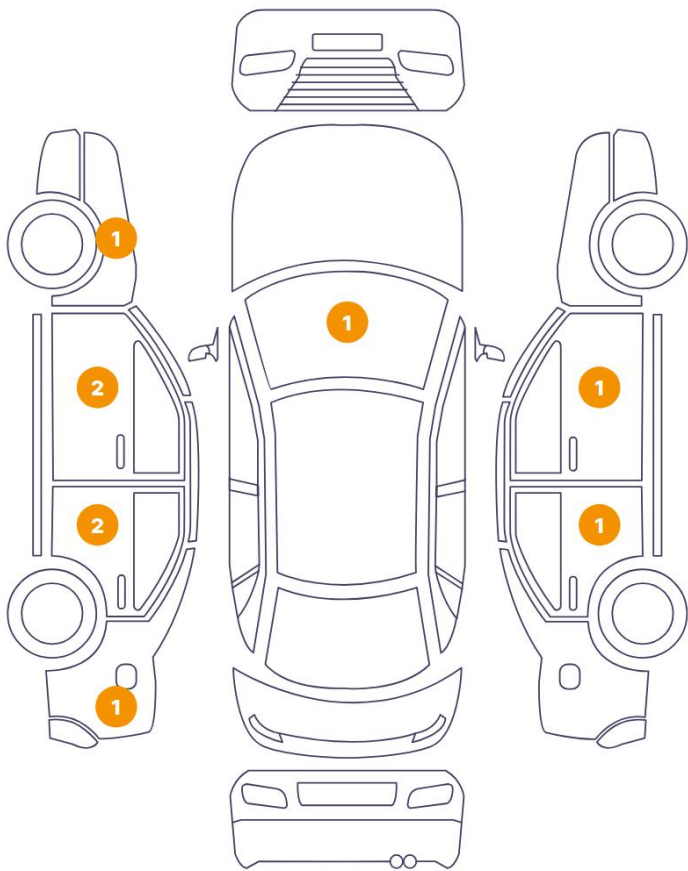
Central locking	Rear parking sensors	Cruise control	Power assisted steering
Radio	Alloys wheels	Front fog lamps	

Equipment Details

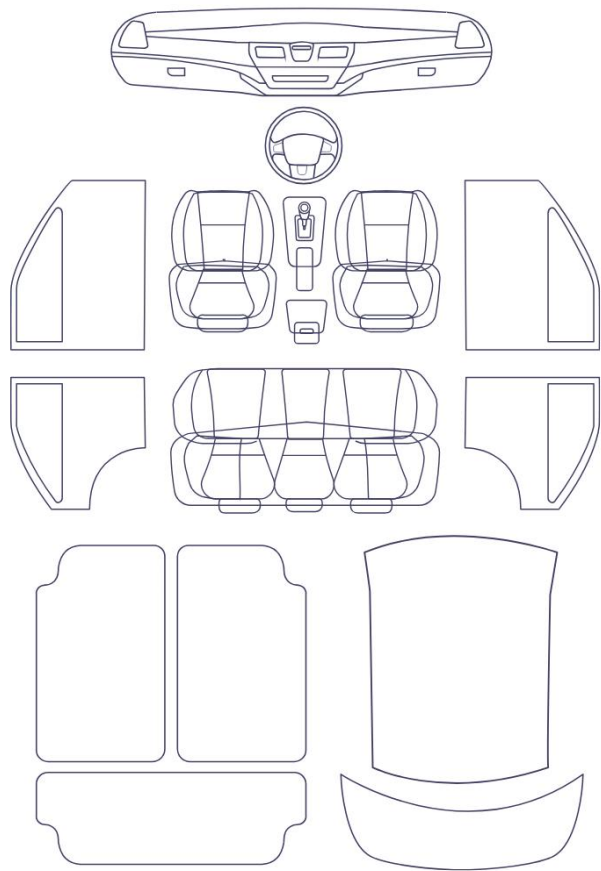
Seat Heating	No	Air Conditioning	Yes
--------------	----	------------------	-----

Cosmetic Damage

9 Dommages



0 Dommages



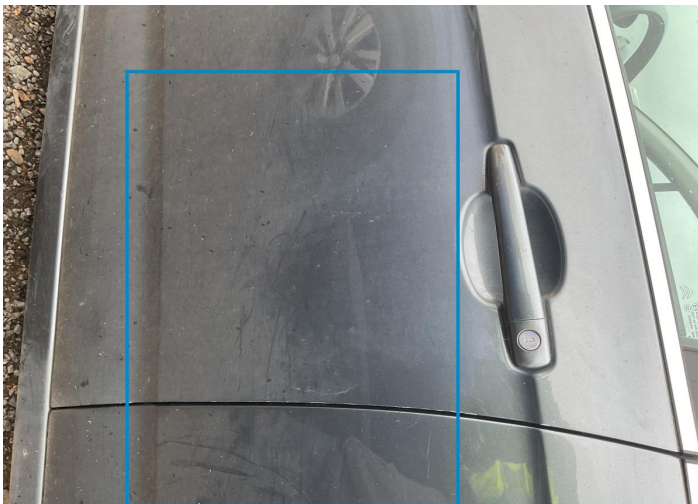
Component		Damage	Comments
1	Fender / Front Left	Paint / Scratch / Line	
2	Door / Front Left	Paint / Scratch / Line	
3	Door / Front Left	Paint / Scratch / Line	
4	Door / Back Left	Paint / Scratch / Line	
5	Door / Back Left	Paint / Scratch / Line	
6	Side Panel / Back Left	Paint / Scratch / Line	
7	Door / Back Right	Paint / Scratch / Line	
8	Door / Front Right	Paint / Scratch / Line	
9	Windshield / Front	Glass Break / Impact	



1. Fender / Front Left
Paint / Scratch / Line -



2. Door / Front Left
Paint / Scratch / Line -



3. Door / Front Left
Paint / Scratch / Line -



4. Door / Back Left
Paint / Scratch / Line -



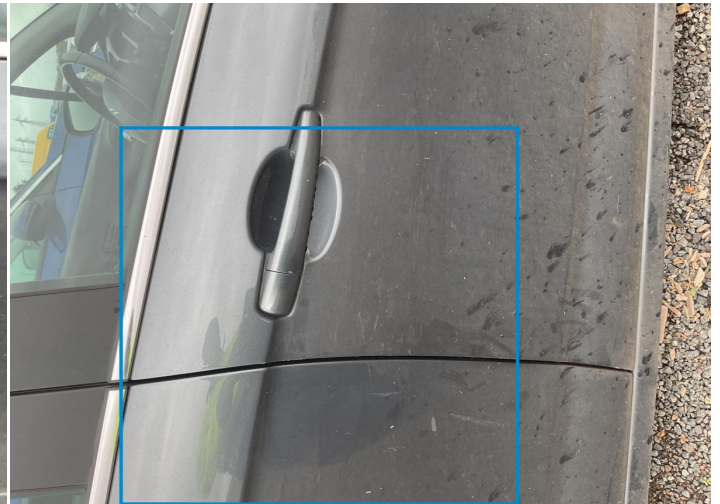
5. Door / Back Left
Paint / Scratch / Line -



6. Side Panel / Back Left
Paint / Scratch / Line -



7. Door / Back Right
Paint / Scratch / Line -



8. Door / Front Right
Paint / Scratch / Line -



9. Windshield / Front
Glass Break / Impact -

Mechanical Condition


Tyres

Presence Anti-Theft Lock Nut 

 *No troubles detected, good condition or correct tests, according to vehicle age and mileage*

 *Damages or malfunction detected that requires repairs by the buyer*

 *Not applicable*

 *Not tested*

Disclaimer Section

The test drive is done on a flat surface and lasts about 2 minutes. The driven distance is a minimum of 300 meters, including a u-turn, an acceleration and a braking phase. The highest speed achieved during this test is 50km/h. The mechanical check is a visual and dynamic diagnosis without any disassembly. We cannot guarantee any mechanical wear part.