



CITROEN C5

C5 Tourer V6 HDi 240 Biturbo FAP

VIN NO VF7RWX8ZAAL547631

Registration Number ZAAL547631



MOT Date

2025-09-01

Last Service



Number of Owners

3

Last Service Mileage



Number of Keys

2

First Registration Date

2010-07-15

Odometer Reading

360349 km

Country First Registered

Germany

Inspection Report Summary

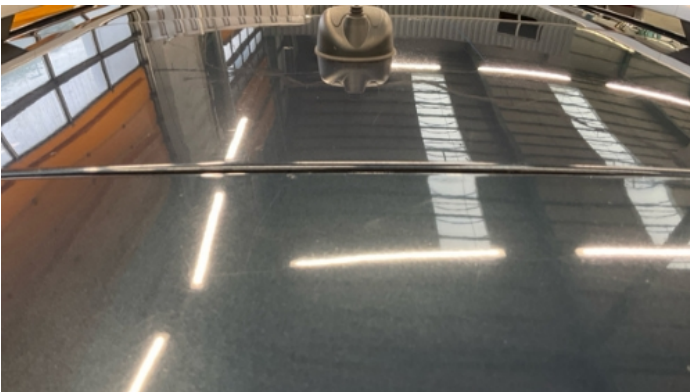
Customer	BCA Online	Report Number	P20251006094331
Inspection Date / Place	2025-10-06 / ARS Altmann AG Riedstadt	Cosmetic Grade	4

Vehicle Summary

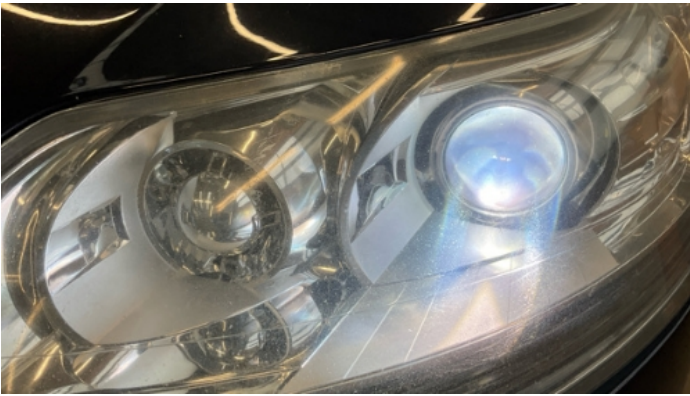
Vehicle Condition	Runner	VAT Type	Margin
Fuel Type	Diesel	Road Worthy	Yes
Colour	Dark Grey	Engine Size (cc)	2992
Engine Size	3.0	No of Doors	5
Body Type	Stationwagon / Estate	Drive Train	Front
Seat Colour		No of Seats	5
Seat Covering Name	Schwarz	Seat Covering	Leather
Charging Cables		NEDC CO2 Rating (q/km)	189
Gearbox Type	Automatic		

Vehicle History & Documents

Service Book Available	Incomplete	Next Service Mileage	km
Previous Usage		Imported	No
Manufacturer Warrenty			







Equipment

Trip Computer	Alloys wheels	Bluetooth telephone interface	Diesel particulate filter
Front parking sensors	Remote adjusting wing mirrors	Roof rails	Split folding rear seats
Sunroof	CD Player	Electrically folding wing mirrors	Leather steering wheel
Rear parking sensors	Airbag Status	Anti-lock braking	Cruise control
Front fog lamps	Headlamp wash/wipe	Remote central locking	Satellite navigation
Stability control	Xenon headlamps	Central locking	Electric tailgate
Radio			

Equipment Details

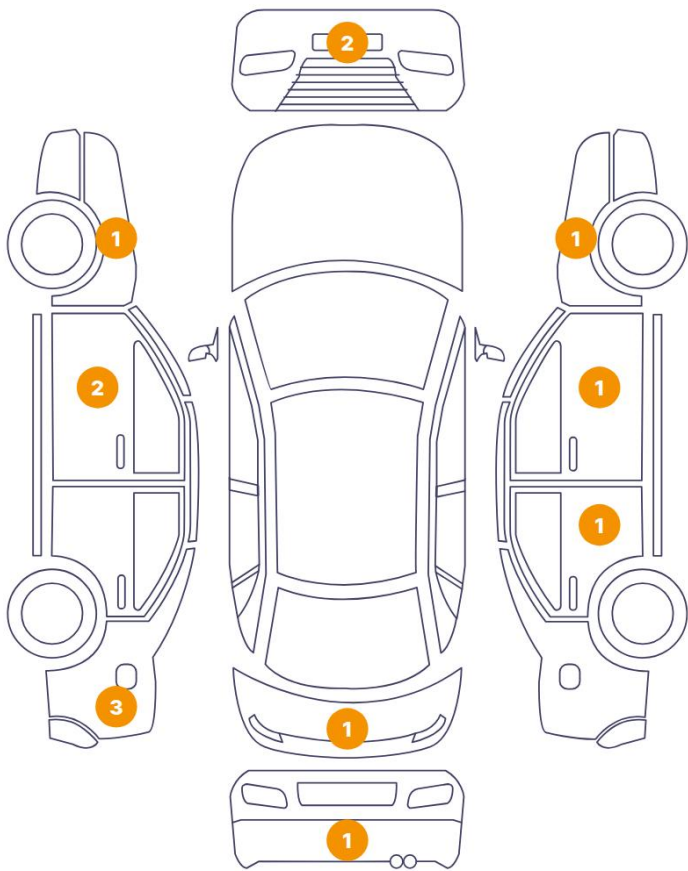
Air Conditioning	Dual Zone Climate Control	Alloy Wheel Size	18
Extra Wheel / Tyre Set	Summer Tyres - Alloy	Seat Heating	Front
Sunroof Type	Fixed Panoramic		

Wheels & Tyres

Extra Wheel - 1 Tyre Depth	1	Extra Wheel - 2 Tyre Depth	3
Extra Wheel - 3 Tyre Depth	4	Extra Wheel - 4 Tyre Depth	6
Right Front Tyre Depth	5	Left Front Tyre Depth	5
Right Rear Tyre Depth	6	Left Rear Tyre Depth	9

Cosmetic Damage

13 Schäden



1 Schäden



46

1

Component		Damage	Comments
1	Bumper / Front	Paint / Scratch / Scuff	
2	Bumper / Front	Paint / Scratch / Scuff	
3	Fender / Front Left	Paint / Corrosion	
4	Door / Front Left	Bodywork / Dent / Dent	
5	Pillar / Front Left	Bodywork / Dent / Dent	
6	Fender / Back Left	Bodywork / Dent / Dent	
7	Side Panel / Back Left	Paint / Corrosion	
8	Tailgate	Bodywork / Dent / Dent	
9	Other	Interior / Worn - out	
10	Bumper / Back	Paint / Scratch / Scuff	
11	Door / Back Right	Bodywork / Dent / Dent	
12	Mirror Shell / Front Right	Paint / Scratch / Scuff	

13	Fender / Front Right	Paint / Corrosion
14	Fender / Back Left	Paint / Scratch / Scuff



1. Bumper / Front
Paint / Scratch / Scuff -



2. Bumper / Front
Paint / Scratch / Scuff -



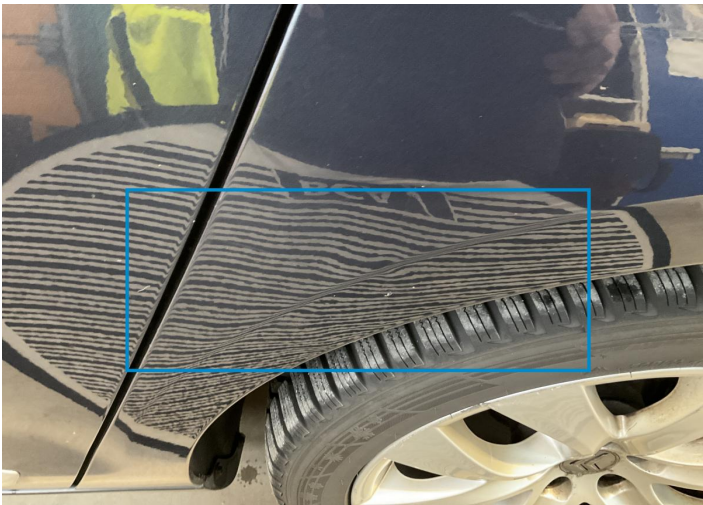
3. Fender / Front Left
Paint / Corrosion -



4. Door / Front Left
Bodywork / Dent / Dent -



5. Pillar / Front Left
Bodywork / Dent / Dent -



6. Fender / Back Left
Bodywork / Dent / Dent -



7. Side Panel / Back Left
Paint / Corrosion -



8. Tailgate
Bodywork / Dent / Dent -



9.
Interior / Worn - out -



10. Bumper / Back
Paint / Scratch / Scuff -



11. Door / Back Right
Bodywork / Dent / Dent -



12. Mirror Shell / Front Right
Paint / Scratch / Scuff -



13. Fender / Front Right
Paint / Corrosion -



14. Fender / Back Left
Paint / Scratch / Scuff -

Mechanical Condition

Control Lights

ABS Warning Light	✓	ESP Fault/Traction Control Malfunction Light	✓
Diesel Particulate Filter Light	⚠	Airbag Warning Light	✓
Oil Pressure Warning Light	✓	Brake Warning Light	✓
Power Steering Warning Light	✓	Alternator / Battery	✓
No Dashboard Lights	✓	Display Defect	✓
Service Light	⚠	Tire Pressure Monitoring System	✓

Engine

Engine Status / EML	✓	Engine Starts	✓
Engine Leak Visible	✓		

Gearbox

Gear Box	✓
----------	---

Equipments Test

Central Locking	✓	Main & Spare Keys Functioning	⚠
Electric Windows	✓	Navigation System	✓
AC / Heating System	⚠		

Levels

Brakes Fluid	✓	Coolant Fluid	✓
--------------	---	---------------	---

Test Drive Inspection

Engine			
Fume Quantity	✓	Engine Noise	✓
The Gears Scratch / Skip / Abnormal Operation	✓	Power Loss	✓
Brake			
Brake System Anomaly	✓		
Steering Wheel			
Steering Noise / Anomaly	✓		
General			
Test Driven Status	✓		
✓ <i>No troubles detected, good condition or correct tests, according to vehicle age and mileage</i>			
! <i>Damages or malfunction detected that requires repairs by the buyer</i>			
NA <i>Not applicable</i>			
☐ <i>Not tested</i>			

Disclaimer

Please also note the "UserGuide condition report", which shows the scope of the vehicle description.

[User Guide](#)