



CITROEN C4

C4 HDi 92

VIN NO VF7LC9HXC74617149
Registration Number AK152JK



MOT Date	Number of Owners	Number of Keys	Odometer Reading
-	-	1	407589 km
Last Service	Last Service Mileage	First Registration Date	Country First Registered
-	-	2007-02-15	-

Inspection Report Summary

Customer	BCAuto Encheres	Report Number	P20250612032317
Inspection Date / Place	2025-06-12 / BCA INGRANDES	Cosmetic Grade	4

Vehicle Summary

Vehicle Condition	Runner	VAT Type	Exempt Rate
Fuel Type	Diesel	Gearbox Type	Manual
Colour	White	Engine Size (cc)	1560
Engine Size	1.6	No of Doors	5
Body Type	Hatchback	Drive Train	Front
Seat Colour		No of Seats	5
Charging Cables		NEDC CO2 Rating (q/km)	125

Vehicle History & Documents

Service Book Available	Present	Next Service Mileage	km
Previous Usage	Normal Use	Imported	No
Manufacturer Warrenty			





Equipment

Radio	Power assisted steering	Stability control
-------	-------------------------	-------------------

Equipment Details

Seat Heating	No	Air Conditioning	Yes
--------------	----	------------------	-----

Wheels & Tyres

Left Rear Tyre Depth	3	Left Front Tyre Depth	3
----------------------	---	-----------------------	---

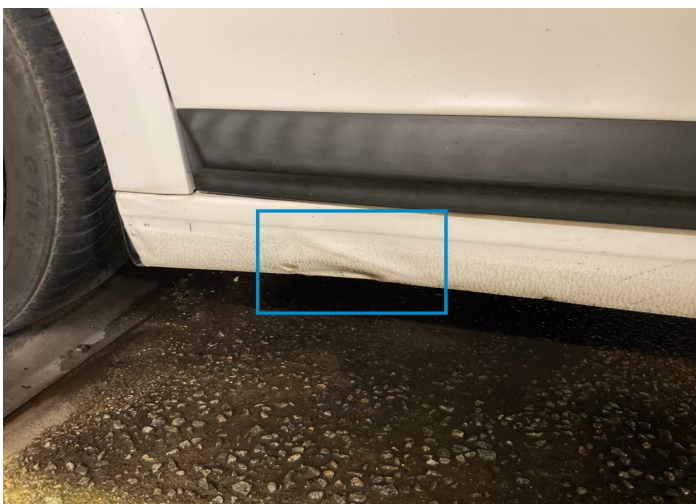
Right Rear Tyre Depth	3	Right Front Tyre Depth	3
-----------------------	---	------------------------	---

Cosmetic Damage

	Component	Damage	Comments
1	Door / Back Left	Bodywork / Dent / Dent	
2	Rocker Panel / Center Left	Bodywork / Dent / Deformation	
3	Corner Bumper / Front Left	Bodywork / Breakage / Crack	
4	Hood	Bodywork / Assembly	
5	Fender / Back Right	Bodywork / Dent / Dent	
6	Corner Bumper / Back Right	Paint / Chipping	
7	Corner Bumper / Back Right	Paint / Scratch / Line	
8	Roof Upholstery	Interior / Loose	
9	Floor Carpet	Interior / Holed	
10	Floor Carpet	Interior / Dirty	



1. Door / Back Left
Bodywork / Dent / Dent -



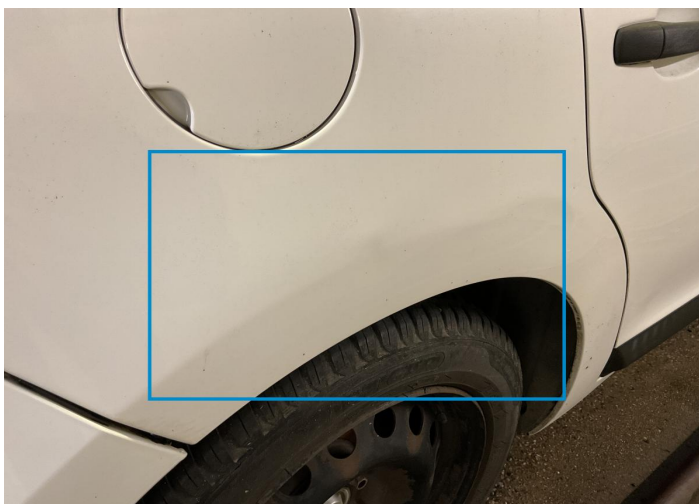
2. Rocker Panel / Center Left
Bodywork / Dent / Deformation -



3. Corner Bumper / Front Left
Bodywork / Breakage / Crack -



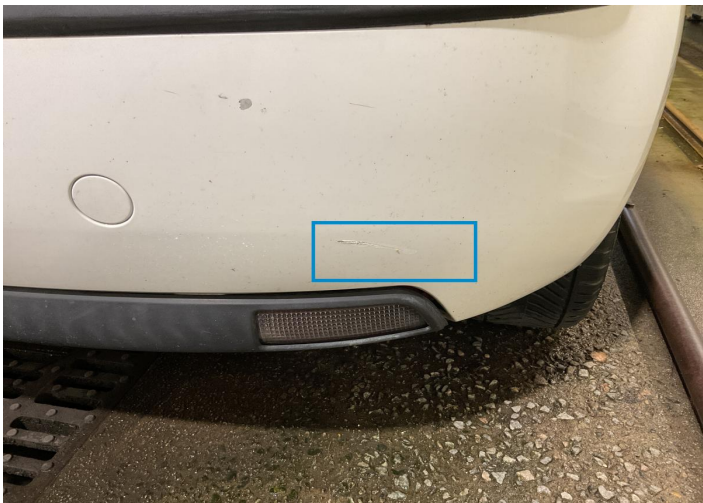
4. Hood
Bodywork / Assembly -



5. Fender / Back Right
Bodywork / Dent / Dent -



6. Corner Bumper / Back Right
Paint / Chipping -



7. Corner Bumper / Back Right
Paint / Scratch / Line -



8. Roof Upholstery
Interior / Loose -



9. Floor Carpet
Interior / Holed -



10. Floor Carpet
Interior / Dirty -

Mechanical Condition

Tyres			
Presence Anti-Theft Lock Nut ✓			
Dashboard Lights			
ABS Warning Light	✓	Diesel Particulate Filter Light	✓
ESP Fault/Traction Control Malfunction Light	✓	4WD Light	✓
Dashboard Working	✓	Engine Light	!
Oil Pressure Warning Light	✓	Airbag Warning Light	✓

Brake Warning Light	✓	Level - Fuel / Battery	20
Transmission Warning Light	✓	Service Light	✓
Steering Fluid Level	✓		

Equipments Test

Electric Windows	!	Convertible, Sunroof, Wagon, Flatbed truck, Tailgate electrics test	NA
Dump / Trail / Tail Gate Lift	NA	Main & Spare Keys Functioning	✓
Central Locking	!	Audio Equipment	✓
Navigation System	NA	AC / Heating System	!
Parking Sensors / Cameras Functioning	NA		

Levels

Oil - Condition	!	Level - Oil	!
Coolant Fluid - Condition	!	Coolant Fluid	!
Brakes Fluid	✓		

Engine

Cross Member	✓	Serpentine Belt	!
Control Liquid Leak	!		

Comments

Comments	Batterie HS / Voyant moteur / bruit train avant / tire à gauche
----------	---

Hybrid/EV

Charge Port Condition	NA	Charge lead 1 condition /Charge lead 2 condition	NA
Hybrid System Fault	NA		

Test Drive Inspection

Test Drive			
Engine functioning	✓	Engine / Aux Belt / Pulley Noise	!
Vehicle Starts	✓	Steering Noise/Gripping	✓
Engine Power	✓	Smoke Quantity	!
Transmission	✓	Clutch Functioning	✓
Steering	✓	Brakes Functionning	✓
✓ No troubles detected, good condition or correct tests, according to vehicle age and mileage			
! Damages or malfunction detected that requires repairs by the buyer			
NA Not applicable			
☐ Not tested			

Disclaimer Section

The test drive is done on a flat surface and lasts about 2 minutes. The driven distance is a minimum of 300 meters, including a u-turn, an acceleration and a braking phase. The highest speed achieved during this test is 50km/h. The mechanical check is a visual and dynamic diagnosis without any disassembly. We cannot guarantee any mechanical wear part.