



CITROEN C3 Aircross I 2021

C3 Aircross 1.2 puretech Shine s&s 110cv

VIN NO VF72CYHSMN4408714

Registration Number 4408714



MOT Date



Last Service



Number of Owners



Last Service Mileage



Number of Keys



First Registration Date



2023-03-31

Odometer Reading



46374 km

Country First Registered



Spain

Inspection Report Summary

Customer	BCA Lodi	Report Number	P20250926094517
Inspection Date / Place	2025-09-26 / BCA Lodi	Cosmetic Grade	4

Vehicle Summary

Vehicle Condition	Runner	VAT Type	Qualified
Fuel Type	Petrol	Gearbox Type	Manual
Colour	White	Engine Size (cc)	1199
Engine Size	1.2	No of Doors	5
Body Type	SUV	Drive Train	Front
Seat Colour	Black	No of Seats	5
Seat Covering Name		Seat Covering	Cloth
Charging Cables		WLTP CO2 Emissions	

Vehicle History & Documents

Service Book Available	-	Next Service Mileage	km
Previous Usage	Rental Car	Imported	Yes
Manufacturer Warrenty			







Equipment

Central locking	Rear parking sensors	Digital Radio	Volante multifuncion
Remote adjusting wing mirrors	Cruise control	Tyre Mobility Kit	Power assisted steering
Alloys wheels	Satellite navigation	Parcel Shef	Remote central locking
Trip Computer	Stability control		

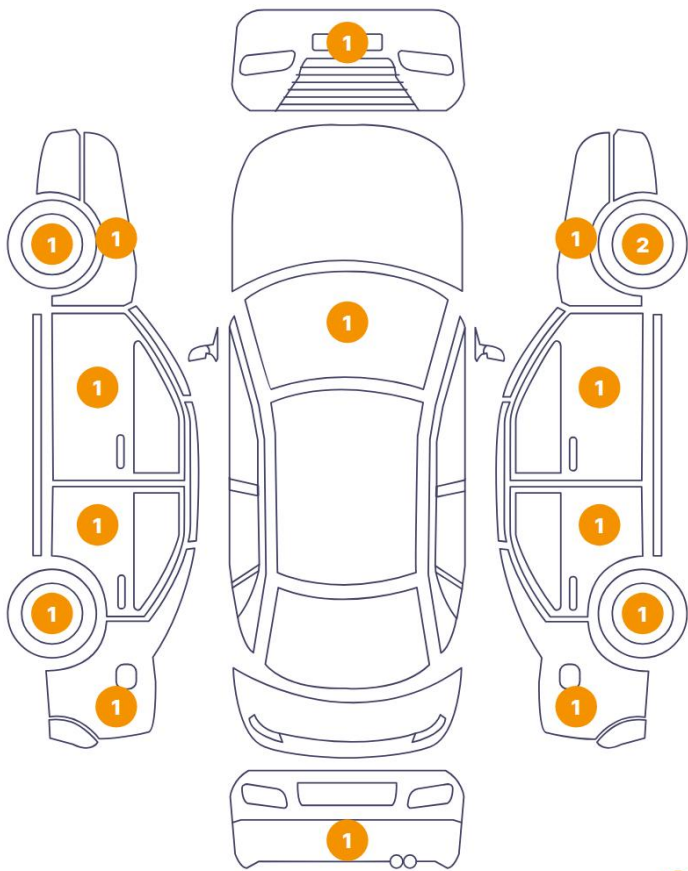
Wheels & Tyres

Mounted Tires

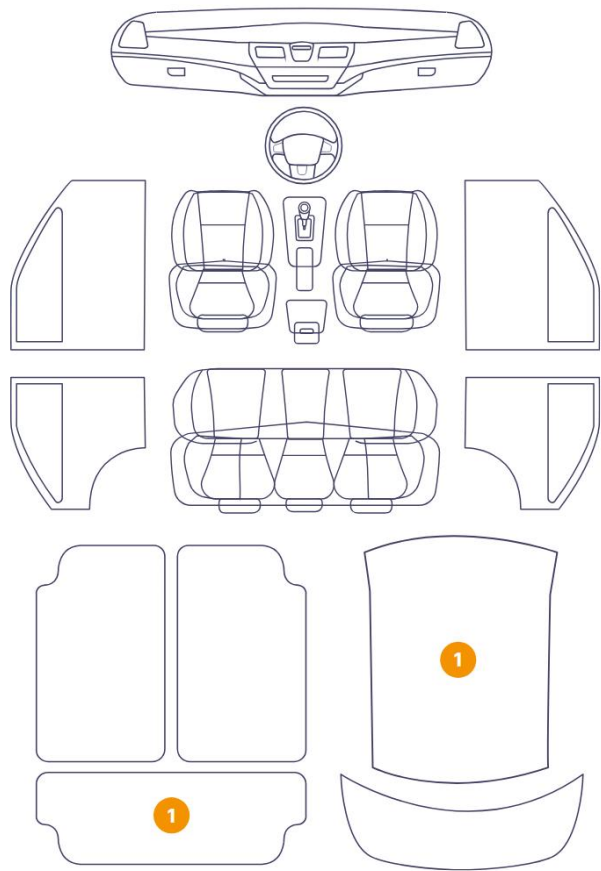
Tyre / Wheel Type	Summer	
	MABOR	205/60//R16 - 92H / 3 mm
	MABOR	205/60//R16 - 92H / 3 mm
	BRIDGESTONE	205/60//R16 - 92H / 2 mm
	BRIDGESTONE	205/60//R16 - 92H / 2 mm

Cosmetic Damage

17 Danni



2 Danni



Component		Damage	Comments
1	Trunk Carpet	Interior / Missing	
2	Rim Brand Logo / Front Right	Missing Part	
3	Rim / Front Right	Out of Bodywork / Scratch	
4	Bumper / Front	Bodywork / Dent	
5	Windshield / Front	Glass Break / Impact	
6	Rim Brand Logo / Front Left	Missing Part	
7	Wing Expander / Front Left	Paint / Scratch / Line	
8	Door / Front Left	Bodywork / Dent	
9	Door / Back Left	Paint / Scratch / Line	
10	Fender / Back Left	Bodywork / Dent	
11	Rim Brand Logo / Back Left	Missing Part	
12	Bumper / Back	Bodywork / Dent	

13	Rim Brand Logo / Back Right	Missing Part
14	Fender / Back Right	Bodywork / Dent
15	Door / Back Right	Bodywork / Dent
16	Door / Front Right	Bodywork / Dent
17	Fender / Front Right	Paint / Scratch / Line
18	Rearview Mirror / Front Center	Interior / Broken
19	Other	Paint / Chemical Damage



1. Trunk Carpet
Interior / Missing -



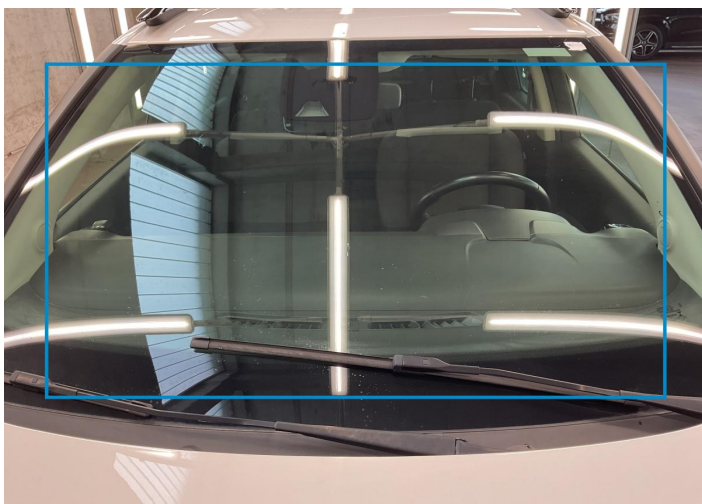
2. Rim Brand Logo / Front Right
Missing Part -



3. Rim / Front Right
Out of Bodywork / Scratch -



4. Bumper / Front
Bodywork / Dent -



5. Windshield / Front
Glass Break / Impact -



6. Rim Brand Logo / Front Left
Missing Part -



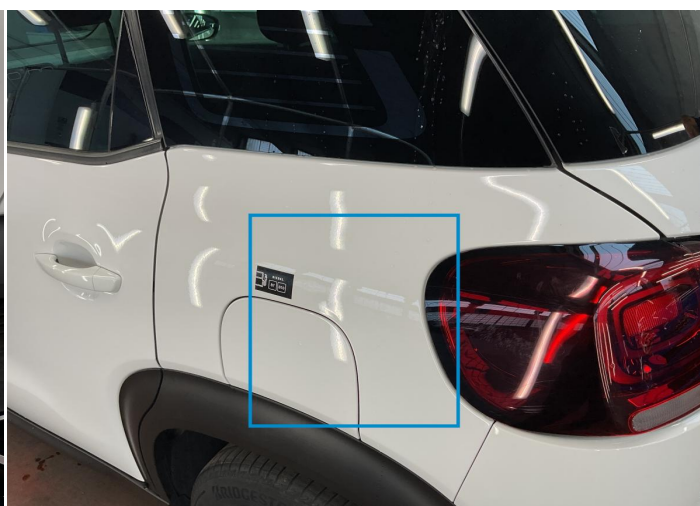
7. Wing Expander / Front Left
Paint / Scratch / Line -



8. Door / Front Left
Bodywork / Dent -



9. Door / Back Left
Paint / Scratch / Line -



10. Fender / Back Left
Bodywork / Dent -



11. Rim Brand Logo / Back Left
Missing Part -



12. Bumper / Back
Bodywork / Dent -



13. Rim Brand Logo / Back Right
Missing Part -



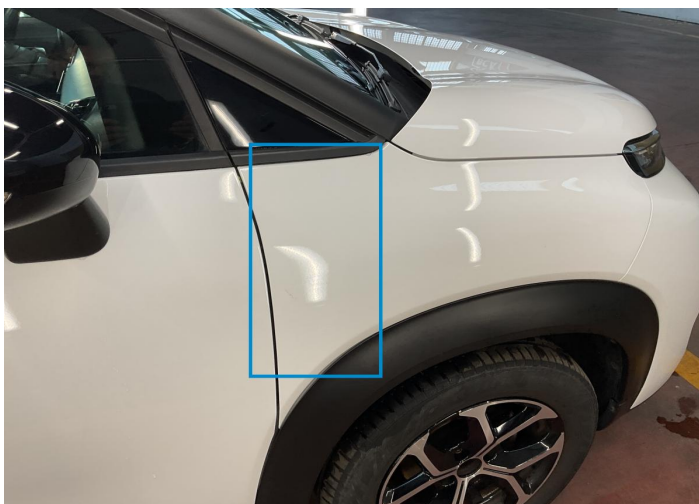
14. Fender / Back Right
Bodywork / Dent -



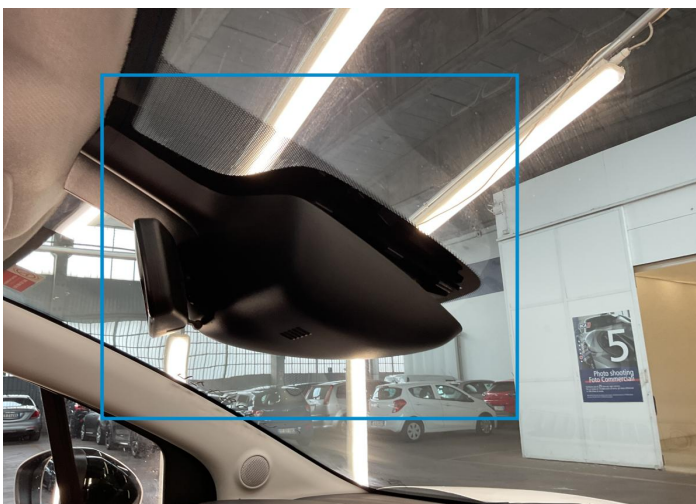
15. Door / Back Right
Bodywork / Dent -



16. Door / Front Right
Bodywork / Dent -



17. Fender / Front Right
Paint / Scratch / Line -



18. Rearview Mirror / Front Center
Interior / Broken -



19.
Paint / Chemical Damage -

Mechanical Condition

Engine

Vehicle Start - up	✓	Engine Starts	✓
Engine Leak Visible	✓		

Clutch

Clutch Functioning	✓
--------------------	---

Equipments Test

Other Equipments	✓	AC / Heating System	✓
------------------	---	---------------------	---

Levels

Brakes Fluid	✓	Coolant Fluid	✓
--------------	---	---------------	---

Test Drive Inspection

Other Checks

Brakes	✓	Steering	✓
Suspension	✓		

Equipments Test

Steering Noise / Anomaly	✓
----------------------------	---

Engine

Power Loss	✓	Fume Quantity	✓
Engine Noise	✓		

Gearbox

Manual Gearbox	✓
----------------	---

General

Test Driven Status	✓
--------------------	---

✓ **No troubles detected, good condition or correct tests, according to vehicle age and mileage**

! **Damages or malfunction detected that requires repairs by the buyer**

NA **Not applicable**

☐ **Not tested**