



# PEUGEOT BOXER (30) BOXER TOLE 435 L4H3 BLUEHDI 140 S&S PREMIUM

VIN NO VF3YDBNFC12S71463  
Registration Number FY997YP



MOT Date



Last Service



Number of Owners



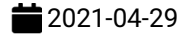
Last Service Mileage



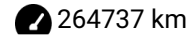
Number of Keys



First Registration Date



Odometer Reading



Country First Registered



## Inspection Report Summary

Customer	BCAuto Encheres	Report Number	P20250828112209
Inspection Date / Place	2025-08-28 / BCA GARONS	Cosmetic Grade	9

## Vehicle Summary

Vehicle Condition	Non-Runner	VAT Type	Qualified - Normal Rate
Fuel Type	Diesel	Gearbox Type	Manual
Colour	White	Engine Size (cc)	2179
Engine Size	2.2	No of Doors	4
Body Type	Box Wagon	Drive Train	Front
Seat Colour		No of Seats	3
Charging Cables		WLTP CO2 Emissions	

## Vehicle History & Documents

Service Book Available	-	Next Service Mileage	km
Previous Usage	Normal Use	Imported	
Manufacturer Warrenty			







Equipment

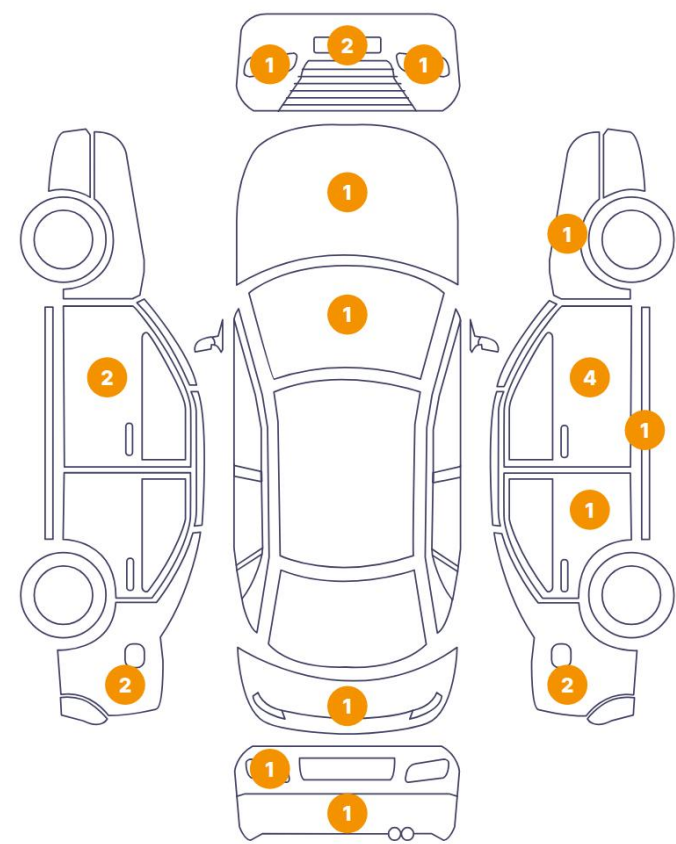
Central locking	Rear parking sensors	Cruise control	Radio
Stability control	Power assisted steering		

Equipment Details

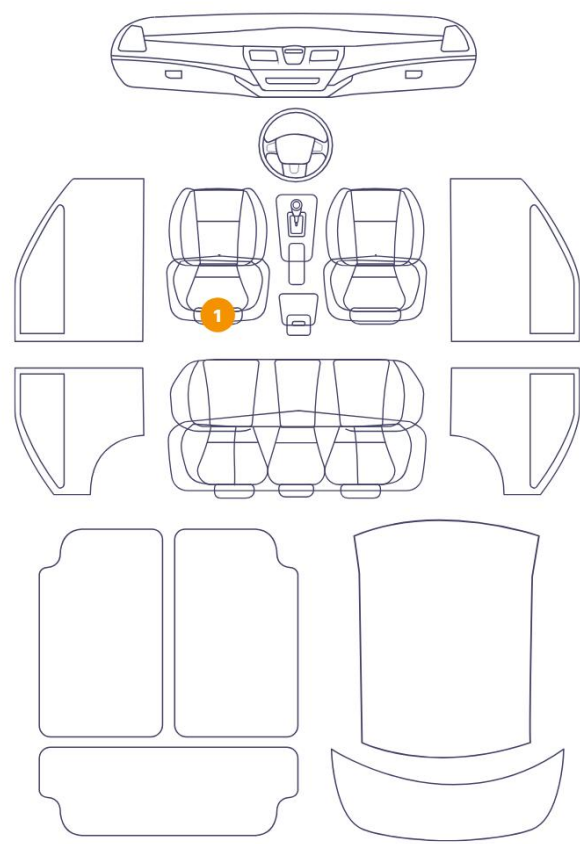
Seat Heating	No	Air Conditioning	Yes
--------------	----	------------------	-----

Cosmetic Damage

22 Dommages



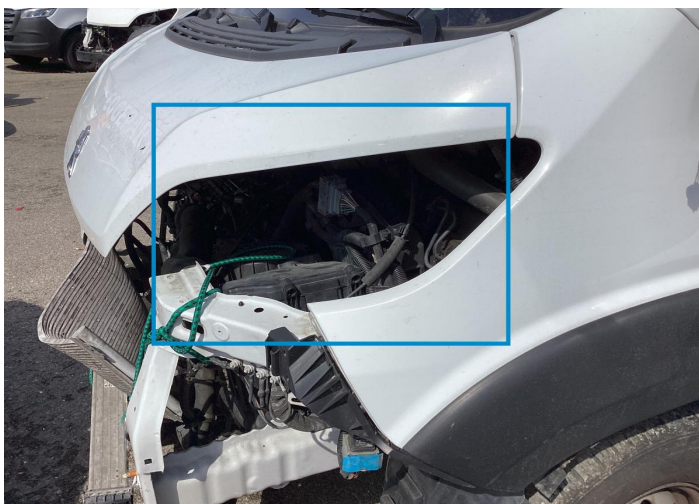
1 Dommages



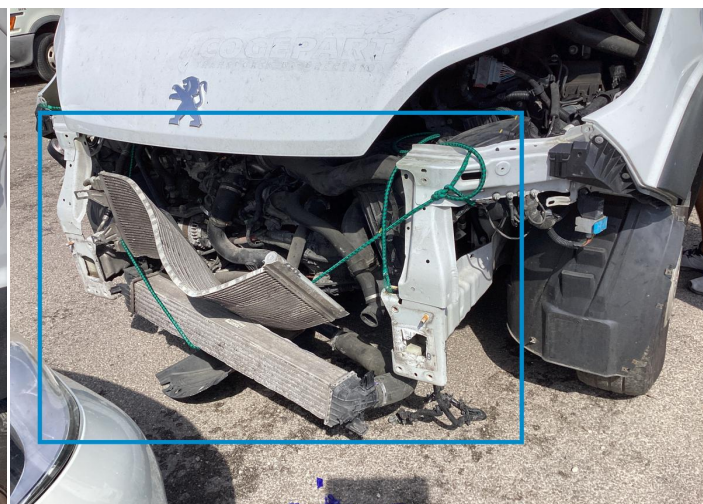
Component		Damage	Comments
1	Front Light / Front Left	Missing Part	
2	Bumper / Front	Missing Part	
3	Mirror / Front Left	Bodywork / Breakage / Crack	
4	Front Light / Front Right	Missing Part	
5	Shield Grid / Front Center	Missing Part	
6	Hood	Bodywork / Dent / Deformation	
7	Fender / Front Right	Missing Part	
8	Mirror / Front Right	Bodywork / Breakage / Crack	
9	Door / Front Right	Missing Part	
10	Door / Front Right	Bodywork / Dent / Deformation	
11	Door / Back Right	Bodywork / Dent / Dent	
12	Wing Stick / Back Right	Missing Part	
13	Wing Stick / Back Right	Missing Part	

14	Rocker Panel / Center Right	Bodywork / Dent / Deformation
15	Tailgate	Missing Part
16	Bumper / Back	Bodywork / Dent / Deformation
17	Door / Front Right	Bodywork / Dent / Deformation
18	Back Light / Left	Glass Break
19	Wing Stick / Back Left	Missing Part
20	Door Side Molding / Front Left	Missing Part
21	Seat Cushion / Front Left	Interior / Worn - out
22	Side Panel / Back Left	Bodywork / Dent / Dent
23	Windshield / Front	Glass Break





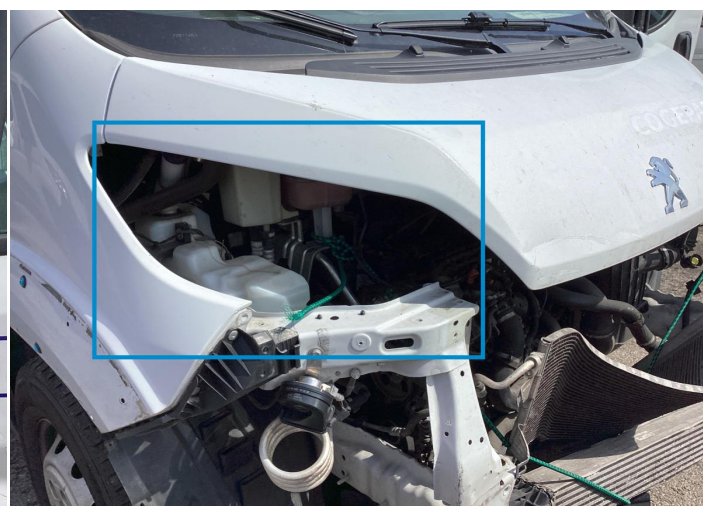
1. Front Light / Front Left  
Missing Part -



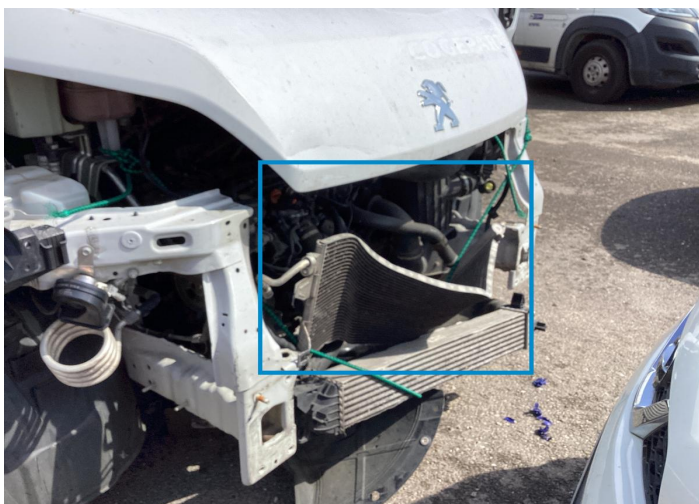
2. Bumper / Front  
Missing Part -



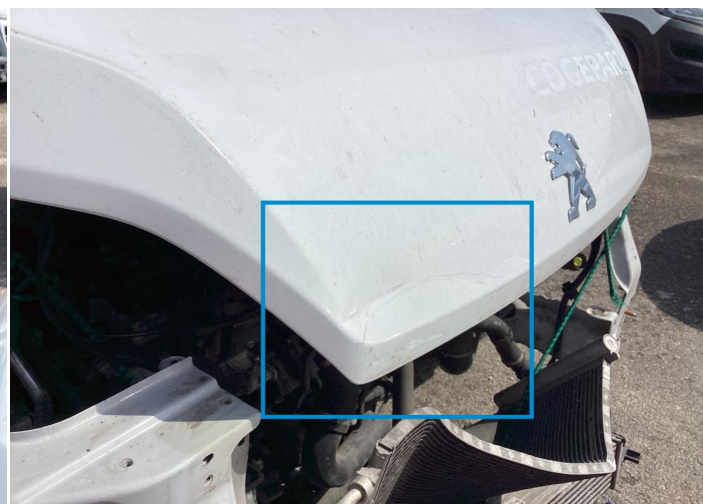
3. Mirror / Front Left  
Bodywork / Breakage / Crack -



4. Front Light / Front Right  
Missing Part -

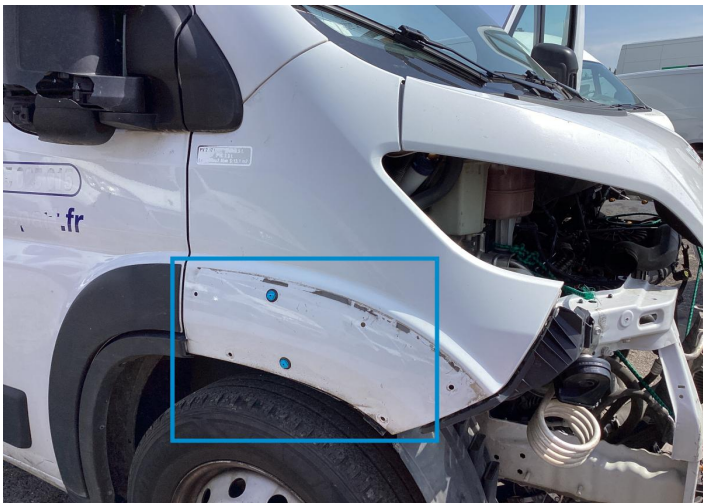


5. Shield Grid / Front Center  
Missing Part -



6. Hood  
Bodywork / Dent / Deformation -





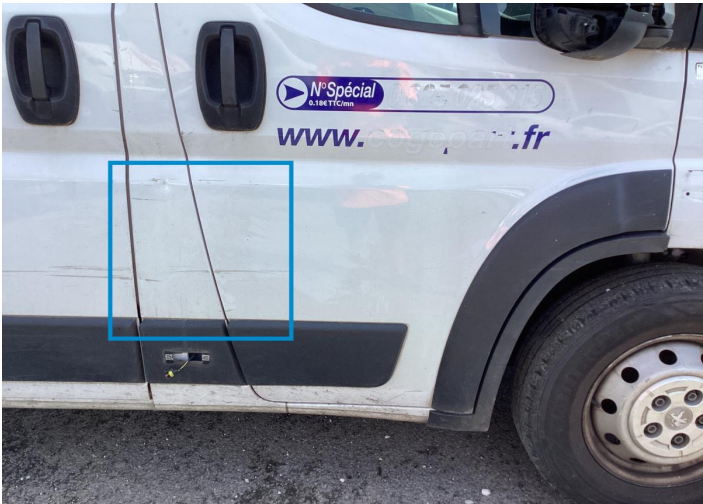
7. Fender / Front Right  
Missing Part -



8. Mirror / Front Right  
Bodywork / Breakage / Crack -



9. Door / Front Right  
Missing Part -



10. Door / Front Right  
Bodywork / Dent / Deformation -



11. Door / Back Right  
Bodywork / Dent / Dent -



12. Wing Stick / Back Right  
Missing Part -





13. Wing Stick / Back Right  
Missing Part -



14. Rocker Panel / Center Right  
Bodywork / Dent / Deformation -



15. Tailgate  
Missing Part -



16. Bumper / Back  
Bodywork / Dent / Deformation -



17. Door / Front Right  
Bodywork / Dent / Deformation -



18. Back Light / Left  
Glass Break -





19. Wing Stick / Back Left  
Missing Part -



20. Door Side Molding / Front Left  
Missing Part -



21. Seat Cushion / Front Left  
Interior / Worn - out -



22. Side Panel / Back Left  
Bodywork / Dent / Dent -



23. Windshield / Front  
Glass Break -



## Mechanical Condition

---


Tyres

Presence Anti-Theft Lock Nut 

 *No troubles detected, good condition or correct tests, according to vehicle age and mileage*

 *Damages or malfunction detected that requires repairs by the buyer*

 *Not applicable*

 *Not tested*

## Disclaimer Section

---

*The test drive is done on a flat surface and lasts about 2 minutes. The driven distance is a minimum of 300 meters, including a u-turn, an acceleration and a braking phase. The highest speed achieved during this test is 50km/h. The mechanical check is a visual and dynamic diagnosis without any disassembly. We cannot guarantee any mechanical wear part.*