



# PEUGEOT BOXER (30)

## BOXER TOLE 435 L4H2 2.2 HDi 120 PACK CD CLIM

VIN NO VF3YDBMFC12059666  
Registration Number BV878LR



MOT Date	Number of Owners	Number of Keys	Odometer Reading
-	-	1	195198 km
Last Service	Last Service Mileage	First Registration Date	Country First Registered
-	-	2011-09-26	-

### Inspection Report Summary

Customer	BCAuto Encheres	Report Number	P20251009210632
Inspection Date / Place	2025-10-09 / BCA LENS	Cosmetic Grade	4

### Vehicle Summary

Vehicle Condition	Non-Runner	VAT Type	Exempt Rate
Fuel Type	Diesel	Gearbox Type	Manual
Colour	White	Engine Size (cc)	2198
Engine Size	2.2	No of Doors	5
Body Type	Box Wagon	Drive Train	Front
Seat Colour		No of Seats	3
Charging Cables		NEDC CO2 Rating (q/km)	240
Engine Rating CV		Metalic Colour	Yes
Accident Damage	No	Euro Emission	

### Vehicle History & Documents

Service Book Available	Present	Next Service Mileage	km
Previous Usage	Normal Use	Imported	No
Manufacturer Warrenty			





Equipment

Central locking

Cruise control

Power assisted steering

Radio

Front fog lamps

Equipment Details

Seat Heating

No

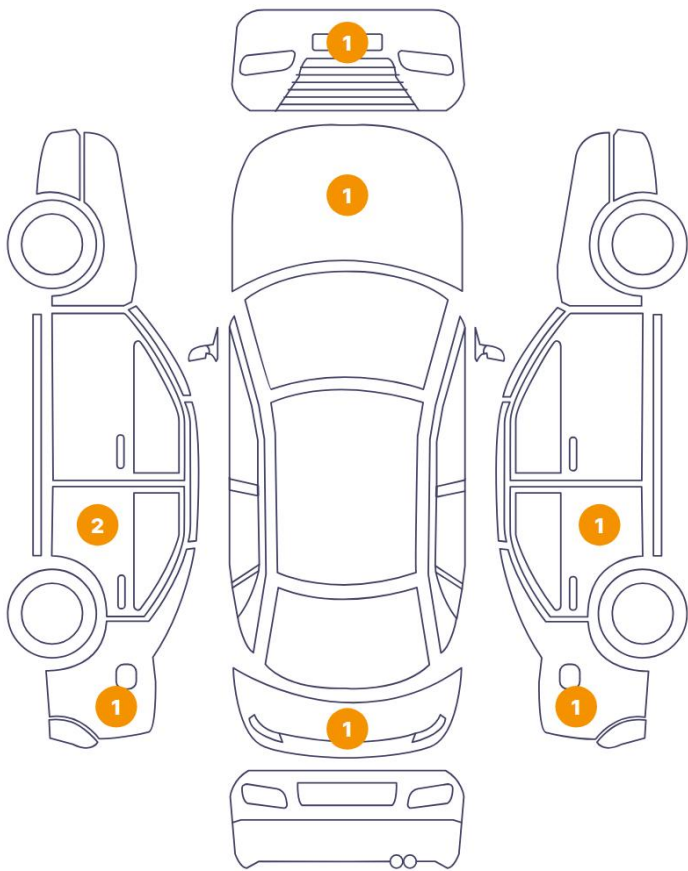
Air Conditioning

Yes

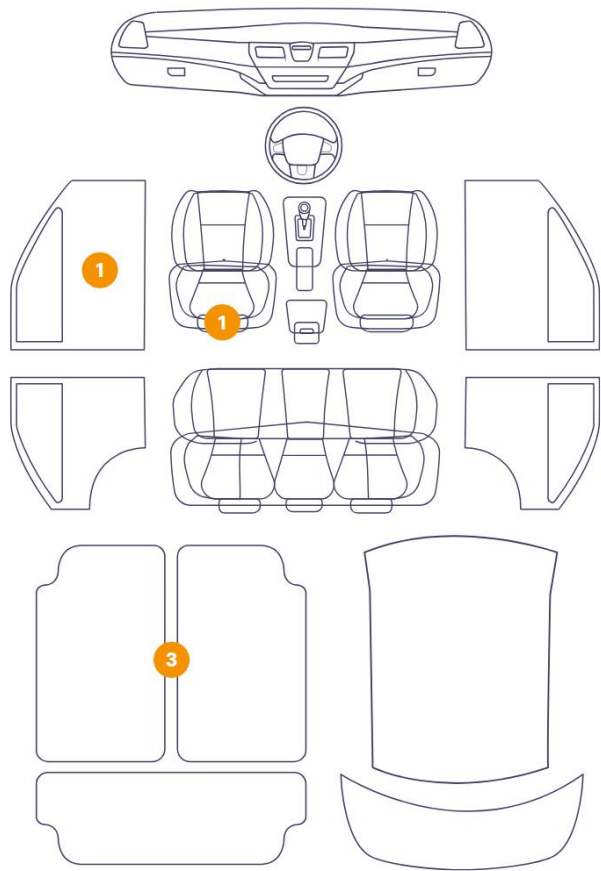


Cosmetic Damage

8 Dommages



5 Dommages



Component		Damage	Comments
1	Panel Filling / Front Left	Interior / Dirty	
2	Fender / Back Right	Bodywork / Dent / Deformation	
3	Tailgate	Bodywork / Dent / Deformation	
4	Floor Carpet	Interior / Dirty	
5	Floor Carpet	Interior / Dirty	
6	Seat / Front Left	Interior / Ripped	
7	Door / Back Right	Bodywork / Dent / Deformation	
8	Floor Carpet	Interior / Dirty	
9	Shield / Front	Paint / Scratch / Line	
10	Side Panel	Paint / Scratch / Line	
11	Fender / Back Left	Bodywork / Poor Previous Repair	
12	Hood	Paint / Poor Previous Repair	

13 Door / Back Left

Bodywork / Dent / Deformation



1. Panel Filling / Front Left  
Interior / Dirty -



2. Fender / Back Right  
Bodywork / Dent / Deformation -



3. Tailgate  
Bodywork / Dent / Deformation -



4. Floor Carpet  
Interior / Dirty -



5. Floor Carpet  
Interior / Dirty -

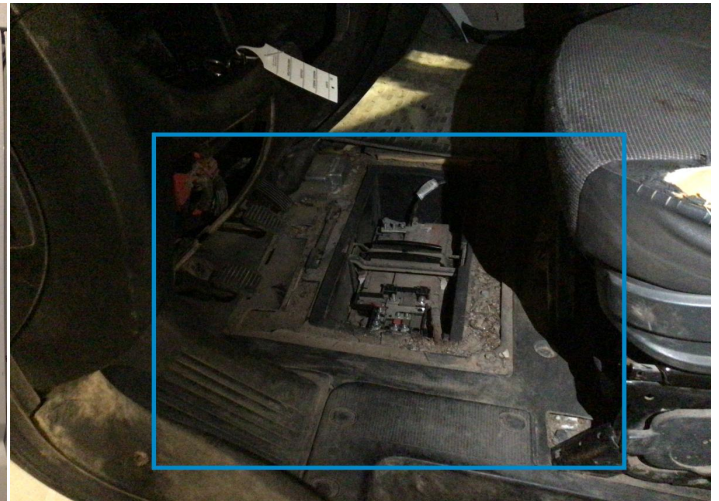


6. Seat / Front Left  
Interior / Ripped -





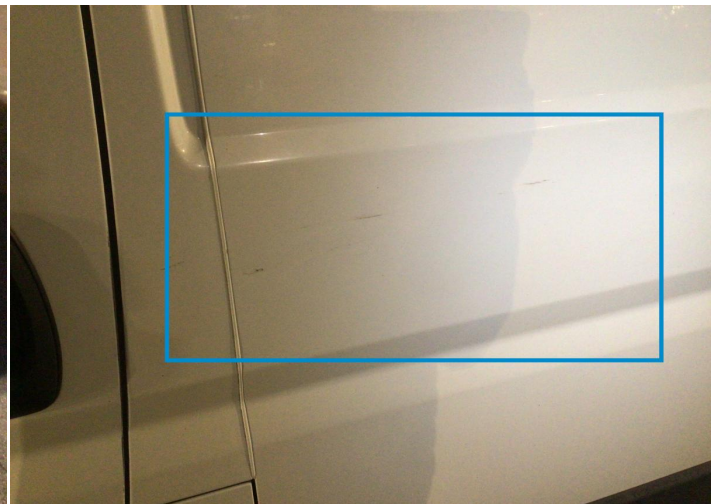
7. Door / Back Right  
Bodywork / Dent / Deformation -



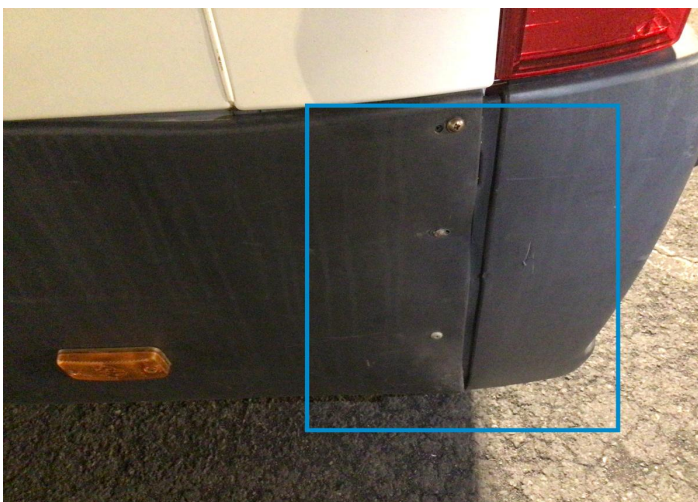
8. Floor Carpet  
Interior / Dirty -



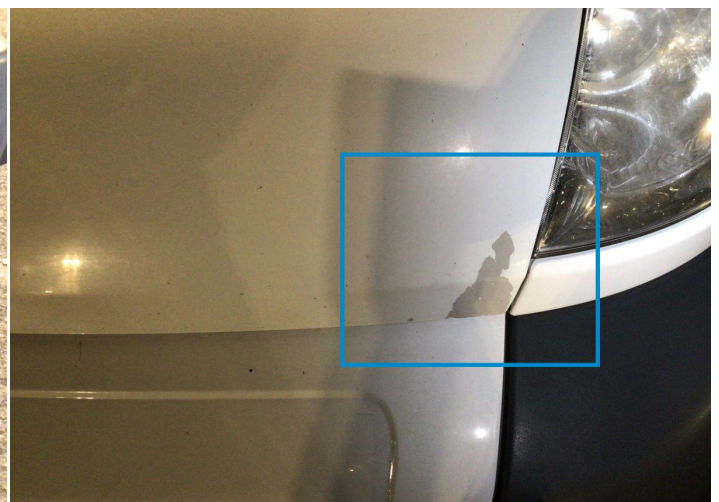
9. Shield / Front  
Paint / Scratch / Line -



10. Side Panel  
Paint / Scratch / Line -



11. Fender / Back Left  
Bodywork / Poor Previous Repair -



12. Hood  
Paint / Poor Previous Repair -





13. Door / Back Left  
Bodywork / Dent / Deformation -

Mechanical Condition


Tyres

Presence Anti-Theft Lock Nut 

 *No troubles detected, good condition or correct tests, according to vehicle age and mileage*

 *Damages or malfunction detected that requires repairs by the buyer*

 *Not applicable*

 *Not tested*

Disclaimer Section

*The test drive is done on a flat surface and lasts about 2 minutes. The driven distance is a minimum of 300 meters, including a u-turn, an acceleration and a braking phase. The highest speed achieved during this test is 50km/h. The mechanical check is a visual and dynamic diagnosis without any disassembly. We cannot guarantee any mechanical wear part.*