



PEUGEOT 107

107 70 2-Tronic

VIN NO VF3PMCFAC88356553
Registration Number AC88356553



MOT Date

2027-06-01

Last Service

-

Number of Owners

2

Last Service Mileage

-

Number of Keys

2

First Registration Date

2009-05-14

Odometer Reading

58653 km

Country First Registered

Germany

Inspection Report Summary

Customer	BCA Online	Report Number	P20250925085001
Inspection Date / Place	2025-09-25 / BCA Berlin	Cosmetic Grade	5

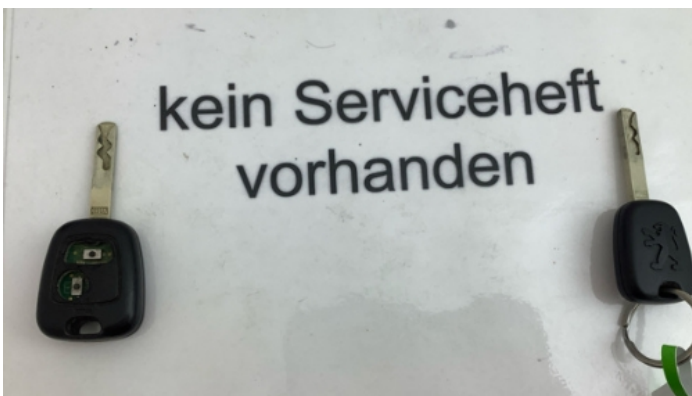
Vehicle Summary

Vehicle Condition	Runner	VAT Type	Margin
Fuel Type	Petrol	Road Worthy	Unknown
Colour		Engine Size (cc)	998
Engine Size	1.0	No of Doors	3
Body Type	Sedan	Drive Train	Front
Seat Colour		No of Seats	4
Seat Covering Name		Seat Covering	Cloth
Charging Cables		NEDC CO2 Rating (q/km)	109
Gearbox Type	Automatic		

Vehicle History & Documents

Service Book Available	Missing	Next Service Mileage	km
Previous Usage		Imported	No
Manufacturer Warranty			





Equipment

Airbag Status	Anti-lock braking	Stability control	Central locking
Alloys wheels	Auxiliary Socket	CD Player	Radio

Equipment Details

Air Conditioning	Yes	Alloy Wheel Size	14
Extra Wheel / Tyre Set	Winter Tyres		

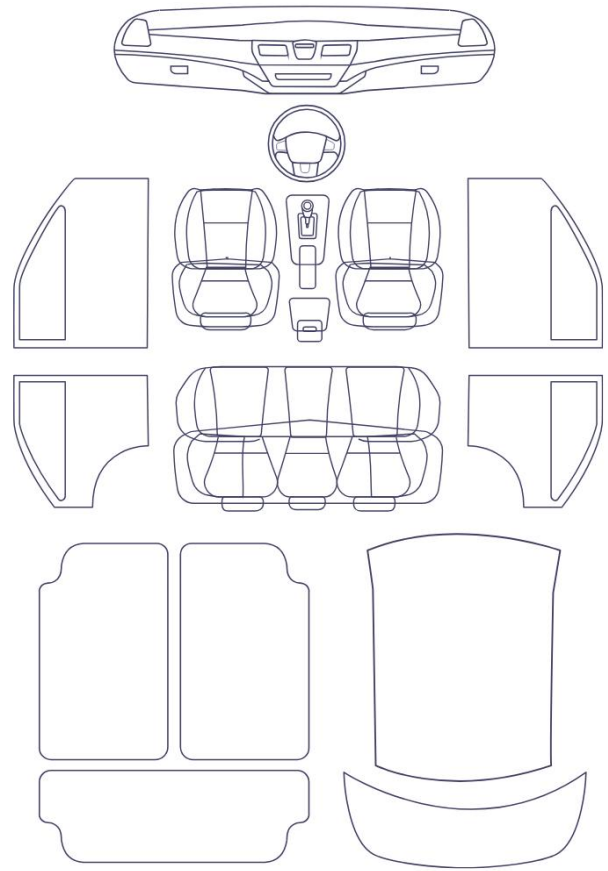
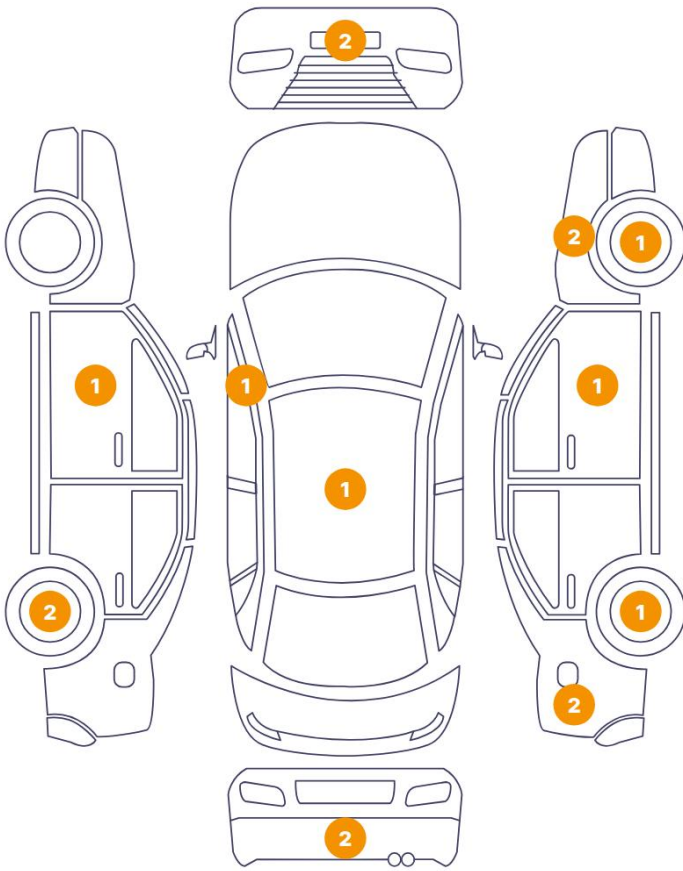
Wheels & Tyres

Extra Wheel - 1 Tyre Depth	6	Extra Wheel - 2 Tyre Depth	6
Extra Wheel - 3 Tyre Depth	6	Extra Wheel - 4 Tyre Depth	6
Right Front Tyre Depth	5	Left Front Tyre Depth	5
Right Rear Tyre Depth	5	Left Rear Tyre Depth	5

Cosmetic Damage

16 Schäden

0 Schäden



Component	Damage	Comments
1 Bumper / Back	Bodywork / Dent / Deformation	
2 Rim / Back Left	Out of Bodywork / Scratch	
3 Rim / Back Left	Out of Bodywork / Scratch	
4 Door / Front Left	Paint / Scratch / Scuff	
5 Deflector / Front Left	Paint / Scratch / Scuff	
6 Bumper / Front	Bodywork / Dent / Deformation	
7 Bumper / Front	Paint / Scratch / Scuff	
8 Fender / Front Right	Bodywork / Dent / Dent	
9 Fender / Front Right	Paint / Corrosion	
10 Rim / Front Right	Out of Bodywork / Scratch	
11 Door / Front Right	Paint / Scratch / Scuff	
12 Side Panel / Back Right	Bodywork / Dent / Dent	

13	Side Panel / Back Right	Paint / Corrosion
14	Rim / Back Right	Out of Bodywork / Scratch
15	Bumper / Back	Bodywork / Dent / Deformation
16	Roof	Paint / Scratch / Scuff



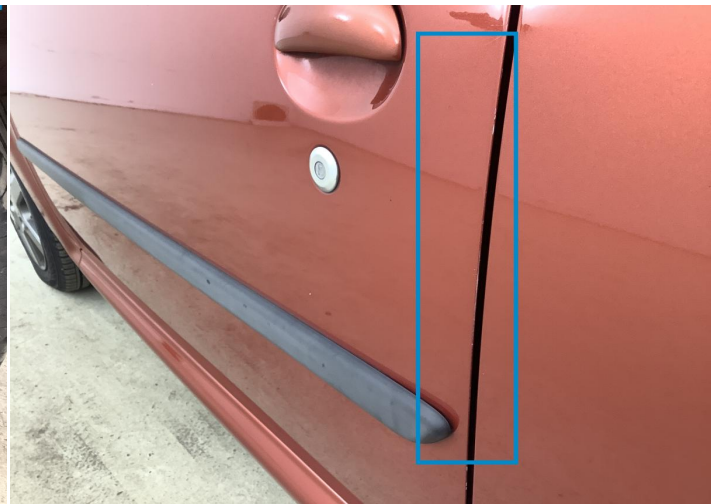
1. Bumper / Back
Bodywork / Dent / Deformation -



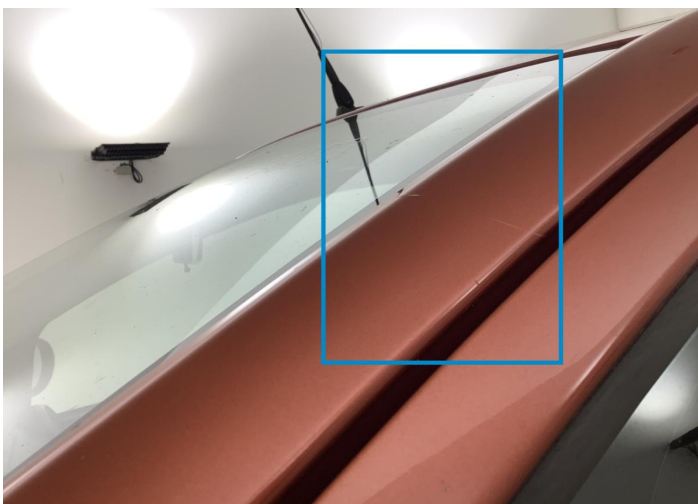
2. Rim / Back Left
Out of Bodywork / Scratch -



3. Rim / Back Left
Out of Bodywork / Scratch -



4. Door / Front Left
Paint / Scratch / Scuff -



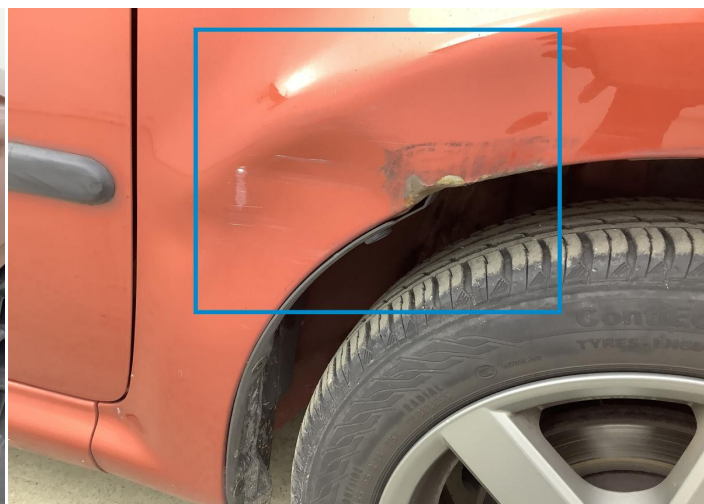
5. Deflector / Front Left
Paint / Scratch / Scuff -



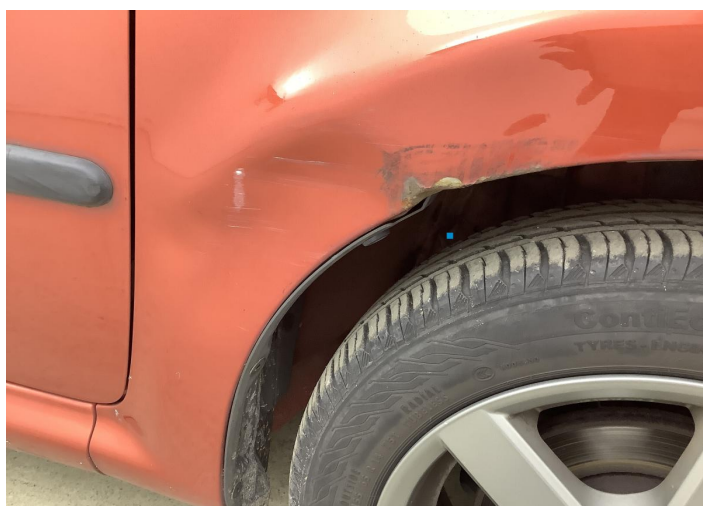
6. Bumper / Front
Bodywork / Dent / Deformation -



7. Bumper / Front
Paint / Scratch / Scuff -



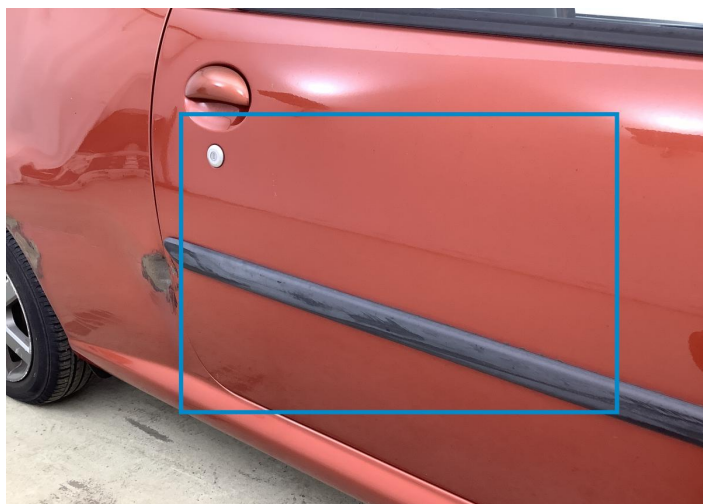
8. Fender / Front Right
Bodywork / Dent / Dent -



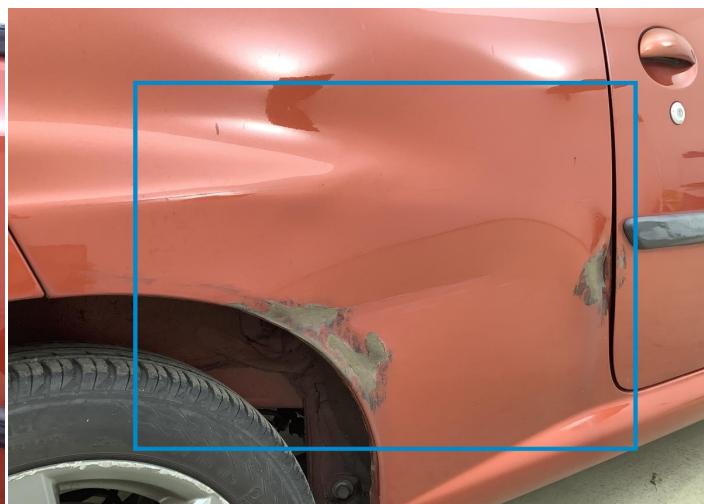
9. Fender / Front Right
Paint / Corrosion -



10. Rim / Front Right
Out of Bodywork / Scratch -



11. Door / Front Right
Paint / Scratch / Scuff -



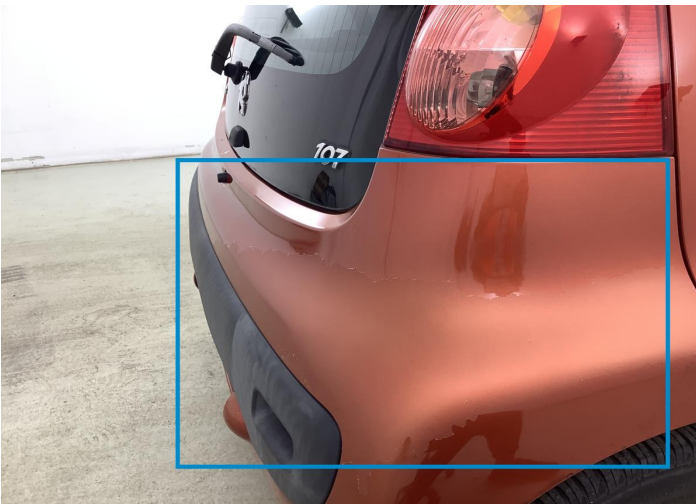
12. Side Panel / Back Right
Bodywork / Dent / Dent -



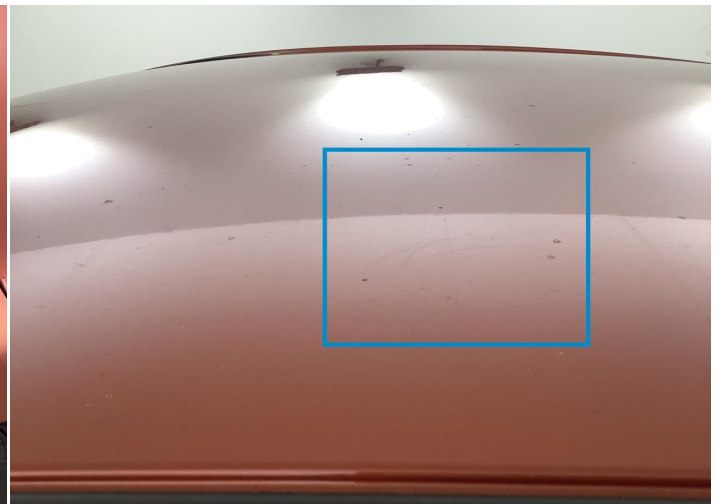
13. Side Panel / Back Right
Paint / Corrosion -



14. Rim / Back Right
Out of Bodywork / Scratch -



15. Bumper / Back
Bodywork / Dent / Deformation -



16. Roof
Paint / Scratch / Scuff -

Mechanical Condition

Control Lights

ABS Warning Light	✓	ESP Fault/Traction Control Malfunction Light	✓
Airbag Warning Light	✓	Oil Pressure Warning Light	✓
Brake Warning Light	✓	Power Steering Warning Light	✓
Alternator / Battery	✓	No Dashboard Lights	✓
Display Defect	✓	Service Light	✓
Tire Pressure Monitoring System	✓		

Engine

Engine Status / EML	✓	Engine Leak Visible	✓
Engine Starts	✓		

Gearbox

Gear Box	✓
----------	---

Levels

Brakes Fluid	✓	Coolant Fluid	✓
--------------	---	---------------	---

Equipments Test

Central Locking	✓	Audio Equipment	✓
Other Equipments	✓		

Test Drive Inspection

Engine

Engine Noise



The Gears Scratch / Skip /
Abnormal Operation



Power Loss



Fume Quantity



Brake

Brake System Anomaly



Steering Wheel

Steering | Noise / Anomaly



General

Test Driven Status



 **No troubles detected, good condition or correct tests, according to vehicle age and mileage**

 **Damages or malfunction detected that requires repairs by the buyer**

 **Not applicable**

 **Not tested**

Disclaimer

Please also note the "UserGuide condition report", which shows the scope of the vehicle description.

[User Guide](#)