



PEUGEOT 3008

3008 Puretech 130ch S&S BVM6 Style

VIN NO VF3MRHNSMKS466525
Registration Number GD251YM



MOT Date	Number of Owners	Number of Keys	Odometer Reading
-	-	1	67443 km
Last Service	Last Service Mileage	First Registration Date	Country First Registered
-	-	2020-10-06	-

Inspection Report Summary

Customer	BCAauto Encheres	Report Number	P20251009161315
Inspection Date / Place	2025-10-09 / BCA BETHUNE	Cosmetic Grade	1

Vehicle Summary

Vehicle Condition	Non-Runner	VAT Type	Exempt Rate
Fuel Type	Petrol	Gearbox Type	Manual
Colour	Light Grey	Engine Size (cc)	1199
Engine Size	1.2	No of Doors	5
Family	Passenger Car	Drive Train	Front
Seat Colour		No of Seats	5
Charging Cables		WLTP CO2 Emissions	
Engine Rating CV	7	Metalic Colour	Yes
Accident Damage	No	Euro Emission	

Vehicle History & Documents

Service Book Available	Present	Next Service Mileage	km
Previous Usage	Normal Use	Imported	No
Manufacturer Warrenty			



Equipment

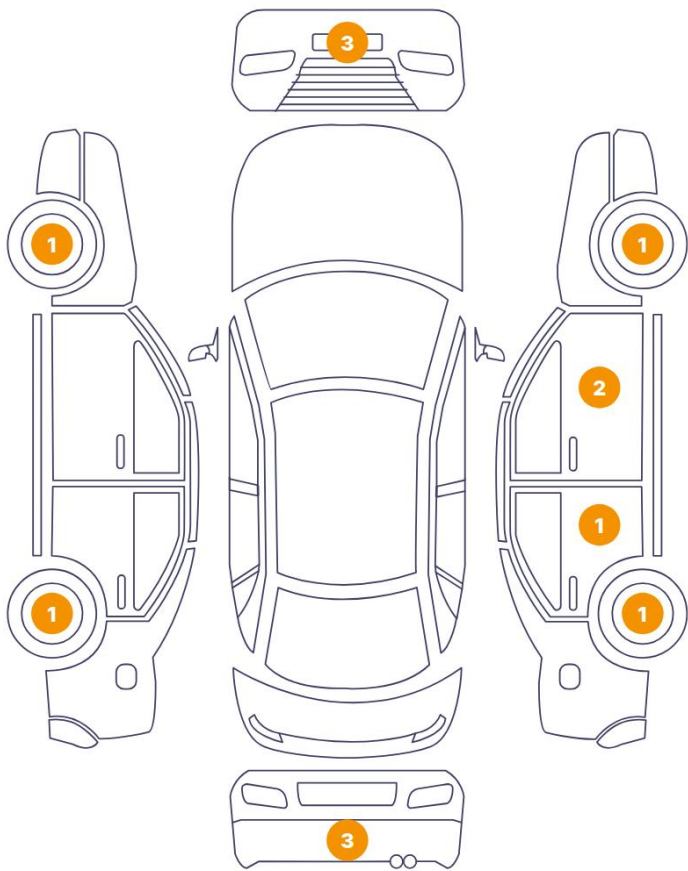
Central locking	Rear parking sensors	Cruise control	Power assisted steering
Radio	Alloys wheels	Front fog lamps	Satellite navigation

Equipment Details

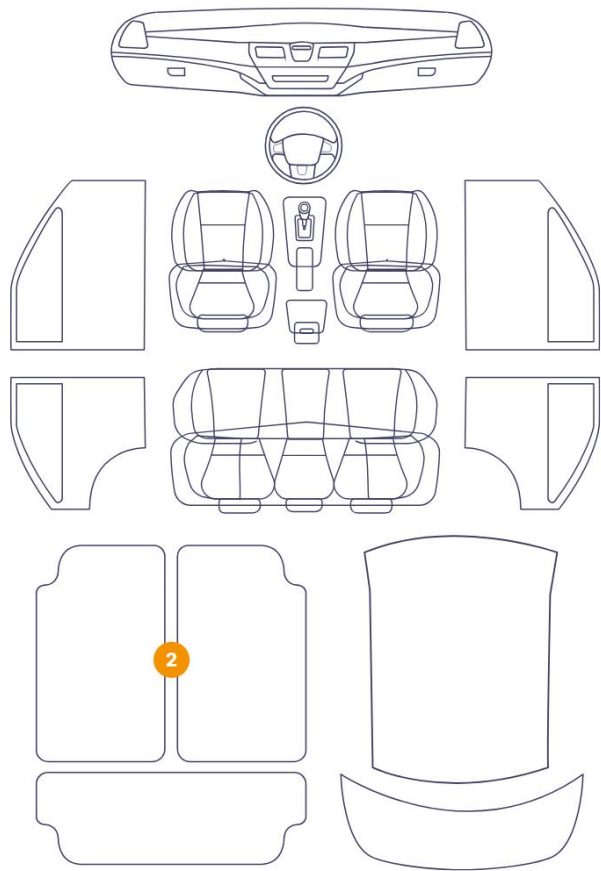
Seat Heating	Front	Air Conditioning	Yes
Sunroof Type	Tilt/Slide Steel		

Cosmetic Damage

13 Dommages



2 Dommages



Component		Damage	Comments
1	Floor Carpet	Interior / Dirty	
2	Corner Bumper / Front Right	Paint / Scratch / Scuff	
3	Floor Carpet	Interior / Dirty	
4	Door / Front Right	Paint / Scratch / Line	
5	Bumper / Front	Paint / Scratch / Scuff	
6	Corner Bumper / Back Left	Paint / Scratch / Scuff	
7	Corner Bumper / Front Left	Paint / Scratch / Scuff	
8	Corner Bumper / Back Right	Paint / Scratch / Scuff	
9	Rim / Back Left	Out of Bodywork / Scratch	
10	Rim / Front Right	Out of Bodywork / Scratch	
11	Bumper / Back	Paint / Scratch / Scuff	
12	Rim / Front Left	Out of Bodywork / Scratch	

13	Rim / Back Right	Out of Bodywork / Scratch
14	Door / Back Right	Paint / Scratch / Line
15	Mirror / Front Right	Paint / Scratch / Scuff



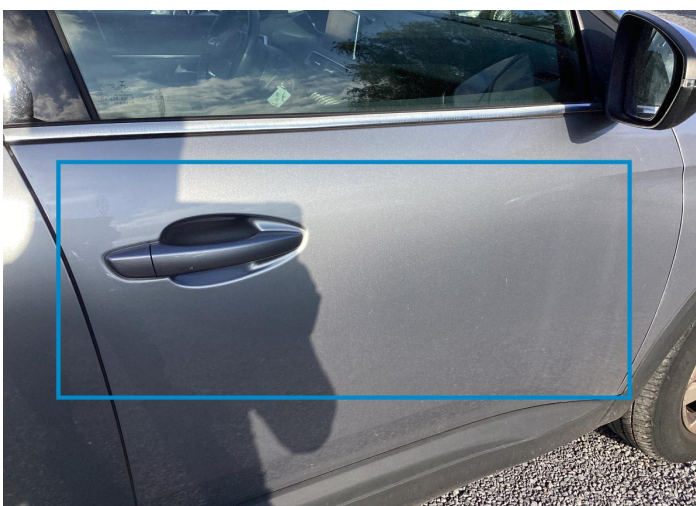
1. Floor Carpet
Interior / Dirty -



2. Corner Bumper / Front Right
Paint / Scratch / Scuff -



3. Floor Carpet
Interior / Dirty -



4. Door / Front Right
Paint / Scratch / Line -



5. Bumper / Front
Paint / Scratch / Scuff -



6. Corner Bumper / Back Left
Paint / Scratch / Scuff -



7. Corner Bumper / Front Left
Paint / Scratch / Scuff -



8. Corner Bumper / Back Right
Paint / Scratch / Scuff -



9. Rim / Back Left
Out of Bodywork / Scratch -



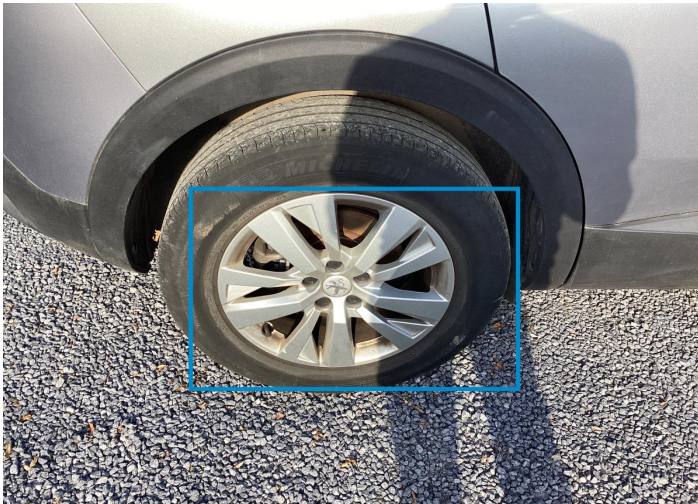
10. Rim / Front Right
Out of Bodywork / Scratch -



11. Bumper / Back
Paint / Scratch / Scuff -



12. Rim / Front Left
Out of Bodywork / Scratch -



13. Rim / Back Right
Out of Bodywork / Scratch -



14. Door / Back Right
Paint / Scratch / Line -



15. Mirror / Front Right
Paint / Scratch / Scuff -

Mechanical Condition


Tyres

Presence Anti-Theft Lock Nut 

 *No troubles detected, good condition or correct tests, according to vehicle age and mileage*

 *Damages or malfunction detected that requires repairs by the buyer*

 *Not applicable*

 *Not tested*

Disclaimer Section

The test drive is done on a flat surface and lasts about 2 minutes. The driven distance is a minimum of 300 meters, including a u-turn, an acceleration and a braking phase. The highest speed achieved during this test is 50km/h. The mechanical check is a visual and dynamic diagnosis without any disassembly. We cannot guarantee any mechanical wear part.