



Expertise

Protocol number: 39729520  
Order No. / Reference: 24733642  
Inspection date: 14 May 2025

Manufacturer: Peugeot

Model: 5008 BlueHDi 130 EAT8 Allure incl Business-Paket

VIN: VF3MCYHZRLL058895



Vehicle details	
Manufacturer / Type / Model / Equipment	
Peugeot 5008 BlueHDi 130 EAT8 Allure incl Business-Paket	
Vehicle Identification number	VF3MCYHZRLL058895
Mileage (Read)	190,945 km
First registration	17 Sept 2020
Number of holders	3
Next periodical technical inspection	12/2025
(Report not on hand)	
Power / Engine displacement	96 kw / 1,499 ccm
Fuel type / Cylinder	Diesel / 4
Gearbox / Number of gears	Automatic / 8
Type of drive	Front drive
Type of vehicle	SUV
Colour / colour code	Perla Nera Schwarz Metallic
Doors / Seats	5 / 7
Upholstery type	Cloth / leather combination
Colour of upholstery	Black-Grey
Re/Import	no
Driving readiness	Roadworthy



## Vehicle details

<b>Maintenance booklet / proof</b>	digital proof / complete	<b>Next maintenance in</b>	28,700 km
<b>Last maintenance on / at</b>	02/2025 at 182,650 km		
<b>Key is / should be</b>	2 / 2	<b>FZG documents</b>	ZB#2 (B) was available (copy), ZB#1 (S) was not available
		<b>Letter No.</b>	GT562070
<b>Previous damage / Accident</b>	Detectable	<b>Repainting</b>	None detectable
<b>Inspection conditions</b>	Sufficient	<b>Lifting equipment / pit</b>	yes
<b>Test drive</b>	Not performed	<b>Engine function test</b>	Performed
<b>Driving readiness</b>	Roadworthy		
<b>Manufacturer key number/ type code number</b>	3003 / AZJ 00105		
<b>Emission standard</b>	EURO6;WLTP;AM;PI/CI; M, N1 I	<b>Fine dust sticker</b>	
<b>Permitted total weight</b>	2,210 kg	<b>Empty weight</b>	

## Tyres

### Mounted tyres

#	Tyre size	Type of tyre	Manufacturer	Tread depth
1)	225/55 R18 102V	Winter tyres on Light alloy	Michelin	6mm / 6mm
2)	225/55 R18 102V	Winter tyres on Light alloy	Michelin	5mm / 5mm

### Additional tyres

#	Tyre size	Type of tyre	Manufacturer	Tread depth
1)	225/55 R18 102V	Summer tyres on Light alloy	Michelin	4mm / 4mm
2)	225/55 R18 102V	Summer tyres on Light alloy	Michelin	4mm / 4mm

**Legend: Tread depth information for tires on the left is in the first place, for tires on the right is in the second place on the axle in the direction of travel**

## Equipment

### Standard equipment

- ABS (anti-lock braking system)
- Airbag for driver and front passenger
- Airbag: Curtain airbags front and rear
- Electrically folding exterior mirrors with LED access lighting
- Exterior mirror caps painted in vehicle color
- Hill start assist
- Chrome trim strips in the lower part of the doors
- aluminum roof rails
- Decorative inserts made of fabric "Brumeo" or "Texa" for door panels and dashboard
- tachometer
- EBV (Electronic Brake Force Distribution)
- Front parking aid, acoustic and visual
- Misfueling protection
- Electric windows front and rear
- Electric parking brake
- Forward collision warning
- Cruise control with speed limiter
- Belts: 3-point safety belts
- Rear window wiper
- Map pockets on the front seat backrests
- Automatic climate control (2-zone), with activated carbon filter
- LED ambient lighting in the front headliner and front footwell
- LED daytime running lights
- Steering wheel: small multifunction steering wheel flattened at the top and bottom
- Front center armrest, two-piece, with storage compartment, illuminated and air-conditioned
- Emergency braking assistant
- Peugeot Connect Box
- Radio: RCC audio system
- Radio accessories: Digital radio reception DAB+
- Rain sensor
- Tire pressure monitoring system
- Wheels: Tire repair kit (compressor + puncture spray)
- Power steering, electric
- Seats: Passenger seat height adjustable
- Seats: Driver's seat height adjustable
- lane keeping assistant with steering intervention
- Stop&Start system
- 4 lashing eyes in the trunk
- Immobiliser
- Active Safety Brake
- Airbag: Side airbags front and rear
- Active Blind Spot Assist
- Electrically adjustable and heated exterior mirrors with integrated LED indicators
- On-board computer
- Chrome trim strips above the side windows
- Ceiling light at the front, 2 reading lights at the front and ceiling light with switch-off delay at the rear
- Digital instrument cluster with high-resolution 12.3" screen, adjustable and customizable
- Rear parking aid, acoustic and visual
- ESP (Electronic Stability Program) with ASR (Traction Control)
- High beam assistant
- Follow-me-home function (automatic)
- front apron in chrome look
- Transmission: 8-speed automatic transmission EAT8
- Heated rear window
- Interior mirror automatically dimming
- Child safety locks in the rear doors
- Headrests (2) front
- Headrests (3) rear
- LED lighting in blue on the door panel and cup holder
- LED rear lights
- Steering wheel: multifunction leather steering wheel
- Light sensor
- Makeup mirror
- Fatigue warning
- Fog light
- Particle filter: FAP soot particle filter diesel
- Upholstery: fabric/synthetic leather
- Radio: Mirror Screen
- Radio accessories: Multifunctional touchscreen with 8" color screen
- Wheels: alloy wheels "Detroit" 18"
- Shift paddles on the steering wheel
- Seats: 3 separate individual seats in row 2
- Seats: Passenger seat foldable
- Seats: Manual lumbar support for driver's seat
- Socket (3) 12 Volt
- Traffic sign recognition
- Preparation for WEBASTO parking heater
- Central locking can be activated with remote control from inside

### Extra equipment

- inductive charging station
- Paint finish: metallic
- Panoramic tilt/sliding roof with electric blinds (blue LED lighting)
- Package: Easy Package (rear view camera with 360° surrounding view - Park Assist: Active parking system with automatic steering for parallel and perpendicular parking spaces)



- Removable trailer coupling (with removable ball head without tools)
- Seats: 2 additional seats for 3rd row (removable and fully retractable)
- tailgate sensor-controlled including keyless system
- Seats: Ergonomic comfort seats with AGR seal of approval (electrically adjustable driver's seat with memory function - heated front seats - massage function for driver and front passenger seats - extendable thigh support on driver and front passenger sides - electric lumbar support on driver and front passenger sides - electric seat tilt adjustment on the front passenger side)

## Brief expert findings

Documents submitted	At the time of the inspection, the registration certificate part 2 (letter) was available, but the registration certificate part 1 (certificate) was not available. (Copy)
VIN comparison	The vehicle identification number (VIN) was read and the undersigned verified that it matched the documents submitted during the inspection.
Inspection	The inspection conditions were sufficient for the assessment of the vehicle. Lifting equipment and a pit were available for examining the vehicle.
Test drive	No test drive/maneuvering was carried out during the inspection of the vehicle.
Engine function test	An engine test run was performed.
Driving readiness	The vehicle was drivable at the time of inspection.

## Value reducing factors

No.	Component group	Description
1	Mudguard - right side	Mudguard - right side - Stone chips - Smart repair
2	Door - rear right side	Door - Scratch(es) - Smart repair
3	Seat - front	Seat cover - left side - Damaged - Smart repair
4	Side panel - rear right side	Side panel - Scratch(es) - Paint
5	Door - rear right side	Door - Scratch(es) - Paint
6	Door - front right side	Door - Scratch(es) - Paint
7	Door - front left side	Door - Dent / paintcoat damage - Repair and paint
8	Bonnet	Bonnet - Stone chips - Paint

## Previous damages

No.	Previous damage	Extent of damage (Net)
1	Rear, Underbody, Provided by user / customer, from 2 Nov 2023	6.606,90 €

## Order/Scope of order

The order was placed to prepare a sales report for the vehicle described. This includes the following:

- Description of core relevant information about the vehicle
- Documentation of equipment features  
(Delivery by third-party service providers)
- Documentation of damage, defects, missing parts
- Documentation of previous damage, unrepaired previous damage, repainting
- a brief visual or functional inspection of the equipment details if possible.  
(Functional tests of driver assistance systems are not included in the scope of services!)
- a photo documentation of the vehicle



## Basis for the order

This product is based on the Alphabet Fuhrpark GmbH guidelines for vehicle returns and valuations. The expert makes the explicit findings in each individual case objectively within the framework of the specified standards based on his or her own expertise.

The vehicle inspection takes place in a disassembled state.

Damage or defects that can only be detected during disassembly/diagnosis work or through advanced knowledge remain within the scope of the prognosis risk. An extended risk exists for concealed defects caused by fraudulent deception and not identifiable by the expert.

Damage or defects resulting from normal use or wear and tear of the vehicle will be accepted according to the applicable standard.

There was no explicit identification or monetary consideration of the expected features within the product.

Features which in their nature and severity slightly exceed normal use but do not constitute unacceptable damage will be documented and identified under signs of use if necessary.

Damage or defects which, according to the underlying standard, can no longer be attributed to normal use or wear and tear are listed in the product under "Depreciating Factors".

Depending on the product specification, a monetary ID can be provided. If this takes place, the costs can be 100% d or pro rata depending on the vehicle's age and mileage.

## Previous damages

According to available information previous damages were repaired at the vehicle. Traces of repairs, which allow conclusions about the area of repair, were not recognizable during the inspection.

## Comments

- Für den montierten Radsatz wurde kein Nachweis erbracht.
- Winterradsatz ist kein Bestandteil des Auslieferungsumfangs.





Figure 1: Diagonal front (left)



Figure 2: Diagonal front (right)



Figure 3: Diagonal rear (left)



Figure 4: Diagonal rear (right)



Figure 5: Interior - front



Figure 6: Interior - rear





Figure 7: Instrument cluster



Figure 8: Instrument panel



Figure 9: interior 360° view ([Online link](#))



Figure 10: Cargo area



Figure 11: VIN



Figure 12: Mounted tyres





Figure 13: Documents



Figure 14: Additional tyres



Figure 15: Navigation



Figure 16: Misc.



Figure 17: Misc.



Figure 18: Misc.





Figure 19: Misc.

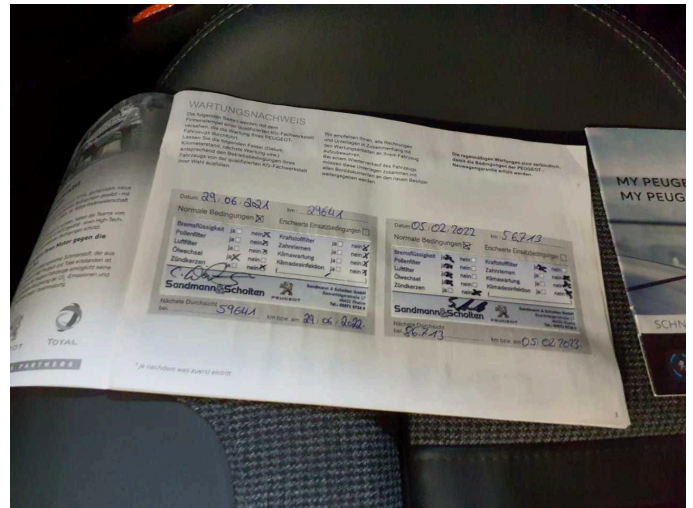


Figure 20: Misc.

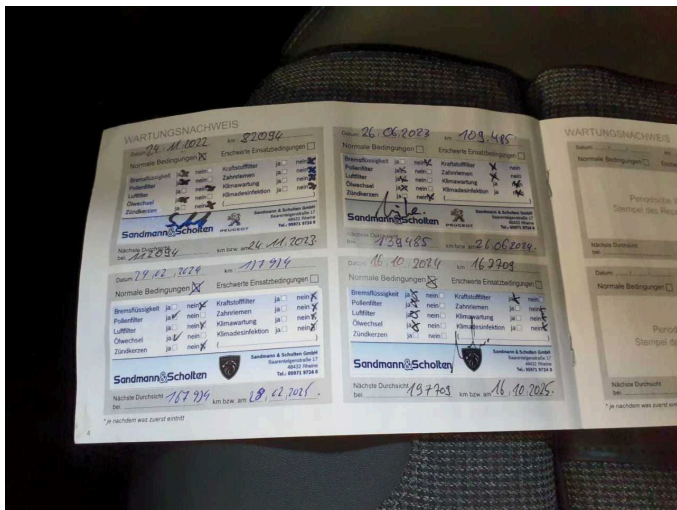


Figure 21: Misc.



Figure 22: Misc.



Figure 23: Misc.



Figure 24: Misc.



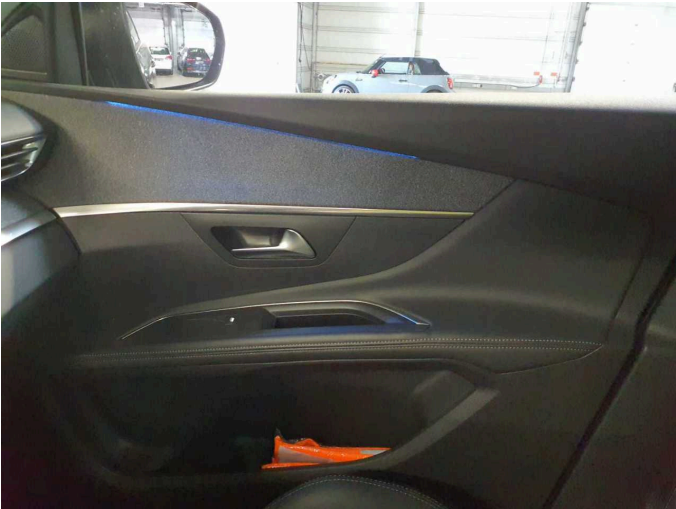


Figure 25: Misc.



Figure 26: Misc.



Figure 27: Misc.



Figure 28: Misc.



Figure 29: Misc.

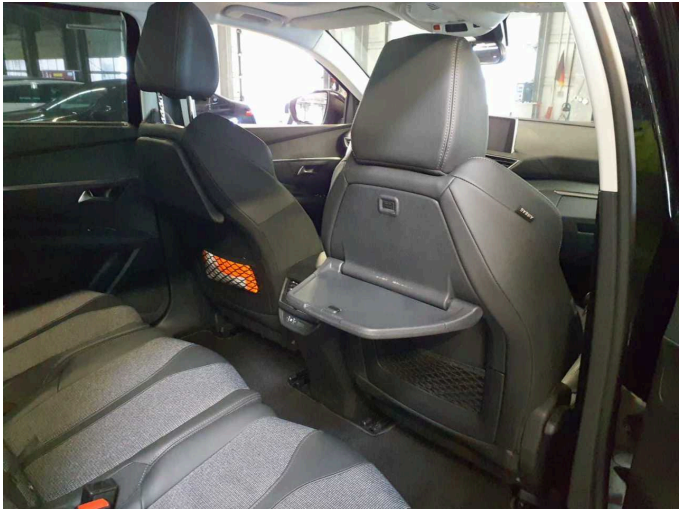


Figure 30: Misc.



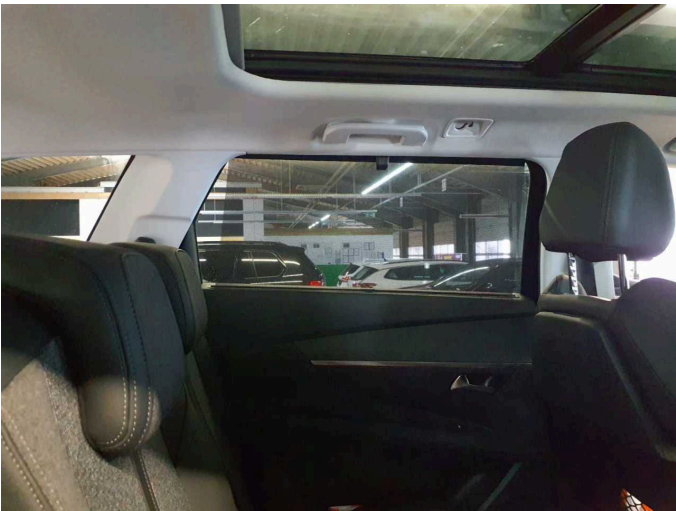


Figure 31: Misc.

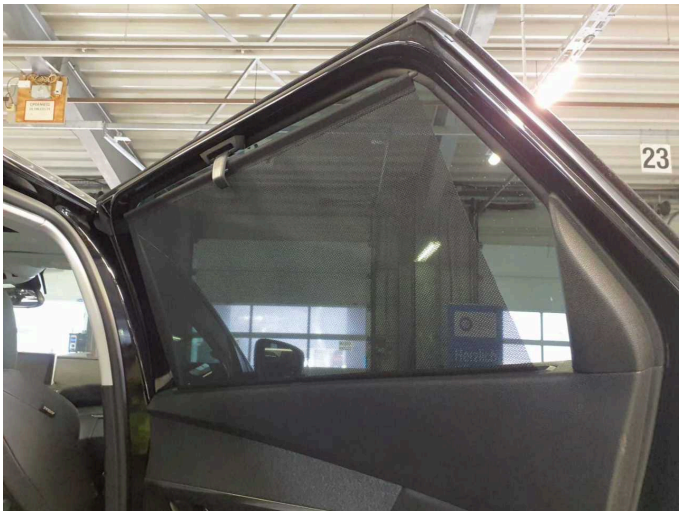


Figure 32: Misc.



Figure 33: Misc.



Figure 34: Misc.



Figure 35: Misc.



Figure 36: Misc.

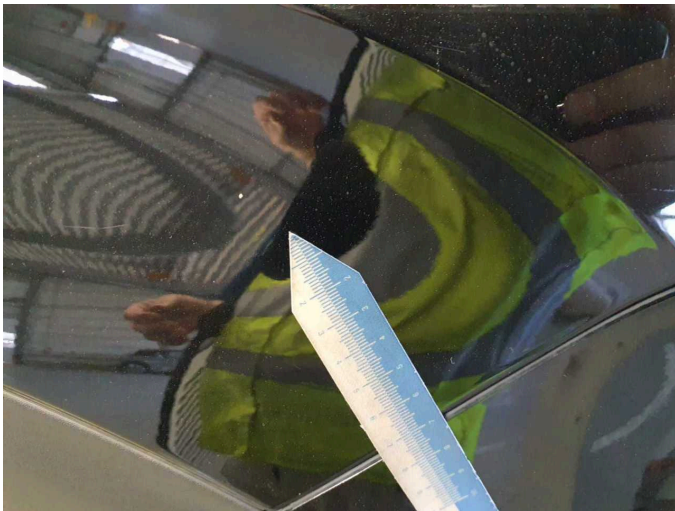




**Figure 37:** Misc.



**Damage 1:** Mudguard - right side: Mudguard - right side - Stone chips - Smart repair



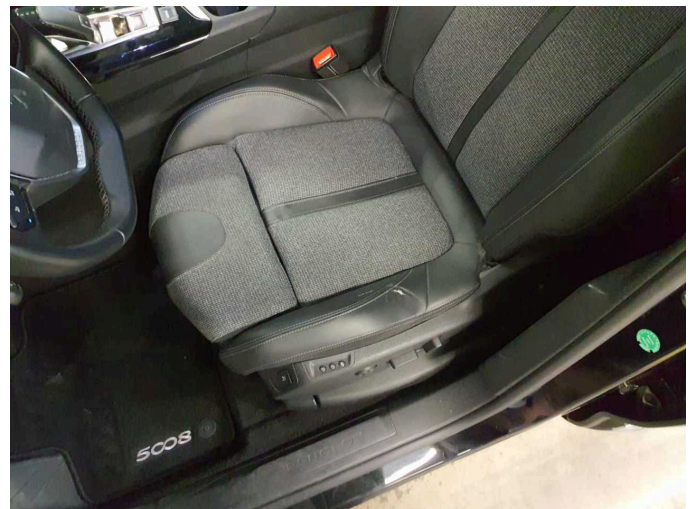
**Damage 1:** Mudguard - right side: Mudguard - right side - Stone chips - Smart repair



**Damage 2:** Door - rear right side: Door - Scratch(es) - Smart repair



**Damage 2:** Door - rear right side: Door - Scratch(es) - Smart repair



**Damage 3:** Seat - front: Seat cover - left side - Damaged - Smart repair

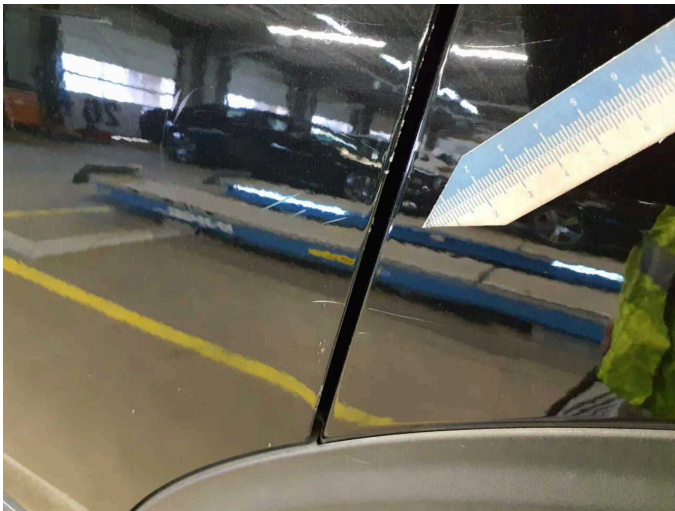




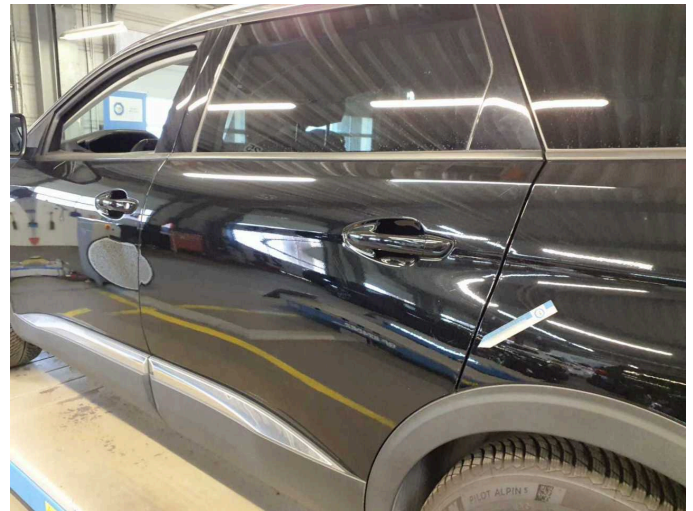
**Damage 3:** Seat - front: Seat cover - left side - Damaged - Smart repair



**Damage 4:** Side panel - rear right side: Side panel - Scratch(es) - Paint



**Damage 4:** Side panel - rear right side: Side panel - Scratch(es) - Paint



**Damage 4:** Side panel - rear right side: Side panel - Scratch(es) - Paint



**Damage 5:** Door - rear right side: Door - Scratch(es) - Paint

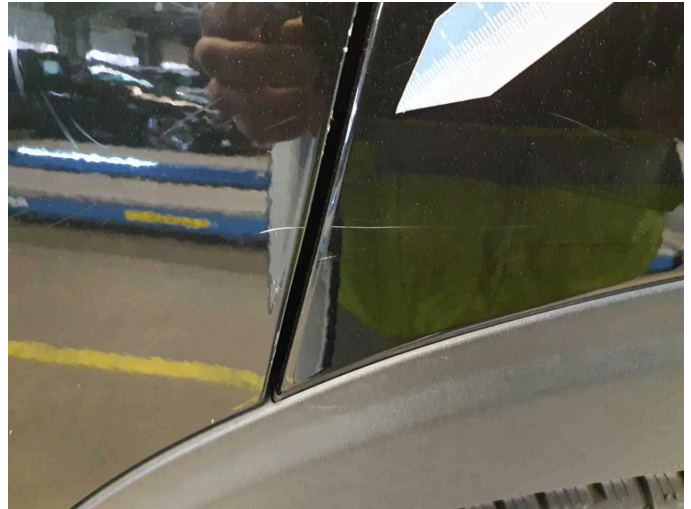


**Damage 5:** Door - rear right side: Door - Scratch(es) - Paint





**Damage 5:** Door - rear right side: Door - Scratch(es) - Paint



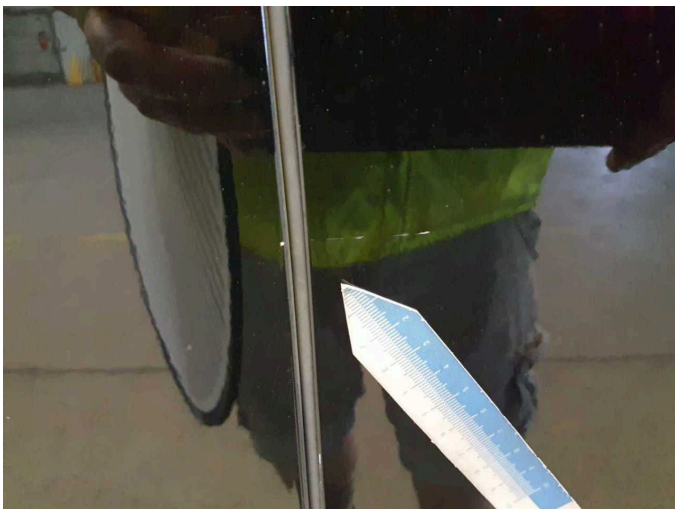
**Damage 5:** Door - rear right side: Door - Scratch(es) - Paint



**Damage 6:** Door - front right side: Door - Scratch(es) - Paint



**Damage 6:** Door - front right side: Door - Scratch(es) - Paint

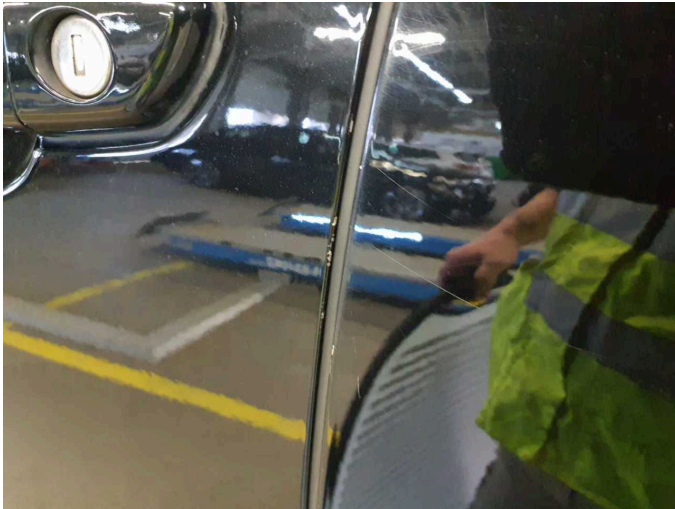


**Damage 6:** Door - front right side: Door - Scratch(es) - Paint



**Damage 7:** Door - front left side: Door - Dent / paintcoat damage - Repair and paint

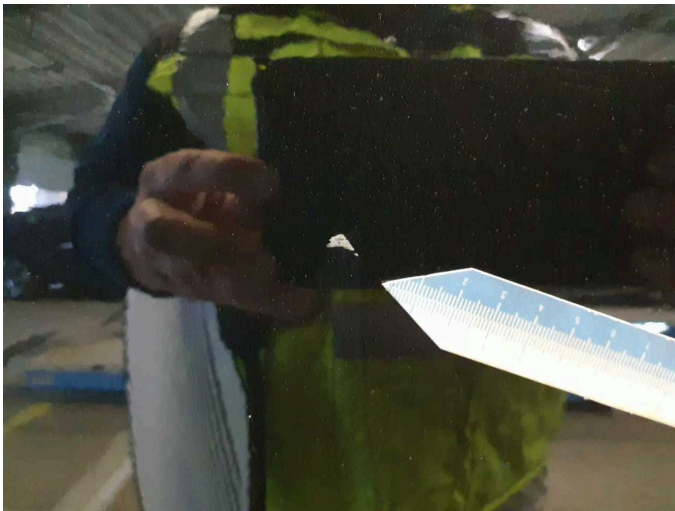




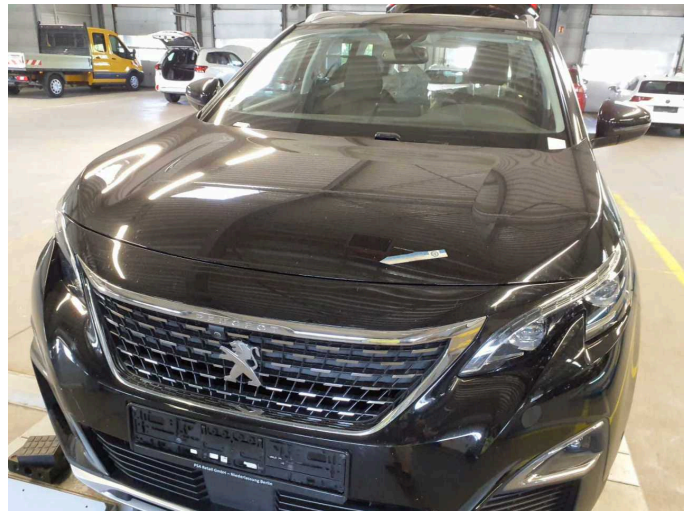
**Damage 7:** Door - front left side: Door - Dent / paintcoat damage - Repair and paint



**Damage 7:** Door - front left side: Door - Dent / paintcoat damage - Repair and paint



**Damage 7:** Door - front left side: Door - Dent / paintcoat damage - Repair and paint



**Damage 8:** Bonnet: Bonnet - Stone chips - Paint



**Damage 8:** Bonnet: Bonnet - Stone chips - Paint