



Expertise

Protocol number: 41196490  
Order No. / Reference: 25058284  
Inspection date: 20 Aug 2025

Manufacturer: Peugeot	Model: 5008 BlueHDi 130 Allure Pack
VIN: VF3MCYHZMMS135357	



Vehicle details	
Manufacturer / Type / Model / Equipment	
Peugeot 5008 BlueHDi 130 Allure Pack	
Vehicle Identification number	VF3MCYHZMMS135357
Mileage (Read)	95,358 km
First registration	28 May 2021
Number of holders	1
Next periodical technical inspection	05/2026
(Report not on hand)	
Power / Engine displacement	96 kw / 1,499 ccm
Fuel type / Cylinder	Diesel / 4
Gearbox / Number of gears	Manual / 6
Type of drive	Front drive
Type of vehicle	SUV
Colour / colour code	Perla Nera Schwarz Metallic
Doors / Seats	5 / 7
Upholstery type	Leather
Colour of upholstery	Black
Re/Import	no
Driving readiness	Roadworthy



## Vehicle details

<b>Maintenance booklet / proof</b>	Non-existent	<b>Next maintenance in</b>	29,700 km
<b>Key is / should be</b>	2 / 2	<b>FZG documents</b>	ZB#2 (B) was available (copy), ZB#1 (S) was not available
		<b>Letter No.</b>	FX945850
<b>Previous damage / Accident</b>	None detectable	<b>Repainting</b>	None detectable
<b>Inspection conditions</b>	sufficient	<b>Lifting equipment / pit</b>	yes
<b>Test drive</b>	Not performed	<b>Engine function test</b>	Performed
<b>Driving readiness</b>	Roadworthy		
<b>Manufacturer key number/ type code number</b>	3003 / AZJ 00163		
<b>Emission standard</b>	EURO6;WLTP;AP;PI/CI; M, N1 I	<b>Fine dust sticker</b>	
<b>Permitted total weight</b>	2,200 kg	<b>Empty weight</b>	

## Tyres

### Mounted tyres

#	Tyre size	Type of tyre	Manufacturer	Tread depth
1)	225/55 R18 102V	All-season tyres on Light alloy	Goodyear	5mm / 5mm
2)	225/55 R18 102V	All-season tyres on Light alloy	Goodyear	5mm / 5mm

### Additional tyres

#	Tyre size	Type of tyre	Manufacturer	Tread depth
1)	215/55 R17 98V	Winter tyres on Light alloy	Michelin	5mm / 5mm
2)	215/55 R17 98V	Winter tyres on Light alloy	Michelin	5mm / 5mm

### Replacement

Typ	Tyre size	Type of tyre	Manufacturer	Tread depth
	Tirefit	Expiration date 03/2026		

**Legend:** Tread depth information for tires on the left is in the first place, for tires on the right is in the second place on the axle in the direction of travel

## Equipment

### Standard equipment

- ABS (anti-lock braking system)
- Airbag for driver and front passenger
- Airbag: Curtain airbags front and rear
- Electrically folding exterior mirrors with LED access lighting
- Exterior mirror caps painted in body color
- Hill start assist
- Chrome trim strips in the lower part of the doors
- Aluminum roof rails
- Decorative inserts made of "Brumeo" fabric for door panels and dashboard
- Digital instrument cluster with high-resolution 12.3" screen, adjustable and customizable
- EBV (Electronic Brake Force Distribution)
- Front parking aid, acoustic and visual
- Misfueling protection
- Electric windows front and rear
- Electric parking brake
- Forward collision warning
- Cruise control with speed limiter
- Cup holder in the center console
- Heated rear window
- Interior mirror automatically dimming
- Keyless system
- Automatic air conditioning (2-zone), with activated carbon filter
- Chrome-plated loading sill protection
- Blue LED lighting on the door trim and cup holder
- LED headlights (Eco)
- Steering wheel: multifunction leather steering wheel
- Light sensor
- Makeup mirror
- Fatigue warning
- Navigation system: 3D navigation system NAC
- Emergency braking assistant
- Particle filter: FAP soot particle filter diesel
- Radio: RCC audio system
- Radio accessories: Digital radio reception DAB+
- Tire pressure monitoring system
- Wheels: Tire repair kit (compressor + puncture spray)
- Keyless start system
- Power steering, electric
- Seats: 3 separate individual seats in row 2
- Seats: Passenger seat foldable
- Seats: Manual lumbar support for driver's seat
- Socket (3) 12 Volt
- Traffic sign recognition
- Immobiliser
- Active Safety Brake and Front Collision Warning
- Airbag: Side airbags front and rear
- Active Blind Spot Assist
- Electrically adjustable and heated exterior mirrors with integrated LED indicators
- On-board computer
- Chrome trim strips above the side windows
- LED ceiling light in front, in row 2 and row 3, 2 LED reading lights in front, in row 2 and row 3
- Decorative strip on the dashboard and door trim in satin chrome
- tachometer
- Rear parking aid, acoustic and visual
- ESP (Electronic Stability Program) with ASR (Traction Control)
- High beam assistant
- Follow-me-home function (automatic)
- Front apron in chrome look
- Transmission: 6-speed manual transmission
- Belts: 3-point safety belts
- Rear window wiper
- Map pockets on the front seat backrests
- Child safety locks in the rear doors
- Headrests (2) front
- Headrests (3) rear
- LED ambient lighting in white in the front footwell
- LED taillights with 3D effect
- LED daytime running lights and LED front indicators
- Steering wheel: small multifunction steering wheel flattened at the top and bottom
- Front center armrest, two-piece, with storage compartment, illuminated and air-conditioned
- Fog light
- Package: Children's Package
- Peugeot Connect Box
- Radio: Mirror Screen
- Rain sensor
- Wheels: 18" Detroit alloy wheels, two-tone with grey
- Rear view camera with 180° surrounding view
- Side windows in row 2 and rear window more tinted
- Seats: 2 additional seats for 3rd row
- Seats: Passenger seat height adjustable
- Seats: Driver's seat height adjustable
- Lane keeping assistant with steering intervention
- Stop&Start system
- 4 lashing eyes in the trunk
- Central locking can be activated with remote control from inside



## Extra equipment

- Removable trailer coupling (with removable ball head without tools)
- Luggage compartment partition net
- Inductive charging station WP29
- Package: Easy Package (rear view camera with 360° surrounding view - Park Assist: Active parking system with automatic steering for parallel and perpendicular parking spaces)
- Package: Full Leather Package (Allure) (Black Nappa leather with gray decorative stitching - Heated front seats - Folding passenger seat - Children's package)
- Automatic cruise control ACC and Active Safety Brake Plus (for night drivers and cyclists)
- sensor-controlled tailgate
- Paintwork: special metallic paint
- Package: Grip Control (Adaptive traction system with 4 modes (Standard, Sand, Mud, Snow) - Hill Descent Control - 18-inch "Los Angeles" alloy wheels, two-tone with 225/55 R18 M+S tires - Spare wheel well (not for Blue HDi 180 EAT8))
- Preparation for WEBASTO parking heater
- Warning triangle

## Brief expert findings

Documents submitted	At the time of the inspection, the registration certificate Part 2 (letter) was available, but the registration certificate Part 1 (certificate) was not. (Copy)
VIN comparison	The vehicle identification number (VIN) was read from the vehicle and its conformity with the submitted documents was verified during the inspection by the undersigned.
Inspection	The inspection conditions were sufficient for the assessment of the vehicle. Lifting equipment and a pit were available for examining the vehicle.
Test drive	No test drive/maneuvering was carried out during the inspection of the vehicle.
Engine function test	An engine test run was performed.
Driving readiness	The vehicle was drivable at the time of inspection.

## Value reducing factors

No.	Component group	Description
1	Wheel / tyres	Tyres - complete set - Differs from the original configuration - No deduction
2	Trim / covers	Floor mats (VL) - Holes - Replace
3	Side panel - rear right side	Sill - Scratch(es) - Smart repair
4	Door - rear left side	Door (Innen) - dent(s) - Smooth repair work

## Wear and tear

No.	Component group	Description
1	Body	Body (Waschstraßenkratzer) - Scratch(es) - No deduction
2	Bonnet	Bonnet - Stone chips - No deduction
3	Front bumper	Front bumper - Stone chips - No deduction

The vehicle shows signs of wear commensurate with its age and use.

## Missing parts

### Description

Documents - Radio / navigation user's manual  
Documents - Owner's manual  
Documents - Service book



## Order/Scope of order

The order was placed to prepare a sales report for the vehicle described. This includes the following:

- Description of core relevant information about the vehicle
- Documentation of equipment features  
*(Delivery by third-party service providers)*
- Documentation of damage, defects, missing parts
- Documentation of previous damage, unrepaired previous damage, repainting
- a brief visual or functional inspection of the equipment details if possible.  
*(Functional tests of driver assistance systems are not included in the scope of services!)*
- a photo documentation of the vehicle

## Basis for the order

This product is based on the Alphabet Fuhrpark GmbH guidelines for vehicle returns and valuations. The expert makes the explicit findings in each individual case objectively within the framework of the specified standards based on his or her own expertise.

The vehicle inspection takes place in a disassembled state.

Damage or defects that can only be detected during disassembly/diagnosis work or through advanced knowledge remain within the scope of the prognosis risk. An extended risk exists for concealed defects caused by fraudulent deception and not identifiable by the expert.

Damage or defects resulting from normal use or wear and tear of the vehicle will be accepted according to the applicable standard.

There was no explicit identification or monetary consideration of the expected features within the product.

Features which in their nature and severity slightly exceed normal use but do not constitute unacceptable damage will be documented and identified under signs of use if necessary.

Damage or defects which, according to the underlying standard, can no longer be attributed to normal use or wear and tear are listed in the product under "Depreciating Factors".

Depending on the product specification, a monetary ID can be provided. If this takes place, the costs can be 100% d or pro rata depending on the vehicle's age and mileage.

## Previous damages

Apparently, no repaired previous damage could be found on the vehicle.

## Comments

- Winterradsatz ist kein Bestandteil des Auslieferungsumfangs.





Figure 1: Diagonal front (left)



Figure 2: Diagonal front (right)



Figure 3: Diagonal rear (left)



Figure 4: Diagonal rear (right)

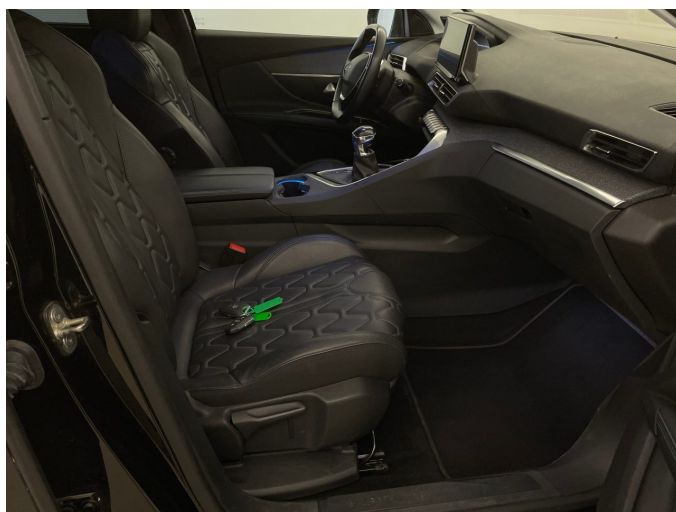


Figure 5: Interior - front



Figure 6: Interior - rear





Figure 7: Instrument cluster



Figure 8: Instrument panel



Figure 9: interior 360° view



Figure 10: Cargo area

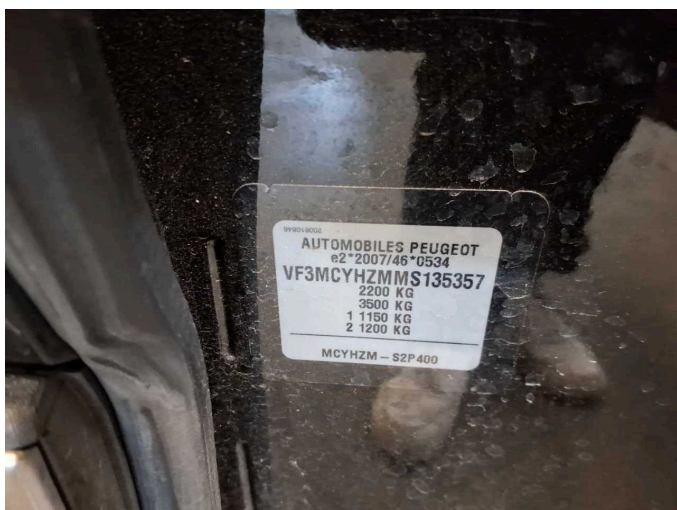


Figure 11: VIN



Figure 12: Mounted tyres

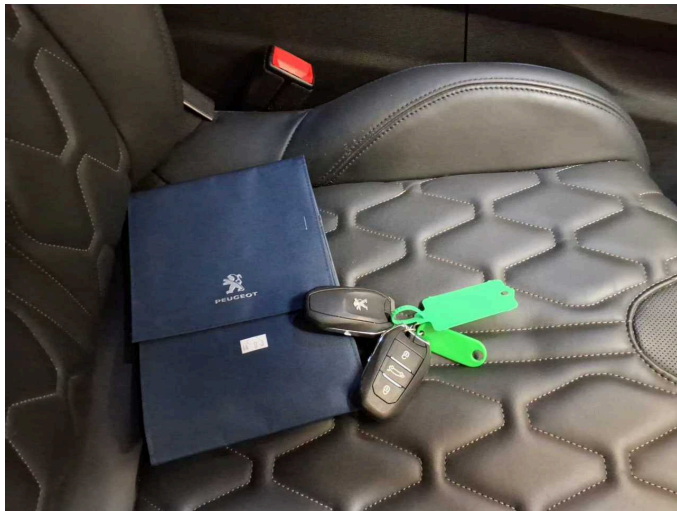


Figure 13: Documents

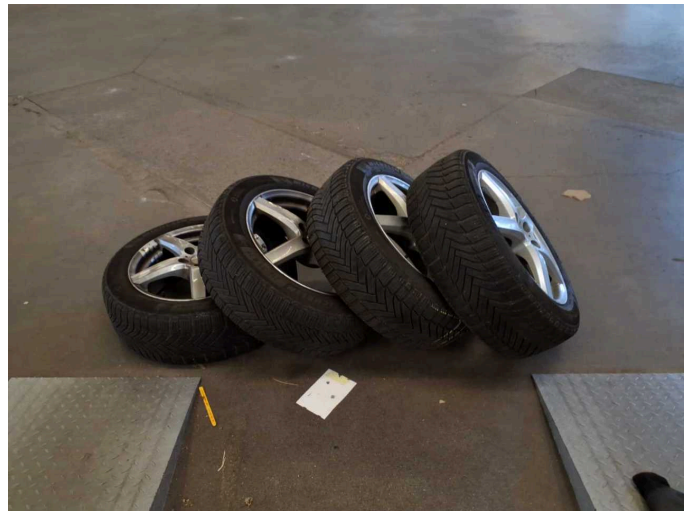


Figure 14: Additional tyres

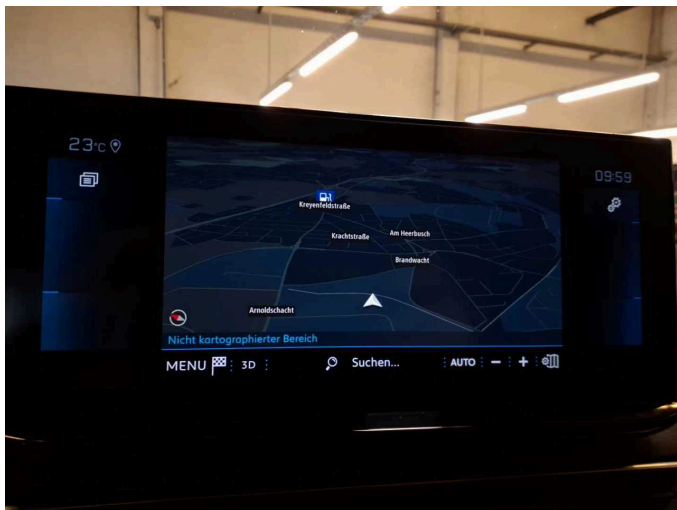


Figure 15: Navigation



Figure 16: Misc.



Figure 17: Misc.

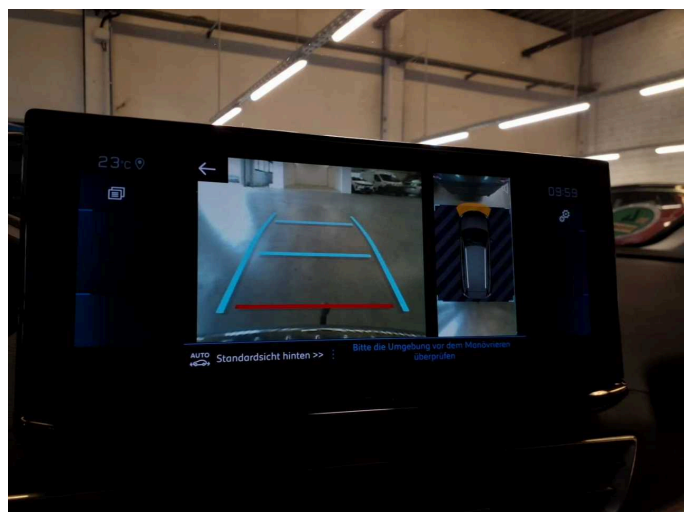


Figure 18: Misc.





Figure 19: Misc.



Figure 20: Misc.



Figure 21: Misc.



Figure 22: Misc.



Figure 23: Misc.



Figure 24: Misc.





Figure 25: Misc.



Figure 26: Misc.

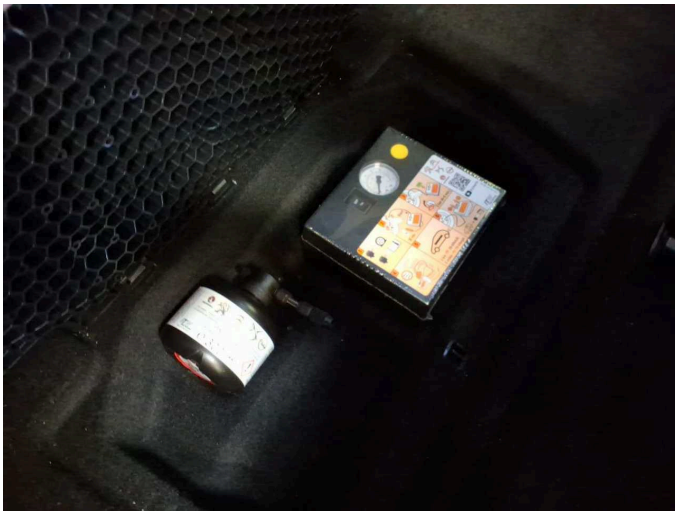


Figure 27: Misc.



Figure 28: Misc.



Figure 29: Misc.

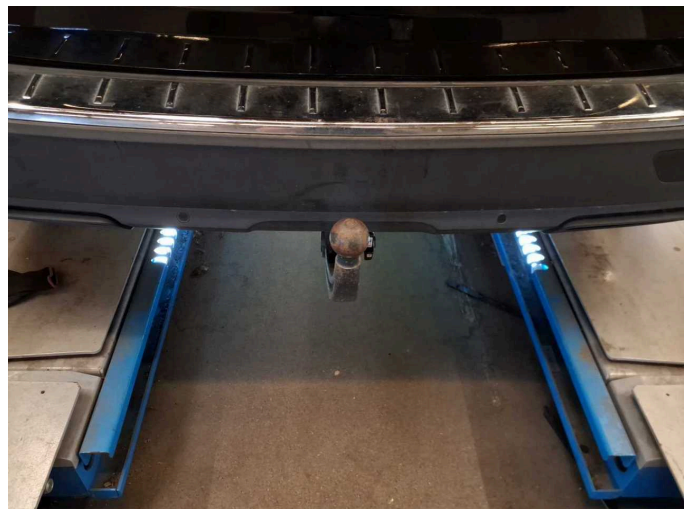


Figure 30: Misc.

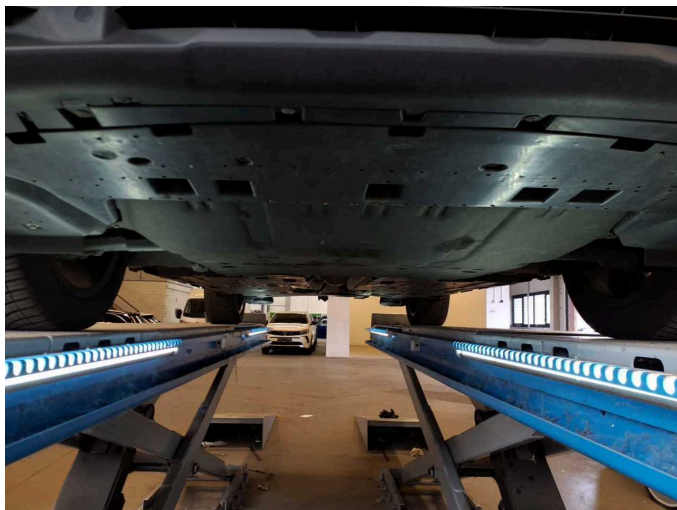




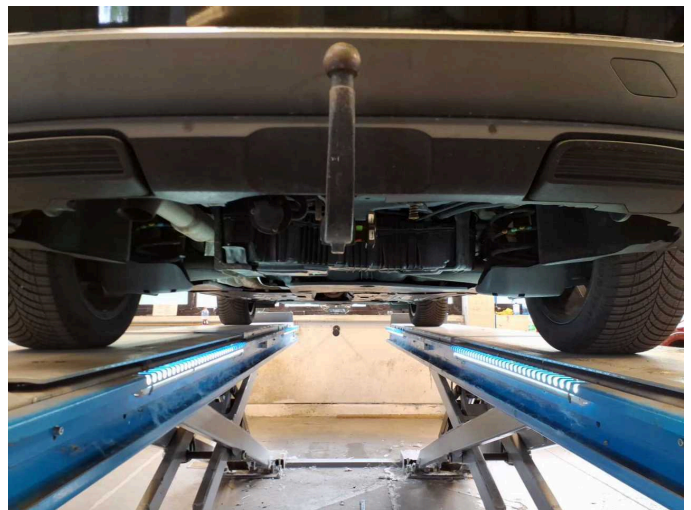
**Figure 31:** Misc.



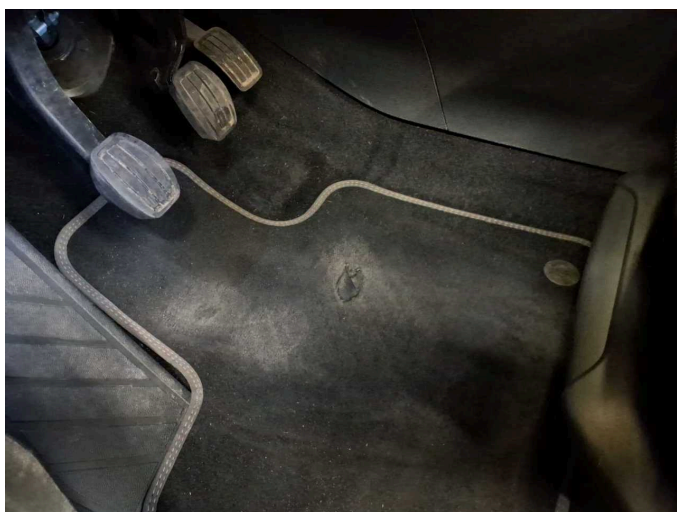
**Figure 32:** Misc.



**Figure 33:** Misc.



**Figure 34:** Misc.

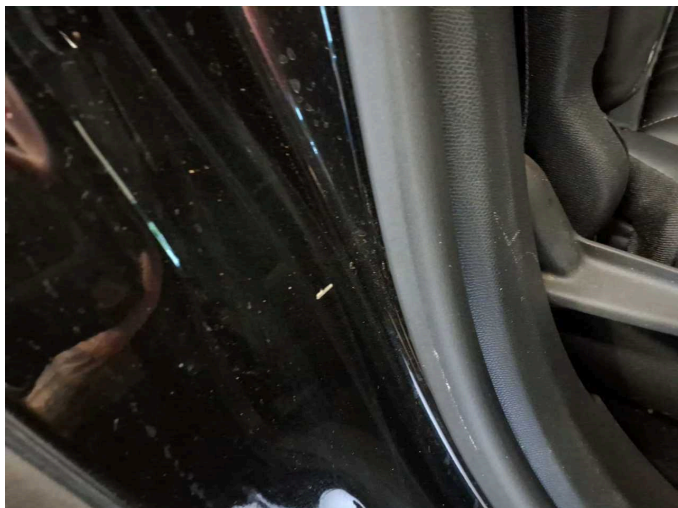


**Damage 2:** Trim / covers: Floor mats (VL) - Holes - Replace

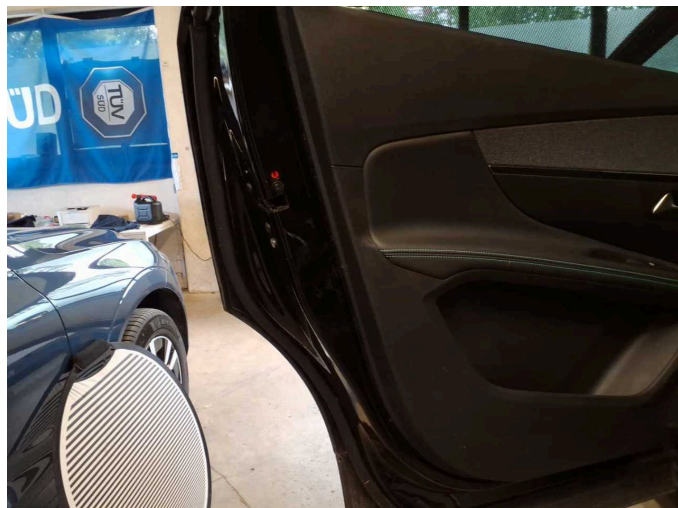


**Damage 3:** Side panel - rear right side: Sill - Scratch(es) - Smart repair

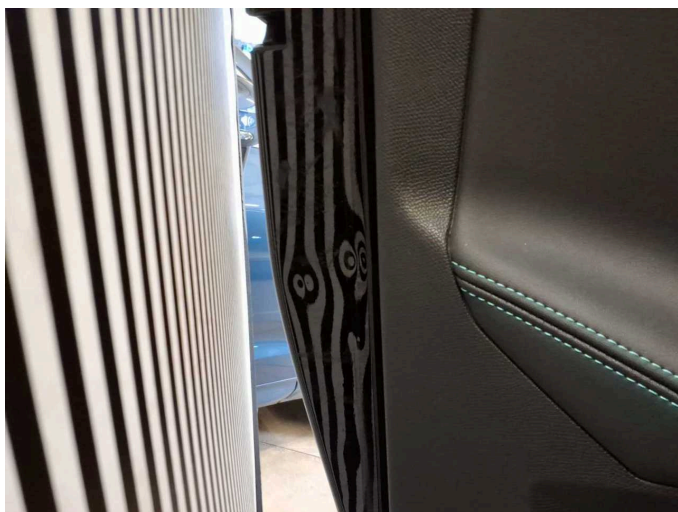




**Damage 3:** Side panel - rear right side: Sill - Scratch(es) - Smart repair



**Damage 4:** Door - rear left side: Door (Innen) - dent(s) - Smooth repair work



**Damage 4:** Door - rear left side: Door (Innen) - dent(s) - Smooth repair work