



PEUGEOT 3008

3008 THP 165 EAT6 Stop & Start

VIN NO VF3M45GZWHS278570
Registration Number ZWHS278570



MOT Date

2026-11-01

Last Service

2022-08-08

Number of Owners

1

Last Service Mileage

76041

Number of Keys

2

First Registration Date

2017-11-17

Odometer Reading

119127 km

Country First Registered

Germany

Inspection Report Summary

Customer	BCA Online	Report Number	P20250331081644
Inspection Date / Place	2025-03-31 / HARTMANN Compound-Professionals GmbH Dorfmark	Cosmetic Grade	4

Vehicle Summary

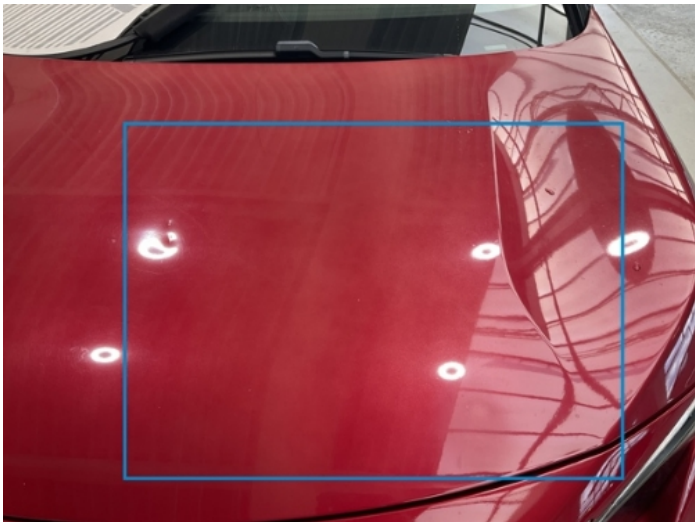
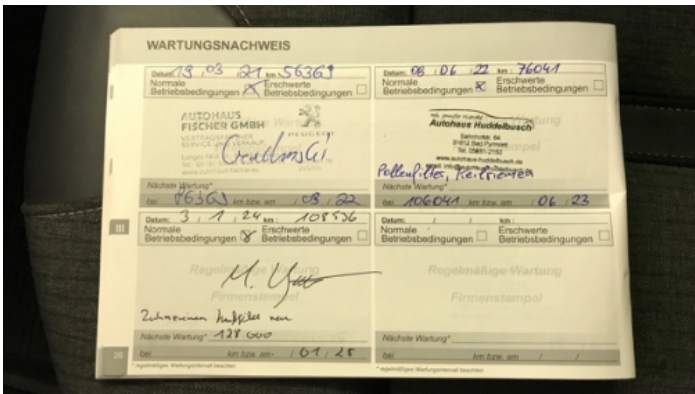
Vehicle Condition	Runner	VAT Type	Margin
Fuel Type	Petrol	Road Worthy	Yes
Colour	Red	Engine Size (cc)	1598
Engine Size	1.6	No of Doors	5
Body Type	SUV	Drive Train	Front
Seat Colour		No of Seats	5
Seat Covering Name		Seat Covering	Cloth/Synthetic Leather
Charging Cables		NEDC CO2 Rating (q/km)	136
Gearbox Type	Automatic		

Vehicle History & Documents

Service Book Available	Incomplete	Next Service Mileage	km
Previous Usage		Imported	No
Manufacturer Warrenty			







Equipment

Tinted Glass	USB Socket	Anti-lock braking	Digitaldashboard
Remote adjusting wing mirrors	Reversing Camera	Satellite navigation	Central locking
Electrictailgate	Radio	Trip Computer	Airbag Status
Bluetooth telephone interface	Front parking sensors	Remote central locking	Roof rails
Stability control	Electrically folding wing mirrors	Leather steering wheel	Rear parking sensors

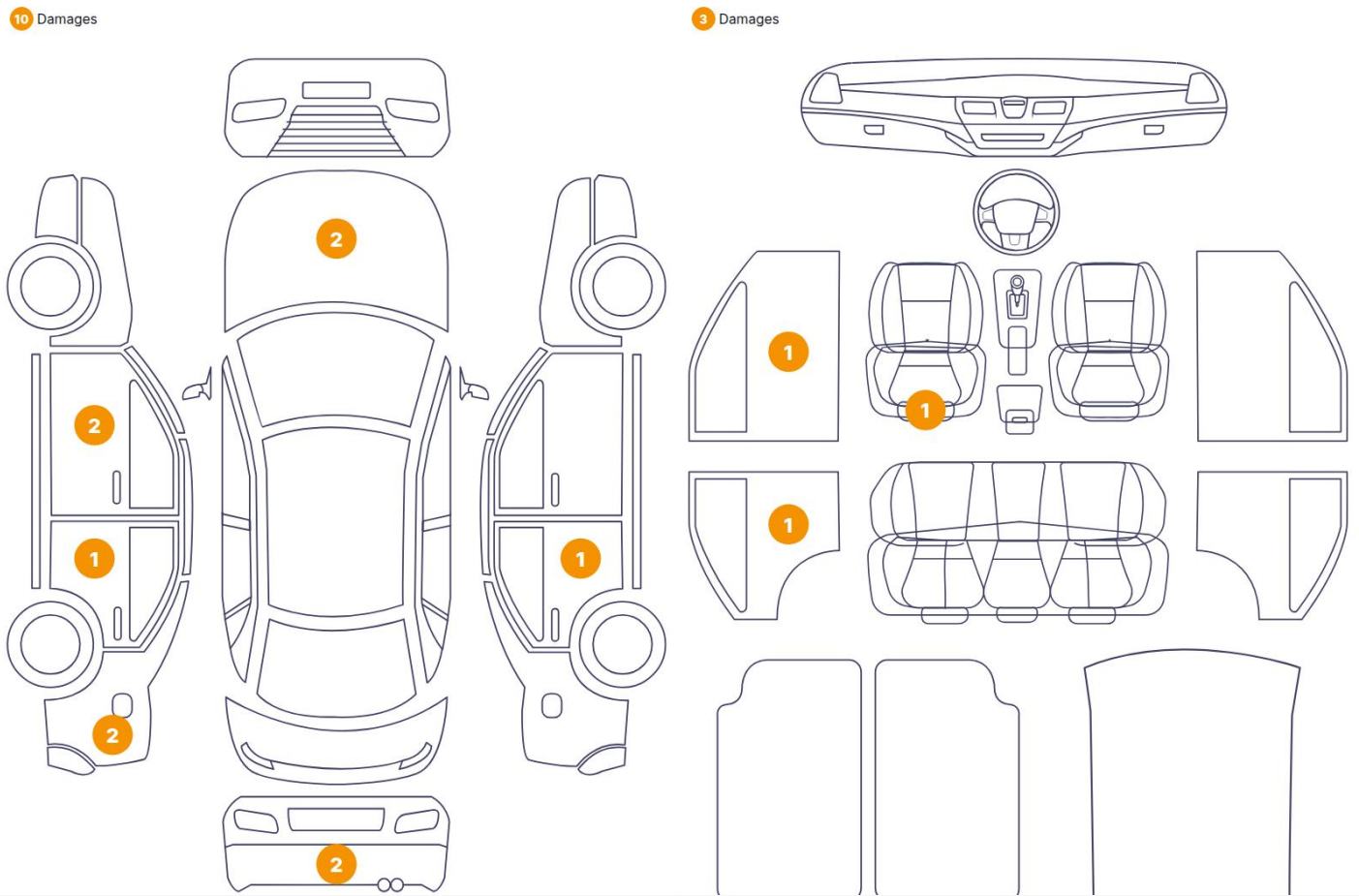
Equipment Details

Air Conditioning	Dual Zone Climate Control	Seat Heating	Front
------------------	---------------------------	--------------	-------

Wheels & Tyres

Extra Wheel - 1 Tyre Depth	3	Extra Wheel - 2 Tyre Depth	3
Extra Wheel - 3 Tyre Depth	2	Extra Wheel - 4 Tyre Depth	2
Left Front Tyre Depth	6	Right Front Tyre Depth	6
Right Rear Tyre Depth	5	Left Rear Tyre Depth	5

Cosmetic Damage



Component		Damage	Comments
1	Seat Cushion / Front Left	Interior / Worn - out	
2	Panel Filling / Front Left	Interior / Worn - out	
3	Panel Filling / Back Left	Interior / Scraped	
4	Door / Back Right	Paint / Scratch / Line	
5	Bumper / Back	Paint / Scratch / Scuff	
6	Corner Bumper / Back Left	Paint / Scratch / Line	
7	Side Panel / Back Left	Paint / Scratch / Scuff	
8	Side Panel / Back Left	Paint / Scratch / Scuff	
9	Door / Back Left	Paint / Scratch / Scuff	
10	Door / Front Left	Paint / Scratch / Scuff	
11	Door Handle / Front Left	Paint / Poor Previous Repair	
12	Hood	Bodywork / Dent / Dent	
13	Hood	Paint / Poor Previous Repair	



1. Seat Cushion / Front Left
Interior / Worn - out -



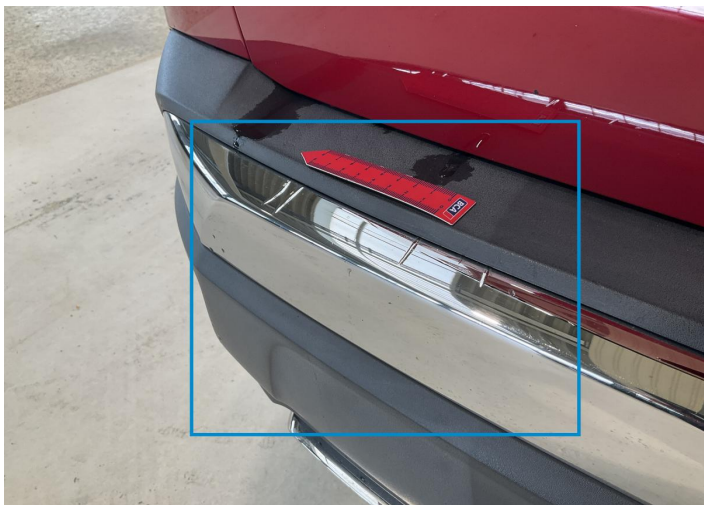
2. Panel Filling / Front Left
Interior / Worn - out -



3. Panel Filling / Back Left
Interior / Scraped -



4. Door / Back Right
Paint / Scratch / Line -



5. Bumper / Back
Paint / Scratch / Scuff -



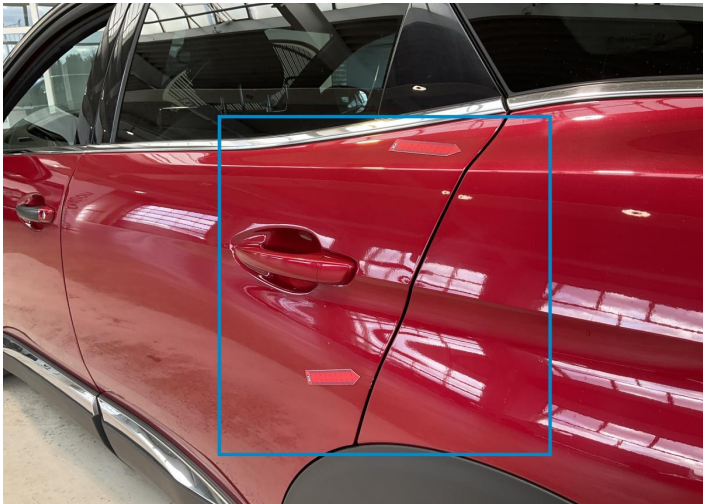
6. Corner Bumper / Back Left
Paint / Scratch / Line -



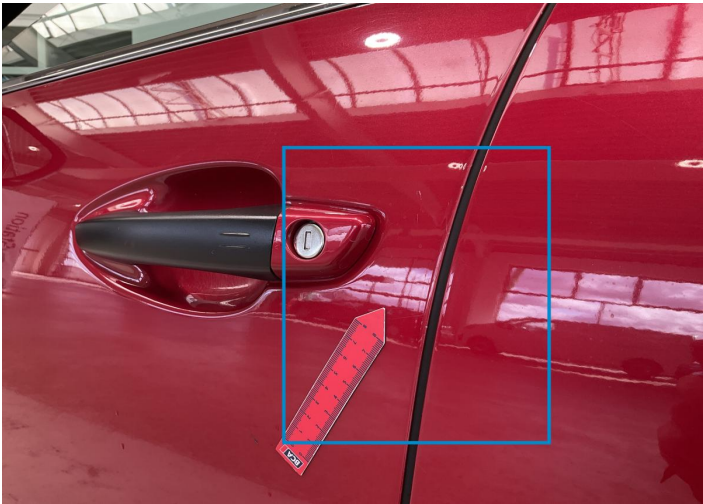
7. Side Panel / Back Left
Paint / Scratch / Scuff -



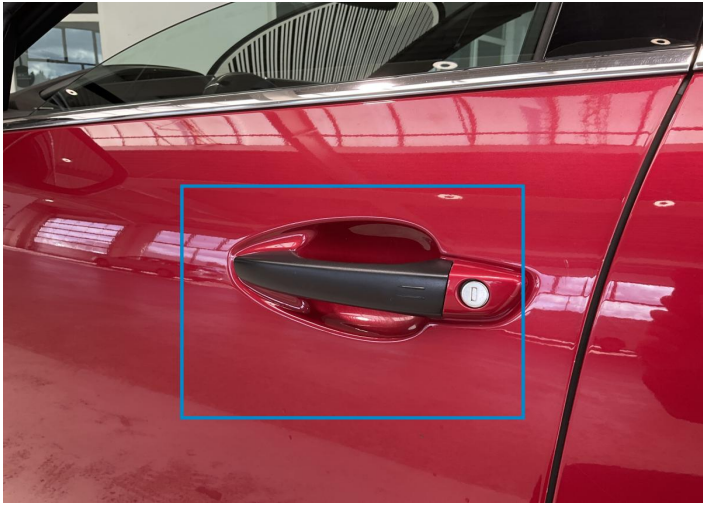
8. Side Panel / Back Left
Paint / Scratch / Scuff -



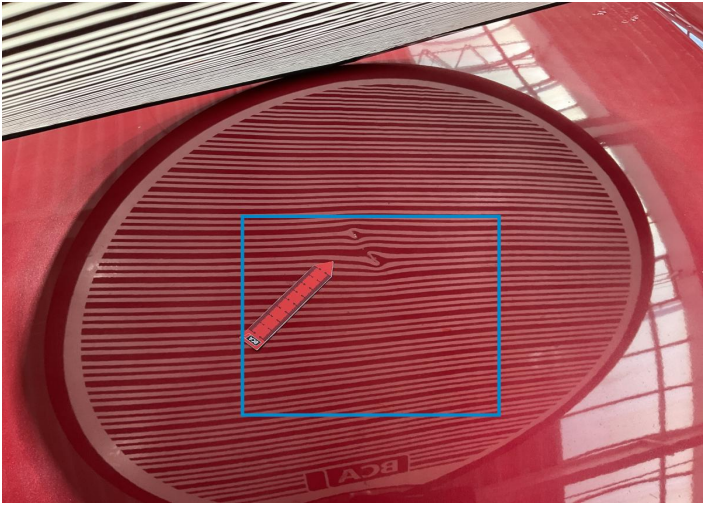
9. Door / Back Left
Paint / Scratch / Scuff -



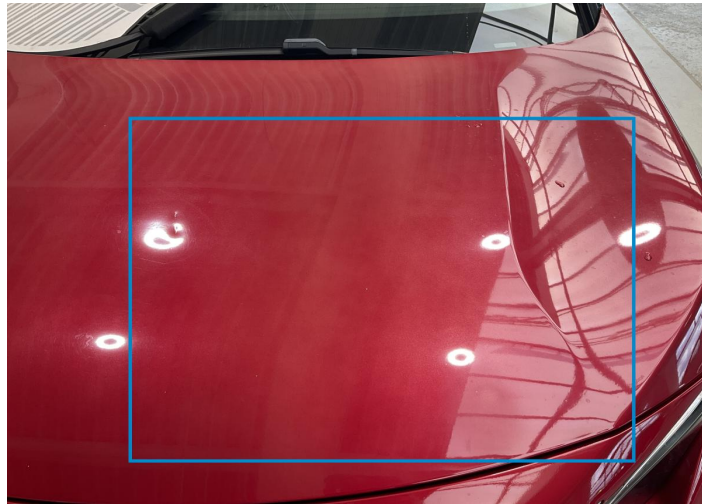
10. Door / Front Left
Paint / Scratch / Scuff -



11. Door Handle / Front Left
Paint / Poor Previous Repair -



12. Hood
Bodywork / Dent / Dent -



13. Hood
Paint / Poor Previous Repair -

Mechanical Condition

Control Lights

ABS Warning Light	✓	ESP Fault/Traction Control Malfunction Light	✓
Airbag Warning Light	✓	Oil Pressure Warning Light	✓
Brake Warning Light	✓	Power Steering Warning Light	✓
Alternator / Battery	✓	No Dashboard Lights	✓
Display Defect	✓	Service Light	✓
Tire Pressure Monitoring System	✓		

Engine

Engine Status / EML	✓	Engine Starts	✓
Engine Leak Visible	✓		

Gearbox

Gear Box	✓
----------	---

Equipments Test

Central Locking	✓	Main & Spare Keys Functioning	✓
Electric Windows	✓	Navigation System	✓
Audio Equipment	✓	AC / Heating System	✓
Other Equipments	✓		

Levels

Brakes Fluid	✓	Coolant Fluid	✓
--------------	---	---------------	---

Hybrid/EV

Hybrid System Fault	✓
---------------------	---

Test Drive Inspection

Engine			
Fume Quantity	NA	Engine Noise	✓
The Gears Scratch / Skip / Abnormal Operation	✓	Power Loss	✓
Brake			
Brake System Anomaly	✓		
Steering Wheel			
Steering Noise / Anomaly	✓		
General			
Test Driven Status	✓		
✓ <i>No troubles detected, good condition or correct tests, according to vehicle age and mileage</i>			
! <i>Damages or malfunction detected that requires repairs by the buyer</i>			
NA <i>Not applicable</i>			
☐ <i>Not tested</i>			

Disclaimer

Please also note the "UserGuide condition report", which shows the scope of the vehicle description.

[User Guide](#)