



PEUGEOT 308

308 1.6 HDi 90ch BLUE LION Confort

VIN NO VF34C9HXC55137764
Registration Number 1233YF02



MOT Date	Number of Owners	Number of Keys	Odometer Reading
-	-	1	214854 km
Last Service	Last Service Mileage	First Registration Date	Country First Registered
-	-	2008-02-15	-

Inspection Report Summary

Customer	BCAauto Encheres	Report Number	P20251008164329
Inspection Date / Place	2025-10-08 / BCA BETHUNE	Cosmetic Grade	3

Vehicle Summary

Vehicle Condition	Non-Runner	VAT Type	Exempt Rate
Fuel Type	Diesel	Gearbox Type	Manual
Colour	Blue	Engine Size (cc)	1560
Engine Size	1.6	No of Doors	5
Body Type	Hatchback	Drive Train	Front
Seat Colour		No of Seats	5
Charging Cables		NEDC CO2 Rating (q/km)	120
Engine Rating CV	5	Metalic Colour	Yes
Accident Damage	No	Euro Emission	

Vehicle History & Documents

Service Book Available	Present	Next Service Mileage	km
Previous Usage	Normal Use	Imported	No
Manufacturer Warrenty			



Equipment

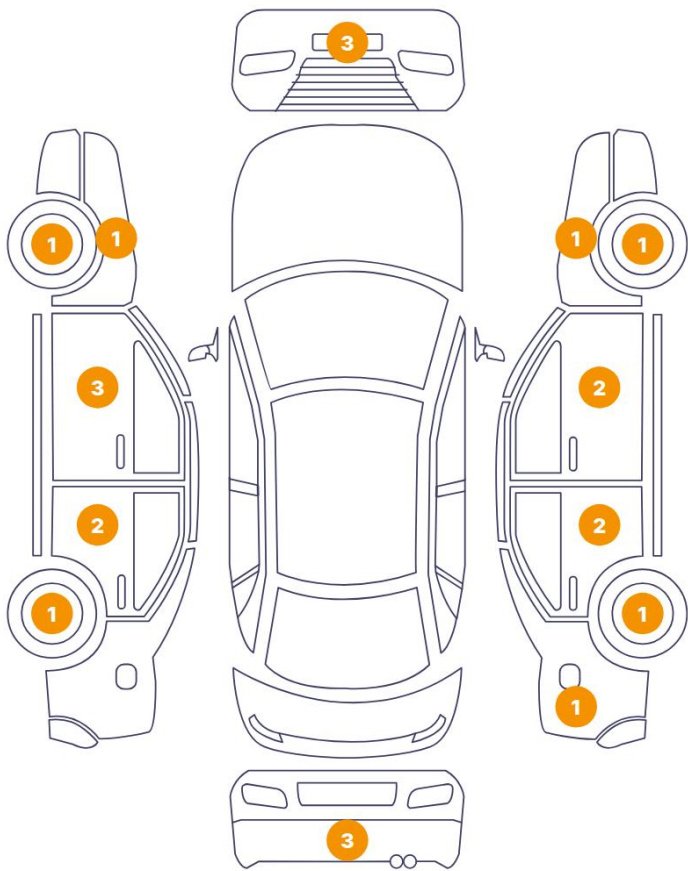
Central locking	Alloys wheels	Front fog lamps	Radio
Cruise control	Power assisted steering		

Equipment Details

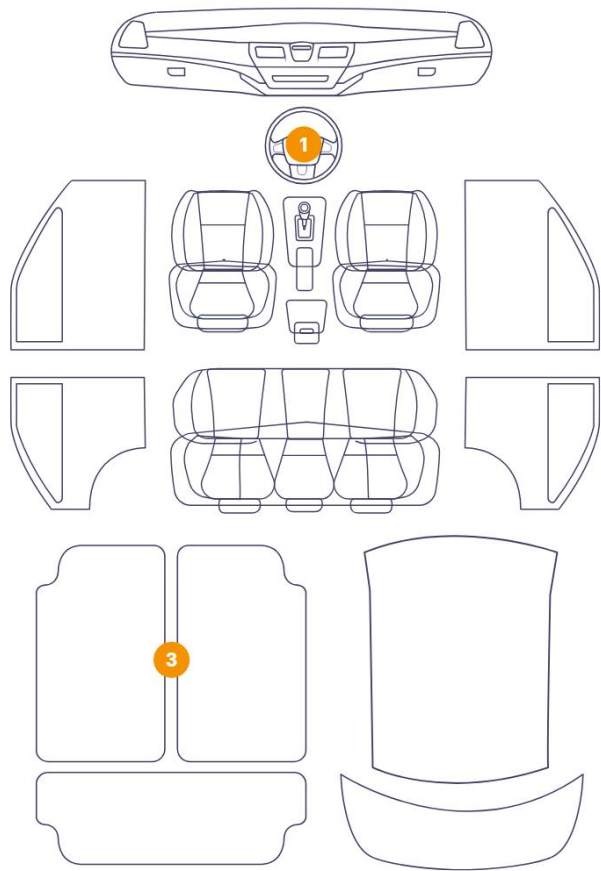
Seat Heating	No	Air Conditioning	Yes
Sunroof Type	Tilt/Slide Steel		

Cosmetic Damage

22 Dommages



4 Dommages



Component		Damage	Comments
1	Floor Carpet	Interior / Dirty	
2	Side Panel / Back Right	Paint / Scratch / Scuff	
3	Floor Carpet	Interior / Dirty	
4	Corner Bumper / Front Left	Paint / Scratch / Scuff	
5	Corner Bumper / Back Right	Paint / Scratch / Scuff	
6	Bumper / Back	Paint / Scratch / Scuff	
7	Steering Wheel / Front	Interior / Worn - out	
8	Corner Bumper / Back Left	Paint / Scratch / Scuff	
9	Bumper / Front	Paint / Scratch / Scuff	
10	Rim / Front Left	Out of Bodywork / Scratch	
11	Door / Front Left	Paint / Scratch / Line	
12	Corner Bumper / Front Right	Paint / Scratch / Scuff	

13	Rim / Front Right	Out of Bodywork / Scratch
14	Door / Back Left	Paint / Scratch / Line
15	Rim / Back Right	Out of Bodywork / Scratch
16	Rim / Back Left	Out of Bodywork / Scratch
17	Mirror / Front Right	Paint / Scratch / Scuff
18	Mirror / Front Left	Bodywork / Breakage
19	Door / Back Right	Paint / Scratch / Line
20	Door / Front Right	Paint / Scratch / Line
21	Fender / Front Left	Paint / Scratch / Line
22	Door / Front Left	Paint / Scratch / Line
23	Fender / Front Right	Paint / Scratch / Scuff
24	Door / Back Left	Paint / Scratch / Line
25	Floor Carpet	Interior / Holed
26	Door / Back Right	Bodywork / Dent / Dent



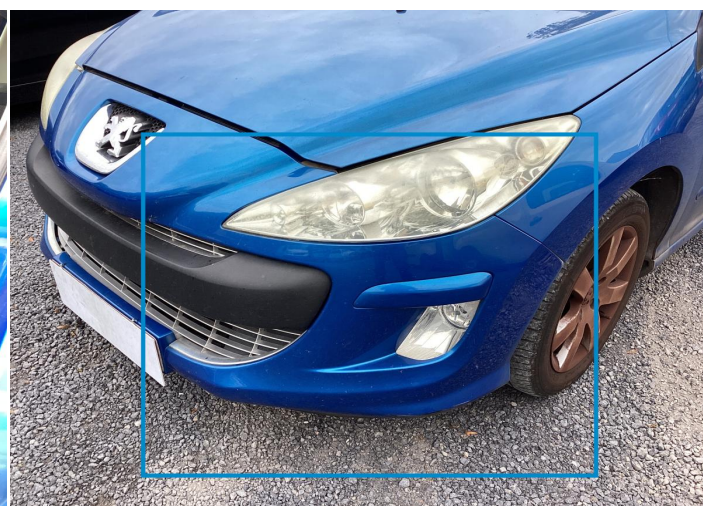
1. Floor Carpet
Interior / Dirty -



2. Side Panel / Back Right
Paint / Scratch / Scuff -



3. Floor Carpet
Interior / Dirty -



4. Corner Bumper / Front Left
Paint / Scratch / Scuff -



5. Corner Bumper / Back Right
Paint / Scratch / Scuff -



6. Bumper / Back
Paint / Scratch / Scuff -



7. Steering Wheel / Front Interior / Worn - out -



8. Corner Bumper / Back Left Paint / Scratch / Scuff -



9. Bumper / Front Paint / Scratch / Scuff -



10. Rim / Front Left Out of Bodywork / Scratch -



11. Door / Front Left Paint / Scratch / Line -



12. Corner Bumper / Front Right Paint / Scratch / Scuff -



13. Rim / Front Right
Out of Bodywork / Scratch -



14. Door / Back Left
Paint / Scratch / Line -



15. Rim / Back Right
Out of Bodywork / Scratch -



16. Rim / Back Left
Out of Bodywork / Scratch -



17. Mirror / Front Right
Paint / Scratch / Scuff -



18. Mirror / Front Left
Bodywork / Breakage -



19. Door / Back Right
Paint / Scratch / Line -



20. Door / Front Right
Paint / Scratch / Line -



21. Fender / Front Left
Paint / Scratch / Line -



22. Door / Front Left
Paint / Scratch / Line -



23. Fender / Front Right
Paint / Scratch / Scuff -



24. Door / Back Left
Paint / Scratch / Line -



25. Floor Carpet
Interior / Holed -



26. Door / Back Right
Bodywork / Dent / Dent -

Mechanical Condition

Tyres

Presence Anti-Theft Lock Nut 

 *No troubles detected, good condition or correct tests, according to vehicle age and mileage*

 *Damages or malfunction detected that requires repairs by the buyer*

 *Not applicable*

 *Not tested*

Disclaimer Section

The test drive is done on a flat surface and lasts about 2 minutes. The driven distance is a minimum of 300 meters, including a u-turn, an acceleration and a braking phase. The highest speed achieved during this test is 50km/h. The mechanical check is a visual and dynamic diagnosis without any disassembly. We cannot guarantee any mechanical wear part.