



PEUGEOT 3008 3008 155 THP

VIN NO VF30U5FV89S169181

Registration Number V89S169181



MOT Date

2026-03-01

Last Service



Number of Owners

5

Last Service Mileage



Number of Keys

2

First Registration Date

2009-09-29

Odometer Reading

143054 km

Country First Registered

Germany

Inspection Report Summary

Customer	BCA Online	Report Number	P20250925114235
Inspection Date / Place	2025-09-25 / ARS Altmann AG Riedstadt	Cosmetic Grade	4

Vehicle Summary

Vehicle Condition	Runner	VAT Type	Margin
Fuel Type	Petrol	Road Worthy	Yes
Colour	Black	Engine Size (cc)	1598
Engine Size	1.6	No of Doors	5
Body Type	Stationwagon / Estate	Drive Train	Front
Seat Colour		No of Seats	5
Seat Covering Name		Seat Covering	Cloth
Charging Cables		NEDC CO2 Rating (q/km)	167
Gearbox Type	Manual		

Vehicle History & Documents

Service Book Available	Missing	Next Service Mileage	km
Previous Usage		Imported	No
Manufacturer Warranty			







Equipment

Tinted Glass	Alloys wheels	Cruise control	Remote central locking
Sunroof	Central locking	Leather steering wheel	Rear parking sensors
Trip Computer	Anti-lock braking	Remote adjusting wing mirrors	Stability control
CD Player	Electrically folding wing mirrors	Radio	

Equipment Details

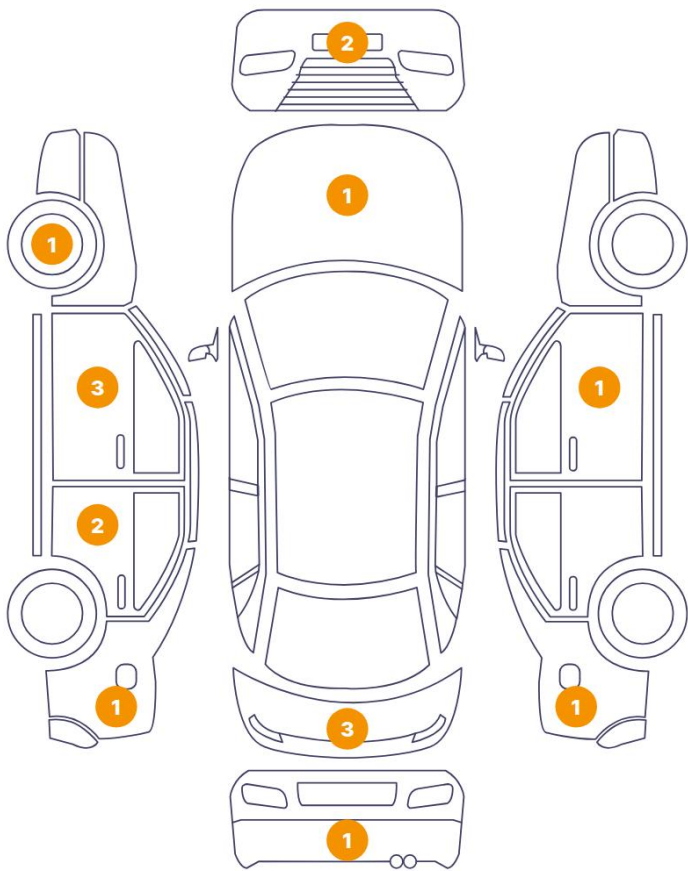
Air Conditioning	Dual Zone Climate Control	Alloy Wheel Size	18
Seat Heating	No	Sunroof Type	Fixed Panoramic

Wheels & Tyres

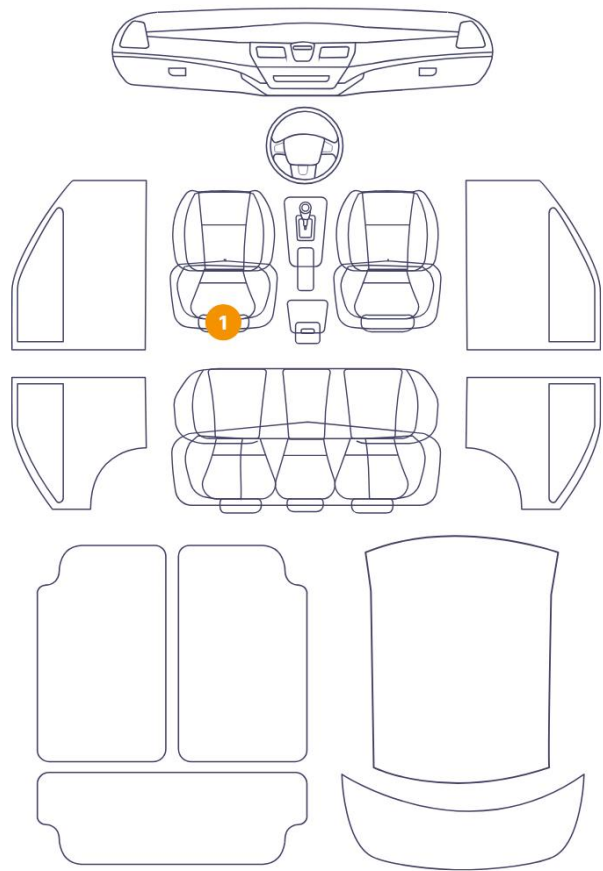
Right Front Tyre Depth	6	Left Front Tyre Depth	6
Right Rear Tyre Depth	6	Left Rear Tyre Depth	6

Cosmetic Damage

16 Schäden



1 Schäden



Component		Damage	Comments
1	Hood	Paint / Stone Chip	
2	Bumper / Front	Bodywork / Dent / Dent	
3	Spoiler / Front	Paint / Scratch / Scuff	
4	Rim / Front Left	Out of Bodywork / Scratch	
5	Mirror / Front Left	Paint / Scratch / Scuff	
6	Seat / Front Left	Interior / Scratched	
7	Pillar / Front Left	Paint / Scratch / Scuff	
8	Door / Back Left	Paint / Scratch / Scuff	
9	Bumper / Back	Paint / Scratch / Scuff	
10	Rear Window / Back	Glass Break / Scratch / Scratch	
11	Door / Front Right	Bodywork / Dent / Dent	
12	Fender / Back Right	Bodywork / Dent / Dent	

13	Tailgate	Bodywork / Dent / Dent
14	Tailgate	Paint / Poor Previous Repair
15	Fender / Back Left	Paint / Poor Previous Repair
16	Door / Back Left	Paint / Poor Previous Repair
17	Door / Front Left	Paint / Poor Previous Repair



1. Hood
Paint / Stone Chip -



2. Bumper / Front
Bodywork / Dent / Dent -



3. Spoiler / Front
Paint / Scratch / Scuff -



4. Rim / Front Left
Out of Bodywork / Scratch -



5. Mirror / Front Left
Paint / Scratch / Scuff -



6. Seat / Front Left
Interior / Scratched -



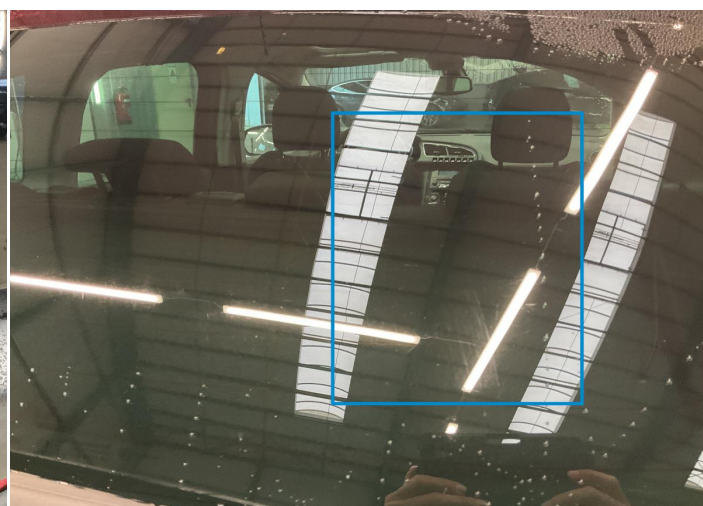
7. Pillar / Front Left
Paint / Scratch / Scuff -



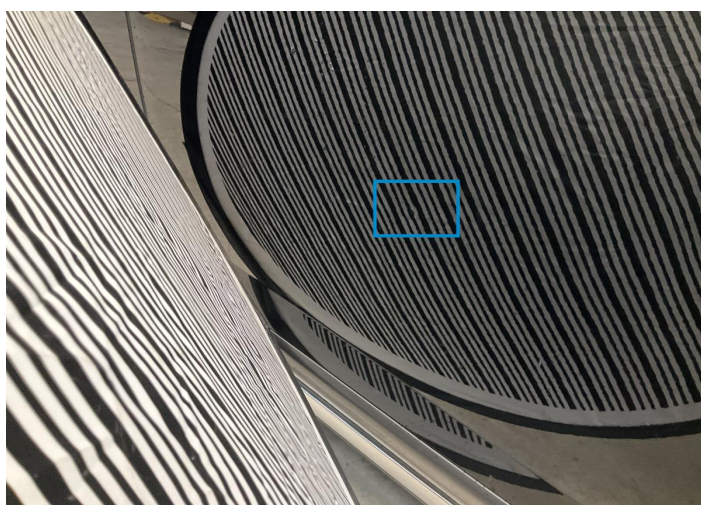
8. Door / Back Left
Paint / Scratch / Scuff -



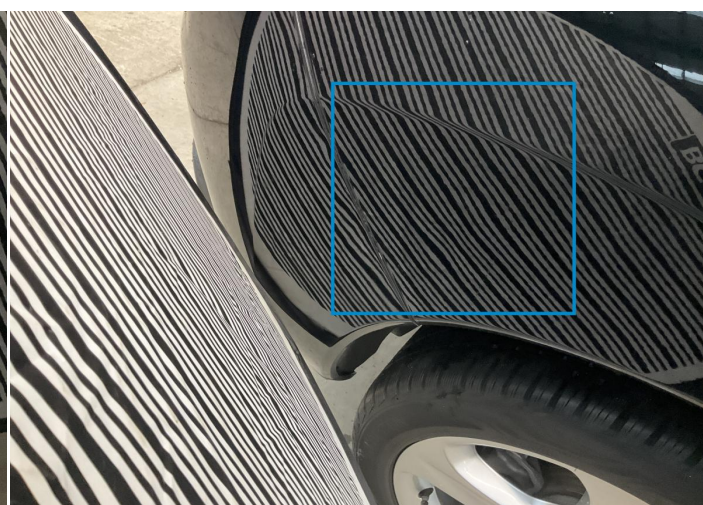
9. Bumper / Back
Paint / Scratch / Scuff -



10. Rear Window / Back
Glass Break / Scratch / Scratch -



11. Door / Front Right
Bodywork / Dent / Dent -



12. Fender / Back Right
Bodywork / Dent / Dent -



13. Tailgate
Bodywork / Dent / Dent -



14. Tailgate
Paint / Poor Previous Repair -



15. Fender / Back Left
Paint / Poor Previous Repair -



16. Door / Back Left
Paint / Poor Previous Repair -



17. Door / Front Left
Paint / Poor Previous Repair -

Mechanical Condition

Engine

Engine Starts	✓	Engine Status / EML	✓
Engine Leak Visible	✓		

Control Lights

ABS Warning Light	✓	ESP Fault/Traction Control Malfunction Light	✓
Airbag Warning Light	✓	Oil Pressure Warning Light	✓
Brake Warning Light	✓	Power Steering Warning Light	✓
Alternator / Battery	✓	No Dashboard Lights	✓
Display Defect	✓	Service Light	✓
Tire Pressure Monitoring System	✓		

Gearbox

Gear Box	✓
----------	---

Equipments Test

Audio Equipment	✓	AC / Heating System	✓
Other Equipments	✓	Central Locking	✓
Main & Spare Keys Functioning	✓	Electric Windows	✓
Parking Sensors / Cameras Functioning	✓		

Levels

Brakes Fluid	✓	Coolant Fluid	✓
--------------	---	---------------	---

Test Drive Inspection

Steering Wheel			
Steering Noise / Anomaly		✔	
Engine			
Engine Noise	✔	The Gears Scratch / Skip / Abnormal Operation	✔
Fume Quantity	!	Power Loss	✔
Brake			
Brake System Anomaly		✔	
Clutch			
Clutch Functioning		✔	
General			
Test Driven Status		✔	
✔ No troubles detected, good condition or correct tests, according to vehicle age and mileage			
! Damages or malfunction detected that requires repairs by the buyer			
NA Not applicable			
= Not tested			

Disclaimer

Please also note the "UserGuide condition report", which shows the scope of the vehicle description.

[User Guide](#)