



Expertise

Protocol number: 41783151  
Order number / reference: 25109880  
Inspection date: 1 Oct 2025

Manufacturer: Renault

Model: Kangoo Rapid Blue dCi 95 Extra

VIN: VF1WF000765656988



Vehicle details	
Manufacturer / Type / Model / Equipment	
Renault Kangoo Rapid Blue dCi 95 Extra	
Vehicle Identification number	VF1WF000765656988
Mileage (Read)	93,567 km
First registration	31 Jul 2020
Number of holders	1
Next periodical technical inspection	08/2026
(Report not on hand)	
Power / Engine displacement	70 kw / 1,461 ccm
Fuel type / Cylinder	Diesel / 4
Gearbox / Number of gears	Manual / 6
Type of drive	Front drive
Type of vehicle	Van
Colour / colour code	Mineral-Weiß
Doors / Seats	4 / 2
Upholstery type	Cloth
Colour of upholstery	Black-Grey



## Vehicle details

<b>Maintenance booklet / proof</b>	digital proof / complete	<b>Next maintenance in</b>	27,774 km
<b>Last maintenance on / at</b>	05/2025 at 86,462 km		
<b>Key is / should be</b>	2 / 2	<b>FZG documents</b>	ZB#2 (B) was available (copy), ZB#1 (S) was not available
		<b>Letter No.</b>	FU175273
<b>Previous damage / Accident</b>	None detectable	<b>Repainting</b>	None detectable
<b>Inspection conditions</b>	sufficient	<b>Lifting equipment / pit</b>	yes
<b>Test drive</b>	Not performed	<b>Engine function test</b>	Performed
<b>Manufacturer key number/ type code number</b>	3333 / BLL 00057		
<b>Emission standard</b>	EURO6;WLTP;CH;PI/CI; N1 II	<b>Fine dust sticker</b>	
<b>Permitted total weight</b>	1,980 kg	<b>Empty weight</b>	

## Tyres

### Mounted tyres

#	Tyre size	Type of tyre	Manufacturer	Tread depth
1)	195/65 R15 91H	Summer tyres on Steel rim with wheel cover	Goodyear	5mm / 5mm
2)	195/65 R15 95T	Summer tyres on Steel rim with wheel cover	Michelin	6mm / 6mm

### Additional tyres

#	Tyre size	Type of tyre	Manufacturer	Tread depth
1)	195/65 R15 91T	Winter tyres on Steel	Goodyear	5mm / 5mm
2)	195/65 R15 91T	Winter tyres on Steel	Goodyear	5mm / 5mm

### Replacement

Typ	Tyre size	Type of tyre	Manufacturer	Tread depth
E	195/65 R15 95T	Summer tyres on Steel	Michelin	7 mm

**Legend:** Tread depth information for tires on the left is in the first place, for tires on the right is in the second place on the axle in the direction of travel



## Equipment

### Standard equipment

- |                                                                                                                                                                                                                                                                                                                                                                                                                                                                                                                                                                                                                                                                                                                                     |                                                                                                                                                                                                                                                                                                                                                                                                                                                                                                                                                                                                                                                           |
|-------------------------------------------------------------------------------------------------------------------------------------------------------------------------------------------------------------------------------------------------------------------------------------------------------------------------------------------------------------------------------------------------------------------------------------------------------------------------------------------------------------------------------------------------------------------------------------------------------------------------------------------------------------------------------------------------------------------------------------|-----------------------------------------------------------------------------------------------------------------------------------------------------------------------------------------------------------------------------------------------------------------------------------------------------------------------------------------------------------------------------------------------------------------------------------------------------------------------------------------------------------------------------------------------------------------------------------------------------------------------------------------------------------|
| <ul style="list-style-type: none"> <li>• Storage compartment in front doors and dashboard</li> <li>• Driver's side airbag</li> <li>• Outside temperature display</li> <li>• Digital clock in the instrument panel</li> <li>• ESP with Extended Grip and Hill Start Assist</li> <li>• Transmission: 6-speed manual transmission</li> <li>• Front headrests (2), height adjustable</li> <li>• Paint finish: Uni</li> <li>• Mobility set</li> <li>• Upholstery: Cloth</li> <li>• Wheels: Tire size 195/65 R 15</li> <li>• Sliding door right, closed</li> <li>• Side protection strips</li> <li>• Power steering</li> <li>• Lashing eyes in the load compartment floor</li> <li>• Central locking with radio remote control</li> </ul> | <ul style="list-style-type: none"> <li>• ABS with EBV</li> <li>• Exterior mirrors, electrically adjustable and heated</li> <li>• Brake assist</li> <li>• tachometer</li> <li>• Electric front windows</li> <li>• Rear doors, asymmetrical, with window</li> <li>• Plastic floor in the cargo area</li> <li>• Steering wheel height adjustable</li> <li>• Package: Storage package</li> <li>• Soot particle filter</li> <li>• Switching point display</li> <li>• Protective bar behind the driver's seat</li> <li>• Side protection reinforcement</li> <li>• Engine protection</li> <li>• Electronic immobilizer</li> <li>• Switchable ECO mode</li> </ul> |
|-------------------------------------------------------------------------------------------------------------------------------------------------------------------------------------------------------------------------------------------------------------------------------------------------------------------------------------------------------------------------------------------------------------------------------------------------------------------------------------------------------------------------------------------------------------------------------------------------------------------------------------------------------------------------------------------------------------------------------------|-----------------------------------------------------------------------------------------------------------------------------------------------------------------------------------------------------------------------------------------------------------------------------------------------------------------------------------------------------------------------------------------------------------------------------------------------------------------------------------------------------------------------------------------------------------------------------------------------------------------------------------------------------------|

### Extra equipment

- |                                                                                                                                                                                                                                                                                                                                                                                                                                                                                                  |                                                                                                                                                                                                                                                                                                                                                                                                                                |
|--------------------------------------------------------------------------------------------------------------------------------------------------------------------------------------------------------------------------------------------------------------------------------------------------------------------------------------------------------------------------------------------------------------------------------------------------------------------------------------------------|--------------------------------------------------------------------------------------------------------------------------------------------------------------------------------------------------------------------------------------------------------------------------------------------------------------------------------------------------------------------------------------------------------------------------------|
| <ul style="list-style-type: none"> <li>• 12V connection in the box</li> <li>• Rear parking aid with rear view camera</li> <li>• Fog light</li> <li>• Package: Sound &amp; Climate with R-Link DAB+ (onboard computer - CD radio MP3 with Bluetooth hands-free system, USB, AUX-in - air conditioning with pollen filter - online multimedia system R-LINK Evolution)</li> <li>• Seats: Driver's seat height adjustable</li> <li>• Half-height wheel arch and cargo area side paneling</li> </ul> | <ul style="list-style-type: none"> <li>• Anti-theft alarm system</li> <li>• Center console between the front seats</li> <li>• Package: Easy Package (electrically adjustable, heated and folding exterior mirrors - light and rain sensor)</li> <li>• Package: Vario package (Vario partition - folding passenger seat)</li> <li>• Protective film entry driver's side</li> <li>• Cruise control with speed limiter</li> </ul> |
|--------------------------------------------------------------------------------------------------------------------------------------------------------------------------------------------------------------------------------------------------------------------------------------------------------------------------------------------------------------------------------------------------------------------------------------------------------------------------------------------------|--------------------------------------------------------------------------------------------------------------------------------------------------------------------------------------------------------------------------------------------------------------------------------------------------------------------------------------------------------------------------------------------------------------------------------|

## Brief expert findings

Documents submitted	At the time of the inspection, the registration certificate Part 2 (letter) was available, but the registration certificate Part 1 (certificate) was not. (Copy)
VIN comparison	The vehicle identification number (VIN) was read from the vehicle and its conformity with the submitted documents was verified during the inspection by the undersigned.
Inspection	The inspection conditions were sufficient for the assessment of the vehicle. Lifting equipment and a pit were available for examining the vehicle.
Test drive	No test drive/maneuvering was carried out during the inspection of the vehicle.
Engine function test	An engine test run was performed.

## Value reducing factors

No.	Component group	Description
1	Instrument panel	Centre console - front (Abdeckung OBD Stecker) - Missing - Replace
2	Wheel / tyres	Wheel rim - front right side - Damaged - Replace
3	Wheel / tyres	Tyre - front right side - Porous / cracked - Replace
4	Side panel - rear left side	Side panel - Scratch(es) - Smart repair
5	Body	B-pillar - left side - Scratch(es) - Smart repair
6	Front axle	Axles / undercarriage (wegen der beschädigten Felge) - Specify findings - Measure



No.	Component group	Description
7	Trim / covers	Boot lid - interior trim (Rechts) - Broken / torn - Replace
8	Trim / covers	Boot lid - interior trim (Links) - Broken / torn - Replace
9	Boot lid / rear door	Rear door - left side - Deformed - Repair and paint

## Wear and tear

No.	Component group	Description
1	Body	Body - Scratch(es) - No deduction
2	Body	Body - dent(s) - No deduction

The vehicle shows signs of wear commensurate with its age and use.

## Order/Scope of order

The order was placed to prepare a sales report for the vehicle described. This includes the following:

- Description of core relevant information about the vehicle
- Documentation of equipment features  
(*Delivery by third-party service providers*)
- Documentation of damage, defects, missing parts
- Documentation of previous damage, unrepaired previous damage, repainting
- a brief visual or functional inspection of the equipment details if possible.  
(*Functional tests of driver assistance systems are not included in the scope of services!*)
- a photo documentation of the vehicle

## Basis for the order

This product is based on the guidelines for vehicle returns and valuations of light commercial vehicles from Alphabet Fuhrparkmanagement GmbH. The expert makes the explicit findings in each individual case objectively within the framework of the specified standards based on his or her own expertise.

The vehicle inspection takes place in a disassembled state.

Damage or defects that can only be detected during disassembly/diagnosis work or through advanced knowledge remain within the scope of the prognosis risk. An extended risk exists for concealed defects caused by fraudulent deception and not identifiable by the expert.

Damage or defects resulting from normal use or wear and tear of the vehicle will be accepted according to the applicable standard.

There was no explicit identification or monetary consideration of the expected features within the product.

Features which in their nature and severity slightly exceed normal use but do not constitute unacceptable damage will be documented and identified under signs of use if necessary.

Damage or defects that can no longer be attributed to normal use or wear and tear according to the underlying standard are listed in the product under value-reducing factors.

Depending on the product specification, a monetary ID can be provided. If this takes place, the costs can be 100% d or pro rata depending on the vehicle's age and mileage.

## Previous damages

Apparently, no repaired previous damage could be found on the vehicle.

## Comments

Wartungshistorie gemäß Auftraggeber Informationen.





Figure 1: Diagonal front (left)



Figure 2: Diagonal front (right)



Figure 3: Diagonal rear (left)



Figure 4: Diagonal rear (right)



Figure 5: Interior - front



Figure 6: Interior - rear





Figure 7: Instrument cluster



Figure 8: Instrument panel



Figure 9: Interior 360° view



Figure 10: Cargo area



Figure 11: VIN



Figure 12: Mounted tyres



Figure 13: Documents



Figure 14: Additional tyres

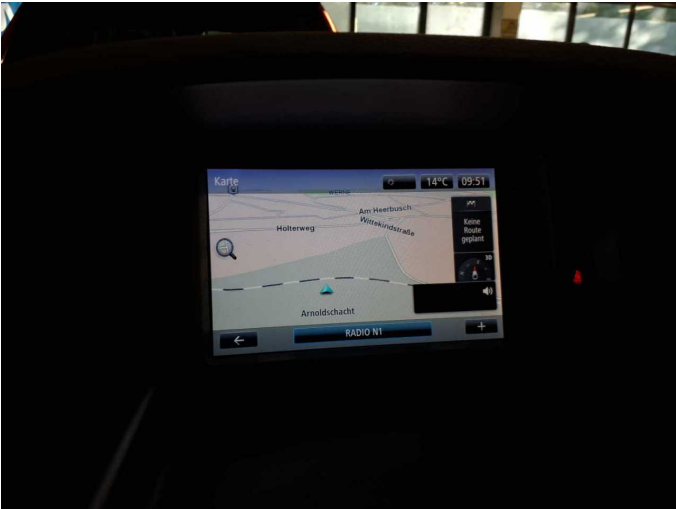


Figure 15: Navigation



Figure 16: Misc.



Figure 17: Misc.



Figure 18: Misc.





Figure 19: Misc.



Figure 20: Misc.



Figure 21: Misc.



Figure 22: Misc.

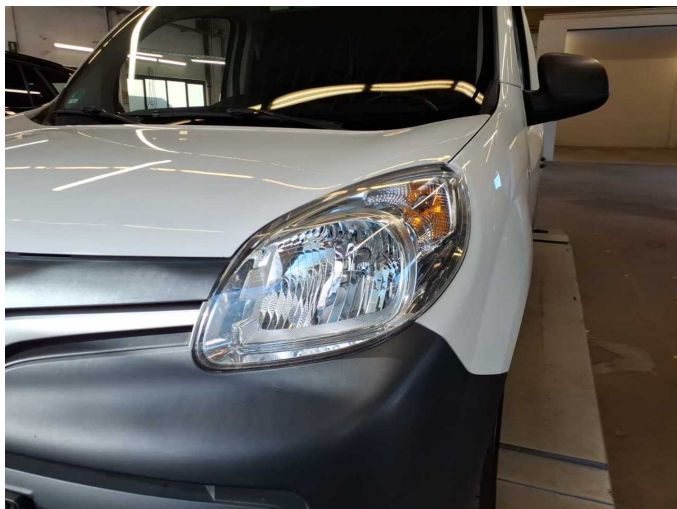


Figure 23: Misc.



Figure 24: Misc.





**Damage 1:** Instrument panel: Centre console - front (Abdeckung OBD Stecker) - Missing - Replace



**Damage 2:** Wheel / tyres: Wheel rim - front right side - Damaged - Replace



**Damage 2:** Wheel / tyres: Wheel rim - front right side - Damaged - Replace



**Damage 3:** Wheel / tyres: Tyre - front right side - Porous / cracked - Replace



**Damage 3:** Wheel / tyres: Tyre - front right side - Porous / cracked - Replace



**Damage 4:** Side panel - rear left side: Side panel - Scratch(es) - Smart repair



**Damage 4:** Side panel - rear left side: Side panel - Scratch(es) - Smart repair



**Damage 5:** Body: B-pillar - left side - Scratch(es) - Smart repair



**Damage 5:** Body: B-pillar - left side - Scratch(es) - Smart repair



**Damage 7:** Trim / covers: Boot lid - interior trim (Rechts) - Broken / torn - Replace



**Damage 7:** Trim / covers: Boot lid - interior trim (Rechts) - Broken / torn - Replace



**Damage 8:** Trim / covers: Boot lid - interior trim (Links) - Broken / torn - Replace



**Damage 8:** Trim / covers: Boot lid - interior trim (Links) - Broken / torn - Replace



**Damage 9:** Boot lid / rear door: Rear door - left side - Deformed - Repair and paint



**Damage 9:** Boot lid / rear door: Rear door - left side - Deformed - Repair and paint





# Wartungshistorie

(gemäß Auftraggeber Informationen)

Fahrgestellnummer: VF1WF000765656988  
Hersteller / Modell: RENAULT RENAULT Kangoo Rapid Blue dCi 95 Extra

Datum	KM-Stand	Beschreibung
20.05.2025	86.462	Motoröl b. Wartung; Ölfilter ern; Regelwartungsdienst; Reparatur Sonstiges; Wartung Sonstiges; Wartung Sonstiges
20.08.2024	73.785	HU + AU; Reparatur Sonstiges; Systemtest/Eigendiagnose; Wartung Sonstiges
20.11.2023	59.831	Batterie ern; Wartung Sonstiges
27.09.2023	57.831	Batterie ern; Bremse Sonstiges; Bremsklötze vorne; Bremsscheiben + Klötze v; Bremsscheiben vorne; Wartung Sonstiges
26.09.2023	57.831	Bremsflüssigkeit; Bremsflüssigkeit ern; Kraftstofffilter ern; Luftfiltereinsatz ern; Motoröl b. Wartung; Ölfilter ern; Regelwartungsdienst; Wartung Sonstiges; Wartung Sonstiges
18.07.2022	0	HU + AU
11.01.2022	27.860	Kleine Inspektion; Motoröl b. Wartung