



Expertise

Protocol number: 41601312
Order No. / Reference: 25101426
Inspection date: 17 Sept 2025

Manufacturer: Renault	Model: Kangoo Rapid Blue dCi 95 Extra
VIN: VF1WF000465656933	



Vehicle details	
Manufacturer / Type / Model / Equipment	
Renault Kangoo Rapid Blue dCi 95 Extra	
Vehicle Identification number	VF1WF000465656933
Mileage (Read)	63,824 km
First registration	31 Jul 2020
Number of holders	1
Next periodical technical inspection	10/2026
(Report on hand)	
Power / Engine displacement	70 kw / 1,461 ccm
Fuel type / Cylinder	Diesel / 4
Gearbox / Number of gears	Manual / 6
Type of drive	Front drive
Type of vehicle	Van
Colour / colour code	Mineral-Weiß
Doors / Seats	4 / 2
Upholstery type	Cloth
Colour of upholstery	Black-Grey



Vehicle details

Maintenance booklet / proof	digital proof / complete	Next maintenance in	14,861 km
Last maintenance on / at	10/2024 at 53,094 km		
Key is / should be	2 / 2	FZG documents	ZB#2 (B) was available (copy), ZB#1 (S) was not available
		Letter No.	FU175272
Previous damage / Accident	Detectable	Repainting	Detectable
Inspection conditions	sufficient	Lifting equipment / pit	yes
Test drive	Not performed	Engine function test	Performed
Manufacturer key number/ type code number	3333 / BLL 00057		
Emission standard	EURO6;WLTP;CH;PI/CI; N1 II	Fine dust sticker	
Permitted total weight	1,980 kg	Empty weight	

Tyres

Mounted tyres

#	Tyre size	Type of tyre	Manufacturer	Tread depth
1)	195/65 R15 95T	Summer tyres on Steel rim with wheel cover	Michelin	6mm / 6mm
2)	195/65 R15 95T	Summer tyres on Steel rim with wheel cover	Michelin	5mm / 5mm

Additional tyres

#	Tyre size	Type of tyre	Manufacturer	Tread depth
1)	195/65 R15 95T	Winter tyres on Steel	Dunlop	5mm / 5mm
2)	195/65 R15 95T	Winter tyres on Steel	Dunlop	5mm / 5mm

Replacement

Typ	Tyre size	Type of tyre	Manufacturer	Tread depth
E	195/65 R15 95T	Summer tyres on Steel	Michelin	7 mm

Legend: Tread depth information for tires on the left is in the first place, for tires on the right is in the second place on the axle in the direction of travel



Equipment

Standard equipment

- | | |
|--|--|
| <ul style="list-style-type: none"> • Storage compartment in front doors and dashboard • Driver's side airbag • Outside temperature display • Digital clock in the instrument panel • ESP with Extended Grip and Hill Start Assist • Transmission: 6-speed manual transmission • Front headrests (2), height adjustable • Paint finish: Uni • Mobility set • Upholstery: Cloth • Soot particle filter • Switching point display • Protective bar behind the driver's seat • Side protection reinforcement • Engine protection • Electronic immobilizer • Switchable ECO mode | <ul style="list-style-type: none"> • ABS with EBV • Exterior mirrors, electrically adjustable and heated • Brake assist • tachometer • Electric front windows • Rear doors, asymmetrical, with window • Plastic floor in the cargo area • Steering wheel height adjustable • Package: Storage package • Radio: CD radio DAB+ MP3 • Wheels: Tire size 195/65 R 15 • Sliding door right, closed • Side protection strips • Power steering • Lashing eyes in the load compartment floor • Central locking with radio remote control |
|--|--|

Extra equipment

- | | |
|--|--|
| <ul style="list-style-type: none"> • 12V connection in the box • Rear parking aid with rear view camera • Fog light • Package: Sound & Climate with R-Link DAB+ (onboard computer - CD radio MP3 with Bluetooth hands-free system, USB, AUX-in - air conditioning with pollen filter - online multimedia system R-LINK Evolution) • Seats: Driver's seat height adjustable • Half-height wheel arch and cargo area side paneling | <ul style="list-style-type: none"> • Anti-theft alarm system • Center console between the front seats • Package: Easy Package (electrically adjustable, heated and folding exterior mirrors - light and rain sensor) • Package: Vario package (Vario partition - folding passenger seat) • Protective film entry driver's side • Cruise control with speed limiter |
|--|--|

Brief expert findings

Documents submitted	At the time of the inspection, the registration certificate Part 2 (letter) was available, but the registration certificate Part 1 (certificate) was not. (Copy)
VIN comparison	The vehicle identification number (VIN) was read from the vehicle and its conformity with the submitted documents was verified during the inspection by the undersigned.
Inspection	The inspection conditions were sufficient for the assessment of the vehicle. Lifting equipment and a pit were available for examining the vehicle.
Test drive	No test drive/maneuvering was carried out during the inspection of the vehicle.
Engine function test	An engine test run was performed.

Value reducing factors

No.	Component group	Description
1	Instrument panel	Centre console - front (OBD Abdeckung) - Missing - Replace
2	Wheel / tyres	Tyre - front right side (nicht fahrbereit) - Damaged - Replace
3	Door - front right side	Door - Scratch(es) - Smart repair
4	Door - front left side	Door seal - Broken / torn - Replace
5	Bonnet	Bonnet - Scratch(es) - Paint



No.	Component group	Description
6	Trim / covers	Boot lid - interior trim (L+ R) - Broken / torn - Replace
7	Side panel - rear left side	Side panel - Deformed - Repair and paint
8	Side panel - rear right side	Side panel - Deformed - Repair and paint

Wear and tear

No.	Component group	Description
1	Body	Body - Scratch(es) - No deduction

The vehicle shows signs of wear commensurate with its age and use.

Previous damages

No.	Previous damage	Extent of damage (Net)
1	Rear, Side right, Provided by user / customer, from 23 Jun 2025	2.660,00 €
2	Side - left, Provided by user / customer, from 6 May 2025	3.024,16 €

Repainting

No.	Repainting
1	Boot lid / rear door, Side panel - rear left side, Professionally carried out, Invoice of repair done Non-existent

Paint coat thickness measurement

Boot lid / rear door	304 µm	Side panel - rear left side	163 µm
----------------------	--------	-----------------------------	--------

Order/Scope of order

The order was placed to prepare a sales report for the vehicle described. This includes the following:

- Description of core relevant information about the vehicle
- Documentation of equipment features
(Delivery by third-party service providers)
- Documentation of damage, defects, missing parts
- Documentation of previous damage, unrepaired previous damage, repainting
- a brief visual or functional inspection of the equipment details if possible.
(Functional tests of driver assistance systems are not included in the scope of services!)
- a photo documentation of the vehicle



Basis for the order

This product is based on the Alphabet Fuhrpark GmbH guidelines for vehicle returns and valuations. The expert makes the explicit findings in each individual case objectively within the framework of the specified standards based on his or her own expertise.

The vehicle inspection takes place in a disassembled state.

Damage or defects that can only be detected during disassembly/diagnosis work or through advanced knowledge remain within the scope of the prognosis risk. An extended risk exists for concealed defects caused by fraudulent deception and not identifiable by the expert.

Damage or defects resulting from normal use or wear and tear of the vehicle will be accepted according to the applicable standard.

There was no explicit identification or monetary consideration of the expected features within the product.

Features which in their nature and severity slightly exceed normal use but do not constitute unacceptable damage will be documented and identified under signs of use if necessary.

Damage or defects which, according to the underlying standard, can no longer be attributed to normal use or wear and tear are listed in the product under "Depreciating Factors".

Depending on the product specification, a monetary ID can be provided. If this takes place, the costs can be 100% d or pro rata depending on the vehicle's age and mileage.

Previous damages

According to available information previous damages were repaired at the vehicle. Traces of repairs, which allow conclusions about the area of repair, were not recognizable during the inspection.

Comments

Wartungshistorie gemäß Auftraggeber Informationen.



Figure 1: Diagonal front (left)



Figure 2: Diagonal front (right)



Figure 3: Diagonal rear (left)



Figure 4: Diagonal rear (right)



Figure 5: Interior - front



Figure 6: Interior - rear



Figure 7: Instrument cluster



Figure 8: Instrument panel



Figure 9: Interior 360° view



Figure 10: Cargo area

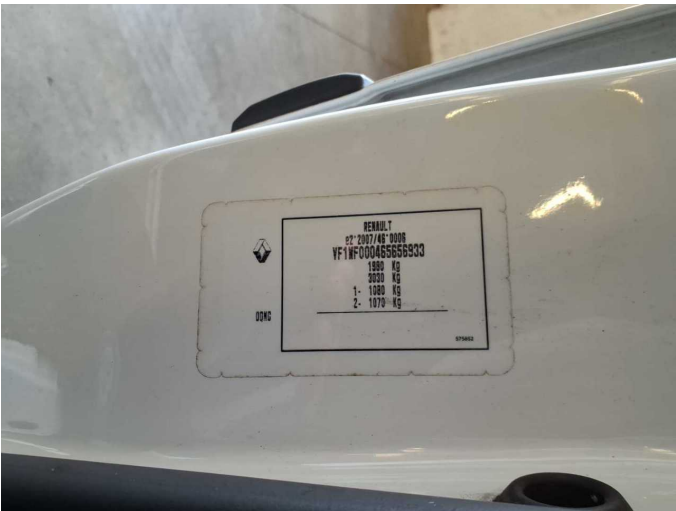


Figure 11: VIN



Figure 12: Mounted tyres



Figure 13: Documents



Figure 14: Documents



Figure 15: Additional tyres

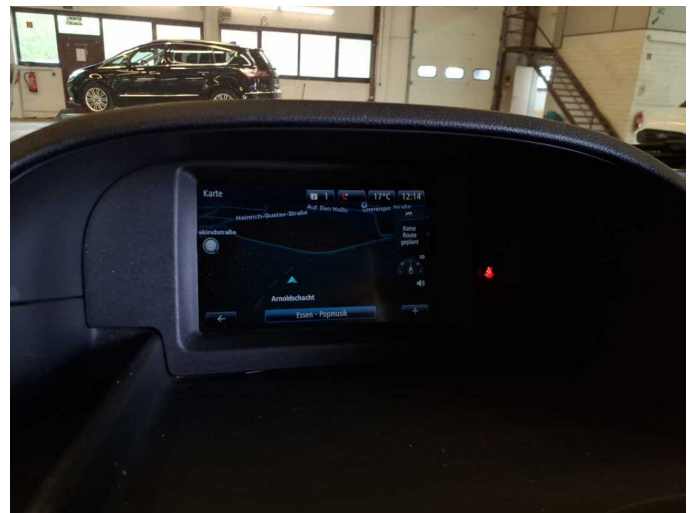


Figure 16: Navigation



Figure 17: Misc.



Figure 18: Misc.



Figure 19: Misc.



Figure 20: Misc.



Figure 21: Misc.



Figure 22: Misc.

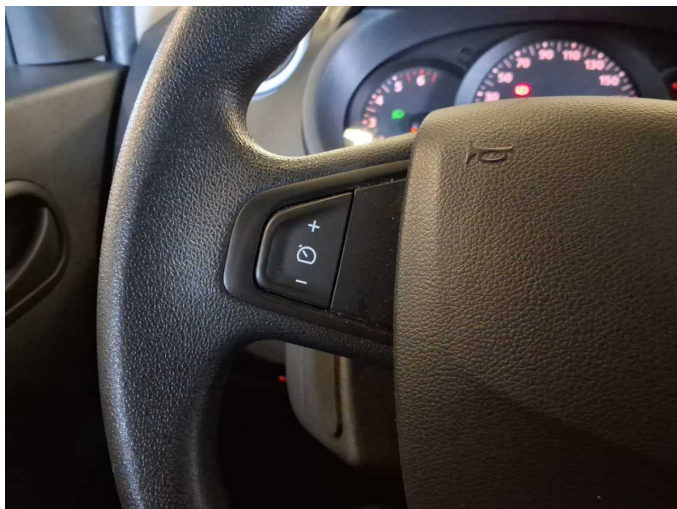


Figure 23: Misc.



Figure 24: Misc.



Figure 25: Misc.



Figure 26: Misc.



Damage 1: Instrument panel: Centre console - front (OBD Abdeckung) - Missing - Replace



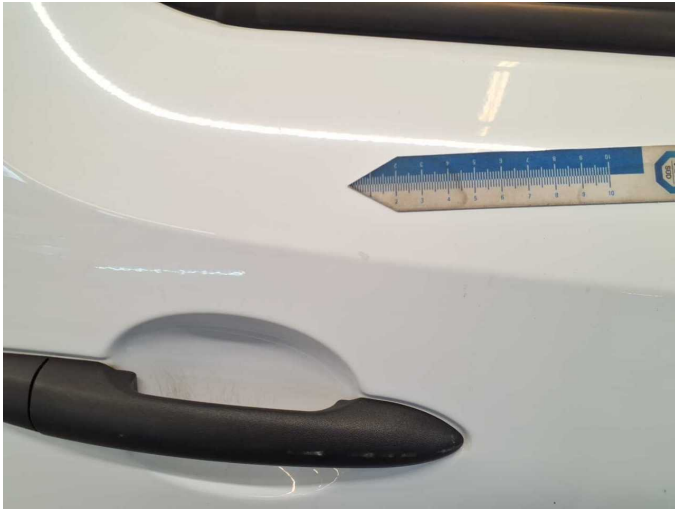
Damage 2: Wheel / tyres: Tyre - front right side (nicht fahrbereit) - Damaged - Replace



Damage 2: Wheel / tyres: Tyre - front right side (nicht fahrbereit) - Damaged - Replace



Damage 3: Door - front right side: Door - Scratch(es) - Smart repair



Damage 3: Door - front right side: Door - Scratch(es) - Smart repair



Damage 3: Door - front right side: Door - Scratch(es) - Smart repair



Damage 4: Door - front left side: Door seal - Broken / torn - Replace



Damage 4: Door - front left side: Door seal - Broken / torn - Replace



Damage 5: Bonnet: Bonnet - Scratch(es) - Paint



Damage 5: Bonnet: Bonnet - Scratch(es) - Paint



Damage 5: Bonnet: Bonnet - Scratch(es) - Paint



Damage 5: Bonnet: Bonnet - Scratch(es) - Paint



Damage 6: Trim / covers: Boot lid - interior trim (L+ R) - Broken / torn - Replace



Damage 6: Trim / covers: Boot lid - interior trim (L+ R) - Broken / torn - Replace



Damage 6: Trim / covers: Boot lid - interior trim (L+ R) - Broken / torn - Replace



Damage 6: Trim / covers: Boot lid - interior trim (L+ R) - Broken / torn - Replace



Damage 7: Side panel - rear left side: Side panel - Deformed - Repair and paint



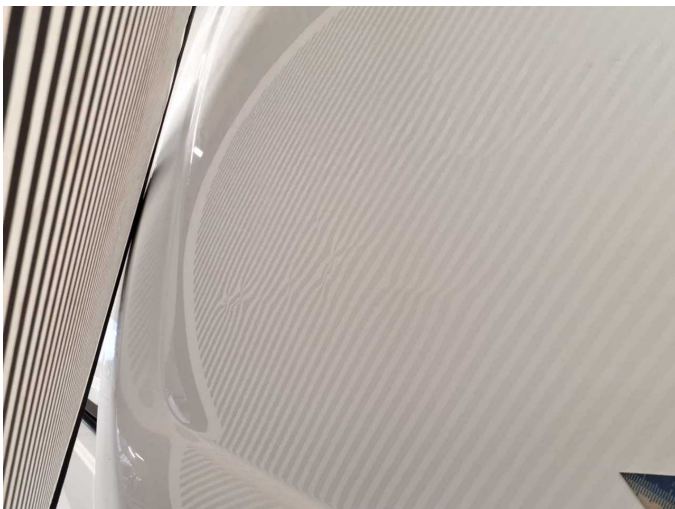
Damage 7: Side panel - rear left side: Side panel - Deformed - Repair and paint



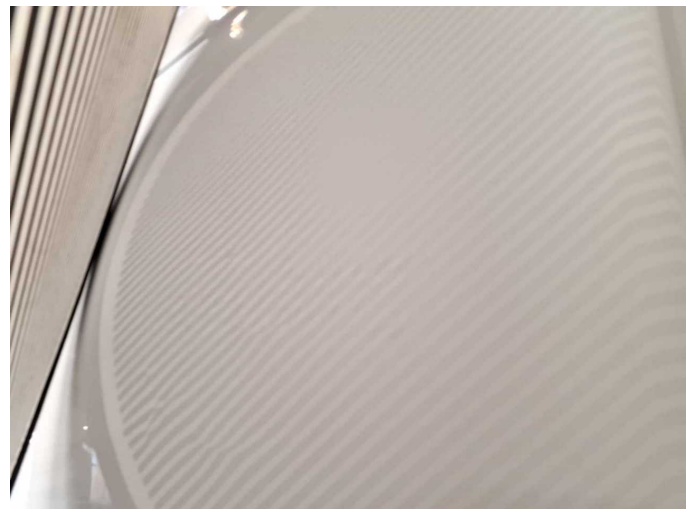
Damage 7: Side panel - rear left side: Side panel - Deformed - Repair and paint



Damage 8: Side panel - rear right side: Side panel - Deformed - Repair and paint



Damage 8: Side panel - rear right side: Side panel - Deformed - Repair and paint



Damage 8: Side panel - rear right side: Side panel - Deformed - Repair and paint



Repainting 1: Boot lid / rear door, Side panel - rear left side



Repainting 1: Boot lid / rear door, Side panel - rear left side



Repainting 1: Boot lid / rear door, Side panel - rear left side



Repainting 1: Boot lid / rear door, Side panel - rear left side



Wartungshistorie

(gemäß Auftraggeber Informationen)

Fahrgestellnummer: VF1WF000465656933
Hersteller / Modell: RENAULT RENAULT Kangoo Rapid Blue dCi 95 Extra

Datum	KM-Stand	Beschreibung
08.10.2024	53.094	HU + AU; Wartung Sonstiges
23.05.2024	48.685	Bremsflüssigkeit; Bremsflüssigkeit ern; Kraftstofffilter ern; Luftfiltereinsatz ern; Motoröl b. Wartung; Ölfilter ern; Regelwartungsdienst; Wartung Sonstiges; Wartung Sonstiges
19.12.2023	40.509	Bremse Sonstiges; Bremsklötze vorne; Bremsscheiben vorne; Wartung Sonstiges
12.09.2023	34.128	Batterie ern; Wartung Sonstiges
23.12.2022	24.653	Systemtest/Eigendiagnose
15.08.2022	17.856	HU + AU; Motoröl b. Wartung; Regelwartungsdienst