



RENAULT Koleos

Koleos BLUE dCi 185 X-tronic

VIN NO VF1RZG00168366175
Registration Number 0168366175



MOT Date

2025-05-01

Last Service

-

Number of Owners

1

Last Service Mileage

-

Number of Keys

2

First Registration Date

2022-05-12

Odometer Reading

33462 km

Country First Registered

Germany

Inspection Report Summary

Customer	BCA Online	Report Number	P20250922125931
Inspection Date / Place	2025-09-22 / BCA Berlin	Cosmetic Grade	2

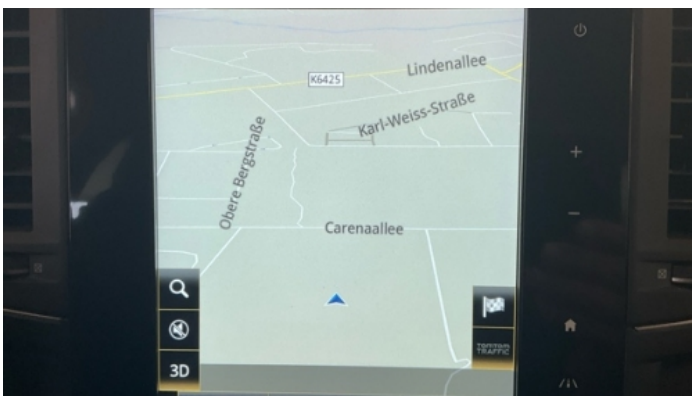
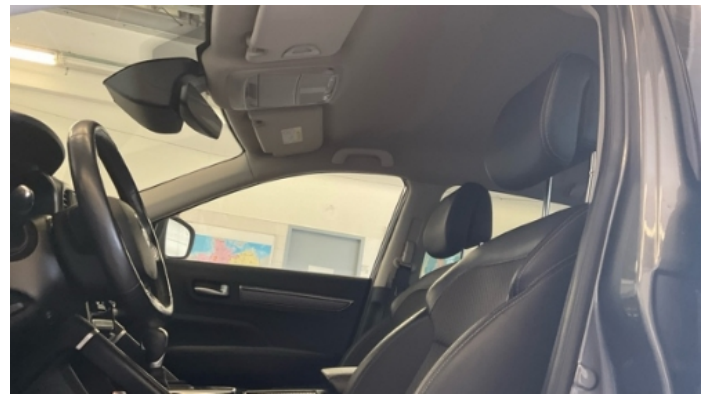
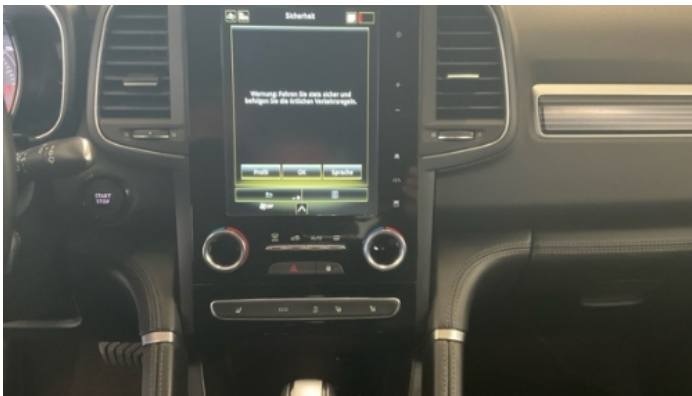
Vehicle Summary

Vehicle Condition	Runner	VAT Type	Qualifying
Fuel Type	Diesel	Road Worthy	Unknown
Colour	Grey	Engine Size (cc)	1997
Engine Size	2.0	No of Doors	5
Body Type	SUV	Drive Train	Front
Seat Colour		No of Seats	5
Seat Covering Name	Grau	Seat Covering	Cloth/Synthetic Leather
Charging Cables		NEDC CO2 Rating (q/km)	143
Gearbox Type	Automatic		

Vehicle History & Documents

Service Book Available	Missing	Next Service Mileage	km
Previous Usage		Imported	No
Manufacturer Warranty			







Equipment

Tinted Glass	Alloys wheels	Cruise control	Front parking sensors
Remote central locking	Roof rails	Stability control	Electric tailgate
Radio	Airbag Status	Anti-lock braking	Front fog lamps
Remote adjusting wing mirrors	Reversing Camera	Satellite navigation	Electrically folding wing mirrors
LED Headlamps	Rear parking sensors		

Equipment Details

Air Conditioning	Dual Zone Climate Control	Alloy Wheel Size	18
Seat Heating	Front		

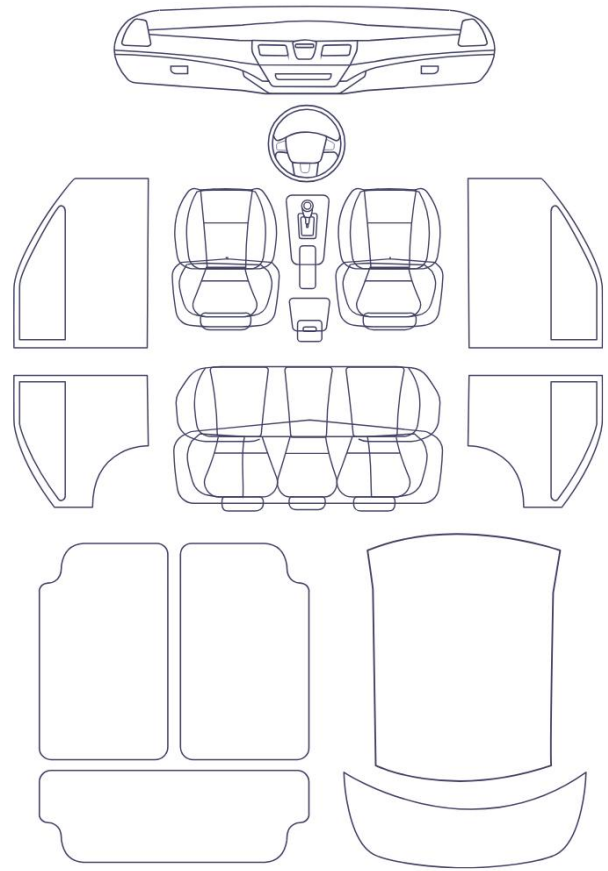
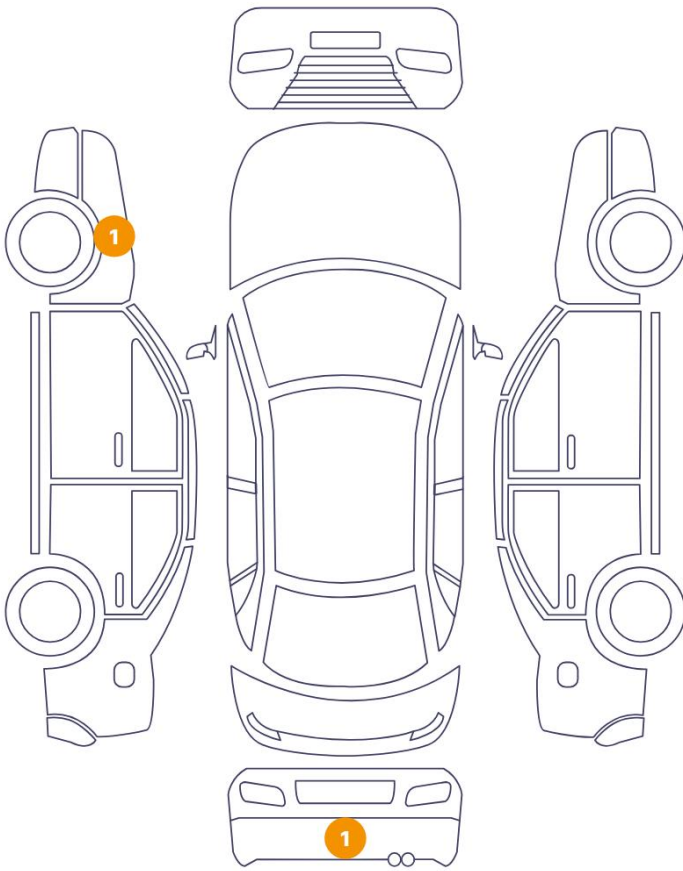
Wheels & Tyres

Left Rear Tyre Depth	5	Right Front Tyre Depth	4
Left Front Tyre Depth	5	Right Rear Tyre Depth	7

Cosmetic Damage

2 Schäden

0 Schäden



Component	Damage	Comments
1 Fender / Front Left	Paint / Scratch / Scuff	
2 Bumper / Back	Paint / Scratch / Scuff	



1. Fender / Front Left
Paint / Scratch / Scuff -



2. Bumper / Back
Paint / Scratch / Scuff -

Mechanical Condition

Control Lights

ABS Warning Light	✓	ESP Fault/Traction Control Malfunction Light	✓
Airbag Warning Light	✓	Oil Pressure Warning Light	✓
Brake Warning Light	✓	Power Steering Warning Light	✓
Alternator / Battery	✓	No Dashboard Lights	✓
Tire Pressure Monitoring System	✓	Display Defect	✓

Engine

Engine Status / EML	✓	Engine Leak Visible	✓
Engine Starts	✓		

Equipments Test


Electric Windows	✓	Navigation System	✓
Audio Equipment	✓	AC / Heating System	✓
Main & Spare Keys Functioning	✓	Parking Sensors / Cameras Functioning	✓
Other Equipments	✓		

Levels

Brakes Fluid	✓	Coolant Fluid	✓
--------------	---	---------------	---

Test Drive Inspection

Steering Wheel

Steering | Noise / Anomaly 

Engine


Engine Noise  The Gears Scratch / Skip / Abnormal Operation 

Fume Quantity  Power Loss 

Brake

Brake System Anomaly 

General

Test Driven Status 

 **No troubles detected, good condition or correct tests, according to vehicle age and mileage**

 **Damages or malfunction detected that requires repairs by the buyer**

 **Not applicable**

 **Not tested**

Disclaimer

Please also note the "UserGuide condition report", which shows the scope of the vehicle description.

[User Guide](#)