



RENAULT ARKANA

Arkana TCe 140 EDC - 23 Techno

VIN NO VF1RJL009UC489586
Registration Number GX863EP



MOT Date



Last Service



Number of Owners



Last Service Mileage



Number of Keys



First Registration Date



2024-05-29

Odometer Reading



23149 km

Country First Registered



France

Inspection Report Summary

Customer	BCAauto Encheres	Report Number	P20250515152601
Inspection Date / Place	2025-05-15 / BCA BETHUNE	Cosmetic Grade	5

Vehicle Summary

Vehicle Condition	Non-Runner	VAT Type	Qualified - Normal Rate
Fuel Type	Petrol	Gearbox Type	Automatic
Colour	Black	Engine Size (cc)	1333
Engine Size	1.3	No of Doors	5
Body Type	Stationwagon / Estate	Drive Train	Front
Seat Colour		No of Seats	5
Seat Covering Name		Seat Covering	Cloth
Charging Cables		WLTP CO2 Emissions	

Vehicle History & Documents

Service Book Available	Missing	Next Service Mileage	km
Previous Usage	Normal Use	Imported	
Manufacturer Warrenty			



Equipment

Central locking	Radio	Alloys wheels	Front parking sensors
Satellite navigation	Electrically folding wing mirrors	Rear parking sensors	Cruise control
Power assisted steering			

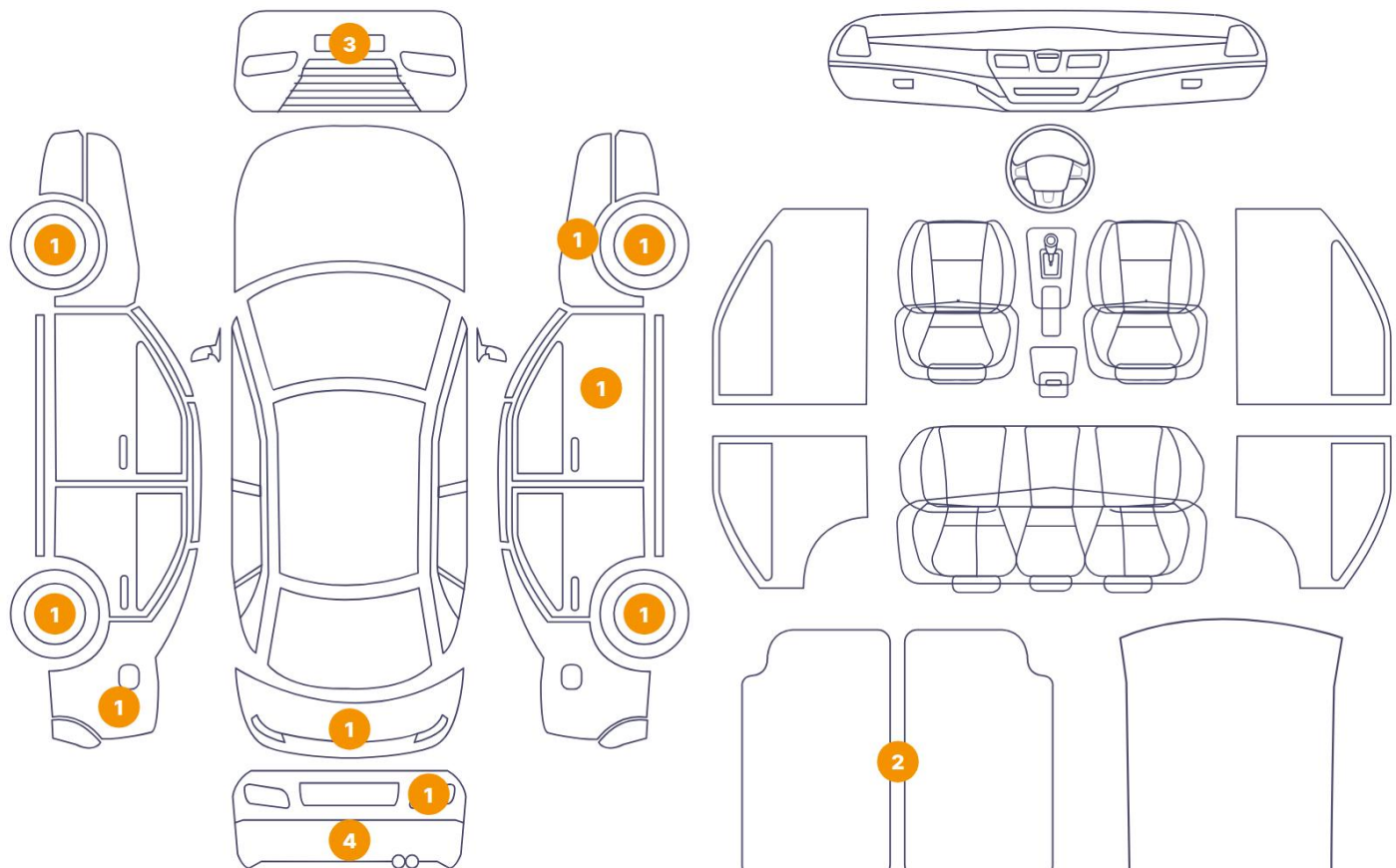
Equipment Details

Seat Heating	No	Air Conditioning	Yes
Sunroof Type	Tilt/Slide Steel		

Cosmetic Damage

16 Dommages

2 Dommages



Component	Damage	Comments
1 Floor Carpet	Interior / Dirty	
2 Floor Carpet	Interior / Dirty	
3 Corner Bumper / Front Right	Paint / Scratch / Scuff	
4 Bumper / Front	Paint / Scratch / Scuff	
5 Corner Bumper / Front Left	Paint / Scratch / Scuff	
6 Rim / Front Left	Out of Bodywork / Scratch	
7 Side Panel / Back Left	Bodywork / Assembly	
8 Rim / Back Left	Out of Bodywork / Scratch	
9 Corner Bumper / Back Left	Missing Part	
10 Corner Bumper / Back Left	Bodywork / Dent / Deformation	
11 Bumper / Back	Bodywork / Dent / Deformation	
12 Tailgate	Bodywork / Dent / Deformation	
13 Corner Bumper / Back Right	Bodywork / Dent / Deformation	

14	Back Light / Right	Missing Part
15	Rim / Back Right	Out of Bodywork / Scratch
16	Mirror / Front Right	Paint / Scratch / Scuff
17	Fender / Front Right	Paint / Scratch / Scuff
18	Rim / Front Right	Out of Bodywork / Scratch



1. Floor Carpet
Interior / Dirty -



2. Floor Carpet
Interior / Dirty -



3. Corner Bumper / Front Right
Paint / Scratch / Scuff -



4. Bumper / Front
Paint / Scratch / Scuff -



5. Corner Bumper / Front Left
Paint / Scratch / Scuff -



6. Rim / Front Left
Out of Bodywork / Scratch -



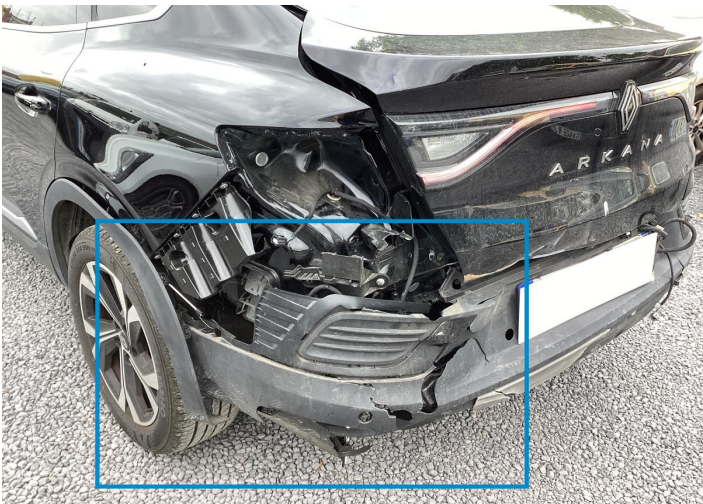
7. Side Panel / Back Left
Bodywork / Assembly -



8. Rim / Back Left
Out of Bodywork / Scratch -



9. Corner Bumper / Back Left
Missing Part -



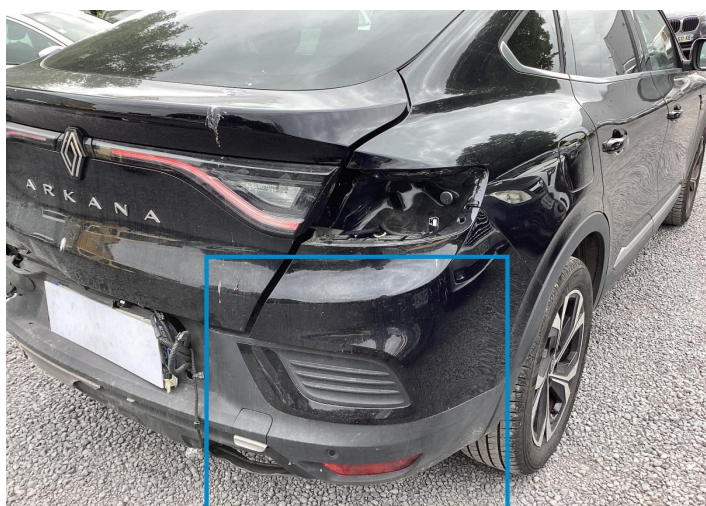
10. Corner Bumper / Back Left
Bodywork / Dent / Deformation -



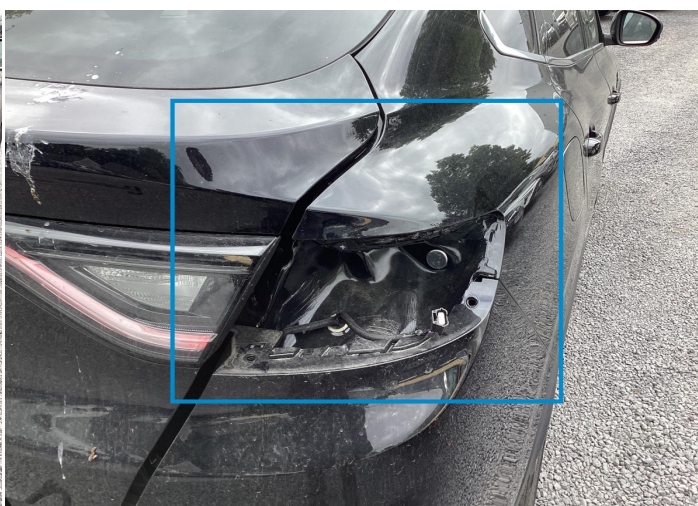
11. Bumper / Back
Bodywork / Dent / Deformation -



12. Tailgate
Bodywork / Dent / Deformation -



13. Corner Bumper / Back Right
Bodywork / Dent / Deformation -



14. Back Light / Right
Missing Part -



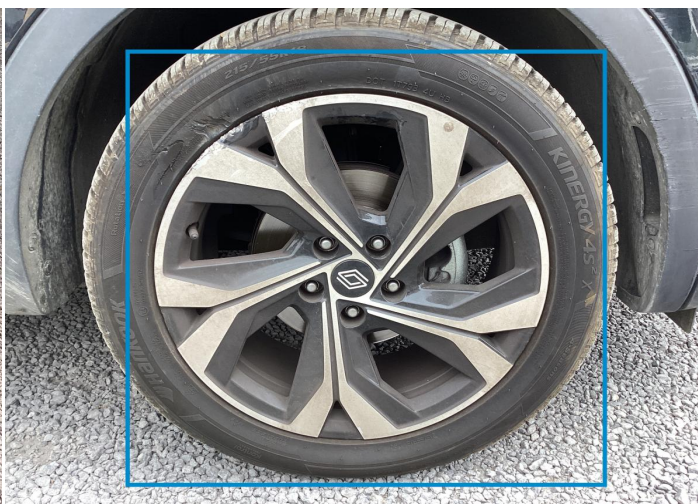
15. Rim / Back Right
Out of Bodywork / Scratch -



16. Mirror / Front Right
Paint / Scratch / Scuff -




17. Fender / Front Right
Paint / Scratch / Scuff -



18. Rim / Front Right
Out of Bodywork / Scratch -

Mechanical Condition


Tyres

Presence Anti-Theft Lock Nut 

 *No troubles detected, good condition or correct tests, according to vehicle age and mileage*

 *Damages or malfunction detected that requires repairs by the buyer*

 *Not applicable*

 *Not tested*

Disclaimer Section

The test drive is done on a flat surface and lasts about 2 minutes. The driven distance is a minimum of 300 meters, including a u-turn, an acceleration and a braking phase. The highest speed achieved during this test is 50km/h. The mechanical check is a visual and dynamic diagnosis without any disassembly. We cannot guarantee any mechanical wear part.