



RENAULT ARKANA

Arkana mild hybrid 140 EDC GSR2 Evolution

VIN NO VF1RJL008UC482743
Registration Number GX841BT



MOT Date	Number of Owners	Number of Keys	Odometer Reading
-	-	1	60470 km
Last Service	Last Service Mileage	First Registration Date	Country First Registered
-	-	2024-05-23	-

Inspection Report Summary

Customer	BCAuto Encheres	Report Number	P20250826135859
Inspection Date / Place	2025-08-26 / BCA BETHUNE	Cosmetic Grade	4

Vehicle Summary

Vehicle Condition	Not Movable	VAT Type	Qualified - Normal Rate
Fuel Type	Petrol	Gearbox Type	Automatic
Colour	Blue	Engine Size (cc)	1333
Engine Size	1.3	No of Doors	5
Body Type	Stationwagon / Estate	Drive Train	Front
Seat Colour		No of Seats	5
Charging Cables		WLTP CO2 Emissions	

Vehicle History & Documents

Service Book Available	-	Next Service Mileage	km
Previous Usage	Normal Use	Imported	
Manufacturer Warrenty			





Equipment

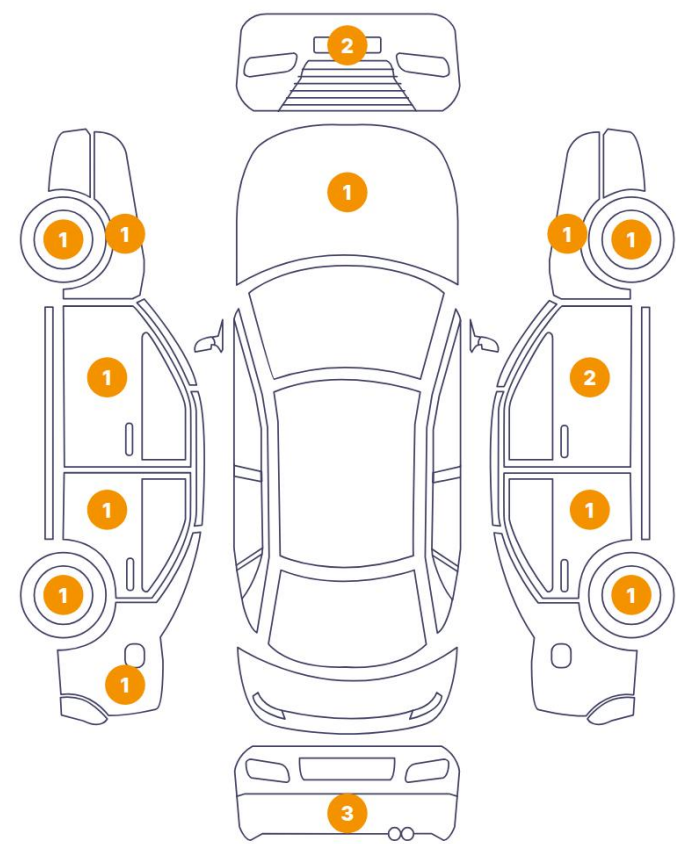
Central locking	Radio	Alloys wheels	Power assisted steering
Electrically folding wing mirrors	Rear parking sensors	Cruise control	Satellite navigation

Equipment Details

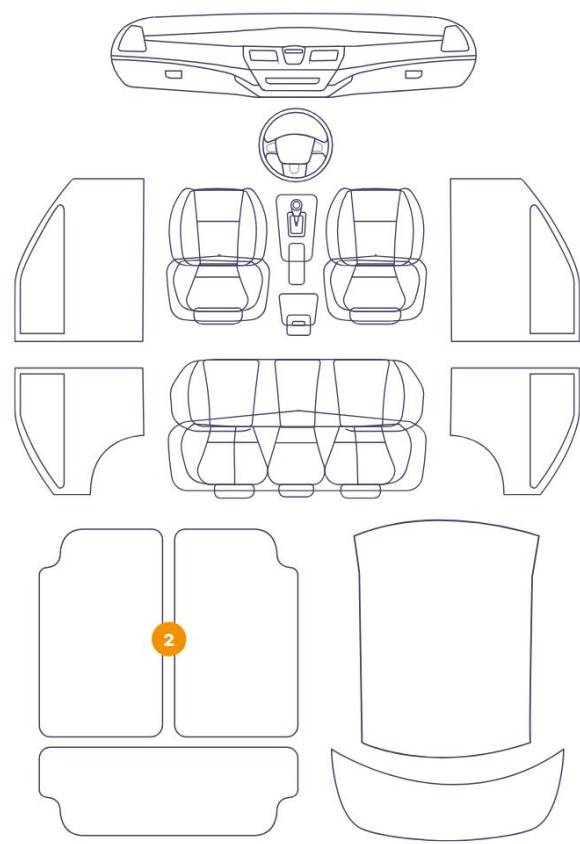
Seat Heating	No	Air Conditioning	Yes
Sunroof Type	Tilt/Slide Steel		

Cosmetic Damage

18 Dommages



2 Dommages

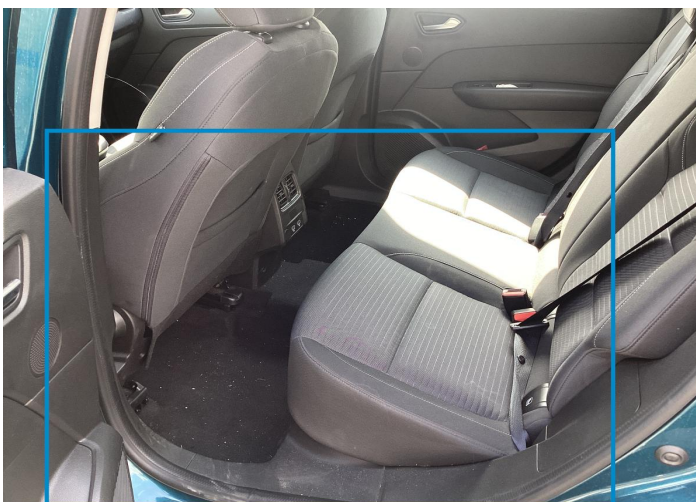


Component		Damage	Comments
1	Floor Carpet	Interior / Dirty	
2	Floor Carpet	Interior / Dirty	
3	Hood	Bodywork / Dent / Deformation	
4	Bumper / Front	Bodywork / Dent / Deformation	
5	Bumper / Front	Bodywork / Dent / Deformation	
6	Fender / Front Left	Bodywork / Assembly	
7	Rim / Front Left	Out of Bodywork / Scratch	
8	Door / Front Left	Paint / Scratch / Line	
9	Door / Back Left	Paint / Scratch / Line	
10	Rim / Back Left	Out of Bodywork / Scratch	
11	Side Panel / Back Left	Paint / Scratch / Line	
12	Corner Bumper / Back Left	Paint / Scratch / Scuff	
13	Bumper / Back	Paint / Scratch / Scuff	

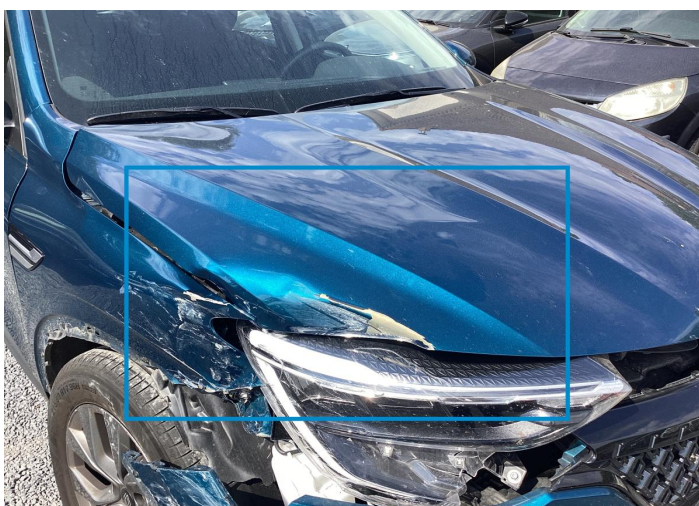
14	Corner Bumper / Back Right	Paint / Scratch / Scuff
15	Rim / Back Right	Out of Bodywork / Scratch
16	Door / Back Right	Paint / Scratch / Line
17	Door / Front Right	Paint / Scratch / Line
18	Mirror / Front Right	Paint / Scratch / Scuff
19	Fender / Front Right	Bodywork / Dent / Deformation
20	Rim / Front Right	Out of Bodywork / Breakage



1. Floor Carpet
Interior / Dirty -



2. Floor Carpet
Interior / Dirty -



3. Hood
Bodywork / Dent / Deformation -



4. Bumper / Front
Bodywork / Dent / Deformation -



5. Bumper / Front
Bodywork / Dent / Deformation -



6. Fender / Front Left
Bodywork / Assembly -



7. Rim / Front Left
Out of Bodywork / Scratch -



8. Door / Front Left
Paint / Scratch / Line -



9. Door / Back Left
Paint / Scratch / Line -



10. Rim / Back Left
Out of Bodywork / Scratch -



11. Side Panel / Back Left
Paint / Scratch / Line -



12. Corner Bumper / Back Left
Paint / Scratch / Scuff -



13. Bumper / Back
Paint / Scratch / Scuff -



14. Corner Bumper / Back Right
Paint / Scratch / Scuff -



15. Rim / Back Right
Out of Bodywork / Scratch -



16. Door / Back Right
Paint / Scratch / Line -



17. Door / Front Right
Paint / Scratch / Line -



18. Mirror / Front Right
Paint / Scratch / Scuff -




19. Fender / Front Right
Bodywork / Dent / Deformation -



20. Rim / Front Right
Out of Bodywork / Breakage -

Mechanical Condition


Tyres

Presence Anti-Theft Lock Nut 

 *No troubles detected, good condition or correct tests, according to vehicle age and mileage*

 *Damages or malfunction detected that requires repairs by the buyer*

 *Not applicable*

 *Not tested*

Disclaimer Section

The test drive is done on a flat surface and lasts about 2 minutes. The driven distance is a minimum of 300 meters, including a u-turn, an acceleration and a braking phase. The highest speed achieved during this test is 50km/h. The mechanical check is a visual and dynamic diagnosis without any disassembly. We cannot guarantee any mechanical wear part.