



RENAULT Captur

Captur TCe Mild Hybrid 140 EDC GPF

VIN NO VF1RJB00871141837
Registration Number 0871141837



MOT Date	Number of Owners	Number of Keys	Odometer Reading
-	1	2	20014 km
Last Service	Last Service Mileage	First Registration Date	Country First Registered
-	-	2023-11-01	Germany

Inspection Report Summary

Customer	BCA Online	Report Number	P20250918123810
Inspection Date / Place	2025-09-18 / BCA Berlin	Cosmetic Grade	1

Vehicle Summary

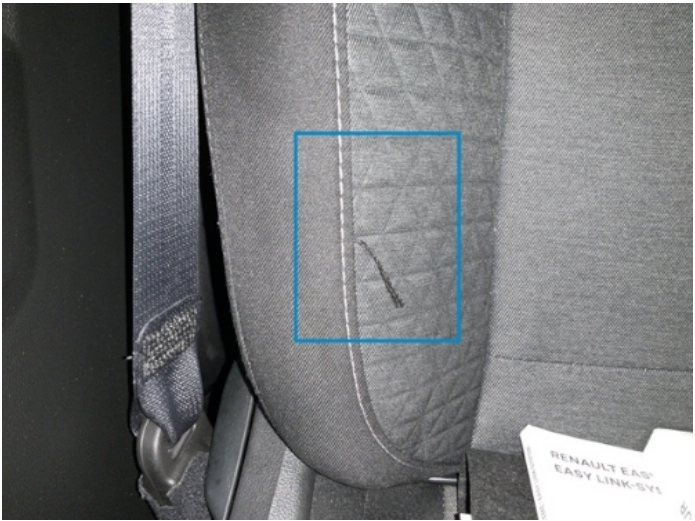
Vehicle Condition	Runner	VAT Type	Qualifying
Fuel Type	Petrol	Road Worthy	Yes
Colour	Red	Engine Size (cc)	1332
Engine Size	1.3	No of Doors	5
Body Type	SUV	Drive Train	Front
Seat Colour		No of Seats	5
Seat Covering Name	Schwarz	Seat Covering	Cloth
Charging Cables		NEDC CO2 Rating (q/km)	121
Gearbox Type	Automatic		

Vehicle History & Documents

Service Book Available	Present Unrecorded	Next Service Mileage	km
Previous Usage		Imported	No
Manufacturer Warrenty			







Equipment

USB Socket	Alloys wheels	Anti-lock braking	Auxiliary Socket
Cruise control	Front parking sensors	Remote central locking	Satellite navigation
Stability control	Leather steering wheel	Radio	Rear parking sensors
Airbag Status	AndroidAuto	AppleCarPlay	Bluetooth telephone interface
Digital Radio	Remote adjusting wing mirrors	Reversing Camera	Split folding rear seats
Electrically folding wing mirrors	LED Headlamps	Rain sensitive windscreen wipers	

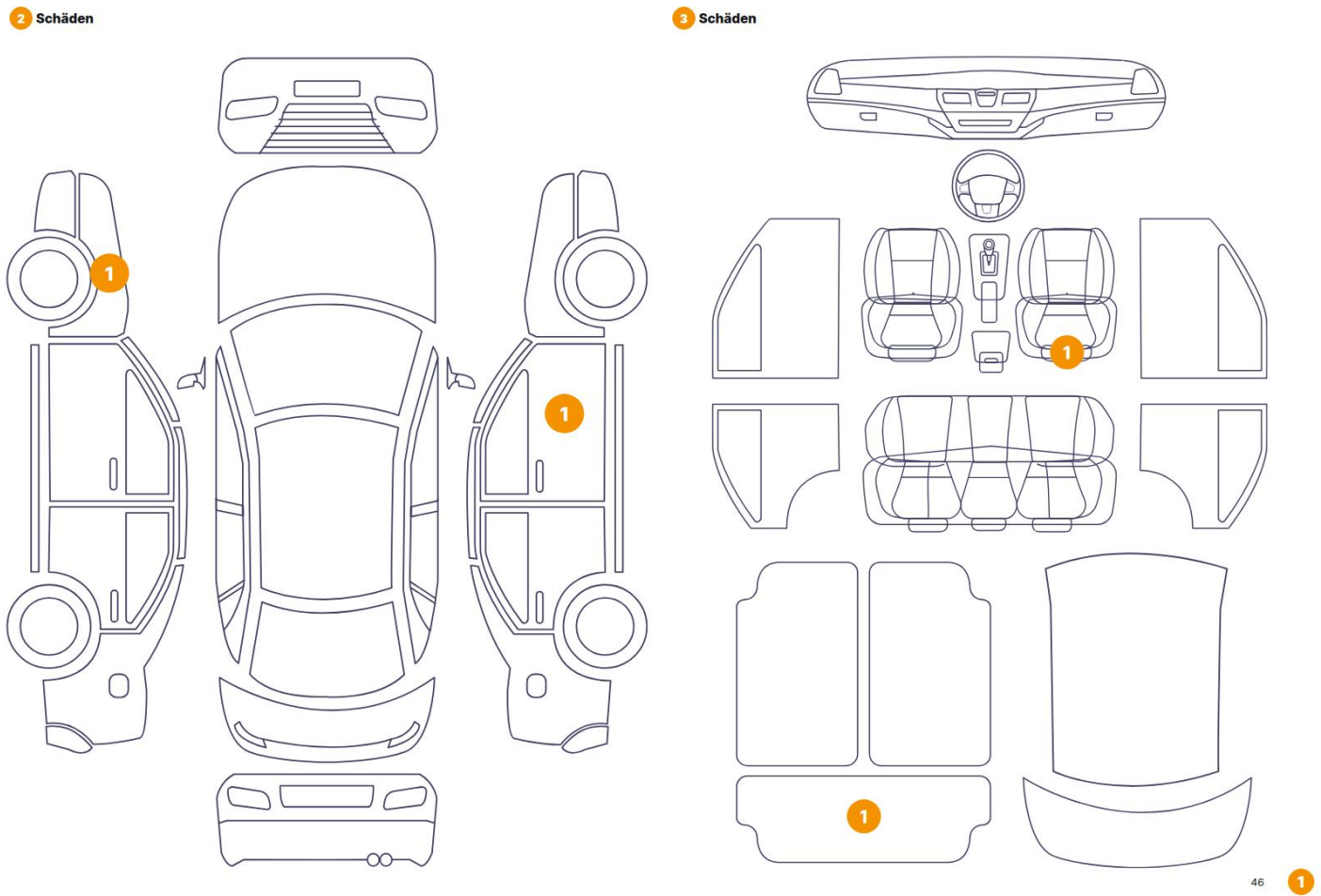
Equipment Details

Air Conditioning	Climate Control	Alloy Wheel Size	17
------------------	-----------------	------------------	----

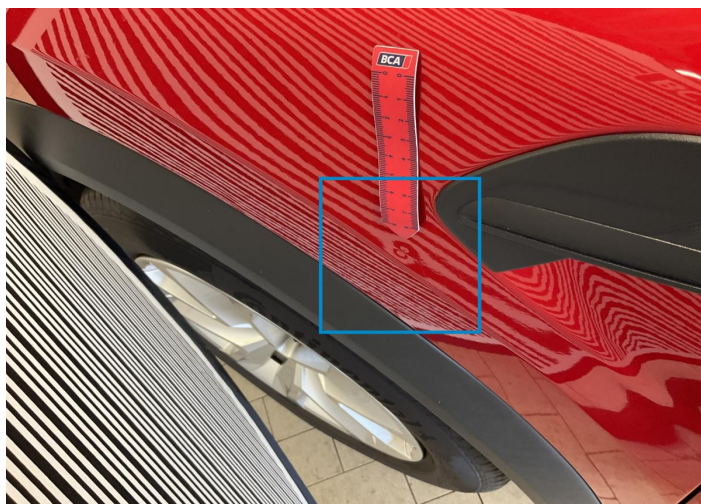
Wheels & Tyres

Left Rear Tyre Depth	7	Right Rear Tyre Depth	7
Left Front Tyre Depth	6	Right Front Tyre Depth	6

Cosmetic Damage



Component	Damage	Comments
1 Fender / Front Left	Bodywork / Dent / Deformation	
2 Luggage Space Cover / Back	Interior / Missing	
3 Other	Interior / Worn - out	
4 Mirror / Front Right	Paint / Scratch / Scuff	
5 Seat / Front Right	Interior / Dysfunctional	



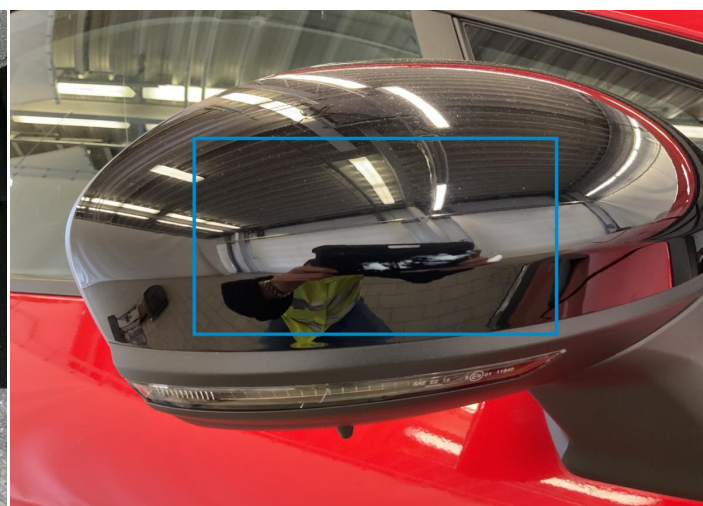
1. Fender / Front Left
Bodywork / Dent / Deformation -



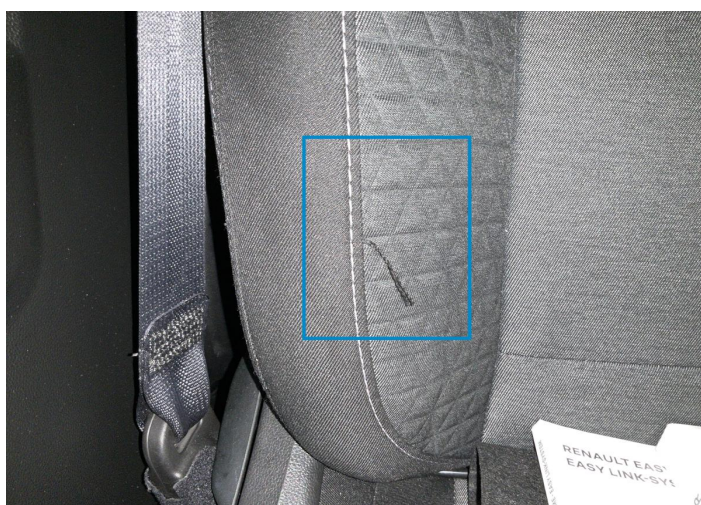
2. Luggage Space Cover / Back
Interior / Missing -



3.
Interior / Worn - out -



4. Mirror / Front Right
Paint / Scratch / Scuff -



5. Seat / Front Right
Interior / Dysfunctional -

Mechanical Condition

Equipments Test

Central Locking	✓	Electric Windows	✓
Audio Equipment	✓	AC / Heating System	✓
Main & Spare Keys Functioning	✓	Navigation System	✓
Parking Sensors / Cameras Functioning	✓	Other Equipments	✓

Control Lights

ABS Warning Light	✓	ESP Fault/Traction Control Malfunction Light	✓
Airbag Warning Light	✓	Oil Pressure Warning Light	✓
Brake Warning Light	✓	Power Steering Warning Light	✓
Alternator / Battery	✓	No Dashboard Lights	✓
Service Light	⚠	Display Defect	✓

Engine

Engine Status / EML	✓	Engine Leak Visible	✓
Engine Starts	✓		

Gearbox

Gear Box	✓
----------	---

Levels

Brakes Fluid	✓	Coolant Fluid	⚠
--------------	---	---------------	---

Test Drive Inspection

Steering Wheel			
Steering Noise / Anomaly		✓	
Engine			
Engine Noise	✓	The Gears Scratch / Skip / Abnormal Operation	✓
Fume Quantity	✓	Power Loss	✓
Brake			
Brake System Anomaly		✓	
General			
Test Driven Status		✓	
✓ <i>No troubles detected, good condition or correct tests, according to vehicle age and mileage</i>			
! <i>Damages or malfunction detected that requires repairs by the buyer</i>			
NA <i>Not applicable</i>			
= <i>Not tested</i>			

Disclaimer

Please also note the "UserGuide condition report", which shows the scope of the vehicle description.

[User Guide](#)