



Expertise

Protocol number: 41850648
Order number / reference: 25262023
Inspection date: 7 Oct 2025

Manufacturer: Renault	Model: Clio TCe 90 BUSINESS EDITION
VIN: VF1RJA00268828232	



Vehicle details	
Manufacturer / Type / Model / Equipment	
Renault Clio TCe 90 BUSINESS EDITION	
Vehicle Identification number	VF1RJA00268828232
Mileage (Read)	84,165 km
First registration	29 Aug 2022
Number of holders	1
Power / Engine displacement	67 kw / 999 ccm
Fuel type / Cylinder	Petrol / 3
Gearbox / Number of gears	Manual / 6
Type of drive	Front drive
Type of vehicle	Saloon car
Colour / colour code	Arktis-Weiß
Doors / Seats	5 / 5
Upholstery type	Cloth
Colour of upholstery	Anthracite-Black



Vehicle details

Maintenance booklet / proof	digital proof / complete	Next maintenance in	28,900 km
Last maintenance on / at	08/2025 at 83,059 km		
Key is / should be	2 / 2	FZG documents	ZB#2 (B) was available (copy), ZB#1 (S) was not available
		Letter No.	GN281317
Previous damage / Accident	None detectable	Repainting	None detectable
Inspection conditions	sufficient	Lifting equipment / pit	yes
Test drive	Not performed	Engine function test	Performed
Manufacturer key number/ type code number	3333 / BNX 00170		
Emission standard	EURO6;WLTP;AP;PI/CI; M, N1 I	Fine dust sticker	
Permitted total weight	1,595 kg	Empty weight	

Tyres

Mounted tyres

#	Tyre size	Type of tyre	Manufacturer	Tread depth
1)	195/55 R16 87H	All-season tyres on Steel rim with wheel cover	Continental	5mm / 5mm
2)	195/55 R16 87H	All-season tyres on Steel rim with wheel cover	Continental	6mm / 6mm

Replacement

Typ	Tyre size	Type of tyre	Manufacturer	Tread depth
	Tirefit	Expiration date 09/2027		

Legend: Tread depth information for tires on the left is in the first place, for tires on the right is in the second place on the axle in the direction of travel



Equipment

Standard equipment

- | | |
|---|--|
| <ul style="list-style-type: none"> • Airbags: • Anti-lock braking system • Exterior mirrors electrically folding, adjustable and heated • Exterior mirror housings painted in body color • On-board computer • tachometer • Rear parking aid • Rims: Flexwheel "Amicitia" 16" • Transmission: Manual transmission (6-speed) • Rear window wiper • Air conditioning • Headrests (3) rear height adjustable • Steering wheel with leather-look cover • Navigation: EASY LINK • Emergency braking assistant with pedestrian detection • Upholstery: Cloth • Tire pressure monitoring system indirect • Power steering, electric • Safety distance warning • Front sun visors (2) • 12 volt socket at the front • Daytime running light • Front door handles painted in body color • Full-LED headlights LED PURE VISION • Central locking with radio remote control | <ul style="list-style-type: none"> • Analogue speedometer instrument with TFT display • Automatic locking of doors while driving (can be deactivated) • Hill start assist • brake light third • eCall emergency call system • Electronic Stability Program (ESP) • Electric front windows • Back window, heater • Isofix child seat anchorage system • Headrests (2) front • Paint finish: Uni • Light sensor • Fog light • Package: Infotainment package • Tires: Mobility Set • Rear seat backrest asymmetrically split folding (1/3, 2/3) • seat belts • Seats: Driver's seat and steering wheel height adjustable • Lane departure warning • Body-colored bumpers • Cruise pilot • Traffic sign recognition • Immobiliser |
|---|--|

Extra equipment

- | | |
|---|---|
| <ul style="list-style-type: none"> • Package: Basic Safety (elimination of emergency braking assistant with pedestrian detection - omission of safety distance warning) • Tires: All-season tires • Seat heating for front seats | <ul style="list-style-type: none"> • Package: City Package (front and rear acoustic parking sensors - rear view camera) • Package: Comfort package (automatic climate control, light and rain sensor, keycard hands-free, electrically adjustable, heated and folding exterior mirrors, front center armrest, rear electric windows, high beam assistant) |
|---|---|

Brief expert findings

Documents submitted	At the time of the inspection, the registration certificate Part 2 (letter) was available, but the registration certificate Part 1 (certificate) was not. (Copy)
VIN comparison	The vehicle identification number (VIN) was read from the vehicle and its conformity with the submitted documents was verified during the inspection by the undersigned.
Inspection	The inspection conditions were sufficient for the assessment of the vehicle. Lifting equipment and a pit were available for examining the vehicle.
Test drive	No test drive/maneuvering was carried out during the inspection of the vehicle.
Engine function test	An engine test run was performed.

Value reducing factors



No.	Component group	Description
1	Wheel / tyres	Wheel cover - rear left side - Scratch(es) - Loss in value
2	Wheel / tyres	Wheel cover - front right side - Scratch(es) - Replace
3	Wing mirror - left side	Cap - Scratch(es) - Smart repair
4	Wheel / tyres	Pressure sensor - on - Perform diagnosis
5	Boot lid / rear door	Boot lid - Glued / labelled - De-glue / neutralise
6	Rear bumper	Rear bumper - Scratch(es) - Paint
7	Mudguard - left side	Mudguard - left side - Deformed - Repair and paint
8	Roof	Roof (Vogelkotverätzung) - Paint defect - Paint
9	Vehicle glazing	Windscreen (Im Sichtfeld) - Stone chips - Replace

Wear and tear

No.	Component group	Description
1	Bonnet	Bonnet - Stone chips - No deduction
2	Door - front right side	Door (Innen) - dent(s) - No deduction
3	Engine	Engine cowling - lower - Scratched - No deduction
4	Front bumper	Front bumper ((Polieren)) - Scratch(es) - No deduction
5	Wheel / tyres	Wheel cover - front left side - Scratch(es) - No deduction
6	Wheel / tyres	Wheel cover - rear right side - Scratch(es) - No deduction

The vehicle shows signs of wear commensurate with its age and use.

Order/Scope of order

The order was placed to prepare a sales report for the vehicle described. This includes the following:

- Description of core relevant information about the vehicle
- Documentation of equipment features
(*Delivery by third-party service providers*)
- Documentation of damage, defects, missing parts
- Documentation of previous damage, unrepaired previous damage, repainting
- a brief visual or functional inspection of the equipment details if possible.
(*Functional tests of driver assistance systems are not included in the scope of services!*)
- a photo documentation of the vehicle

Basis for the order

This product is based on the Alphabet Fuhrpark GmbH guidelines for vehicle returns and valuations. The expert makes the explicit findings in each individual case objectively within the framework of the specified standards based on his or her own expertise.

The vehicle inspection takes place in a disassembled state.

Damage or defects that can only be detected during disassembly/diagnosis work or through advanced knowledge remain within the scope of the prognosis risk. An extended risk exists for concealed defects caused by fraudulent deception and not identifiable by the expert.

Damage or defects resulting from normal use or wear and tear of the vehicle will be accepted according to the applicable standard.

There was no explicit identification or monetary consideration of the expected features within the product.

Features which in their nature and severity slightly exceed normal use but do not constitute unacceptable damage will be documented and identified under signs of use if necessary.

Damage or defects that can no longer be attributed to normal use or wear and tear according to the underlying standard are listed in the product under value-reducing factors.

Depending on the product specification, a monetary ID can be provided. If this takes place, the costs can be 100% d or pro rata depending on the vehicle's age and mileage.



Previous damages

Apparently, no repaired previous damage could be found on the vehicle.



Figure 1: Diagonal front (left)



Figure 2: Diagonal front (right)



Figure 3: Diagonal rear (left)



Figure 4: Diagonal rear (right)



Figure 5: Interior - front

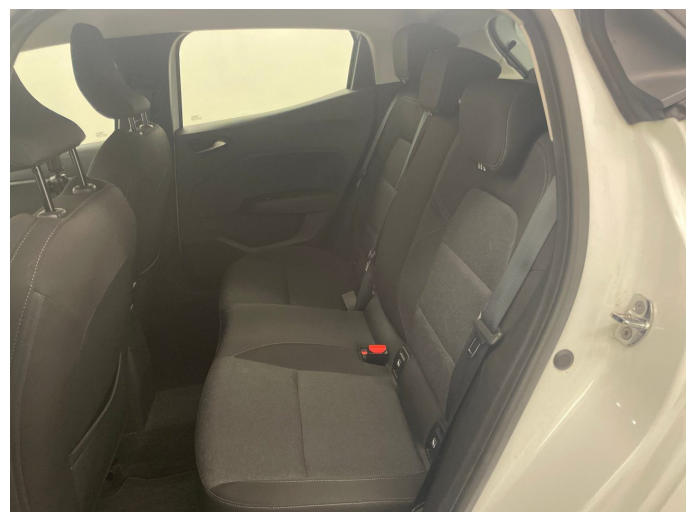


Figure 6: Interior - rear



Figure 7: Instrument cluster



Figure 8: Instrument panel



Figure 9: Interior 360° view



Figure 10: Cargo area



Figure 11: VIN



Figure 12: Mounted tyres



Figure 13: Documents



Figure 14: Documents

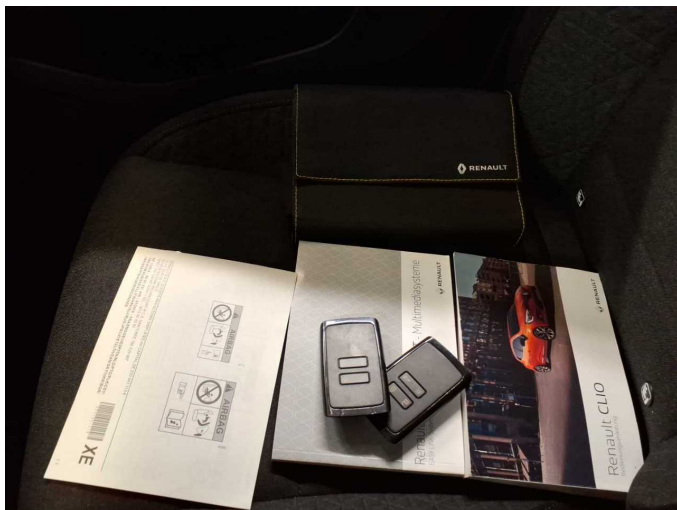


Figure 15: Documents

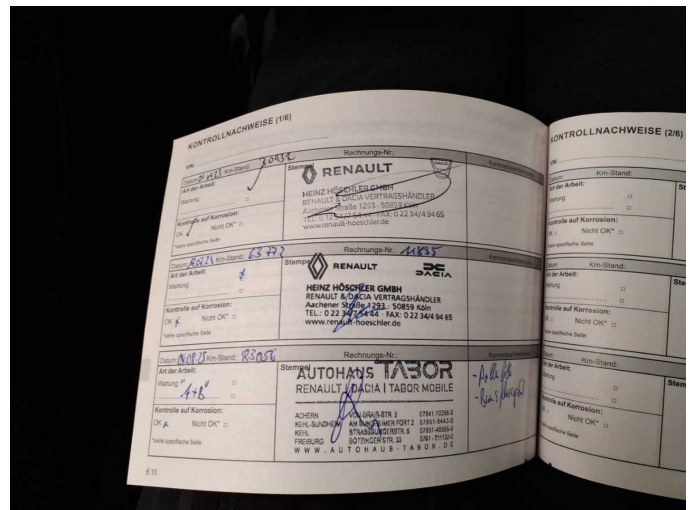


Figure 16: Documents



Figure 17: Navigation



Figure 18: Misc.



Figure 19: Misc.



Figure 20: Misc.



Figure 21: Misc.



Figure 22: Misc.



Figure 23: Misc.



Figure 24: Misc.



Damage 1: Wheel / tyres: Wheel cover - rear left side - Scratch(es) - Loss in value



Damage 1: Wheel / tyres: Wheel cover - rear left side - Scratch(es) - Loss in value



Damage 1: Wheel / tyres: Wheel cover - rear left side - Scratch(es) - Loss in value



Damage 2: Wheel / tyres: Wheel cover - front right side - Scratch(es) - Replace



Damage 2: Wheel / tyres: Wheel cover - front right side - Scratch(es) - Replace



Damage 2: Wheel / tyres: Wheel cover - front right side - Scratch(es) - Replace



Damage 2: Wheel / tyres: Wheel cover - front right side - Scratch(es) - Replace



Damage 2: Wheel / tyres: Wheel cover - front right side - Scratch(es) - Replace



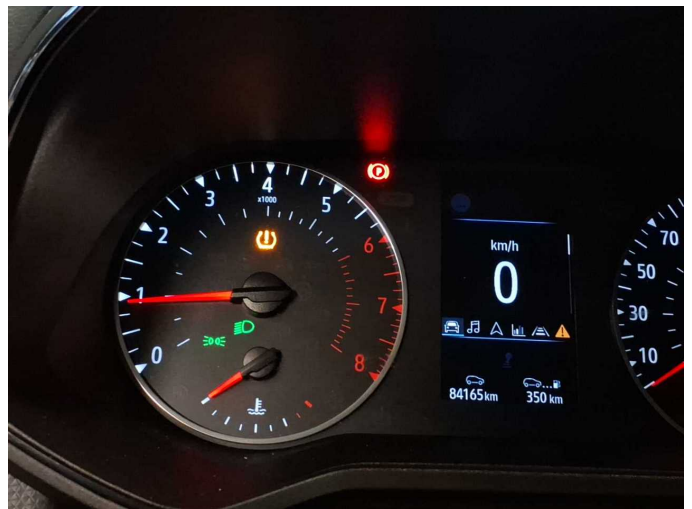
Damage 2: Wheel / tyres: Wheel cover - front right side - Scratch(es) - Replace



Damage 3: Wing mirror - left side: Cap - Scratch(es) - Smart repair



Damage 3: Wing mirror - left side: Cap - Scratch(es) - Smart repair



Damage 4: Wheel / tyres: Pressure sensor - on - Perform diagnosis



Damage 5: Boot lid / rear door: Boot lid - Glued / labelled - De-glue / neutralise



Damage 5: Boot lid / rear door: Boot lid - Glued / labelled - De-glue / neutralise



Damage 6: Rear bumper: Rear bumper - Scratch(es) - Paint



Damage 6: Rear bumper: Rear bumper - Scratch(es) - Paint



Damage 6: Rear bumper: Rear bumper - Scratch(es) - Paint



Damage 6: Rear bumper: Rear bumper - Scratch(es) - Paint



Damage 6: Rear bumper: Rear bumper - Scratch(es) - Paint



Damage 7: Mudguard - left side: Mudguard - left side - Deformed - Repair and paint



Damage 7: Mudguard - left side: Mudguard - left side - Deformed - Repair and paint



Damage 7: Mudguard - left side: Mudguard - left side - Deformed - Repair and paint



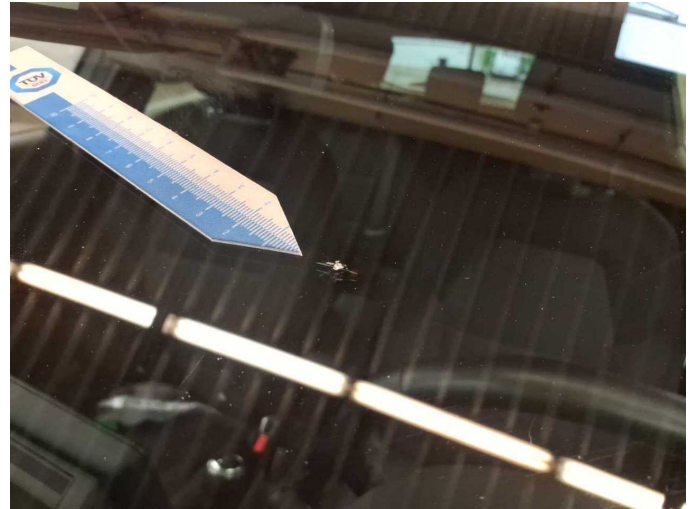
Damage 8: Roof: Roof (Vogelkotverätzung) - Paint defect - Paint



Damage 8: Roof: Roof (Vogelkotverätzung) - Paint defect - Paint



Damage 9: Vehicle glazing: Windscreen (Im Sichtfeld) - Stone chips - Replace



Damage 9: Vehicle glazing: Windscreen (Im Sichtfeld) - Stone chips - Replace



Wear and tear 6: Wheel / tyres: Wheel cover - rear right side - Scratch(es) - No deduction



Wear and tear 6: Wheel / tyres: Wheel cover - rear right side - Scratch(es) - No deduction



Wear and tear 6: Wheel / tyres: Wheel cover - rear right side - Scratch(es) - No deduction



Wear and tear 6: Wheel / tyres: Wheel cover - rear right side - Scratch(es) - No deduction



Wear and tear 6: Wheel / tyres: Wheel cover - rear right side -
Scratch(es) - No deduction



Wear and tear 6: Wheel / tyres: Wheel cover - rear right side -
Scratch(es) - No deduction



Wartungshistorie

(gemäß Auftraggeber Informationen)

Fahrgestellnummer: VF1RJA00268828232
Hersteller / Modell: RENAULT RENAULT Clio TCe 90 BUSINESS EDITION

Datum	KM-Stand	Beschreibung
04.08.2025	83.059	Bremsflüssigkeit; Bremsflüssigkeit ern; Motoröl b. Wartung; Ölfilter ern; Regelwartungsdienst; Wartung Sonstiges
19.07.2024	63.772	Bremse Sonstiges; Bremsklötze vorne; Bremsscheiben vorne; Luftfiltereinsatz ern; Motoröl b. Wartung; Ölfilter ern; Regelwartungsdienst; Wartung Sonstiges; Zündkerzen ern
30.09.2023	30.945	Motoröl b. Wartung; Ölfilter ern; Regelwartungsdienst; Wartung Sonstiges