



Expertise

Protocol number: 41595676  
Order No. / Reference: 25240834  
Inspection date: 18 Sept 2025

Manufacturer: Renault

Model: Clio TCe 90 BUSINESS EDITION

VIN: VF1RJA00068828231



Vehicle details	
Manufacturer / Type / Model / Equipment	
Renault Clio TCe 90 BUSINESS EDITION	
Vehicle Identification number	VF1RJA00068828231
Mileage (Read)	90,959 km
First registration	29 Aug 2022
Number of holders	1
Next periodical technical inspection	07/2027
(Report on hand)	
Power / Engine displacement	67 kw / 999 ccm
Fuel type / Cylinder	Petrol / 3
Gearbox / Number of gears	Manual / 6
Type of drive	Front drive
Type of vehicle	Saloon car
Colour / colour code	Arktis-Weiß
Doors / Seats	5 / 5
Upholstery type	Cloth
Colour of upholstery	Black-Anthracite
Re/Import	no
Driving readiness	Roadworthy



## Vehicle details

<b>Maintenance booklet / proof</b>	digital proof / complete	<b>Next maintenance in</b>	26,300 km
<b>Last maintenance on / at</b>	07/2025 at 87,163 km		
<b>Key is / should be</b>	2 / 2	<b>FZG documents</b>	ZB#2 (B) was available (copy), ZB#1 (S) was not available
		<b>Letter No.</b>	GN281862
<b>Previous damage / Accident</b>	Detectable	<b>Repainting</b>	None detectable
<b>Inspection conditions</b>	sufficient	<b>Lifting equipment / pit</b>	yes
<b>Test drive</b>	Not performed	<b>Engine function test</b>	Performed
<b>Driving readiness</b>	Roadworthy		
<b>Manufacturer key number/ type code number</b>	3333 / BNX 00170		
<b>Emission standard</b>	EURO6;WLTP;AP;PI/CI; M, N1 I	<b>Fine dust sticker</b>	
<b>Permitted total weight</b>	1,603 kg	<b>Empty weight</b>	

## Tyres

### Mounted tyres

#	Tyre size	Type of tyre	Manufacturer	Tread depth
1)	195/55 R16 87H	All-season tyres on Steel rim with wheel cover	Continental	6mm / 6mm
2)	195/55 R16 87H	All-season tyres on Steel rim with wheel cover	Continental	5mm / 5mm

### Replacement

Typ	Tyre size	Type of tyre	Manufacturer	Tread depth
	Tirefit	Expiration date 09/2027		

**Legend:** Tread depth information for tires on the left is in the first place, for tires on the right is in the second place on the axle in the direction of travel



## Equipment

### Standard equipment

- |   |   |
|---|---|
| <ul style="list-style-type: none"> <li>• Airbags:</li> <li>• Anti-lock braking system</li> <li>• Exterior mirrors electrically folding, adjustable and heated</li> <li>• Exterior mirror housings painted in body color</li> <li>• On-board computer</li> <li>• tachometer</li> <li>• Rear parking aid</li> <li>• Rims: Flexwheel "Amicitia" 16"</li> <li>• Transmission: Manual transmission (6-speed)</li> <li>• Rear window wiper</li> <li>• Air conditioning</li> <li>• Headrests (3) rear height adjustable</li> <li>• Steering wheel with leather-look cover</li> <li>• Navigation: EASY LINK</li> <li>• Emergency braking assistant with pedestrian detection</li> <li>• Upholstery: Cloth</li> <li>• Tire pressure monitoring system indirect</li> <li>• Power steering, electric</li> <li>• Safety distance warning</li> <li>• Front sun visors (2)</li> <li>• 12 volt socket at the front</li> <li>• Daytime running light</li> <li>• Front door handles painted in body color</li> <li>• Full-LED headlights LED PURE VISION</li> <li>• Central locking with radio remote control</li> </ul> | <ul style="list-style-type: none"> <li>• Analogue speedometer instrument with TFT display</li> <li>• Automatic locking of doors while driving (can be deactivated)</li> <li>• Hill start assist</li> <li>• brake light third</li> <li>• eCall emergency call system</li> <li>• Electronic Stability Program (ESP)</li> <li>• Electric front windows</li> <li>• Back window, heater</li> <li>• Isofix child seat anchorage system</li> <li>• Headrests (2) front</li> <li>• Paint finish: Uni</li> <li>• Light sensor</li> <li>• Fog light</li> <li>• Package: Infotainment package</li> <li>• Tires: Mobility Set</li> <li>• Rear seat backrest asymmetrically split folding (1/3, 2/3)</li> <li>• seat belts</li> <li>• Seats: Driver's seat and steering wheel height adjustable</li> <li>• Lane departure warning</li> <li>• Bumpers in body color</li> <li>• Cruise pilot</li> <li>• Traffic sign recognition</li> <li>• Immobiliser</li> </ul> |
|---|---|

### Extra equipment

- |   |   |
|---|---|
| <ul style="list-style-type: none"> <li>• Package: Basic Safety (elimination of emergency braking assistant with pedestrian detection - omission of safety distance warning)</li> <li>• Tires: All-season tires</li> <li>• Seat heating for front seats</li> </ul> | <ul style="list-style-type: none"> <li>• Package: City Package (front and rear acoustic parking sensors - rear view camera)</li> <li>• Package: Comfort package (automatic climate control, light and rain sensor, keycard hands-free, electrically adjustable, heated and folding exterior mirrors, front center armrest, rear electric windows, high beam assistant)</li> </ul> |
|---|---|

## Brief expert findings

Documents submitted	At the time of the inspection, the registration certificate Part 2 (letter) was available, but the registration certificate Part 1 (certificate) was not. (Copy)
VIN comparison	The vehicle identification number (VIN) was read from the vehicle and its conformity with the submitted documents was verified during the inspection by the undersigned.
Inspection	The inspection conditions were sufficient for the assessment of the vehicle. Lifting equipment and a pit were available for examining the vehicle.
Test drive	No test drive/maneuvering was carried out during the inspection of the vehicle.
Engine function test	An engine test run was performed.
Driving readiness	The vehicle was drivable at the time of inspection.

## Value reducing factors



No.	Component group	Description
1	Wheel / tyres	Wheel cover - front left side - Scratched - Replace
2	Bonnet	Bonnet (Seilzug ohne Funktion) - Sub-function - Diagnosed and repair if necessary

## Wear and tear

No.	Component group	Description
1	Vehicle glazing	Windscreen - Stone chips - No deduction
2	Front bumper	Front bumper - Stone chips - No deduction
3	Wheel / tyres	Wheel cover - rear left side - Scratch(es) - No deduction
4	Wheel / tyres	Wheel cover - rear right side - Scratch(es) - No deduction

The vehicle shows signs of wear commensurate with its age and use.

## Previous damages

No.	Previous damage	Extent of damage (Net)
1	Front, Side right, Provided by user / customer, from 18 Sept 2024	2.355,54 €

## Order/Scope of order

The order was placed to prepare a sales report for the vehicle described. This includes the following:

- Description of core relevant information about the vehicle
- Documentation of equipment features  
(*Delivery by third-party service providers*)
- Documentation of damage, defects, missing parts
- Documentation of previous damage, unrepaired previous damage, repainting
- a brief visual or functional inspection of the equipment details if possible.  
(*Functional tests of driver assistance systems are not included in the scope of services!*)
- a photo documentation of the vehicle

## Basis for the order

This product is based on the Alphabet Fuhrpark GmbH guidelines for vehicle returns and valuations. The expert makes the explicit findings in each individual case objectively within the framework of the specified standards based on his or her own expertise.

The vehicle inspection takes place in a disassembled state.

Damage or defects that can only be detected during disassembly/diagnosis work or through advanced knowledge remain within the scope of the prognosis risk. An extended risk exists for concealed defects caused by fraudulent deception and not identifiable by the expert.

Damage or defects resulting from normal use or wear and tear of the vehicle will be accepted according to the applicable standard.

There was no explicit identification or monetary consideration of the expected features within the product.

Features which in their nature and severity slightly exceed normal use but do not constitute unacceptable damage will be documented and identified under signs of use if necessary.

Damage or defects which, according to the underlying standard, can no longer be attributed to normal use or wear and tear are listed in the product under "Depreciating Factors".

Depending on the product specification, a monetary ID can be provided. If this takes place, the costs can be 100% d or pro rata depending on the vehicle's age and mileage.

## Previous damages

According to available information previous damages were repaired at the vehicle. Traces of repairs, which allow conclusions about the area of repair, were not recognizable during the inspection.





Figure 1: Diagonal front (left)



Figure 2: Diagonal front (right)



Figure 3: Diagonal rear (left)



Figure 4: Diagonal rear (right)



Figure 5: Interior - front



Figure 6: Interior - rear





Figure 7: Instrument cluster



Figure 8: Instrument panel



Figure 9: Interior 360° view ([Online link](#))



Figure 10: Cargo area



Figure 11: VIN



Figure 12: Mounted tyres



Figure 13: Documents

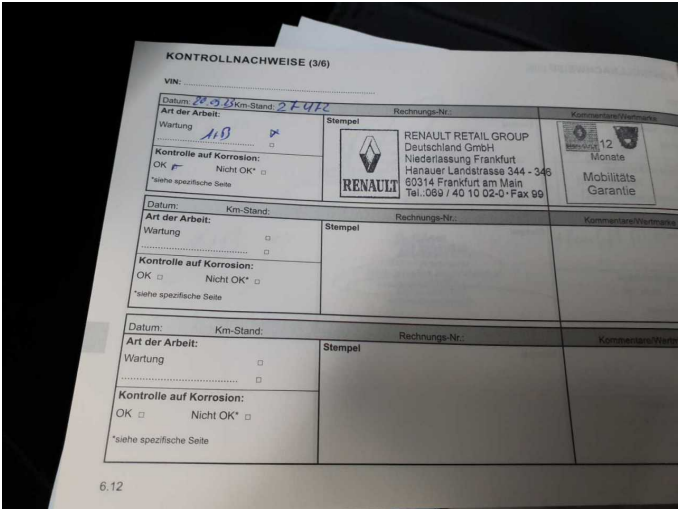


Figure 14: Documents



Figure 15: Documents

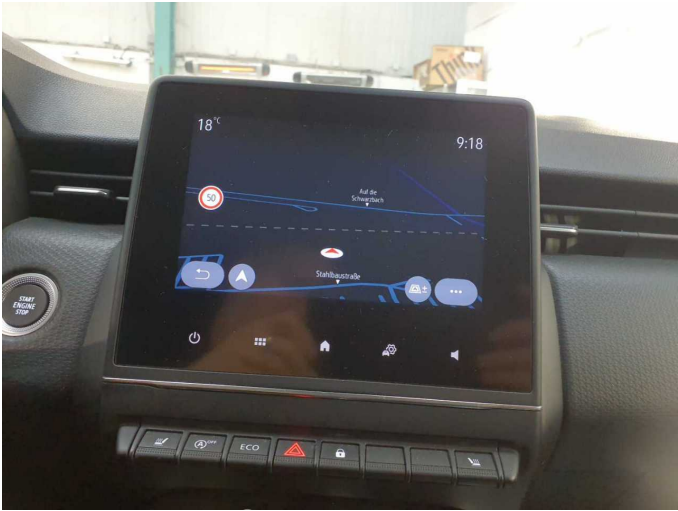


Figure 16: Navigation



Figure 17: Misc.



Figure 18: Misc.





Figure 19: Misc.



Figure 20: Misc.

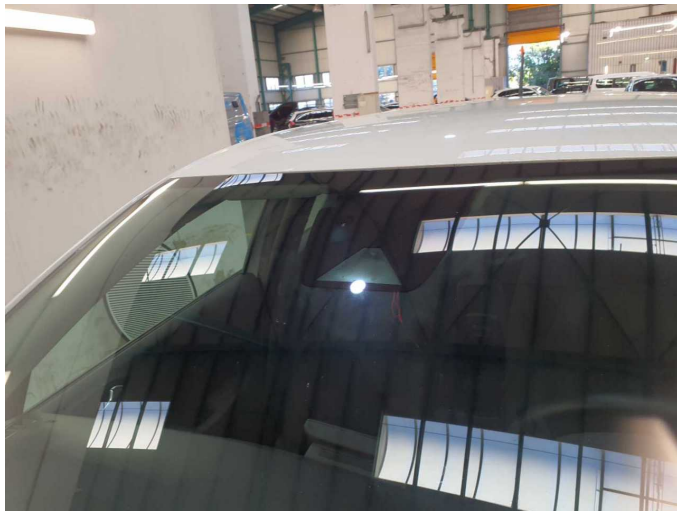


Figure 21: Misc.



Figure 22: Misc.



Figure 23: Misc.



Figure 24: Misc.

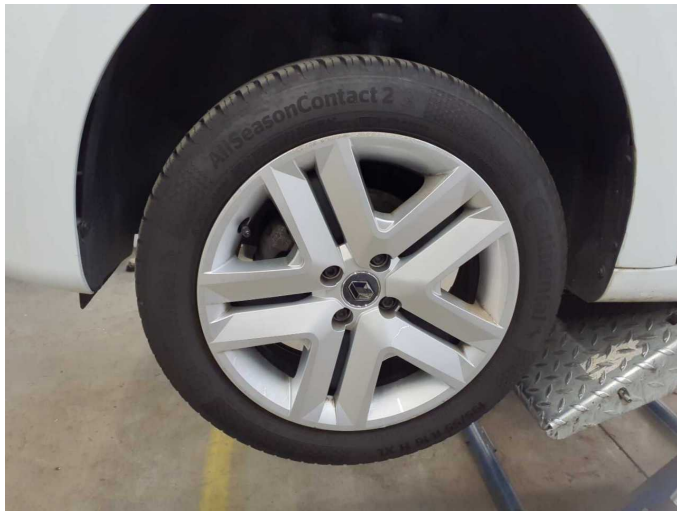




Figure 25: Misc.



Figure 26: Misc.



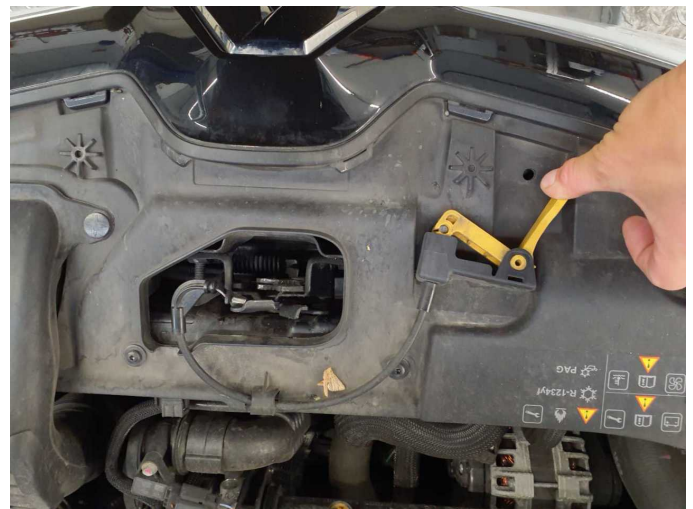
**Damage 1:** Wheel / tyres: Wheel cover - front left side - Scratched - Replace



**Damage 1:** Wheel / tyres: Wheel cover - front left side - Scratched - Replace



**Damage 2:** Bonnet: Bonnet (Seilzug ohne Funktion) - Sub-function - Diagnosed and repair if necessary



**Damage 2:** Bonnet: Bonnet (Seilzug ohne Funktion) - Sub-function - Diagnosed and repair if necessary



# Wartungshistorie

(gemäß Auftraggeber Informationen)

Fahrgestellnummer: VF1RJA00068828231  
Hersteller / Modell: RENAULT RENAULT Clio TCe 90 BUSINESS EDITION

Datum	KM-Stand	Beschreibung
22.07.2025	87.163	AU; Bremsflüssigkeit; Motoröl b. Wartung; Regelwartungsdienst
06.08.2024	59.293	Luftfiltereinsatz ern; Motoröl b. Wartung; Ölfilter ern; Regelwartungsdienst; Wartung Sonstiges; Zündkerzen ern