



RENAULT ESPACE

Espace dCi 160 Energy Twin Turbo Initiale Paris EDC

VIN NO VF1RFC00152339321
Registration Number DR354SL



MOT Date	Number of Owners	Number of Keys	Odometer Reading
-	-	2	146669 km
Last Service	Last Service Mileage	First Registration Date	Country First Registered
-	-	2015-05-22	-

Inspection Report Summary

Customer	BCA Auto Encheres	Report Number	P20251008135149
Inspection Date / Place	2025-10-08 / BCA MONTMARTIN	Cosmetic Grade	2

Vehicle Summary

Vehicle Condition	Non-Runner	VAT Type	Exempt Rate
Fuel Type	Diesel	Gearbox Type	Automatic
Colour	Light Grey	Engine Size (cc)	1598
Engine Size	1.6	No of Doors	5
Body Type	Sedan	Drive Train	Front
Seat Colour		No of Seats	5
Charging Cables		NEDC CO2 Rating (q/km)	120
Engine Rating CV		Metalic Colour	Yes
Accident Damage	No	Euro Emission	

Vehicle History & Documents

Service Book Available	Present	Next Service Mileage	km
Previous Usage	Normal Use	Imported	No
Manufacturer Warrenty			





Equipment

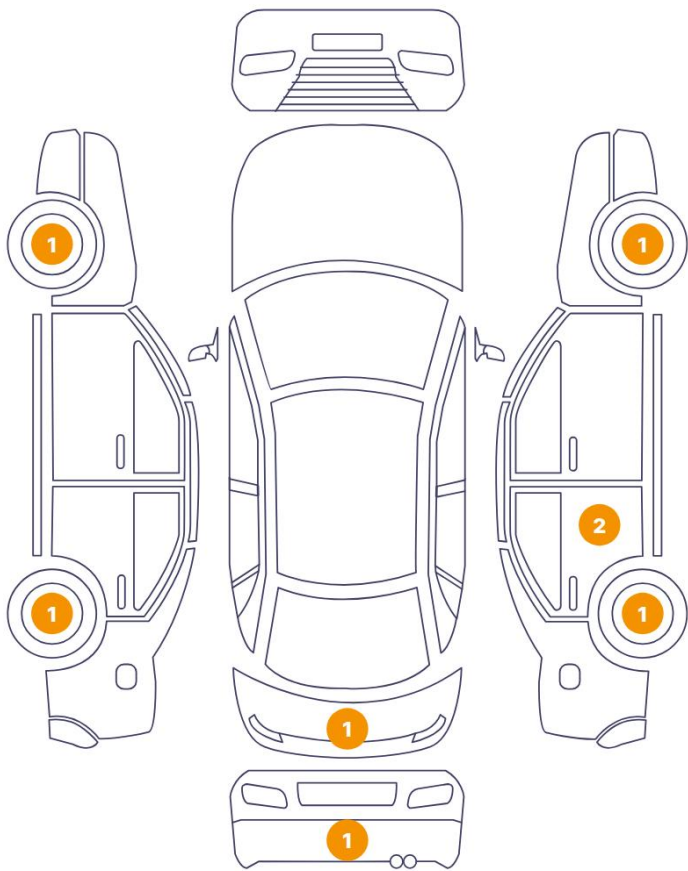
Central locking	Electrically folding wing mirrors	Rear parking sensors	Electric Tailgate
Cruise control	Front parking sensors	Electrically adjustable seats	Radio
Alloys wheels	Stability control	Front fog lamps	Power assisted steering

Equipment Details

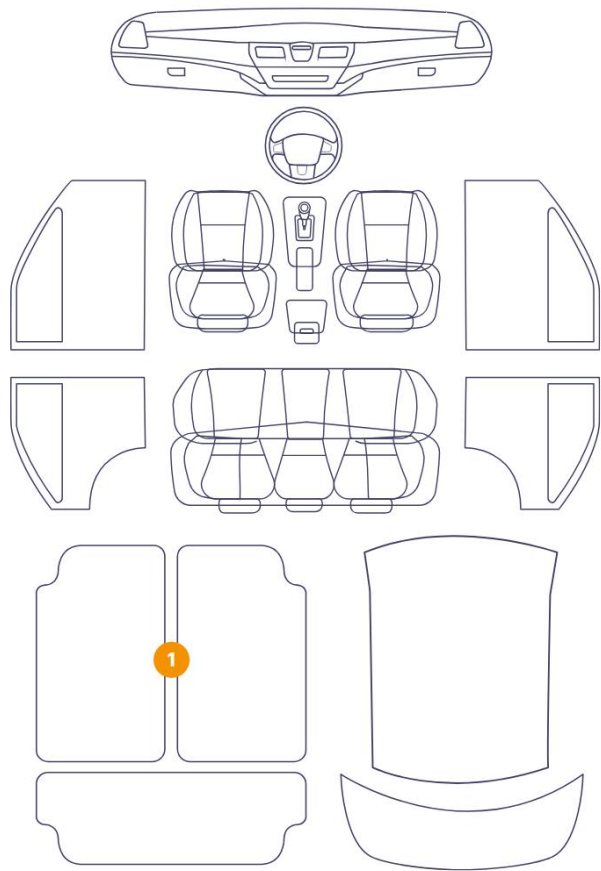
Seat Heating	Front	Air Conditioning	Yes
Sunroof Type	Tilt/Slide Glass		

Cosmetic Damage

8 Dommages



1 Dommages



Component	Damage	Comments
1 Floor Carpet	Interior / Dirty	
2 Rim / Back Left	Out of Bodywork / Scratch	
3 Rim / Back Right	Out of Bodywork / Scratch	
4 Rim / Front Left	Out of Bodywork / Scratch	
5 Rim / Front Right	Out of Bodywork / Scratch	
6 Door / Back Right	Paint / Scratch / Line	
7 Corner Bumper / Back Right	Paint / Scratch / Scuff	
8 Door / Back Right	Paint / Scratch / Line	
9 Tailgate	Bodywork / Dent / Dent	



1. Floor Carpet
Interior / Dirty -



2. Rim / Back Left
Out of Bodywork / Scratch -



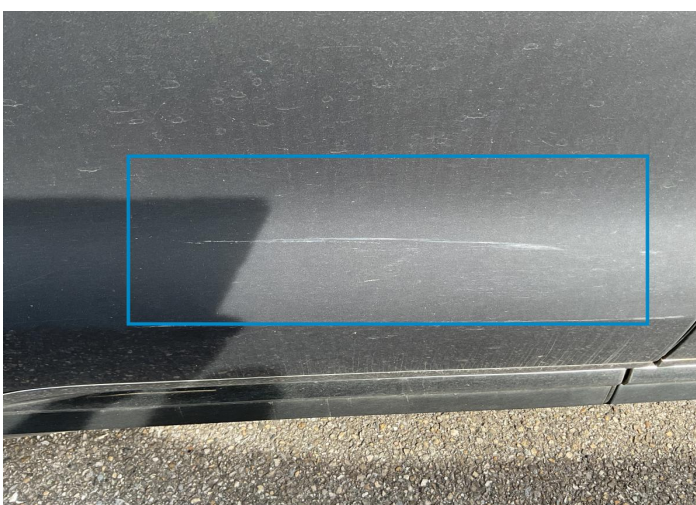
3. Rim / Back Right
Out of Bodywork / Scratch -



4. Rim / Front Left
Out of Bodywork / Scratch -



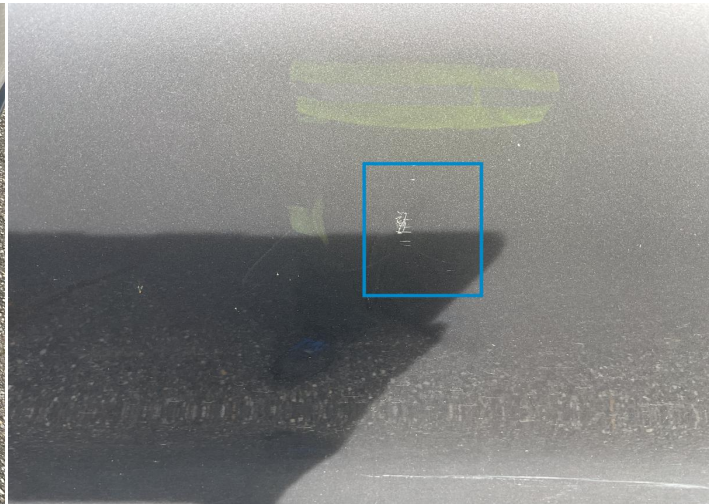
5. Rim / Front Right
Out of Bodywork / Scratch -



6. Door / Back Right
Paint / Scratch / Line -



7. Corner Bumper / Back Right
Paint / Scratch / Scuff -



8. Door / Back Right
Paint / Scratch / Line -



9. Tailgate
Bodywork / Dent / Dent -

Mechanical Condition

Tyres

Presence Anti-Theft Lock Nut 

 *No troubles detected, good condition or correct tests, according to vehicle age and mileage*

 *Damages or malfunction detected that requires repairs by the buyer*

 *Not applicable*

 *Not tested*

Disclaimer Section

The test drive is done on a flat surface and lasts about 2 minutes. The driven distance is a minimum of 300 meters, including a u-turn, an acceleration and a braking phase. The highest speed achieved during this test is 50km/h. The mechanical check is a visual and dynamic diagnosis without any disassembly. We cannot guarantee any mechanical wear part.