



RENAULT TRAFIC (30)
TRAFIC FGN L2H1 3T BLUE DCI 130 GSR2
EXTRA

VIN NO VF1FL000574965181
Registration Number HD902WS



MOT Date	Number of Owners	Number of Keys	Odometer Reading
-	-	1	10834 km
Last Service	Last Service Mileage	First Registration Date	Country First Registered
-	-	2025-02-06	France

Inspection Report Summary

Customer	BCAuto Encheres	Report Number	P20251006160926
Inspection Date / Place	2025-10-06 / BCA BETHUNE	Cosmetic Grade	3

Vehicle Summary

Vehicle Condition	Not Movable	VAT Type	Qualified - Normal Rate
Fuel Type	Diesel	Gearbox Type	Manual
Colour	White	Engine Size (cc)	1997
Engine Size	2.0	No of Doors	4
Body Type	Box Wagon	Drive Train	Front
Seat Colour		No of Seats	3
Charging Cables		WLTP CO2 Emissions	
Metalic Colour	Blanc Glacier opaque	Electric Consumption	
Accident Damage	Yes	Euro Emission	

Vehicle History & Documents

Service Book Available	-	Next Service Mileage	km
Previous Usage	Normal Use	Imported	
Manufacturer Warrenty			



Equipment

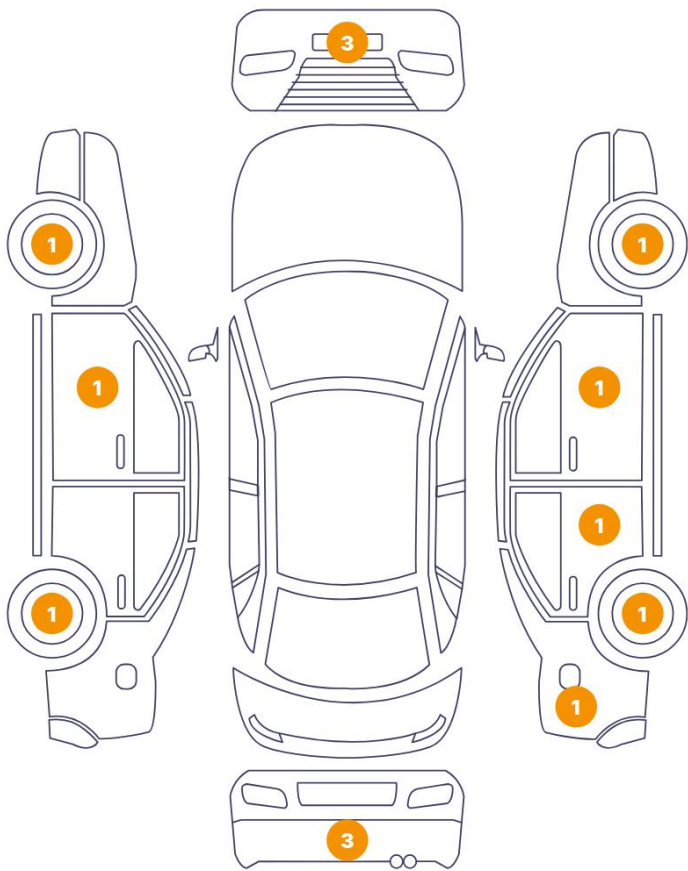
Central locking	Radio	Cruise control	Front parking sensors
Satellite navigation	Electrically folding wing mirrors	Rear parking sensors	Front fog lamps
Power assisted steering			

Equipment Details

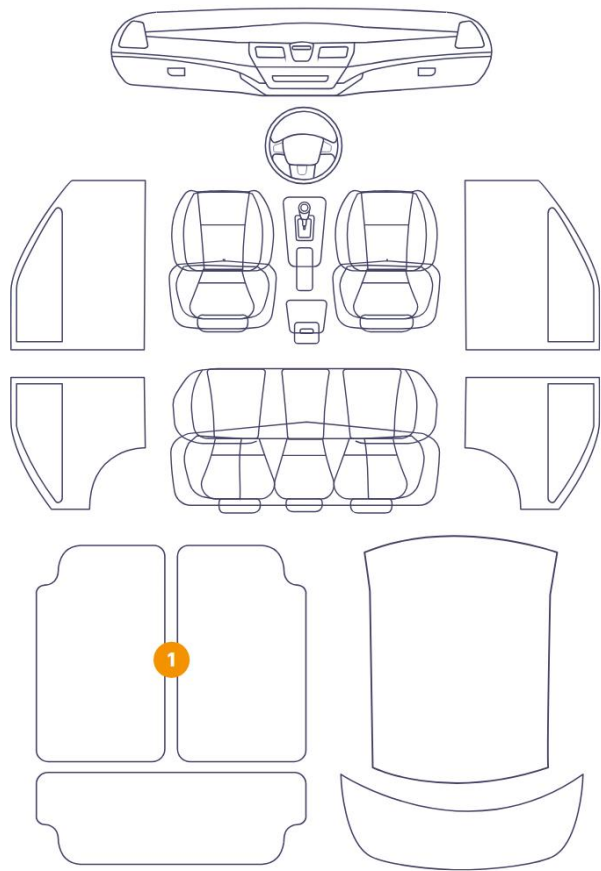
Seat Heating	No	Air Conditioning	Yes
Sunroof Type	Tilt/Slide Steel		

Cosmetic Damage

14 Dommages



1 Dommages



Component		Damage	Comments
1	Floor Carpet	Interior / Dirty	
2	Corner Bumper / Front Right	Paint / Scratch / Scuff	
3	Bumper / Front	Paint / Scratch / Scuff	
4	Corner Bumper / Front Left	Paint / Scratch / Scuff	
5	Rim / Front Left	Out of Bodywork / Scratch	
6	Mirror / Front Left	Paint / Scratch / Scuff	
7	Rim / Back Left	Out of Bodywork / Scratch	
8	Corner Bumper / Back Left	Paint / Scratch / Scuff	
9	Bumper / Back	Paint / Scratch / Scuff	
10	Corner Bumper / Back Right	Paint / Scratch / Scuff	
11	Rim / Back Right	Out of Bodywork / Scratch	
12	Side Panel / Back Right	Bodywork / Dent / Deformation	

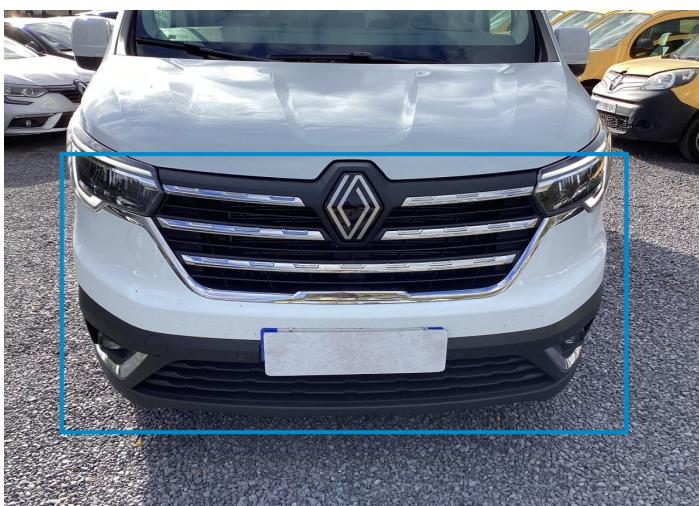
13	Door / Back Right	Bodywork / Dent / Deformation
14	Mirror / Front Right	Paint / Scratch / Scuff
15	Rim / Front Right	Out of Bodywork / Scratch



1. Floor Carpet
Interior / Dirty -



2. Corner Bumper / Front Right
Paint / Scratch / Scuff -



3. Bumper / Front
Paint / Scratch / Scuff -



4. Corner Bumper / Front Left
Paint / Scratch / Scuff -



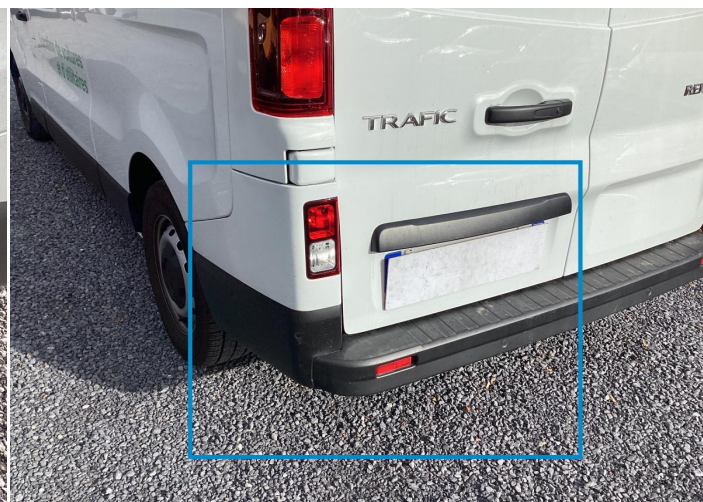
5. Rim / Front Left
Out of Bodywork / Scratch -



6. Mirror / Front Left
Paint / Scratch / Scuff -



7. Rim / Back Left
Out of Bodywork / Scratch -



8. Corner Bumper / Back Left
Paint / Scratch / Scuff -



9. Bumper / Back
Paint / Scratch / Scuff -



10. Corner Bumper / Back Right
Paint / Scratch / Scuff -



11. Rim / Back Right
Out of Bodywork / Scratch -



12. Side Panel / Back Right
Bodywork / Dent / Deformation -



13. Door / Back Right
Bodywork / Dent / Deformation -



14. Mirror / Front Right
Paint / Scratch / Scuff -



15. Rim / Front Right
Out of Bodywork / Scratch -

Mechanical Condition

Tyres

Presence Anti-Theft Lock Nut 

 *No troubles detected, good condition or correct tests, according to vehicle age and mileage*

 *Damages or malfunction detected that requires repairs by the buyer*

 *Not applicable*

 *Not tested*

Disclaimer Section

The test drive is done on a flat surface and lasts about 2 minutes. The driven distance is a minimum of 300 meters, including a u-turn, an acceleration and a braking phase. The highest speed achieved during this test is 50km/h. The mechanical check is a visual and dynamic diagnosis without any disassembly. We cannot guarantee any mechanical wear part.