



RENAULT Clio

Clio 1.2 16V 75

VIN NO VF1BR1S0H44842754

Registration Number 0H44842754



MOT Date



Last Service



Number of Owners



Last Service Mileage



Number of Keys



First Registration Date



Odometer Reading



Country First Registered



Inspection Report Summary

Customer	BCA Online	Report Number	P20250930114931
Inspection Date / Place	2025-09-30 / BCA Berlin	Cosmetic Grade	4

Vehicle Summary

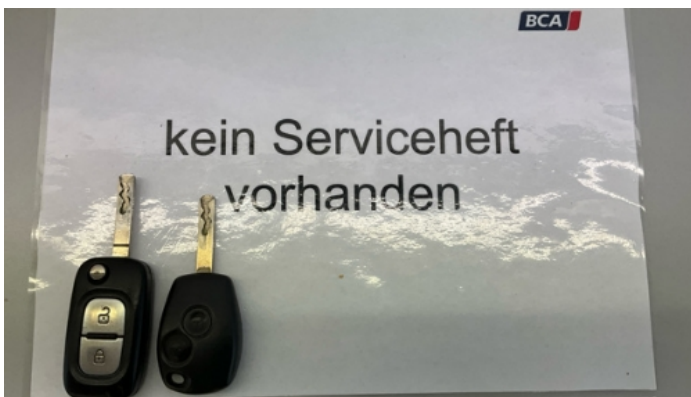
Vehicle Condition	Runner	VAT Type	Margin
Fuel Type	Petrol	Road Worthy	Unknown
Colour	Grey	Engine Size (cc)	1149
Engine Size	1.1	No of Doors	5
Body Type	Sedan	Drive Train	Front
Seat Colour		No of Seats	5
Seat Covering Name		Seat Covering	Cloth
Charging Cables		NEDC CO2 Rating (q/km)	135
Gearbox Type	Manual		

Vehicle History & Documents

Service Book Available	Missing	Next Service Mileage	km
Previous Usage		Imported	No
Manufacturer Warranty			







Equipment

Trip Computer	Alloys wheels	Front fog lamps	Remote central locking
CD Player	Radio	Airbag Status	Anti-lock braking
Remote adjusting wing mirrors	Stability control	Central locking	Rear parking sensors

Equipment Details

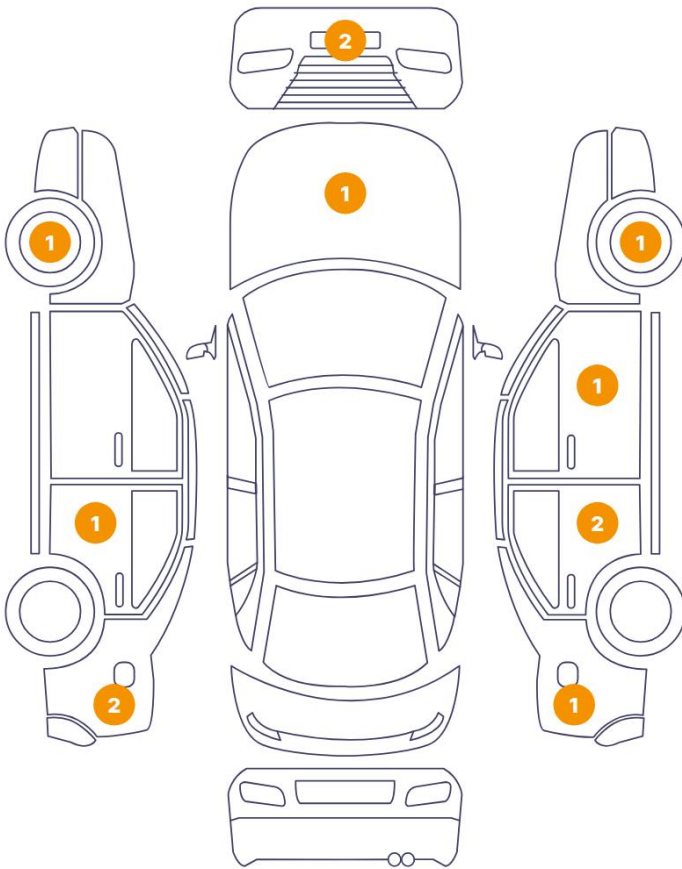
Air Conditioning	Yes	Alloy Wheel Size	15
------------------	-----	------------------	----

Wheels & Tyres

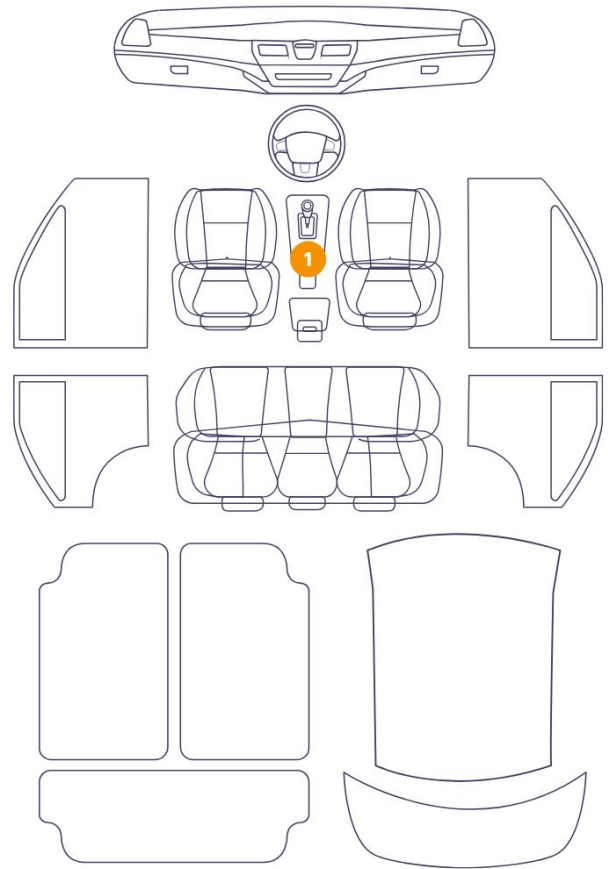
Right Front Tyre Depth	7	Left Front Tyre Depth	7
Right Rear Tyre Depth	4	Left Rear Tyre Depth	4

Cosmetic Damage

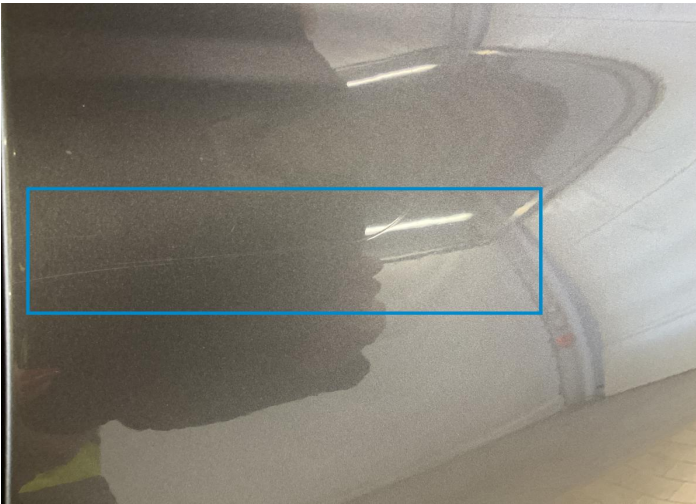
12 Schäden



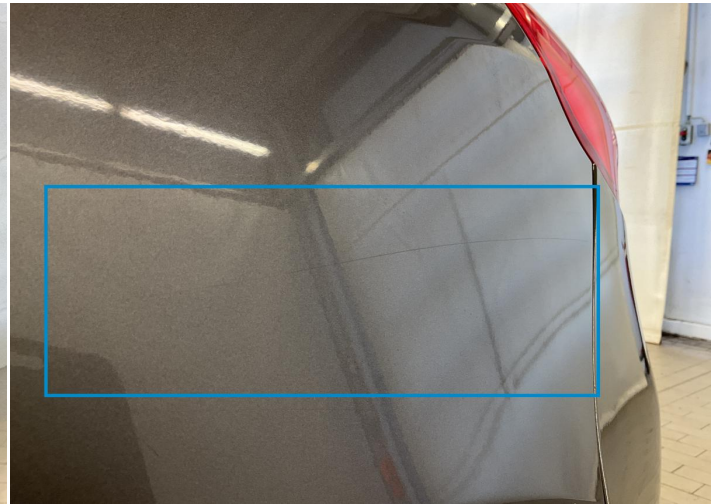
1 Schäden



Component	Damage	Comments
1 Side Panel / Back Left	Paint / Scratch / Scuff	
2 Side Panel / Back Left	Paint / Scratch / Scuff	
3 Door / Back Left	Paint / Scratch / Scuff	
4 Door / Back Right	Bodywork / Dent / Dent	
5 Door / Back Right	Paint / Chipping	
6 Side Panel / Back Right	Paint / Scratch / Scuff	
7 Door / Front Right	Paint / Scratch / Scuff	
8 Rim / Front Right	Out of Bodywork / Scratch	
9 Hood	Paint / Scratch / Scuff	
10 Bumper / Front	Paint / Chipping	
11 Bumper / Front	Paint / Chipping	
12 Rim / Front Left	Out of Bodywork / Scratch	



1. Side Panel / Back Left
Paint / Scratch / Scuff -



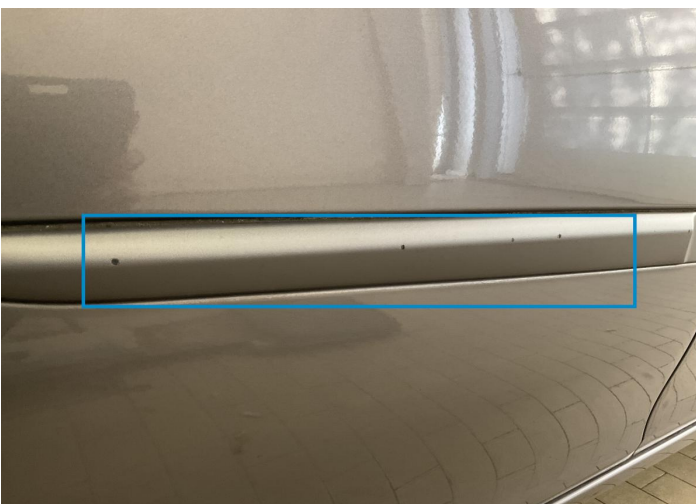
2. Side Panel / Back Left
Paint / Scratch / Scuff -



3. Door / Back Left
Paint / Scratch / Scuff -



4. Door / Back Right
Bodywork / Dent / Dent -



5. Door / Back Right
Paint / Chipping -



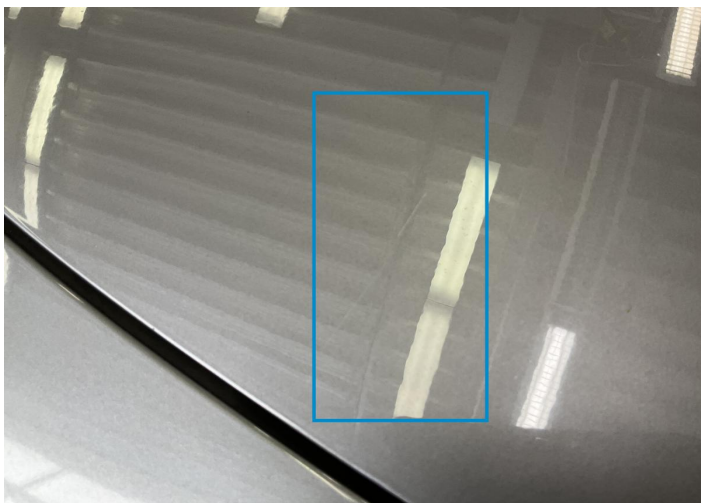
6. Side Panel / Back Right
Paint / Scratch / Scuff -



7. Door / Front Right
Paint / Scratch / Scuff -



8. Rim / Front Right
Out of Bodywork / Scratch -



9. Hood
Paint / Scratch / Scuff -



10. Bumper / Front
Paint / Chipping -



11. Bumper / Front
Paint / Chipping -



12. Rim / Front Left
Out of Bodywork / Scratch -




13. Gear Knob
Interior / Worn - out -

Mechanical Condition

Engine			
Engine Starts	✓	Engine Status / EML	✓
Engine Leak Visible	✓		
Control Lights			
ABS Warning Light	✓	ESP Fault/Traction Control Malfunction Light	✓
Airbag Warning Light	✓	Oil Pressure Warning Light	✓
Brake Warning Light	✓	Power Steering Warning Light	✓
Alternator / Battery	✓	No Dashboard Lights	✓
Display Defect	✓	Tire Pressure Monitoring System	✓
Service Light	✓		
Gearbox			
Gear Box	✓		
Equipments Test			
AC / Heating System	✓	Other Equipments	✓
Central Locking	✓	Main & Spare Keys Functioning	✓
Electric Windows	✓	Audio Equipment	✓
Parking Sensors / Cameras Functioning	✓		
Levels			
Brakes Fluid	✓	Coolant Fluid	✓

Test Drive Inspection

Steering Wheel


Steering | Noise / Anomaly 

Engine


Engine Noise  The Gears Scratch / Skip / Abnormal Operation 

Fume Quantity  Power Loss 


Brake

Brake System Anomaly 

Clutch

Clutch Functioning 


General

Test Driven Status 

 **No troubles detected, good condition or correct tests, according to vehicle age and mileage**

 **Damages or malfunction detected that requires repairs by the buyer**

 **Not applicable**

 **Not tested**

Disclaimer

Please also note the "UserGuide condition report", which shows the scope of the vehicle description.

[User Guide](#)