



Expertise

Protocol number: 37910049
Order No. / Reference: 24265215
Inspection date: 14 Jan 2025

Manufacturer: Renault

Model: Twingo E-TECH 100% el. EQUILIB

VIN: VF1AH000170208653



Vehicle details	
Manufacturer / Type / Model / Equipment	
Renault Twingo E-TECH 100% el. EQUILIB	
Vehicle Identification number	VF1AH000170208653
Mileage (Read)	10,230 km
First registration	15 Dec 2022
Number of holders	1
Power / Engine displacement	31 kw / 0 ccm
Fuel type / Cylinder	Electric / 0
Gearbox / Number of gears	direct drive / 1
Type of drive	Rear drive
Type of vehicle	Saloon car
Colour / colour code	Pyrénées-Weiß
Doors / Seats	5 / 4
Upholstery type	Cloth
Colour of upholstery	Black
Re/Import	no
Vehicle with smoke odor	no
driving readiness	Roadworthy



Vehicle details

Maintenance booklet / proof	Non-existent	Next maintenance in	30,000 km
Key is / should be	2 / 2	FZG documents	ZB#2 (B) was available (copy), ZB#1 (S) was not available
		LetterNo	GQ454507
Previous damage / Accident	None detectable	Repainting	None detectable
Inspection conditions	Sufficient	lifting equipment / pit	yes
Test drive	Not performed	Engine function test	Performed
driving readiness	Roadworthy		
Manufacturer key number/ type code number	3333 / BNZ 00020		
Emission standard	2017/1151;WLTP;reine Elektrofz	fine dust sticker	
Permitted total weight	1,518 kg	Empty weight	

Tyres

Mounted tyres

#	Tyre size	Type of tyre	Manufacturer	Tread depth
1)	165/65 R15 81T	Winter tyres on Steel rim with wheel cover	Semperit	5mm / 5mm
2)	185/60 R15 81T	Winter tyres on Steel rim with wheel cover	Semperit	5mm / 5mm

Legend: Tread depth indication for left-hand tires in first place, for right-hand tires in second place on the axle in the direction of travel



Equipment

Standard equipment

- Airbag: Airbag for driver and front passenger Passenger airbag can be switched off
- alarm system preparation
- Exterior mirrors (2) electrically adjustable and heated
- On-board computer
- Third brake light
- Electronic Stability Program (ESP) with traction control (ASR)
- Rims: Steel 15" with wheel cover "Vegas" polished with black with tires 165/65 R15 front and 185/60 R15 rear:
- electric front window lifter
- Flexicase: Open storage compartment between the front seats including USB port
- Noise simulator ZE Voice, speed dependent
- Transmission: Automatic reduction gear
- Rear window wiper
- ISOFIX/i-Size child seat attachments on the rear outer seats
- Headrests (2) integrated in the front
- Charging cable: Charging cable Type 2/Type 2 (Mode 3) with a length of 5.6 m for connection to a wallbox or charging station with a Type 2 plug.
- Package: Interior look package design "Golfball" (white) - instrument surround, air vents and steering wheel spokes in design "Golfball" in - white
- Side protection strips in black
- Seats: Driver seat height adjustable
- Start-stop system
- Exterior door handles in body color
- central locking with radio remote control
- Airbag: Side airbags with head and thorax protection at the front
- anti-lock braking system and brake assist
- exterior mirror housings in contrasting colors
- Connected Services
- Easy-Link - 7-inch touchscreen infotainment system with - DAB+ digital radio - 4 speakers - Smartphone integration via Android Auto and Apple CarPlay - FM and AM radio - Bluetooth hands-free system - AUX and USB connection, audio streaming - Voice control - Access to useful apps that make driving even more enjoyable - Control satellite on the steering wheel
- Flexicases: Closed glove compartment
- Speed limiter
- Back window, heater
- rear spoiler in black
- Automatic air conditioning
- headrests (2) rear
- Finish: Uni
- LED daytime running lights
- steering wheel height adjustable
- light and rain sensor
- Upholstery: "Eclipse" fabric in black with white accents
- Tires: Mobility set - 12V compressor - Tire sealant
- tire pressure monitoring system (TPMS)
- power steering, electric
- Seats: Rear seat backrest split folding
- Striping without
- electronic immobilizer

Brief expert findings

Documents submitted	At the time of the inspection, the registration certificate part 2 (letter) was available, but the registration certificate part 1 (certificate) was not available. (Copy)
VIN comparison	The vehicle identification number (VIN) was read and its conformity with the documents submitted was verified during the inspection by the undersigned.
Inspection	The inspection conditions were sufficient to assess the vehicle. The inspection was carried out using the lighting conditions provided by the photo system included in the report. Lifting equipment and a pit were available to examine the vehicle.
Test drive	No test drive/maneuvering was carried out during the inspection of the vehicle.
Engine function test	An engine test run was performed.
driving readiness	At the time of the inspection, the vehicle was capable of driving and moving under its own power.

Value reducing factors

No.	Component group	Description
1	Wheel / tyres	Tyres - complete set (Winter statt Sommer) - Differs from the original configuration - No deduction

Missing parts



Description

Trim / covers - Floor mats

order/scope of the order

The order was placed to prepare a sales report on the vehicle described. This includes the following:

- Description of core relevant information about the vehicle
- Documentation of equipment features
(*delivery by third-party service providers*)
- Documentation of damage, defects, missing parts
- Documentation of previous damage, unrepaired previous damage, repainting
- a brief visual or functional inspection of the equipment details if possible.
(*Functional tests of driver assistance systems are not included in the scope of services!*)
- a photo documentation of the vehicle

Basis for the order

The basis of this product is the guideline for vehicle returns and assessments of Alphabet Fuhrpark GmbH. The expert makes the explicit findings in individual cases objectively within the framework of the specified standards based on his own expertise.

The vehicle inspection takes place in a non-disassembled condition.

Damage or defects that can only be identified during disassembly/diagnosis work or through advanced knowledge remain within the scope of the prognosis risk. An increased risk exists due to concealed defects that were caused by fraudulent deception and were not identifiable by the expert.

Damage or defects resulting from normal use or wear and tear of the vehicle will be accepted according to the applicable standard.

There was no explicit identification or monetary consideration of the expected features within the product.

Features which in their nature and severity slightly exceed normal use but do not constitute unacceptable damage will be documented and identified under signs of use if necessary.

Damage or defects which, according to the underlying standard, can no longer be attributed to normal use or wear and tear, are listed in the product under value-reducing factors.

Depending on the product specification, a monetary ID can be provided. If this takes place, the costs can be 100% d or pro rata depending on the vehicle's age and mileage.

Previous damages

Neither repaired nor non-repaired previous damage to the vehicle could be determined.



Figure 1: Diagonal front (left)



Figure 2: Diagonal front (right)



Figure 3: Diagonal rear (left)



Figure 4: Diagonal rear (right)



Figure 5: Interior - front



Figure 6: Interior - rear



Figure 7: Instrument cluster



Figure 8: Instrument panel



Figure 9: Interior 360° view ([Online Link](#))



Figure 10: Cargo area



Figure 11: VIN



Figure 12: Mounted tyres



Figure 13: Documents



Figure 14: Documents



Figure 15: Documents



Figure 16: Misc.



Figure 17: Misc.



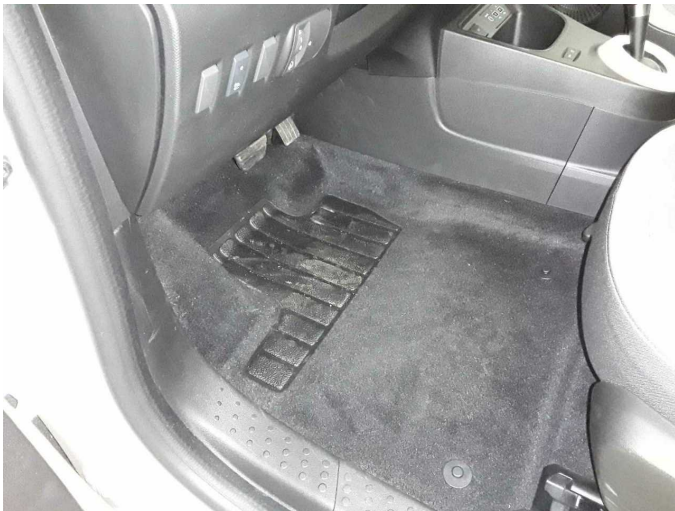
Damage 1: Wheel / tyres: Tyres - complete set (Winter statt Sommer) - Differs from the original configuration - No deduction



Damage 1: Wheel / tyres: Tyres - complete set (Winter statt Sommer) - Differs from the original configuration - No deduction



Missing part 1: Trim / covers: Floor mats - Missing - Replace



Missing part 1: Trim / covers: Floor mats - Missing - Replace



Missing part 1: Trim / covers: Floor mats - Missing - Replace