



RENAULT CLIO

Clio IV 1.2 16V 75 Zen

VIN NO VF15RSN0A54338236

Registration Number DY370MB



MOT Date



Last Service



Number of Owners



Last Service Mileage



Number of Keys



First Registration Date



2015-12-28

Odometer Reading



41252 km

Country First Registered



France

Inspection Report Summary

Customer	BCAuto Encheres	Report Number	P20250627180207
Inspection Date / Place	2025-06-27 / BCA BETHUNE	Cosmetic Grade	3

Vehicle Summary

Vehicle Condition	Non-Runner	VAT Type	Exempt Rate
Fuel Type	Petrol	Gearbox Type	Manual
Colour	Grey	Engine Size (cc)	1149
Engine Size	1.1	No of Doors	5
Body Type	Hatchback	Drive Train	Front
Seat Colour		No of Seats	5
Seat Covering Name		Seat Covering	Cloth
Charging Cables		NEDC CO2 Rating (q/km)	127

Vehicle History & Documents

Service Book Available	Missing	Next Service Mileage	km
Previous Usage	Normal Use	Imported	
Manufacturer Warrenty			



Equipment

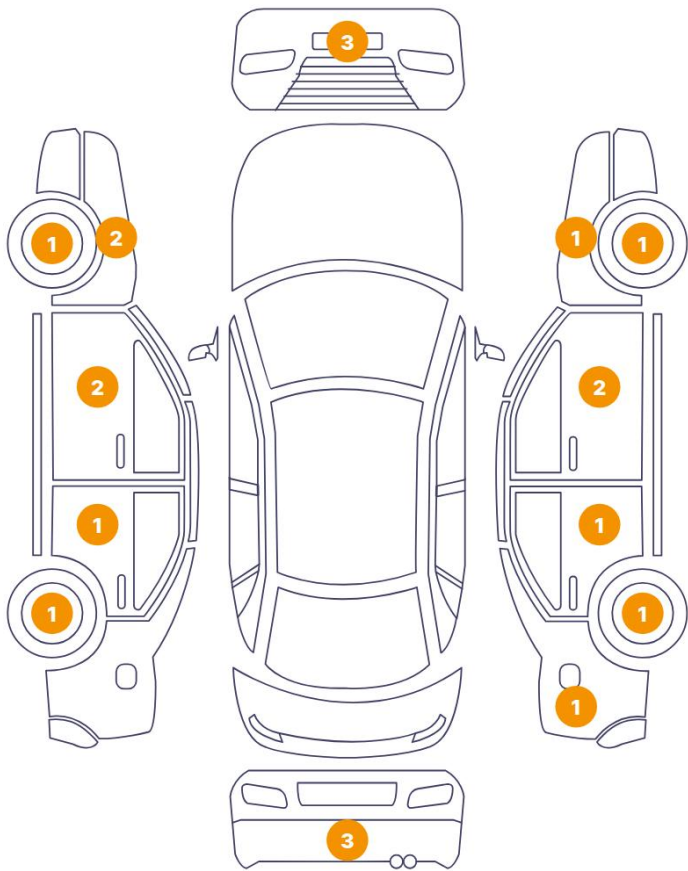
Central locking	Power assisted steering	Cruise control
-----------------	-------------------------	----------------

Equipment Details

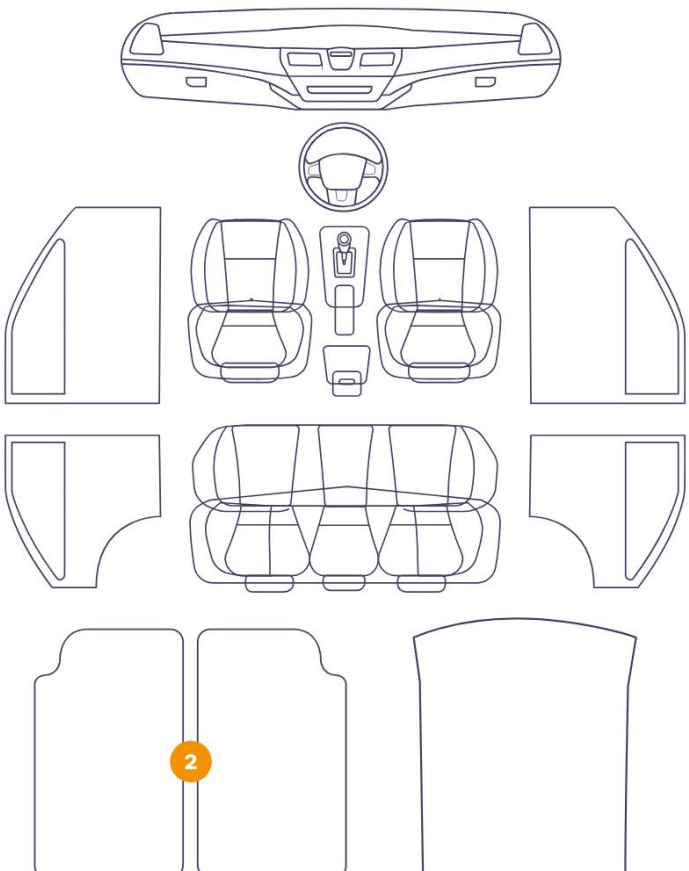
Seat Heating	No	Air Conditioning	No
Sunroof Type	Tilt/Slide Steel		

Cosmetic Damage

20 Dommages



2 Dommages



Component		Damage	Comments
1	Floor Carpet	Interior / Dirty	
2	Floor Carpet	Interior / Dirty	
3	Corner Bumper / Front Right	Paint / Scratch / Scuff	
4	Bumper / Front	Paint / Scratch / Scuff	
5	Corner Bumper / Front Left	Paint / Scratch / Scuff	
6	Fender / Front Left	Paint / Scratch / Scuff	
7	Fender / Front Left	Paint / Scratch / Line	
8	Rim / Front Left	Out of Bodywork / Scratch	
9	Mirror / Front Left	Paint / Scratch / Line	
10	Door / Front Left	Bodywork / Dent / Deformation	
11	Door / Back Left	Paint / Scratch / Line	
12	Rim / Back Left	Out of Bodywork / Scratch	
13	Corner Bumper / Back Left	Paint / Scratch / Scuff	

14	Bumper / Back	Paint / Scratch / Scuff
15	Corner Bumper / Back Right	Paint / Scratch / Scuff
16	Rim / Back Right	Out of Bodywork / Scratch
17	Door / Back Right	Paint / Scratch / Scuff
18	Door / Front Right	Paint / Scratch / Line
19	Mirror / Front Right	Paint / Scratch / Scuff
20	Fender / Front Right	Paint / Scratch / Line
21	Fender / Back Right	Paint / Scratch / Scuff
22	Rim / Front Right	Out of Bodywork / Scratch



1. Floor Carpet
Interior / Dirty -



2. Floor Carpet
Interior / Dirty -



3. Corner Bumper / Front Right
Paint / Scratch / Scuff -



4. Bumper / Front
Paint / Scratch / Scuff -



5. Corner Bumper / Front Left
Paint / Scratch / Scuff -



6. Fender / Front Left
Paint / Scratch / Scuff -



7. Fender / Front Left
Paint / Scratch / Line -



8. Rim / Front Left
Out of Bodywork / Scratch -



9. Mirror / Front Left
Paint / Scratch / Line -



10. Door / Front Left
Bodywork / Dent / Deformation -



11. Door / Back Left
Paint / Scratch / Line -



12. Rim / Back Left
Out of Bodywork / Scratch -



13. Corner Bumper / Back Left
Paint / Scratch / Scuff -



14. Bumper / Back
Paint / Scratch / Scuff -



15. Corner Bumper / Back Right
Paint / Scratch / Scuff -



16. Rim / Back Right
Out of Bodywork / Scratch -



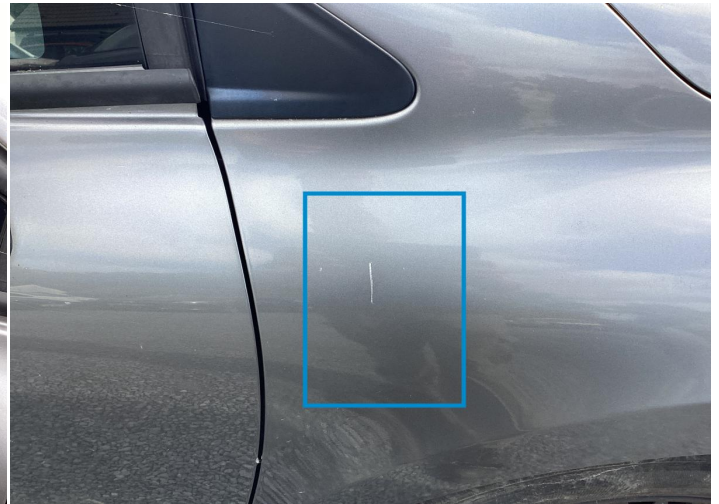
17. Door / Back Right
Paint / Scratch / Scuff -



18. Door / Front Right
Paint / Scratch / Line -



19. Mirror / Front Right
Paint / Scratch / Scuff -



20. Fender / Front Right
Paint / Scratch / Line -



21. Fender / Back Right
Paint / Scratch / Scuff -



22. Rim / Front Right
Out of Bodywork / Scratch -

Mechanical Condition


Tyres

Presence Anti-Theft Lock Nut 

 *No troubles detected, good condition or correct tests, according to vehicle age and mileage*

 *Damages or malfunction detected that requires repairs by the buyer*

 *Not applicable*

 *Not tested*

Disclaimer Section

The test drive is done on a flat surface and lasts about 2 minutes. The driven distance is a minimum of 300 meters, including a u-turn, an acceleration and a braking phase. The highest speed achieved during this test is 50km/h. The mechanical check is a visual and dynamic diagnosis without any disassembly. We cannot guarantee any mechanical wear part.