



# RENAULT CLIO

## Clio IV TCe 120 Initiale Paris EDC

VIN NO VF15R400E51967934  
Registration Number DT195EL



MOT Date



Last Service



Number of Owners



Last Service Mileage



Number of Keys



First Registration Date



Odometer Reading



Country First Registered



### Inspection Report Summary

Customer	BCA Auto Encheres	Report Number	P20251008154551
Inspection Date / Place	2025-10-08 / BCA BETHUNE	Cosmetic Grade	4

### Vehicle Summary

Vehicle Condition	Non-Runner	VAT Type	Exempt Rate
Fuel Type	Petrol	Gearbox Type	Automatic
Colour	Black	Engine Size (cc)	1199
Engine Size	1.2	No of Doors	5
Family	Passenger Car	Drive Train	Front
Seat Colour		No of Seats	5
Charging Cables		NEDC CO2 Rating (q/km)	120
Engine Rating CV		Metalic Colour	Yes
Accident Damage	No	Euro Emission	

### Vehicle History & Documents

Service Book Available	Present	Next Service Mileage	km
Previous Usage	Normal Use	Imported	No
Manufacturer Warrenty			



Equipment

Central locking	Radio	Alloys wheels	Front fog lamps
Satellite navigation	Electrically folding wing mirrors	Rear parking sensors	Cruise control
Power assisted steering			

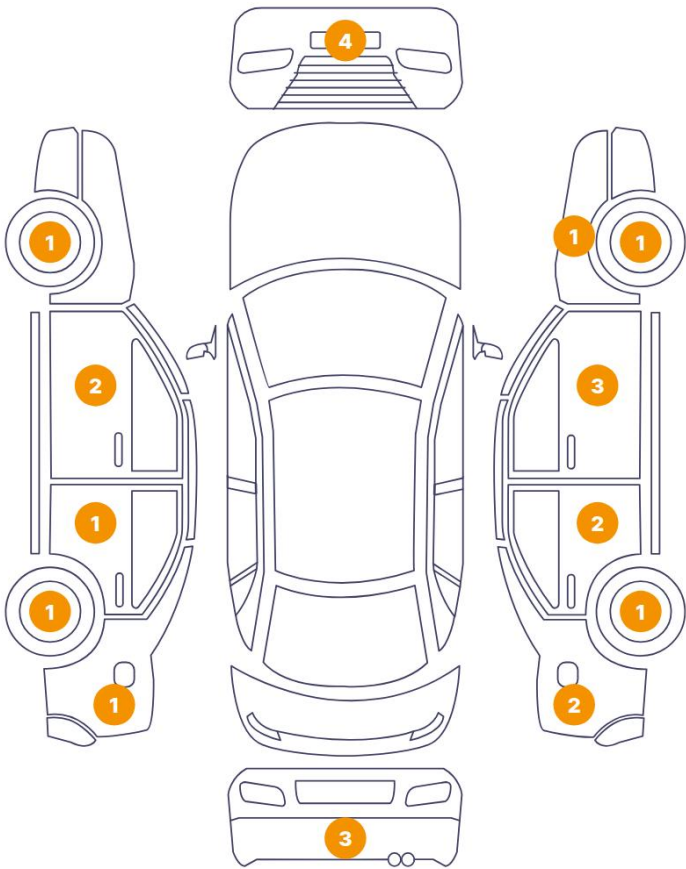
Equipment Details

Seat Heating	Front	Air Conditioning	Yes
Sunroof Type	Fixed Panoramic		

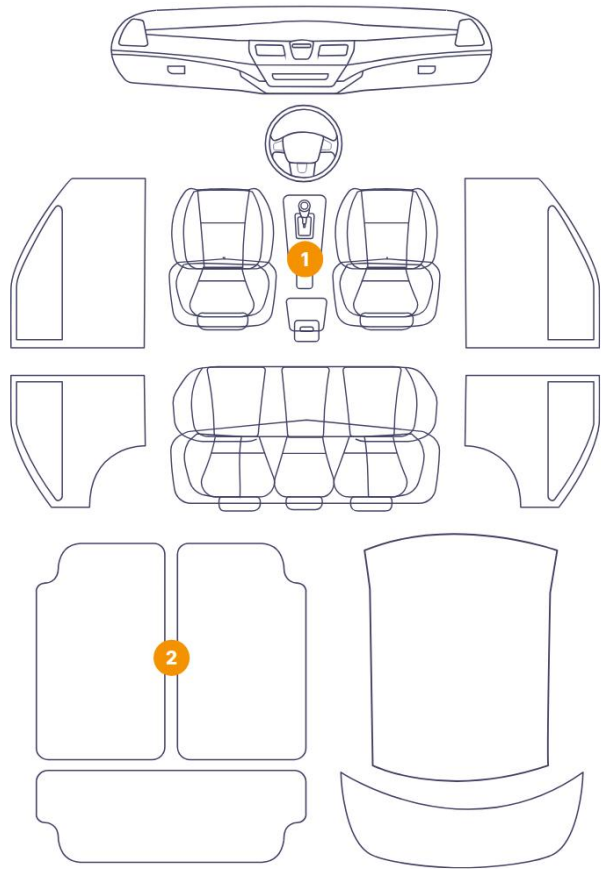


Cosmetic Damage

23 Dommages



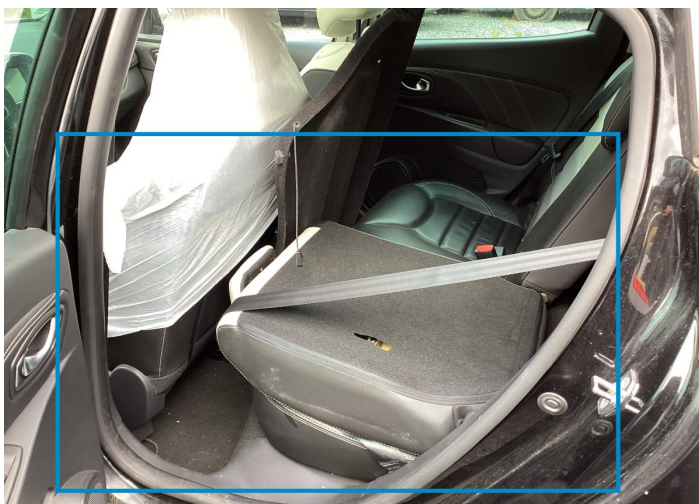
3 Dommages



Component		Damage	Comments
1	Floor Carpet	Interior / Dirty	
2	Corner Bumper / Front Right	Paint / Poor Previous Repair	
3	Door / Back Left	Paint / Scratch / Line	
4	Floor Carpet	Interior / Dirty	
5	Door / Front Right	Paint / Scratch / Line	
6	Door / Front Left	Paint / Scratch / Line	
7	Corner Bumper / Back Left	Paint / Scratch / Scuff	
8	Bumper / Back	Paint / Scratch / Scuff	
9	Side Panel / Back Left	Paint / Scratch / Line	
10	Corner Bumper / Back Right	Paint / Scratch / Scuff	
11	Corner Bumper / Front Left	Paint / Poor Previous Repair	
12	Bumper / Front	Paint / Poor Previous Repair	

13	Corner Bumper / Front Right	Paint / Scratch / Scuff
14	Side Window / Front Right	Paint / Poor Previous Repair
15	Rim / Back Left	Out of Bodywork / Scratch
16	Rim / Front Right	Out of Bodywork / Scratch
17	Rim / Back Right	Out of Bodywork / Scratch
18	Rim / Front Left	Out of Bodywork / Scratch
19	Mirror / Front Right	Paint / Scratch / Scuff
20	Fender / Front Right	Paint / Scratch / Line
21	Mirror / Front Left	Paint / Scratch / Line
22	Side Panel / Back Right	Paint / Scratch / Line
23	Side Panel / Back Right	Paint / Scratch / Scuff
24	Door / Back Right	Paint / Scratch / Line
25	Door / Back Right	Paint / Scratch / Line
26	Gear Knob	Interior / Missing





1. Floor Carpet  
Interior / Dirty -



2. Corner Bumper / Front Right  
Paint / Poor Previous Repair -



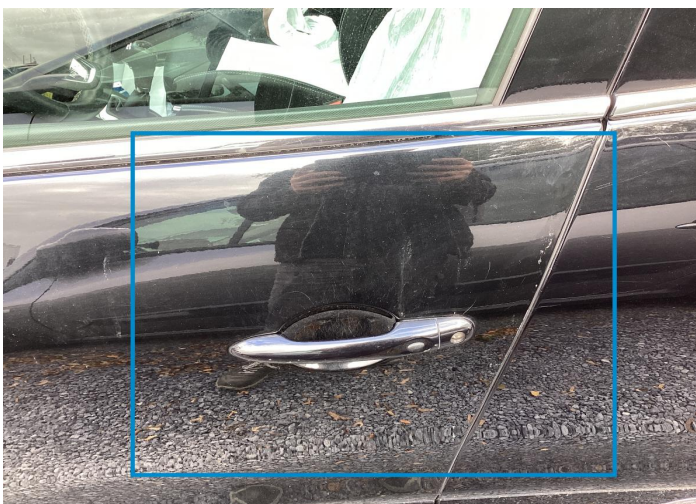
3. Door / Back Left  
Paint / Scratch / Line -



4. Floor Carpet  
Interior / Dirty -

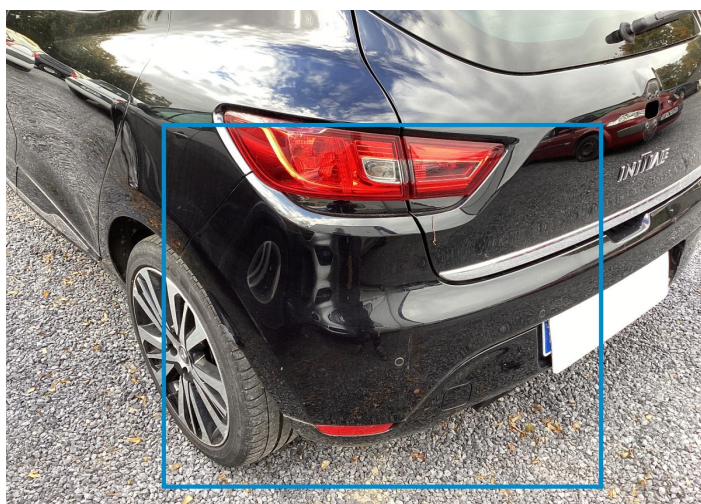


5. Door / Front Right  
Paint / Scratch / Line -



6. Door / Front Left  
Paint / Scratch / Line -





7. Corner Bumper / Back Left  
Paint / Scratch / Scuff -



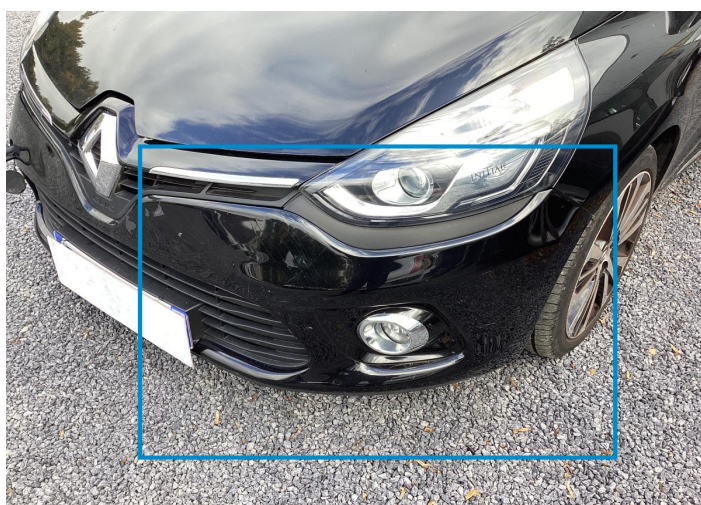
8. Bumper / Back  
Paint / Scratch / Scuff -



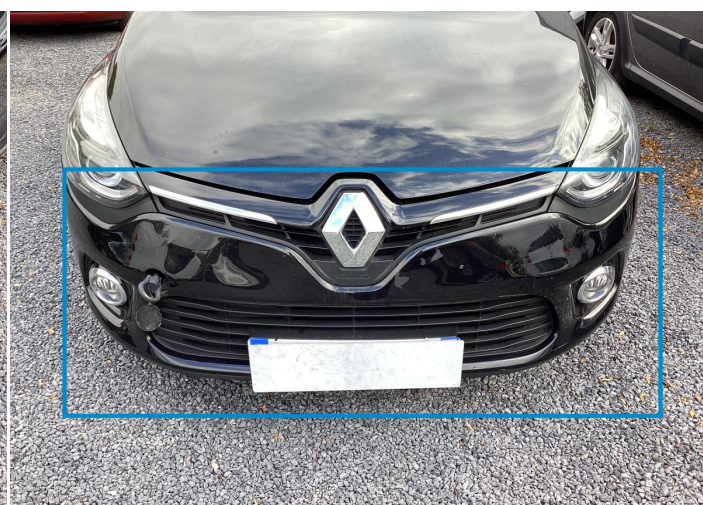
9. Side Panel / Back Left  
Paint / Scratch / Line -



10. Corner Bumper / Back Right  
Paint / Scratch / Scuff -



11. Corner Bumper / Front Left  
Paint / Poor Previous Repair -



12. Bumper / Front  
Paint / Poor Previous Repair -





13. Corner Bumper / Front Right  
Paint / Scratch / Scuff -



14. Side Window / Front Right  
Paint / Poor Previous Repair -



15. Rim / Back Left  
Out of Bodywork / Scratch -



16. Rim / Front Right  
Out of Bodywork / Scratch -



17. Rim / Back Right  
Out of Bodywork / Scratch -

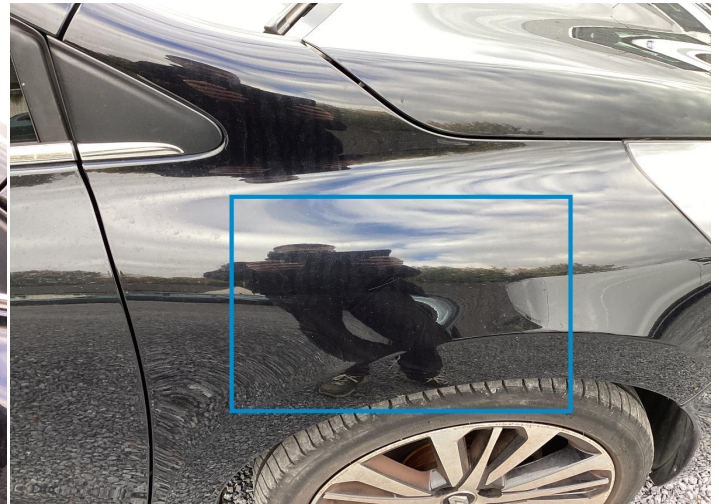


18. Rim / Front Left  
Out of Bodywork / Scratch -





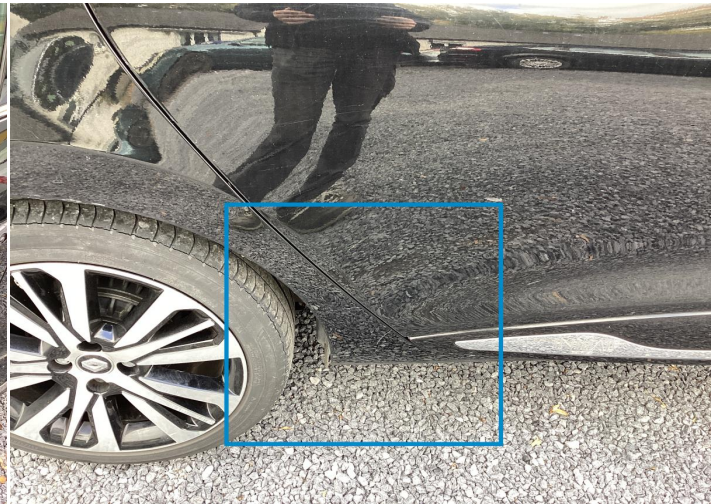
19. Mirror / Front Right  
Paint / Scratch / Scuff -



20. Fender / Front Right  
Paint / Scratch / Line -



21. Mirror / Front Left  
Paint / Scratch / Line -



22. Side Panel / Back Right  
Paint / Scratch / Line -



23. Side Panel / Back Right  
Paint / Scratch / Scuff -



24. Door / Back Right  
Paint / Scratch / Line -





25. Door / Back Right  
Paint / Scratch / Line -



26. Gear Knob  
Interior / Missing -



# Mechanical Condition

Tyres

Presence Anti-Theft Lock Nut 

 *No troubles detected, good condition or correct tests, according to vehicle age and mileage*

 *Damages or malfunction detected that requires repairs by the buyer*

 *Not applicable*

 *Not tested*

## Disclaimer Section

*The test drive is done on a flat surface and lasts about 2 minutes. The driven distance is a minimum of 300 meters, including a u-turn, an acceleration and a braking phase. The highest speed achieved during this test is 50km/h. The mechanical check is a visual and dynamic diagnosis without any disassembly. We cannot guarantee any mechanical wear part.*